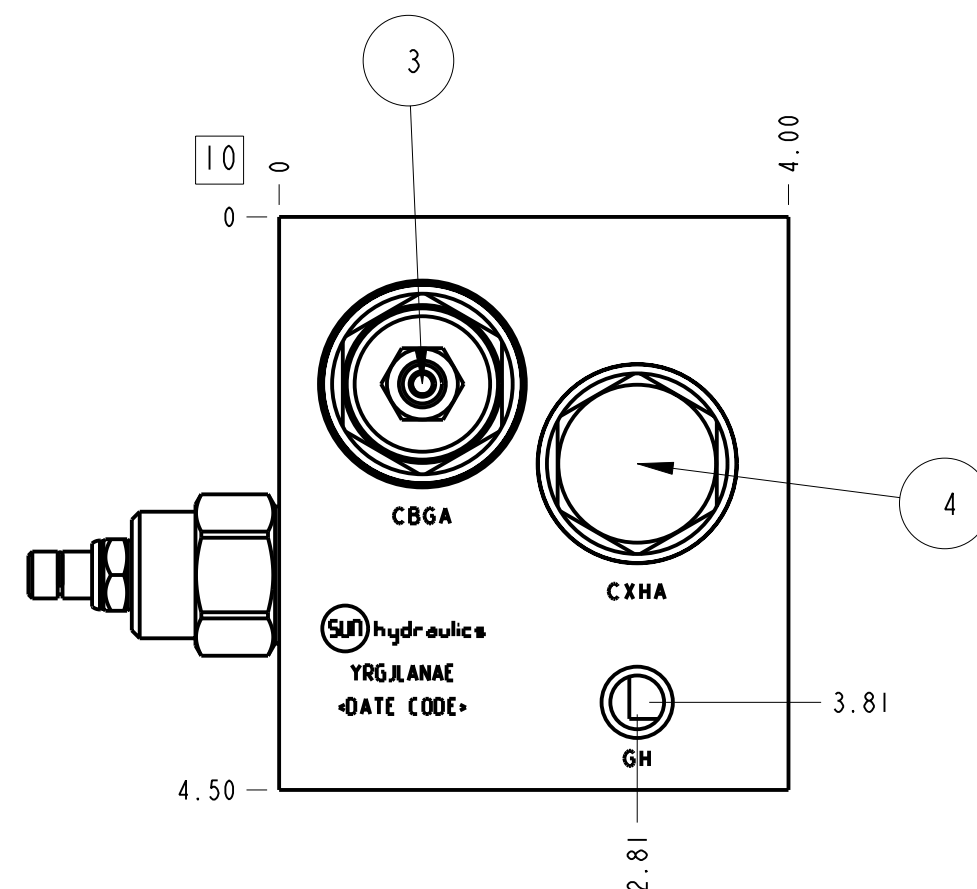
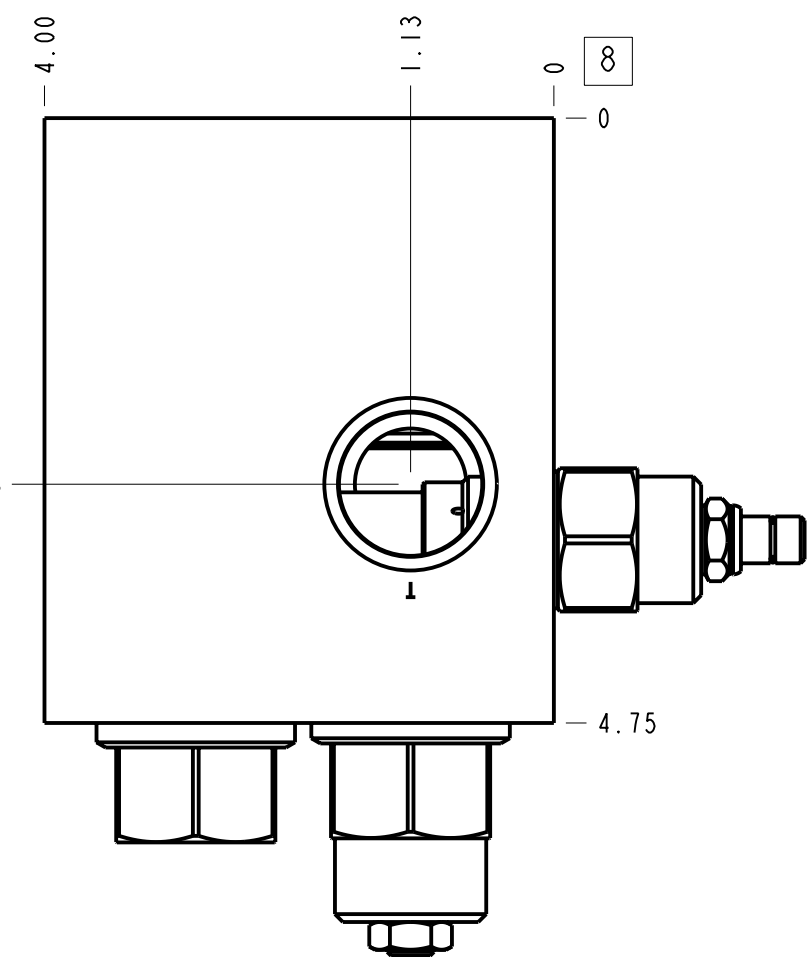
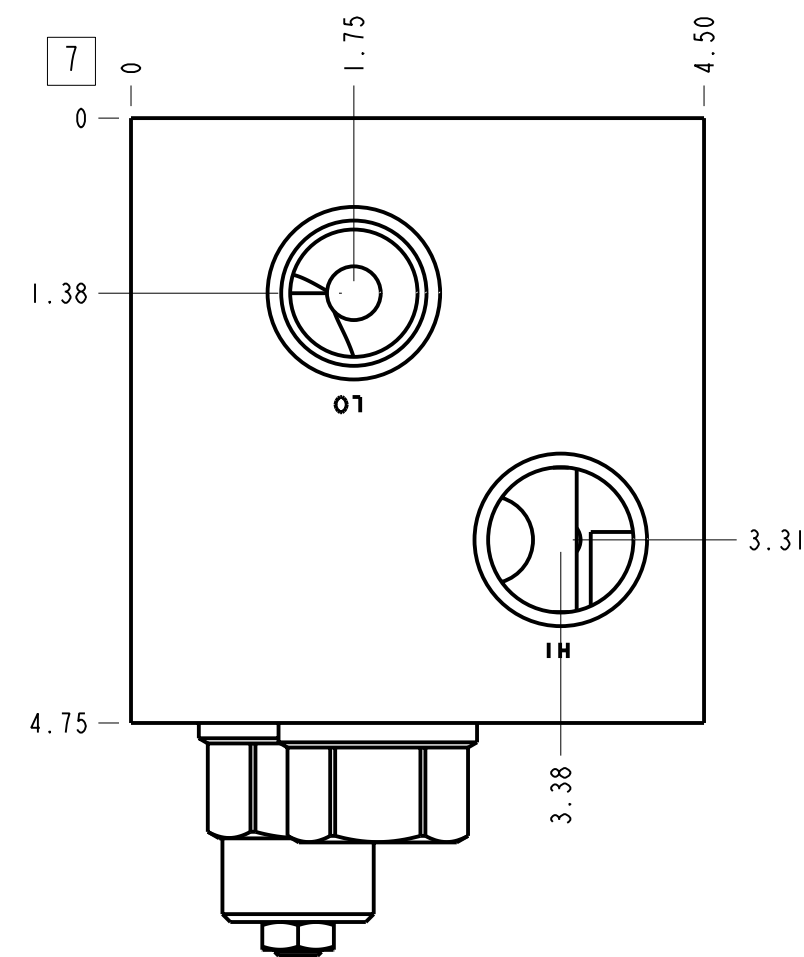
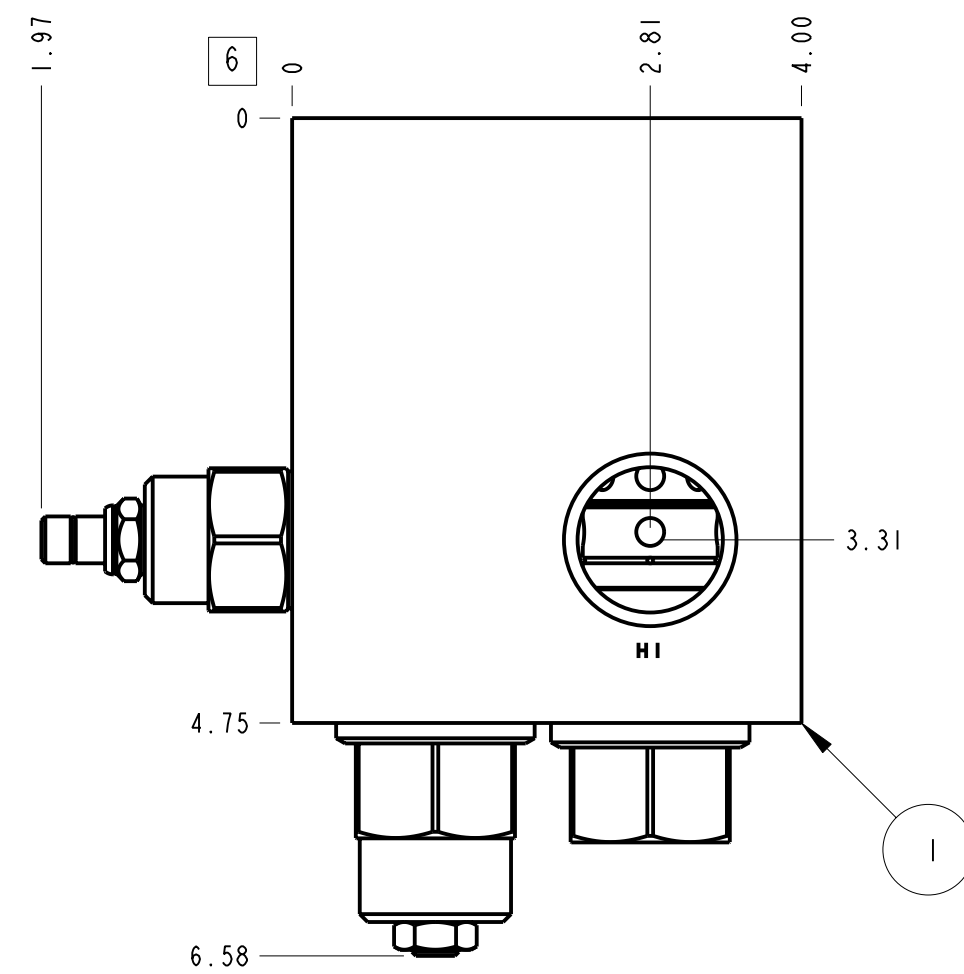
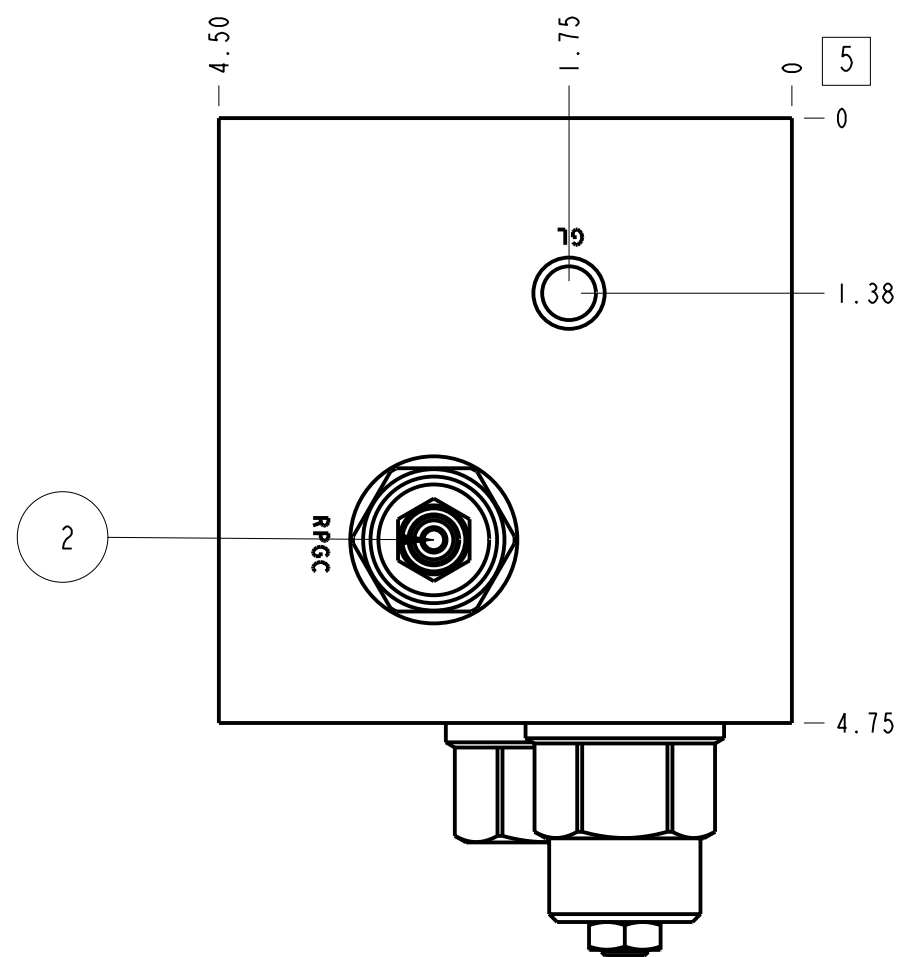


Technical Data	U.S. Units	Metric Units
Body Type	Line mount	
Weight	9.333 lb.	4,233 kg.
Capacity	60 gpm	240 L/min.
Maximum Operating Pressure - 6061-T651 Aluminum	3000 psi	210 bar
Maximum Operating Pressure - 65-45-12 Ductile Iron	5000 psi	350 bar
Mounting Hole Quantity	2	



Notes

1. Important: Carefully consider the maximum system pressure. The pressure rating of the manifold is dependent on the manifold material, with the port type/size a secondary consideration. Manifolds constructed of aluminum are not rated for pressures higher than 3000 psi (210 bar), regardless of the port type/size specified.
2. For detailed information regarding the cartridges contained in this assembly, click on the models codes shown in the Included Components tab.
3. This drawing is for reference only. It is generated by an automated process and does not fall under Sun's document control process.

Port Headings		
Product	Port	Size
YRGJLANAE	HI, LO & T	1" NPTF
YRGJLANAE	GH & GL	1" NPTF
YRGJLANAE	Gage Ports	1/4" NPTF
YRGJLANAE	Mounting Holes	3/75 - 16UNC x .75 DP

4	CXHAXCN		CHECK VALVE	1	
3	CBGA-LIN		COUNTERBALANCE VALVE	1	
2	RPGC-LAN		RELIEF VALVE	1	
1	150-948-001		6061-T6 ALUMINUM	BODY	1
ITEM	PART NO.	SETTING	MATERIAL	PART NAME	QTY

MODEL	YRGJLANAE	ALL DIMENSIONS IN INCH VIEWS ARE THIRD ANGLE			FIRST ANGLE	THIRD ANGLE
DESCRIPTION	Line mount	DATE	SCALE	DWG SIZE	SHEET	
		Jul-10-23	0.663	C	1	