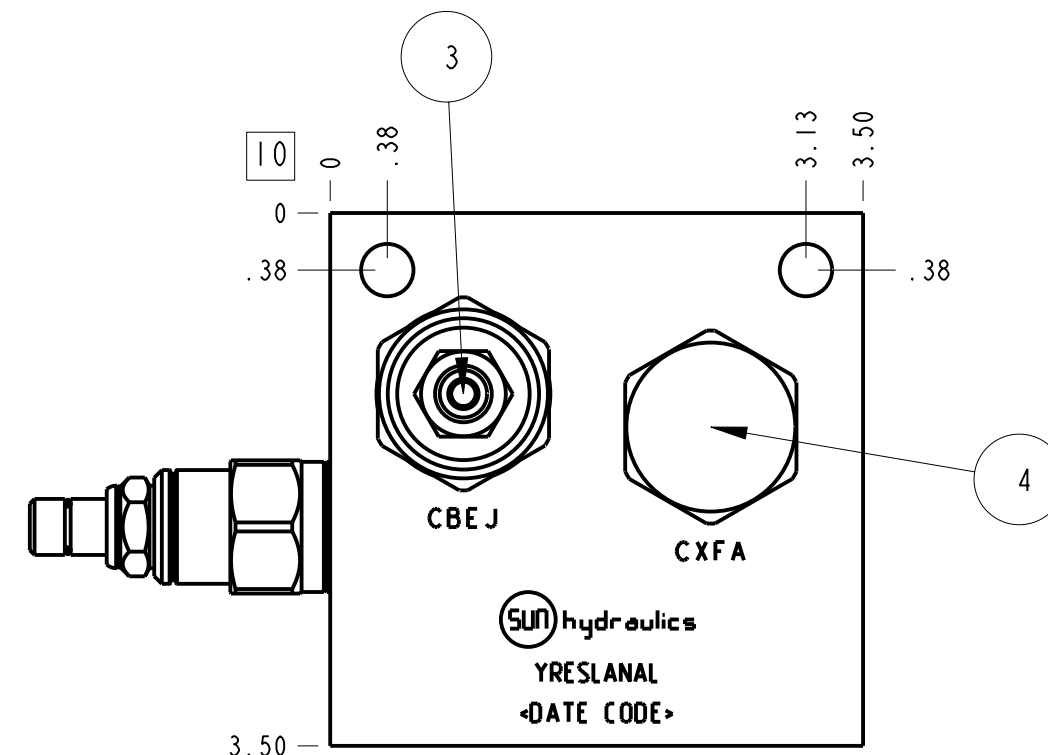
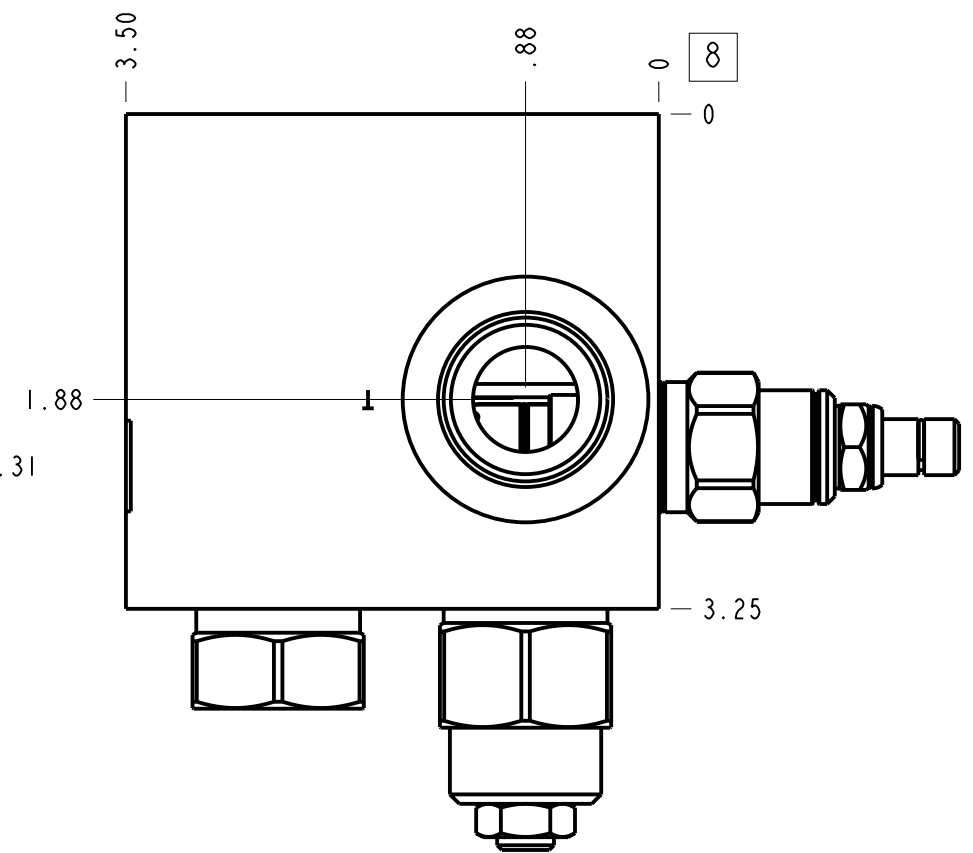
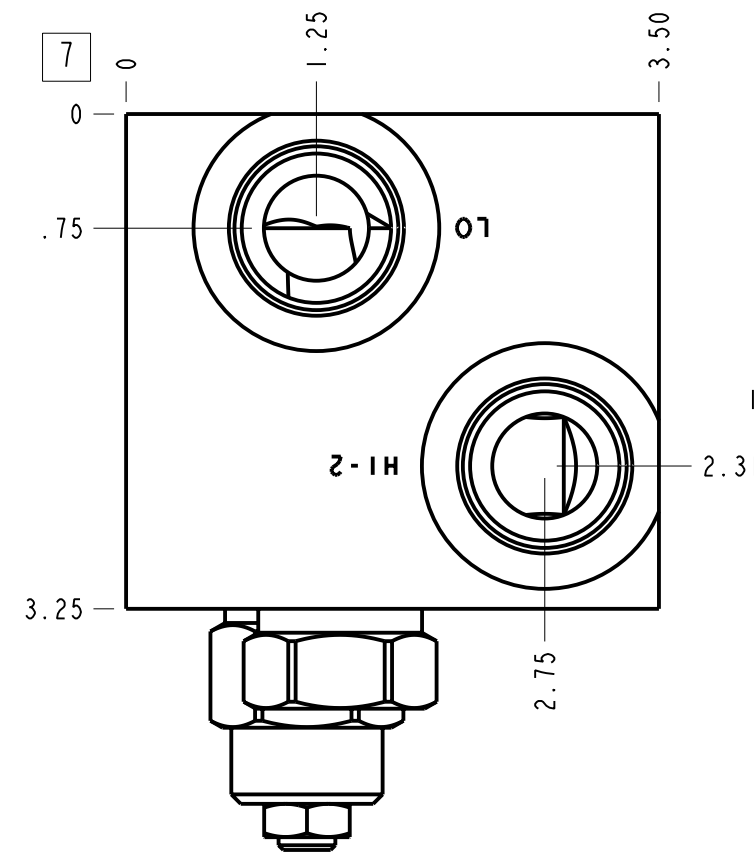
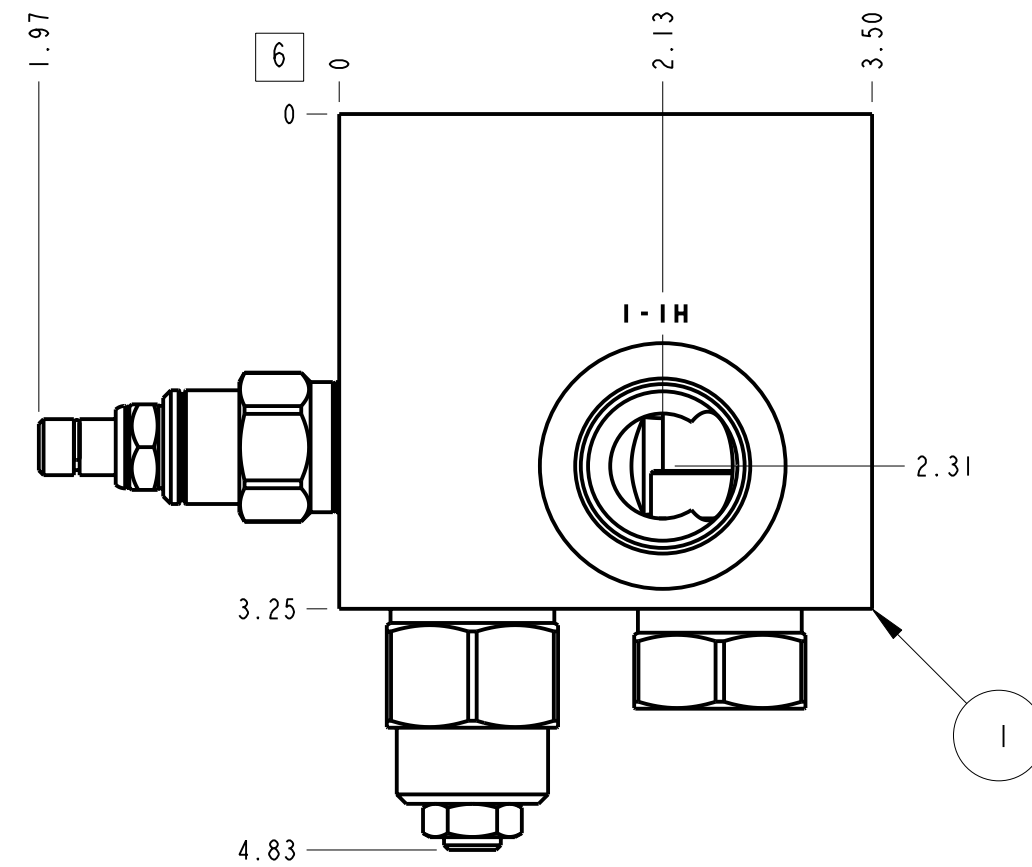
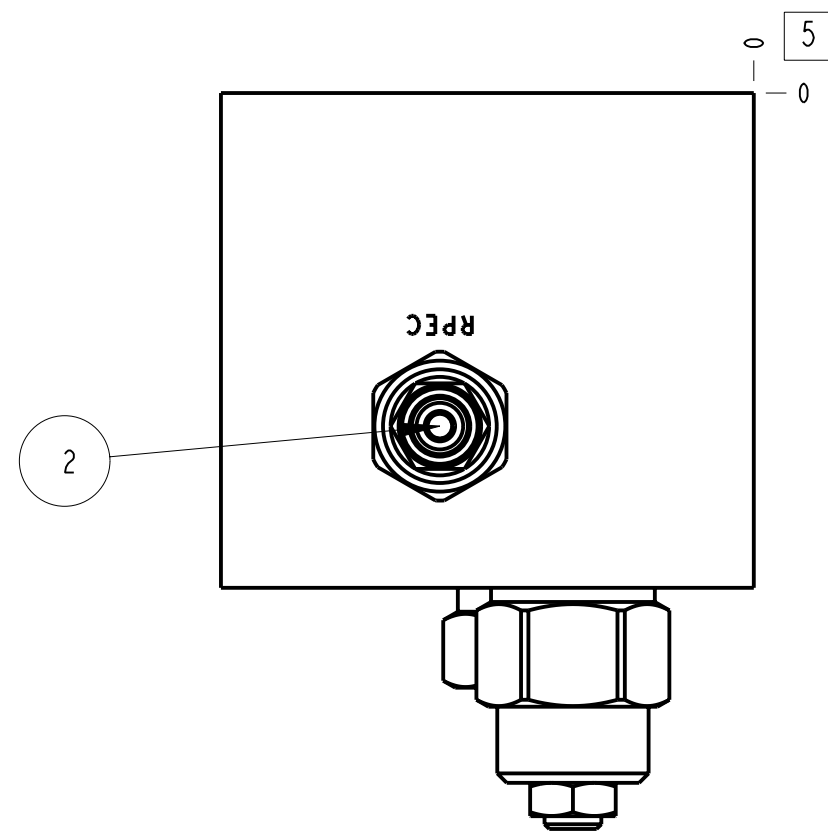
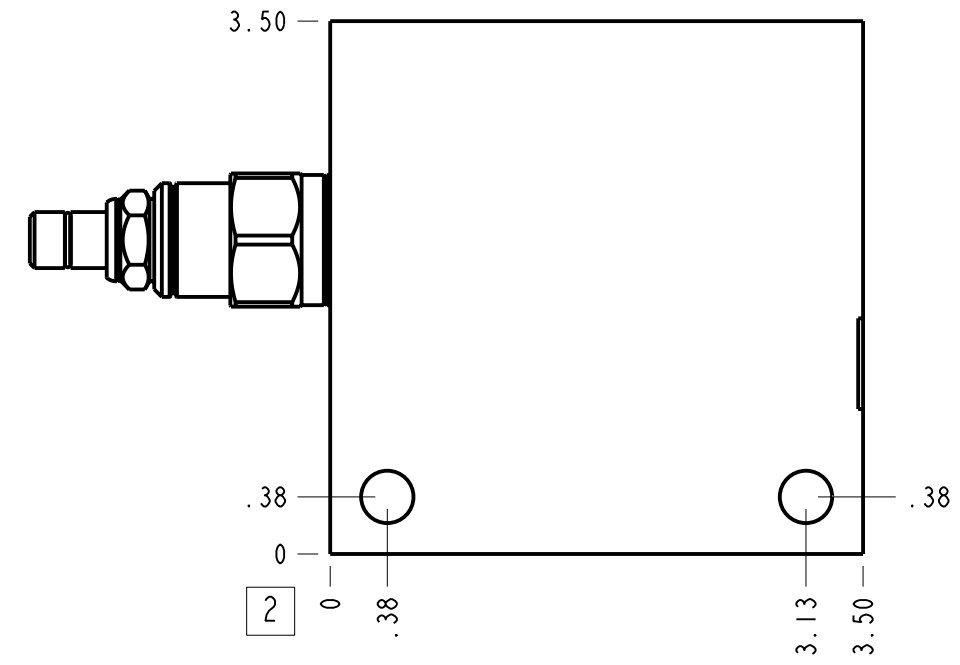


Technical Data	U.S. Units	Metric Units
Body Type	Line mount	
Weight	4.357 lb.	1,976 kg.
Capacity	30 gpm	120 L/min.
Mounting Hole Diameter	.34 in.	8.6 mm
Mounting Hole Depth	Through	
Mounting Hole Quantity	2	



Notes

1. Important: Carefully consider the maximum system pressure. The pressure rating of the manifold is dependent on the manifold material, with the port type/size a secondary consideration. Manifolds constructed of aluminum are not rated for pressures higher than 3000 psi (210 bar), regardless of the port type/size specified.
2. For detailed information regarding the cartridges contained in this assembly, click on the models codes shown in the Included Components tab.
3. This drawing is for reference only. It is generated by an automated process and does not fall under Sun's document control process.

Port Headings		
Product	Port	Size
YRESLANAL	All Ports	SAE 12

4	CXFA-XCN		CHECK VALVE	1	
3	CBEJ-LIN		COUNTERBALANCE VALVE	1	
2	RPECLAN		RELIEF VALVE	1	
1	150-900-004	6061-T6 ALUMINUM	BODY	1	
ITEM	PART NO.	SETTING	MATERIAL	PART NAME	QTY

MODEL		YRESLANAL		ALL DIMENSIONS IN INCH VIEWS ARE THIRD ANGLE		FIRST ANGLE		THIRD ANGLE	
DESCRIPTION		Line mount		DATE	SCALE	DWG SIZE	SHEET		
				Feb-20-24	0.793	C	1		