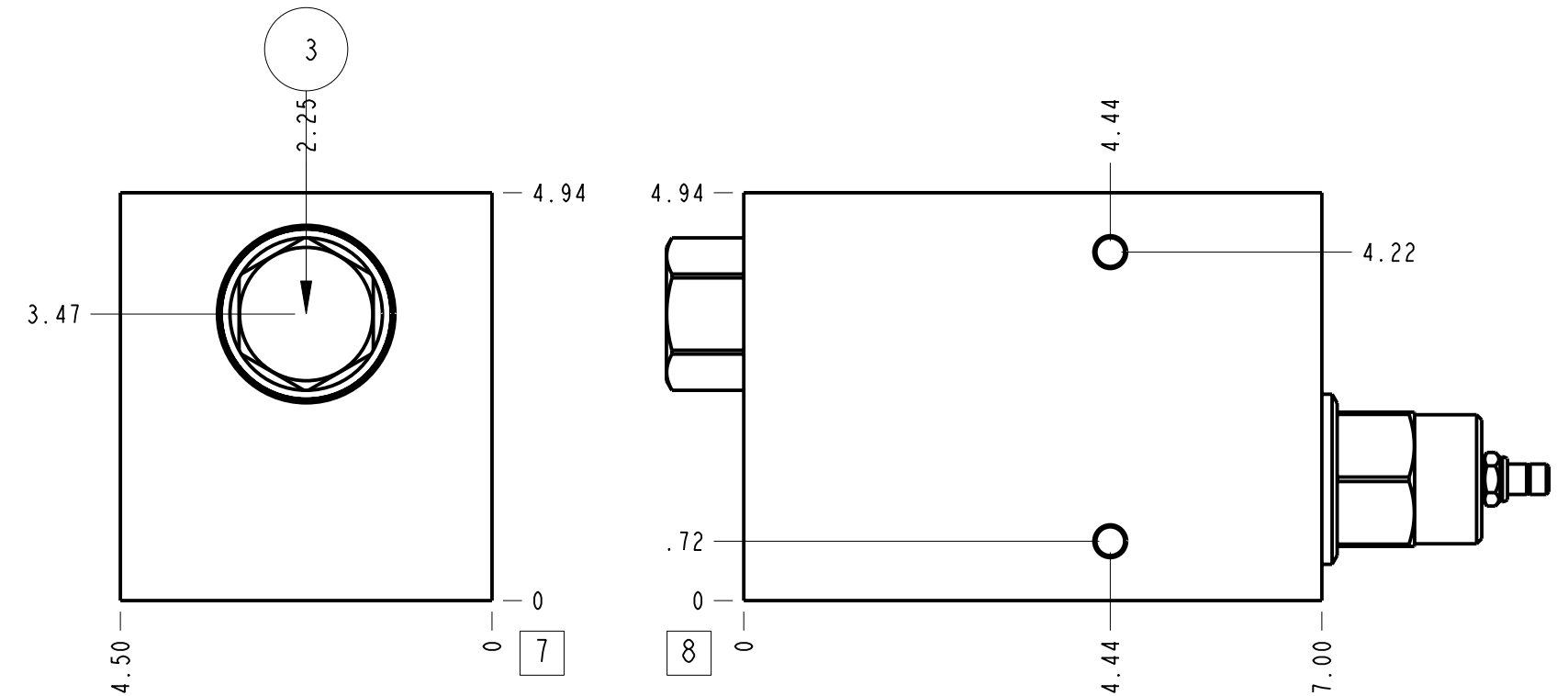
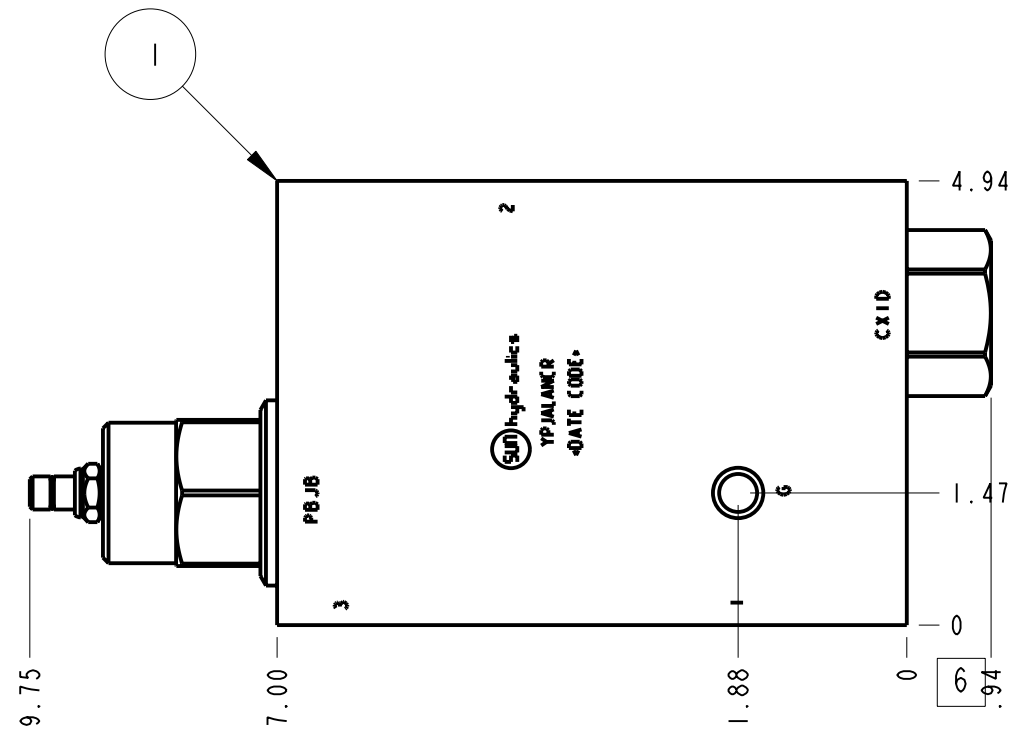
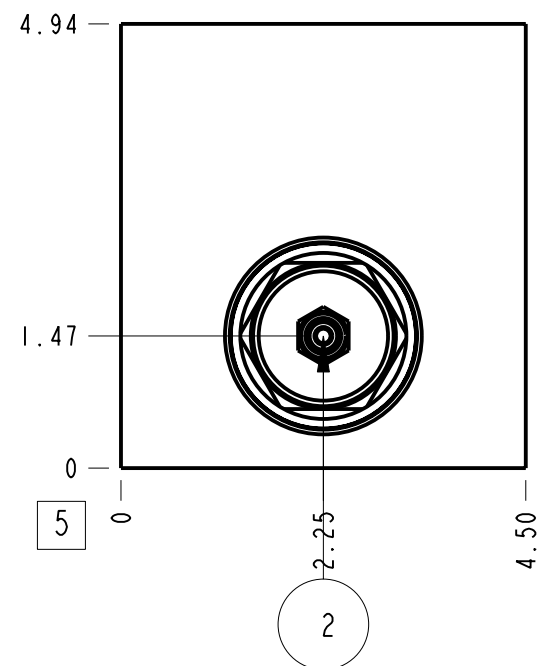
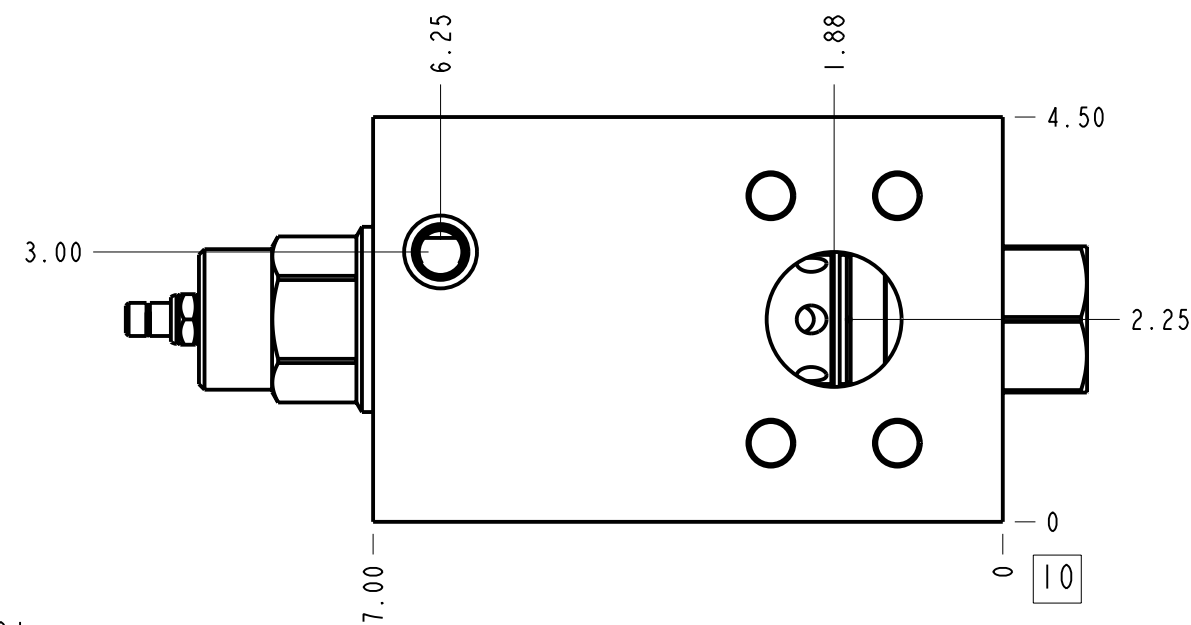


Technical Data	U.S. Units	Metric Units
Body Type	Line mount	
Weight	17.029 lb.	7,724 kg.
Capacity	80 gpm	320 L/min.
Model Family	Pressure Reducing Assemblies	



Notes

- Important: Carefully consider the maximum system pressure. The pressure rating of the manifold is dependent on the manifold material, with the port type/size a secondary consideration. Manifolds constructed of aluminum are not rated for pressures higher than 3000 psi (210 bar), regardless of the port type/size specified.
- For detailed information regarding the cartridges contained in this assembly, click on the models codes shown in the Included Components tab.
- Flange mounting hole data: Inch: 1/2-13 UNC x 1.06 (26.9 mm) DP, Metric: M12
- This drawing is for reference only. It is generated by an automated process and does not fall under Sun's document control process.



Port Headings		
Product	Port	Size
YPJALANCR	Ports 1 & 2	1 1/2 in. Code 61
YPJALANCR	Port 3	SAE 6
YPJALANCR	Gage Port	1/4" NPTF
YPJALANCR	Mtg Holes	.375 - 16UNC x .62 DP

3	CXID-XCN		CHECK VALVE	1	
2	PBJB-LAN		PRESSURE REDUCING VALVE	1	
1	151-078-001	6061-T6 ALUMINUM	BODY	1	
ITEM	PART NO.	SETTING	MATERIAL	PART NAME	QTY

MODEL	YPJALANCR	ALL DIMENSIONS IN INCH VIEWS ARE THIRD ANGLE			FIRST ANGLE	THIRD ANGLE
DESCRIPTION	Line mount	DATE	SCALE	DWG SIZE	SHEET	
		Nov-04-24	0.469	C	1	