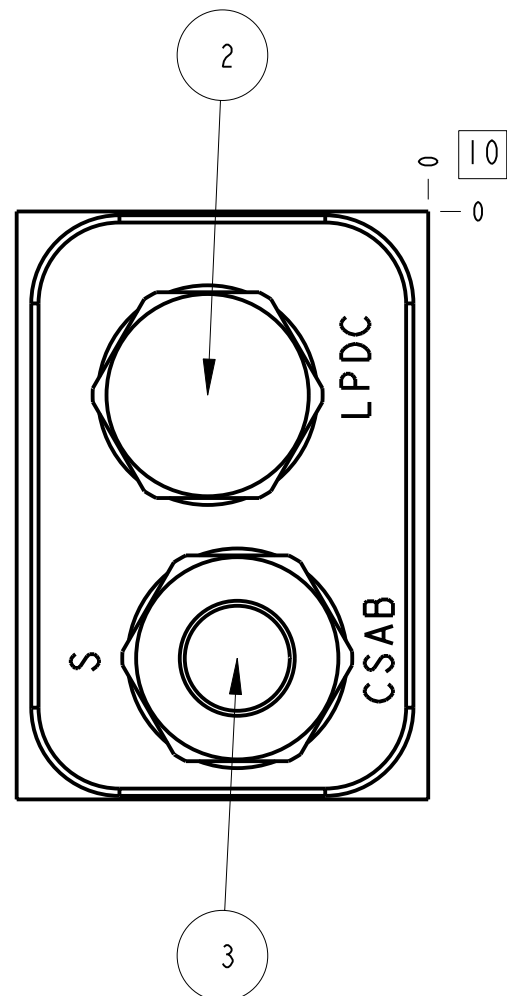
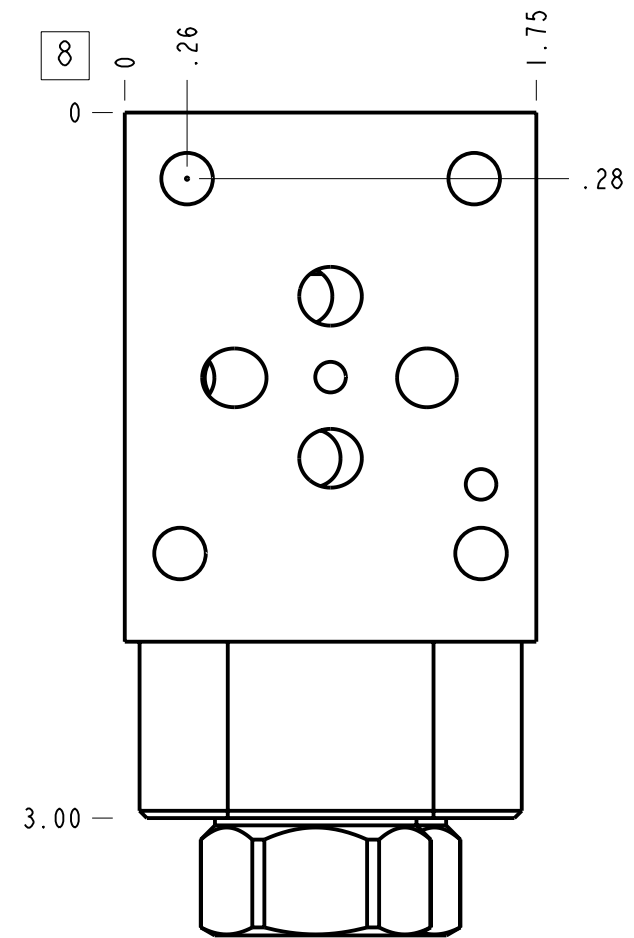
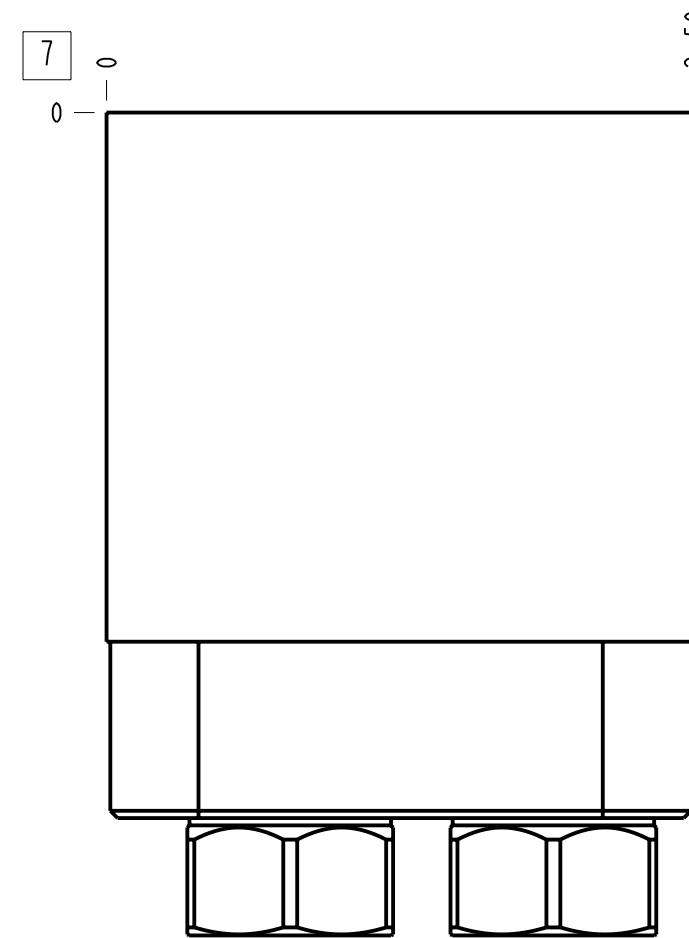
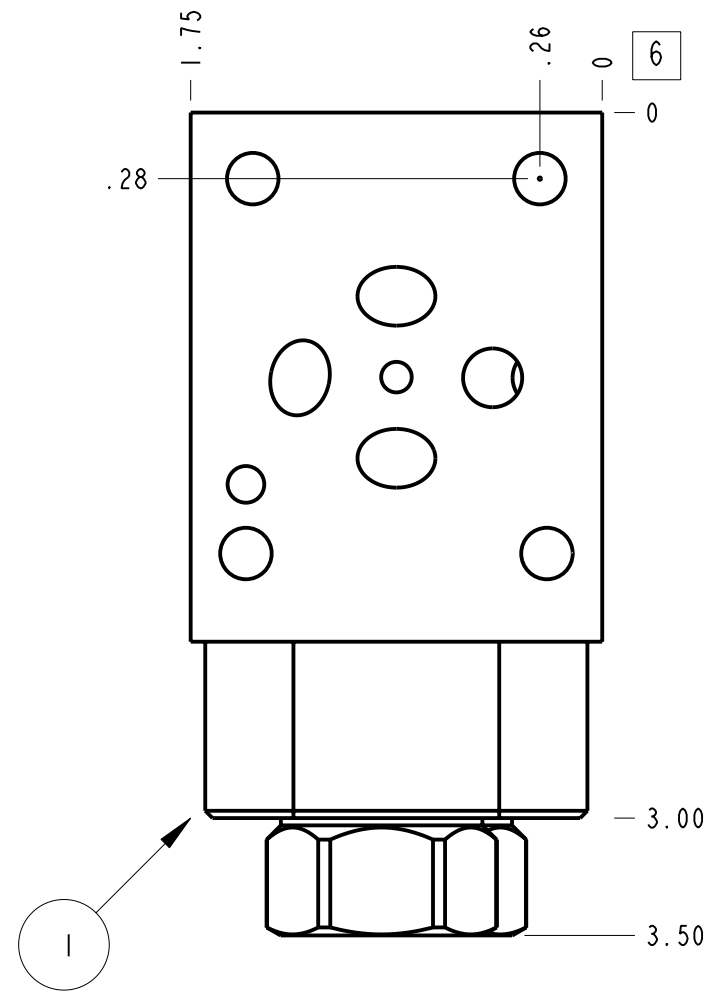
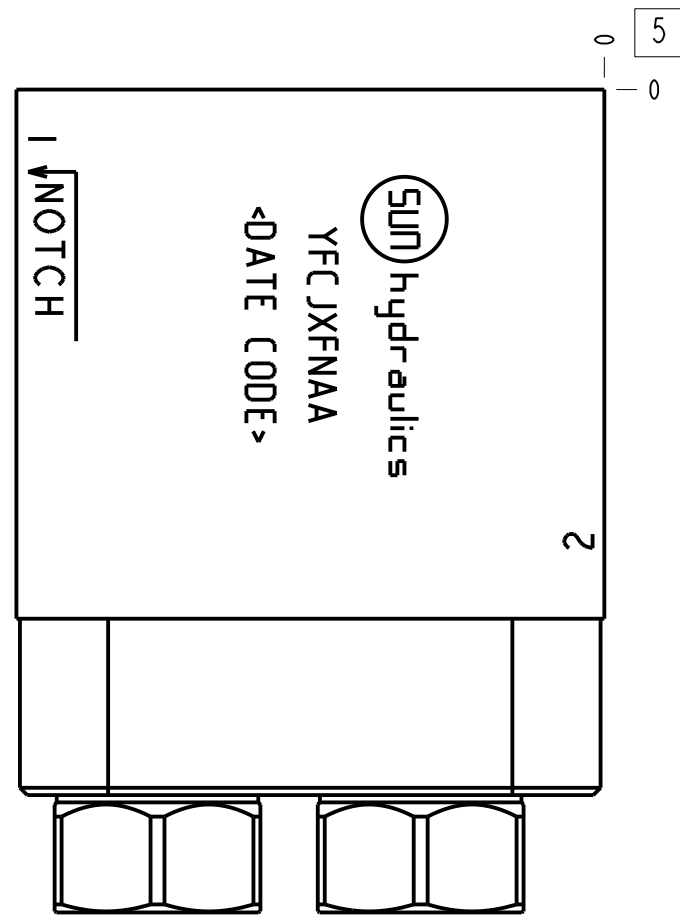
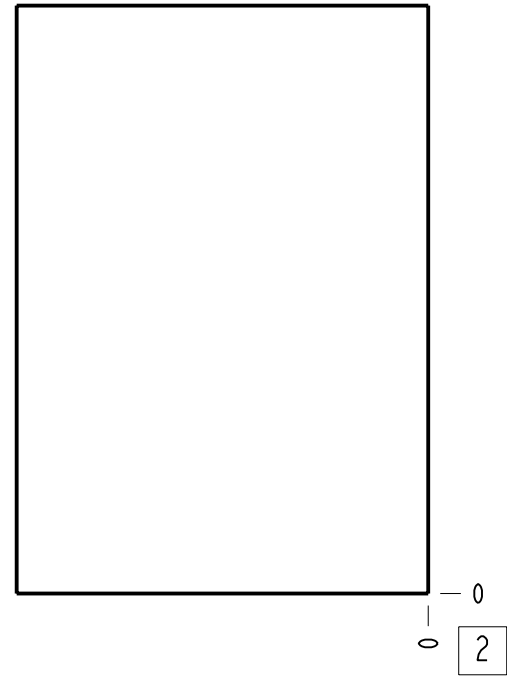
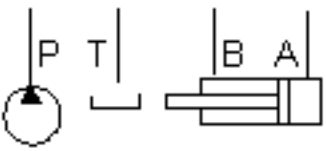


Restrictive pressure compensator with load sense port



Technical Data	U.S. Units	Metric Units
Body Features	Meter in P	
Body Type	Sandwich	
Interface	ISO 03	
Stack Height	2.55 in.	
Weight	1.493 lb.	0.677 kg.
Capacity	10 gpm	40 L/min.
Maximum Operating Pressure - 6061-T651 Aluminum	3000 psi	210 bar
Maximum Operating Pressure - 65-45-12 Ductile Iron	5000 psi	350 bar
Seal Plate Included (see notes)	Yes	
Operating Characteristic	Restrictive	

Notes

- Important: Carefully consider the maximum system pressure. The pressure rating of the manifold is dependent on the manifold material, with the port type/size a secondary consideration. Manifolds constructed of aluminum are not rated for pressures higher than 3000 psi (210 bar), regardless of the port type/size specified.
- Customer to install locating pin (included) for functional orientation desired.
- Stack height value in technical data table includes seal retainer plate.
- For detailed information regarding the cartridges contained in this assembly, click on the models codes shown in the Included Components tab.
- Port S is the external connection at the top of the shuttle cartridge.
- This drawing is for reference only. It is generated by an automated process and does not fall under Sun's document control process.
- Items without balloons are shipped loose.

6	811-001-006				1
5	700-002				1
4	500-001-012				4
3	CSABAXN			SHUTTLE VALVE	1
2	LPDC-XFN			MODULATING ELEMENT VALVE	1
1	151-099		6061-T6 ALUMINUM	BODY	1
I T E M	PART NO.	SETTING	MATERIAL	PART NAME	Q T Y

MODEL	YFCJXFNAA	ALL DIMENSIONS IN INCH VIEWS ARE THIRD ANGLE		FIRST ANGLE	THIRD ANGLE
DESCRIPTION	Sandwich ISO 03 Meter in P	DATE	SCALE	DWG SIZE	SHEET
		Aug-14-24	1.225	C	1