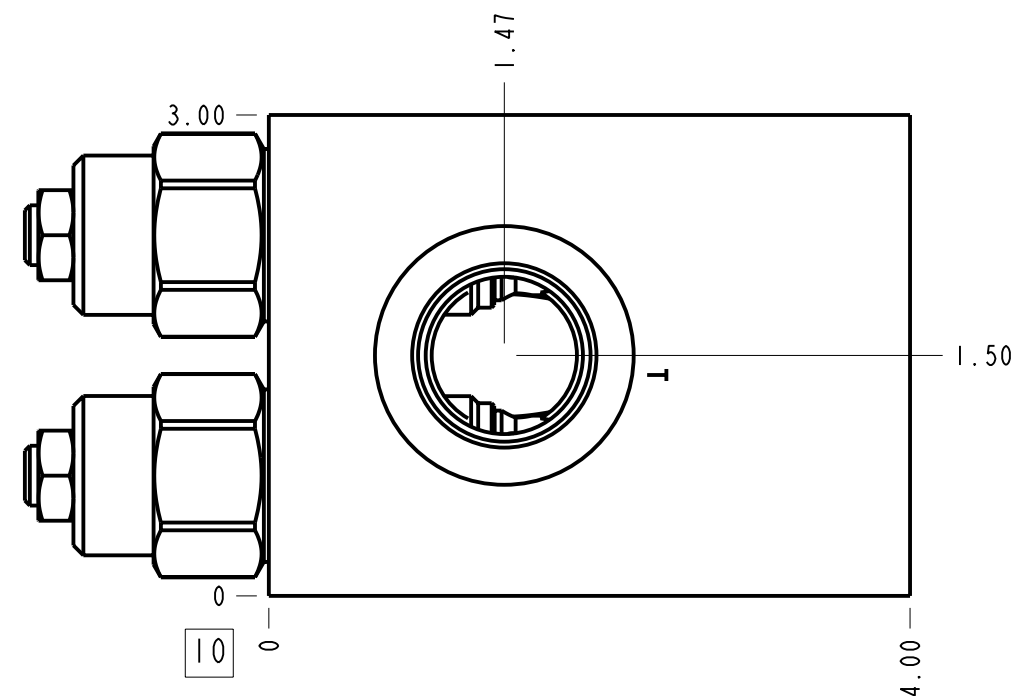
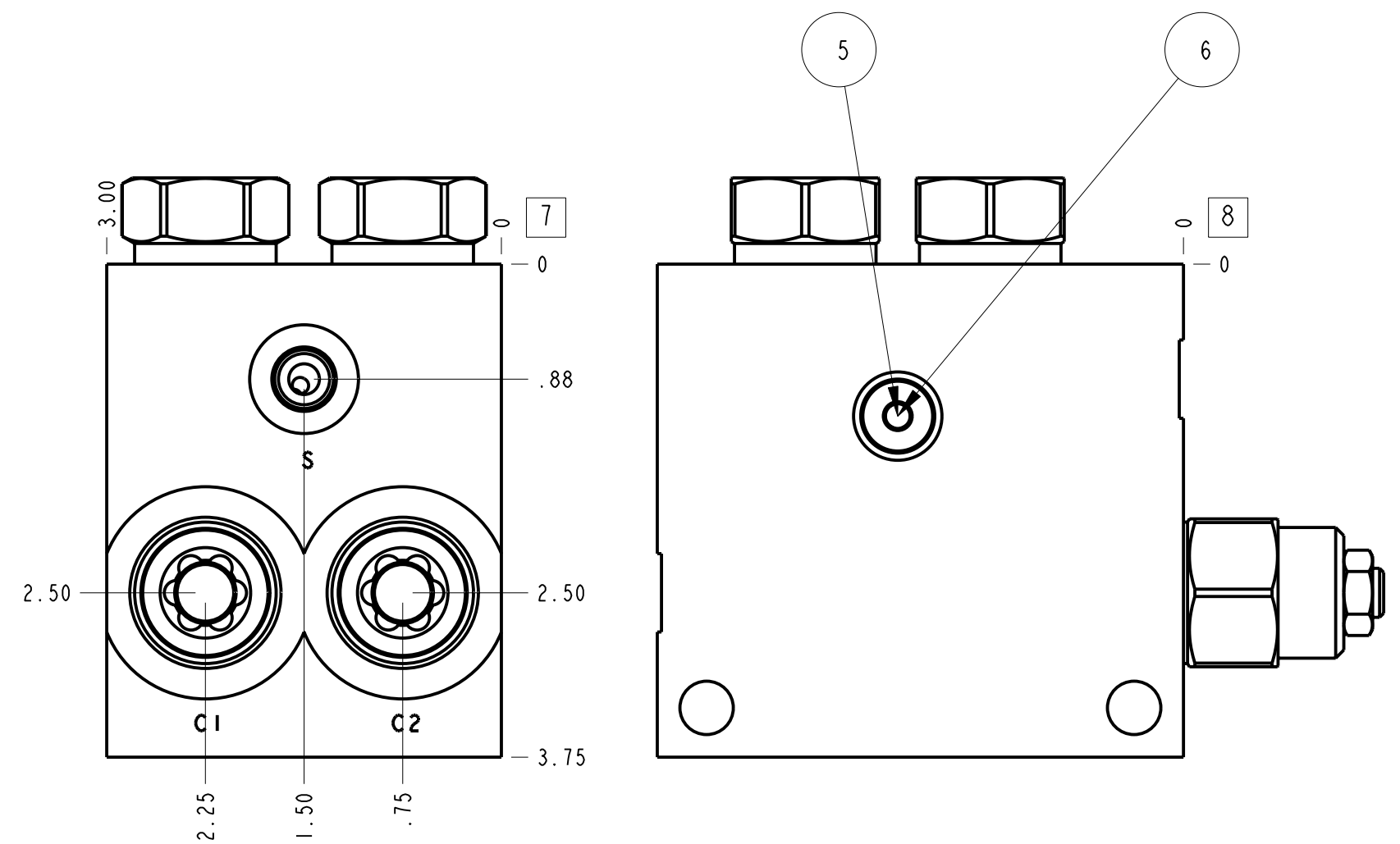
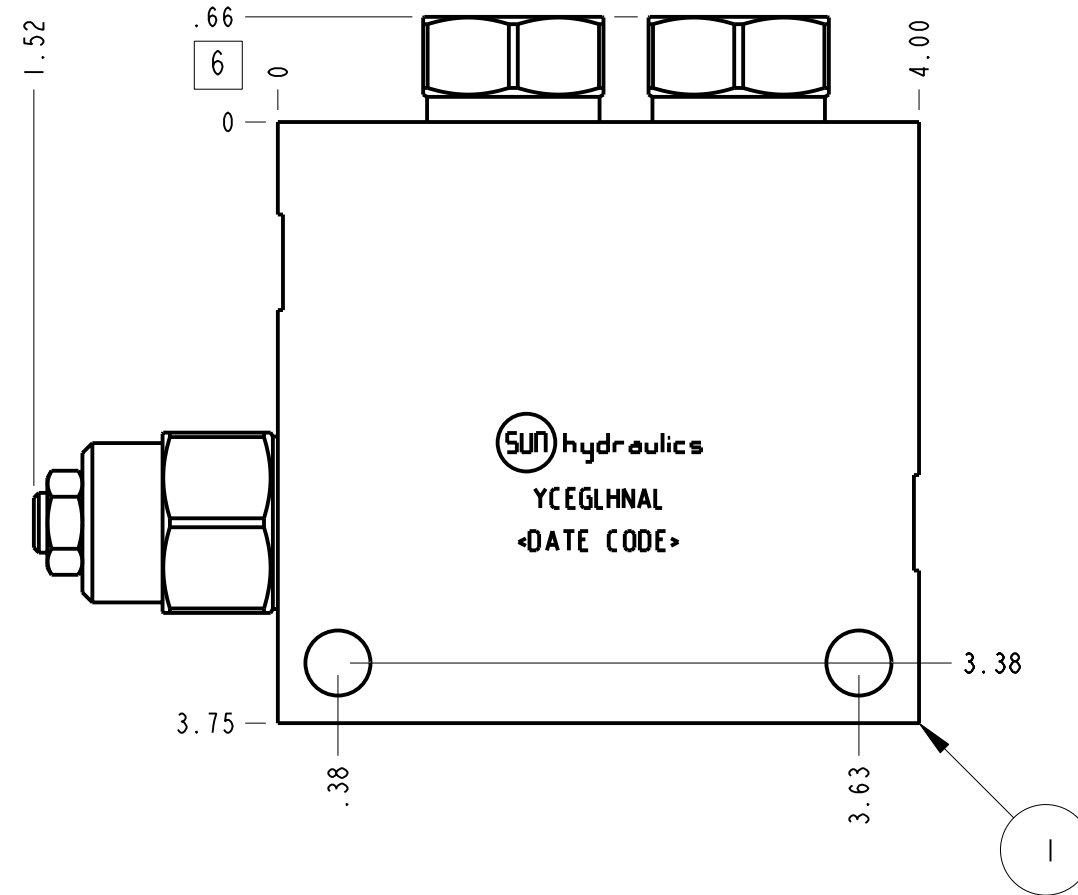
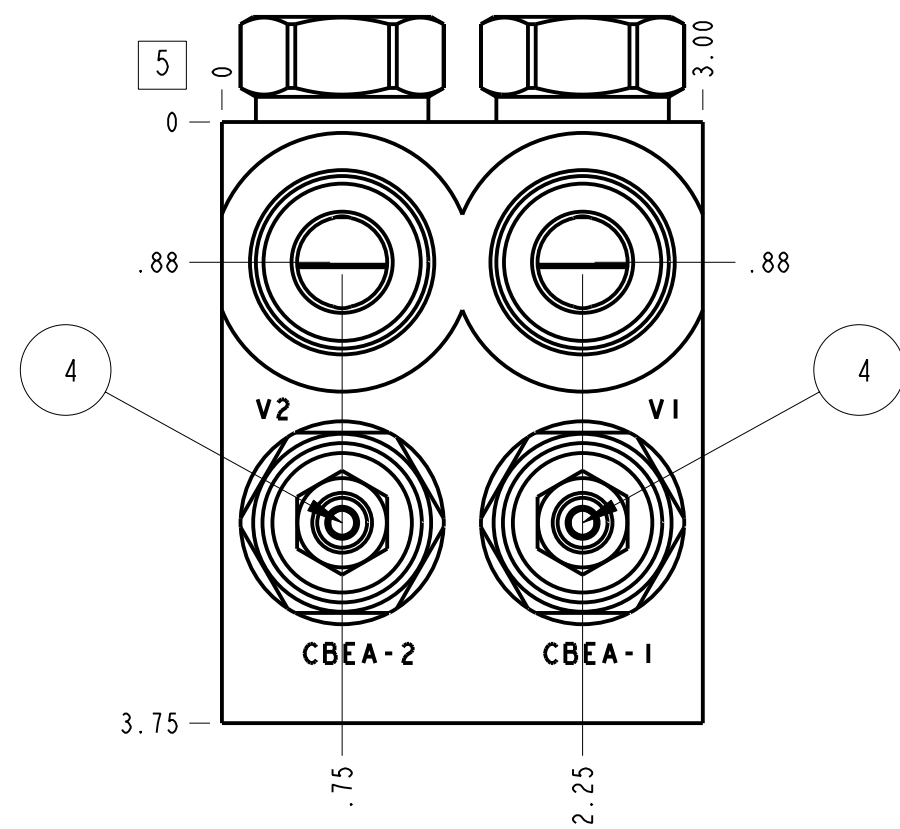


Technical Data	U.S. Units	Metric Units
Body Type	Line mount	
Weight	5.760 lb.	2,613 kg.
Capacity	30 gpm	120 L/min.
Maximum Operating Pressure - 6061-T651 Aluminum	3000 psi	210 bar
Maximum Operating Pressure - 65-45-12 Ductile Iron	5000 psi	350 bar
Mounting Hole Diameter	.40 in.	10,2 mm
Mounting Hole Depth	Through	
Mounting Hole Quantity	2	
PDF Drawing	PDF Drawing	



Notes

1. Important: Carefully consider the maximum system pressure. The pressure rating of the manifold is dependent on the manifold material, with the port type/size a secondary consideration. Manifolds constructed of aluminum are not rated for pressures higher than 3000 psi (210 bar), regardless of the port type/size specified.
2. For detailed information regarding the cartridges contained in this assembly, click on the models codes shown in the Included Components tab.
3. This drawing is for reference only. It is generated by an automated process and does not fall under Sun's document control process.

Port Headings		
Product	Port	Size
YCEGLHNAL	Ports C1, C2, V1, V2	SAE 12
YCEGLHNAL	Port T	SAE 12
YCEGLHNAL	Port S	SAE 4

6	A330-006-004			SAE-4 PLUG	1
5	CSZNXXN			SHUTTLE VALVE	1
4	CBEALHN			COUNTERBALANCE VALVE	2
3	CXEDXAN			CHECK VALVE	2
2	CXFA-XAN			CHECK VALVE	2
1	150-233-004		6061-T6 ALUMINUM	BODY	1
ITEM	PART NO.	SETTING	MATERIAL	PART NAME	QTY

MODEL	YCEGLHNAL	ALL DIMENSIONS IN INCH VIEWS ARE THIRD ANGLE			FIRST ANGLE	THIRD ANGLE
DESCRIPTION	Line mount	DATE	SCALE	DWG SIZE	SHEET	
		Apr-24-23	0.835	C	1	