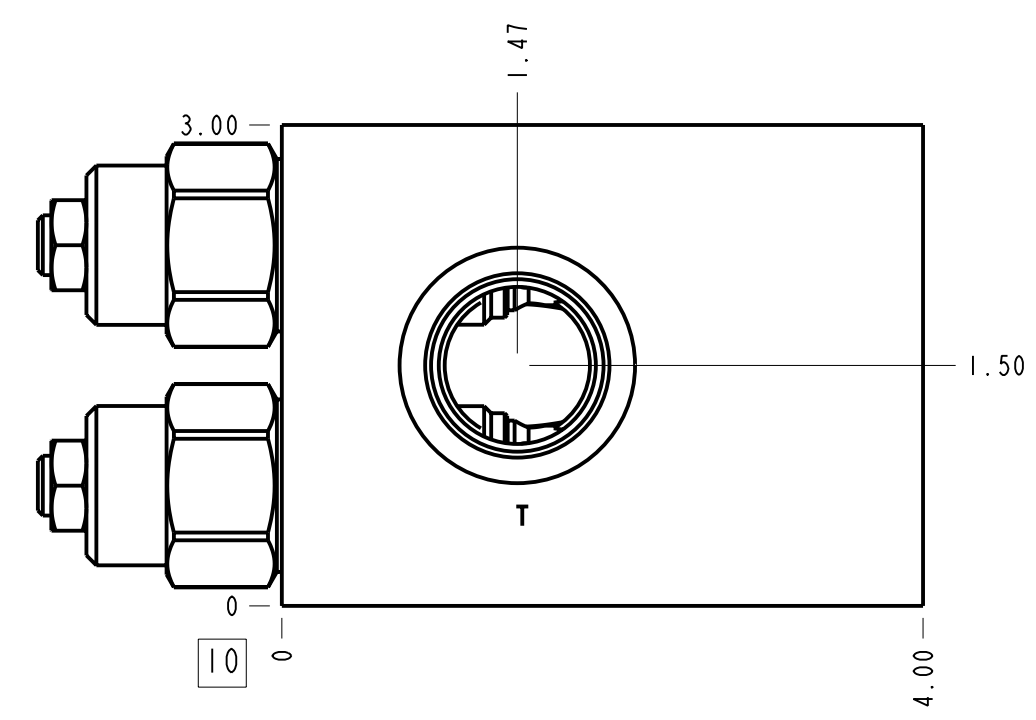
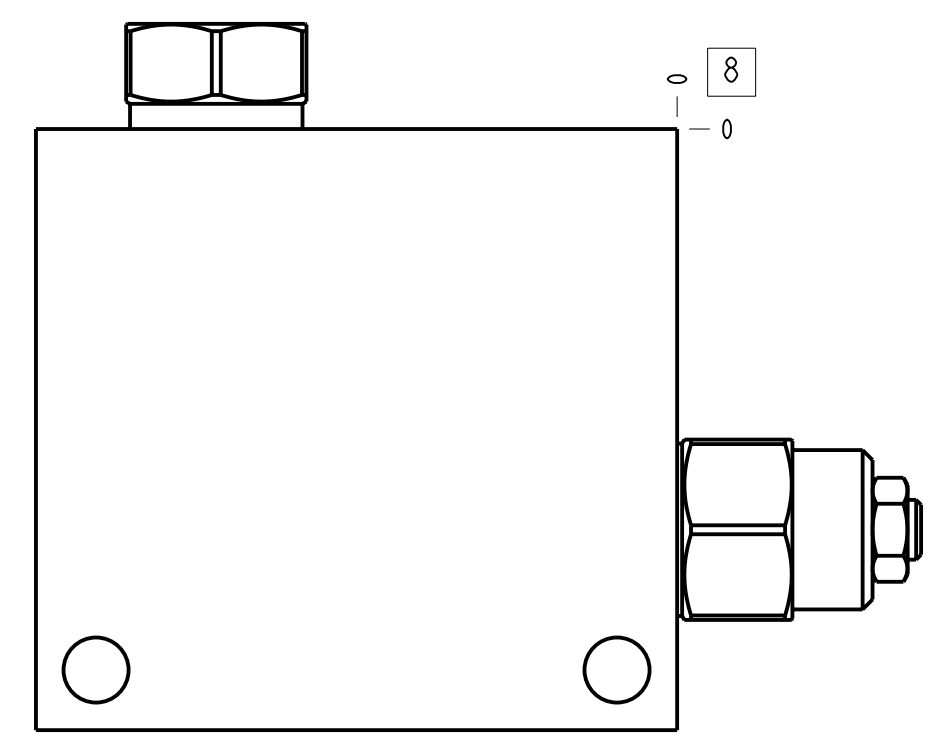
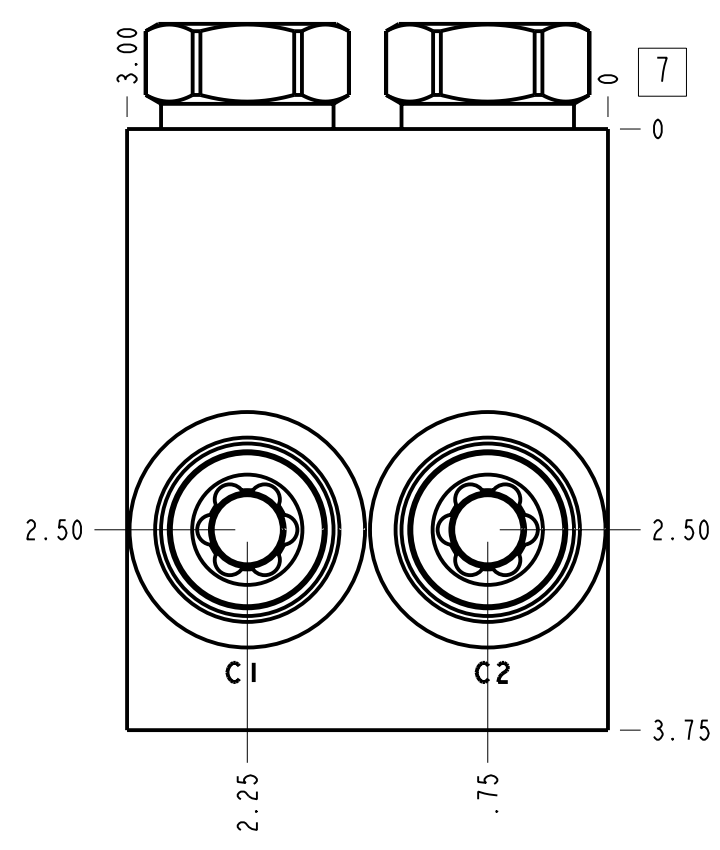
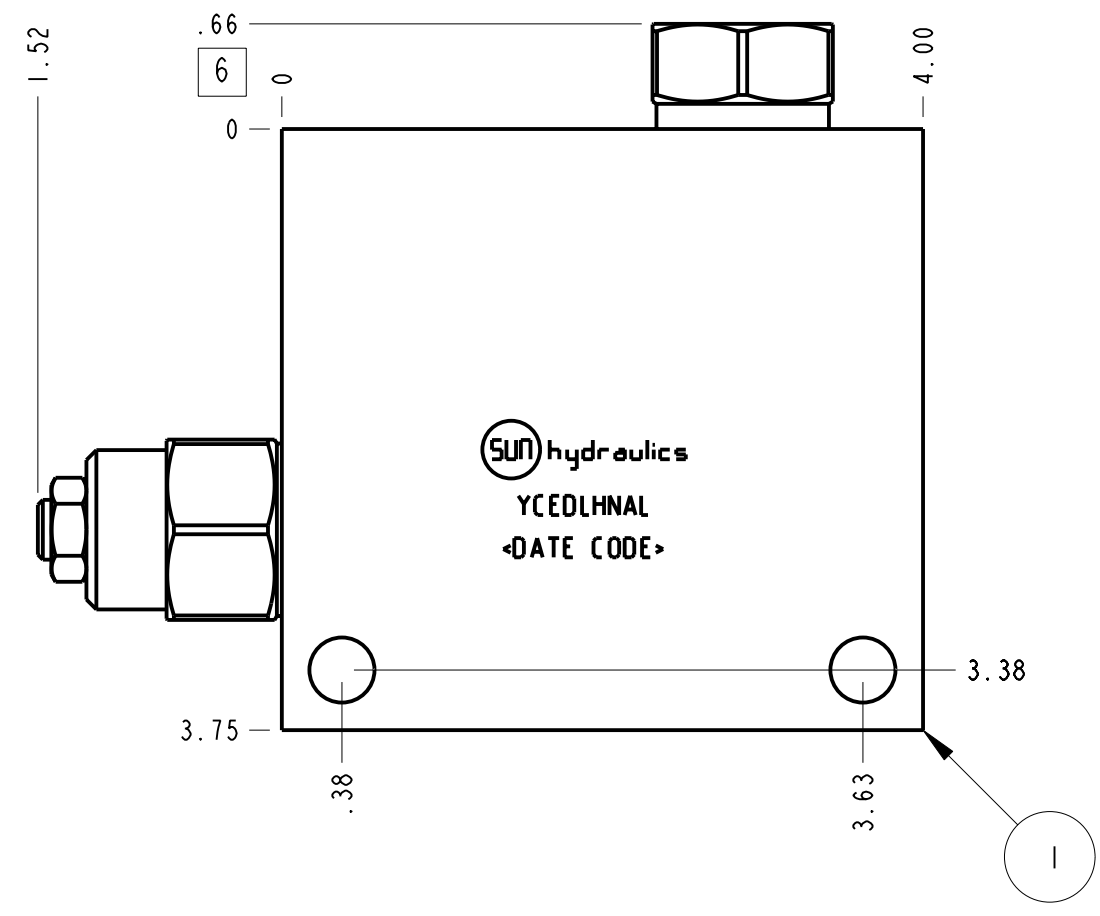
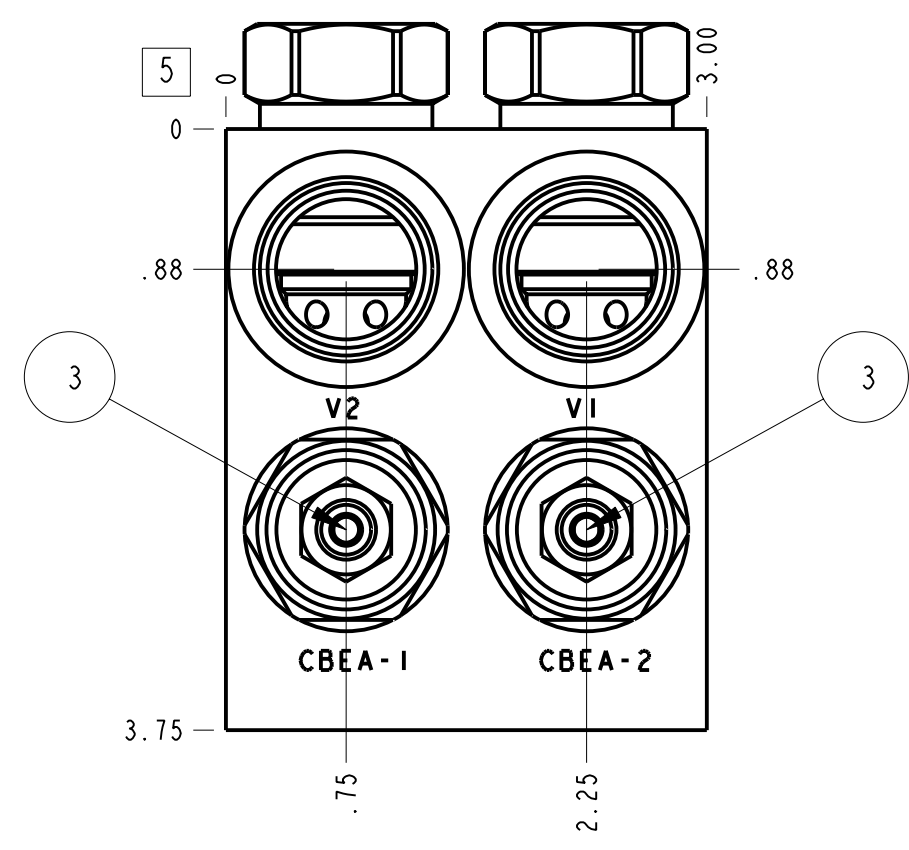


Technical Data	U.S. Units	Metric Units
Body Type	Line mount	
Weight	5.053 lb.	2,292 kg.
Capacity	30 gpm	120 L/min.
Mounting Hole Diameter	.41 in.	10,4 mm
Mounting Hole Depth	Through	
Mounting Hole Quantity	2	
PDF Drawing	PDF Drawing	



- Notes**
- Important: Carefully consider the maximum system pressure. The pressure rating of the manifold is dependent on the manifold material, with the port type/size a secondary consideration. Manifolds constructed of aluminum are not rated for pressures higher than 3000 psi (210 bar), regardless of the port type/size specified.
 - For detailed information regarding the cartridges contained in this assembly, click on the models codes shown in the Included Components tab.
 - This drawing is for reference only. It is generated by an automated process and does not fall under Sun's document control process.

Port Headings		
Product	Port	Size
YCEDLHNL	Ports C1, C2, V1, V2	SAE 12
YCEDLHNL	Port T	SAE 12

3	CBEALHN			COUNTERBALANCE VALVE	2
2	CXED-XCN			CHECK VALVE	2
1	150-052-004		6061-T6 ALUMINUM	BODY	1
ITEM	PART NO.	SETTING	MATERIAL	PART NAME	QTY
	MODEL			YCEDLHNL	ALL DIMENSIONS IN INCH VIEWS ARE THIRD ANGLE
DESCRIPTION			Line mount	DATE	SCALE
				Apr-13-23	0.835
				DWG SIZE	SHEET
				C	1

