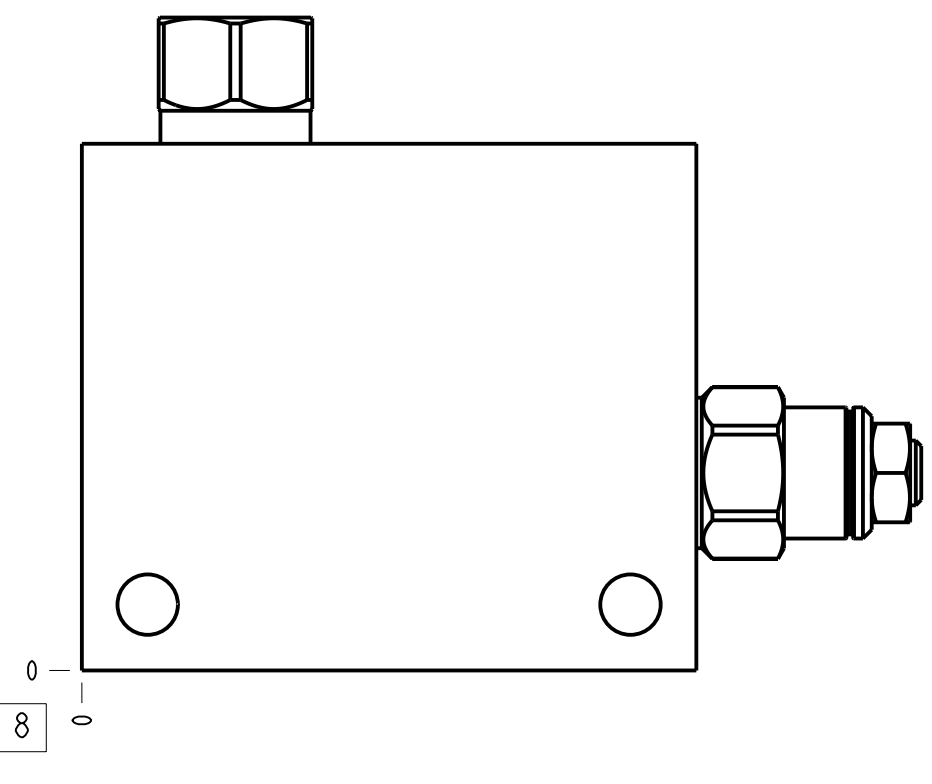
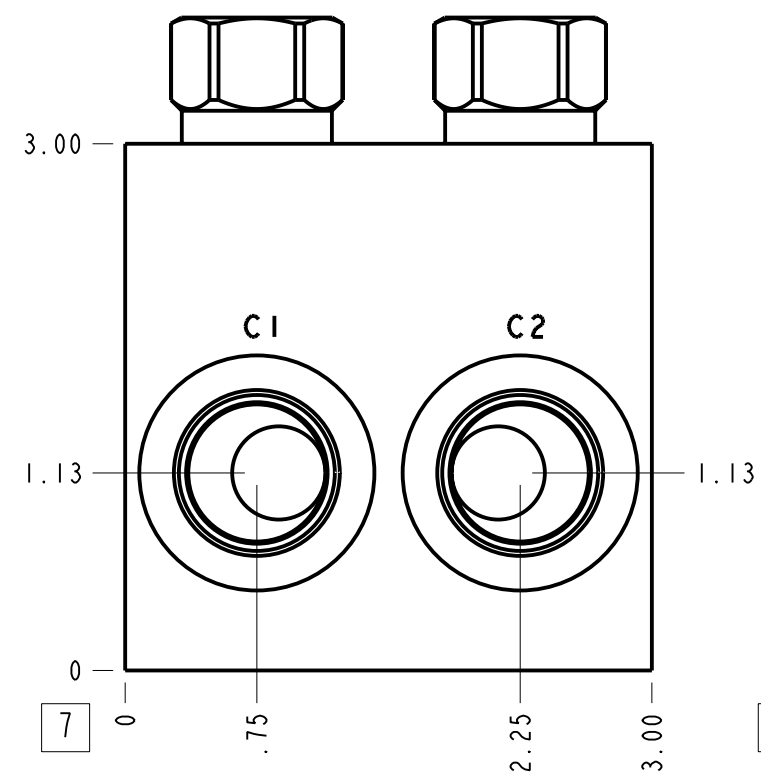
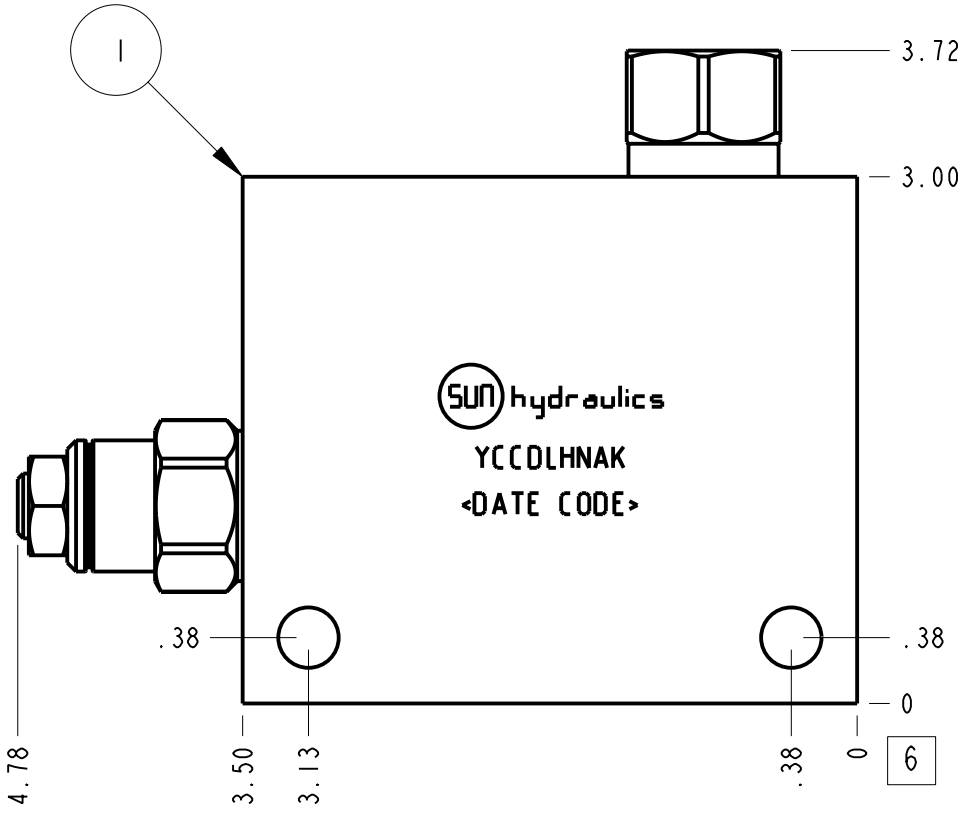
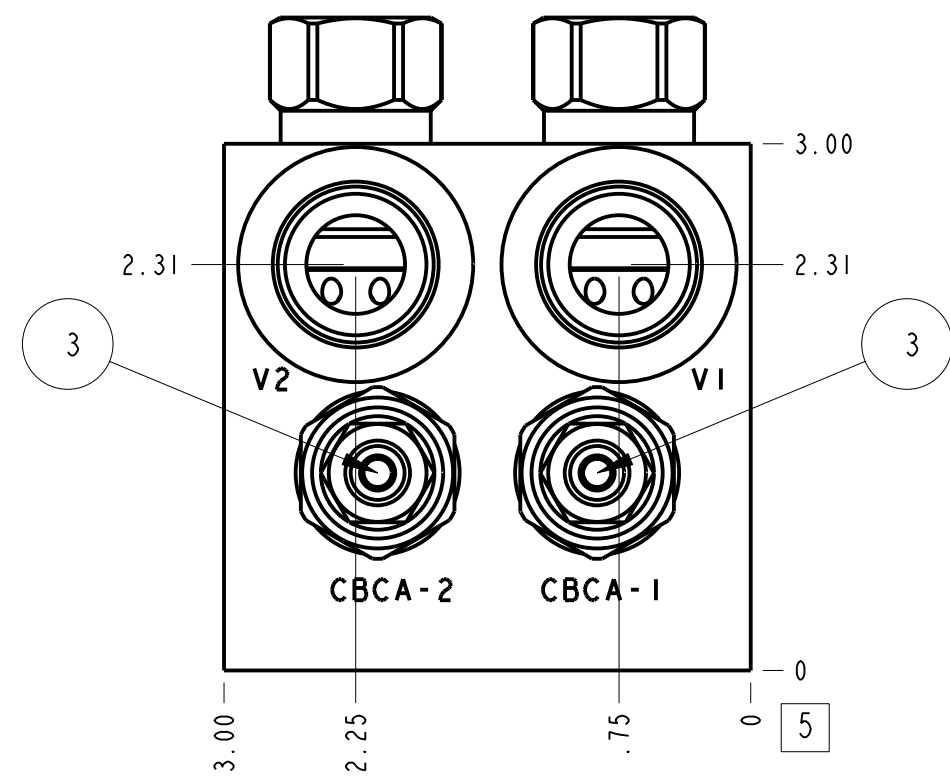
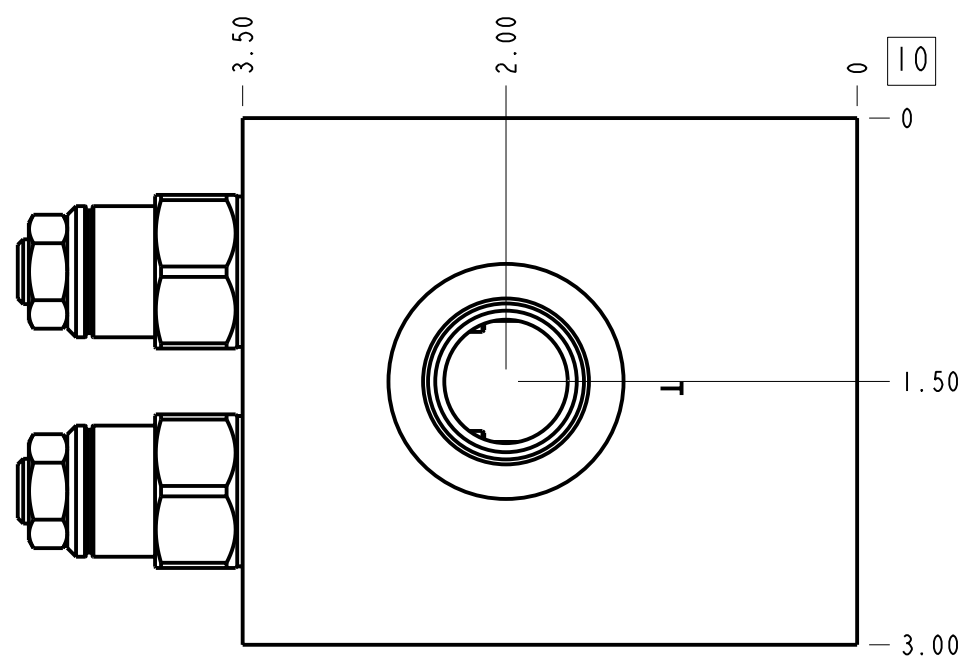


Technical Data	U.S. Units	Metric Units
Body Type	Line mount	
Weight	3.466 lb.	1,572 kg.
Capacity	15 gpm	60 L/min.
Mounting Hole Diameter	.34 in.	8.6 mm
Mounting Hole Depth	Through	
Mounting Hole Quantity	2	



- Notes**
- Important: Carefully consider the maximum system pressure. The pressure rating of the manifold is dependent on the manifold material, with the port type/size a secondary consideration. Manifolds constructed of aluminum are not rated for pressures higher than 3000 psi (210 bar), regardless of the port type/size specified.
  - All SAE o-ring porting per ISO 11926. All NPTF porting per ANSI B1.20.1. All BSPP porting parallel thread.
  - For detailed information regarding the cartridges contained in this assembly, click on the models codes shown in the Included Components tab.
  - This drawing is for reference only. It is generated by an automated process and does not fall under Sun's document control process.



Port Headings		
Product	Port	Size
YCCDLHNAK	Ports C1, C2, V1, V2	SAE 10
YCCDLHNAK	Port T	SAE 10

3	CBCA-LHN			COUNTERBALANCE VALVE	2
2	CXCD-XCN			CHECK VALVE	2
1	150-587-004		6061-T6 ALUMINUM	BODY	1
ITEM	PART NO.	SETTING	MATERIAL	PART NAME	QTY
	MODEL			YCCDLHNAK	
DESCRIPTION			Line mount	ALL DIMENSIONS IN INCH VIEWS ARE THIRD ANGLE	
DATE	SCALE	DWG SIZE	SHEET	FIRST ANGLE THIRD ANGLE	
May-30-23	0.914	C	1		