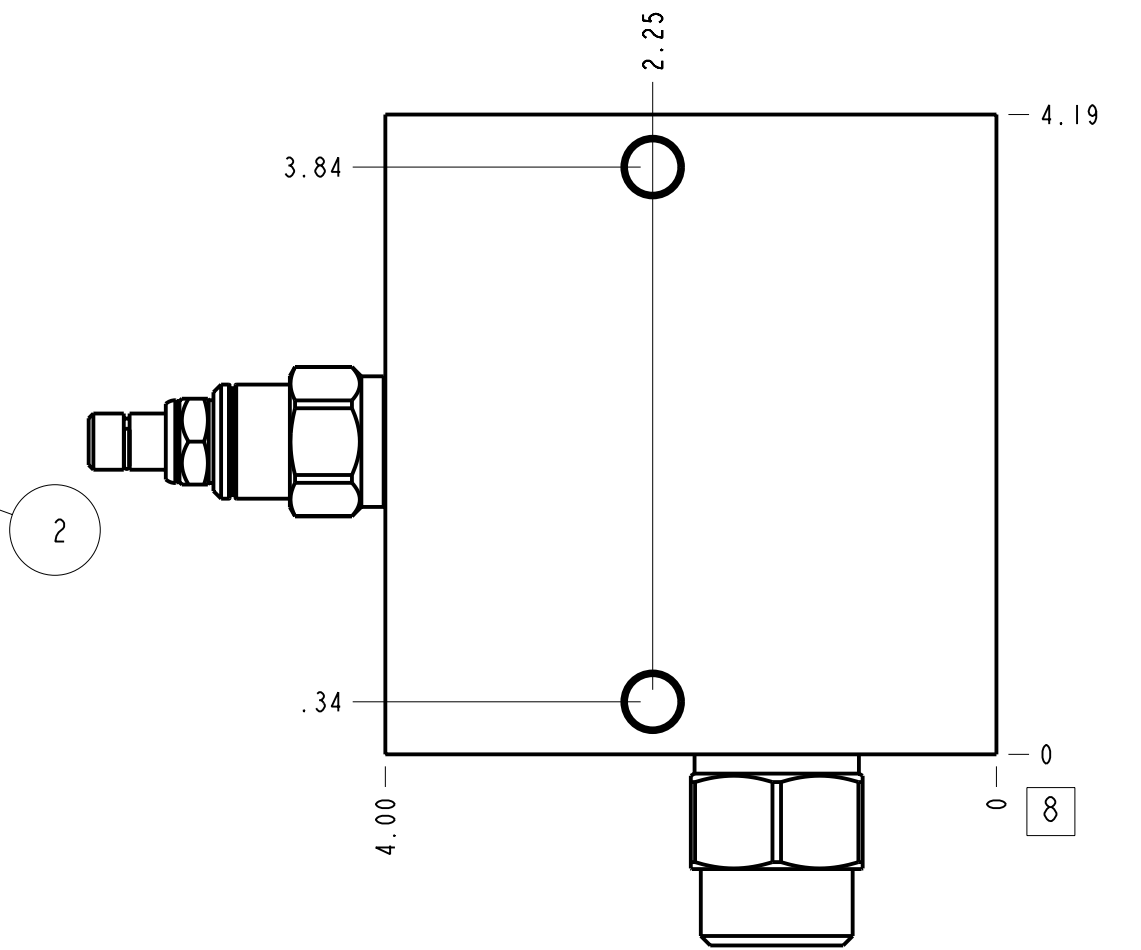
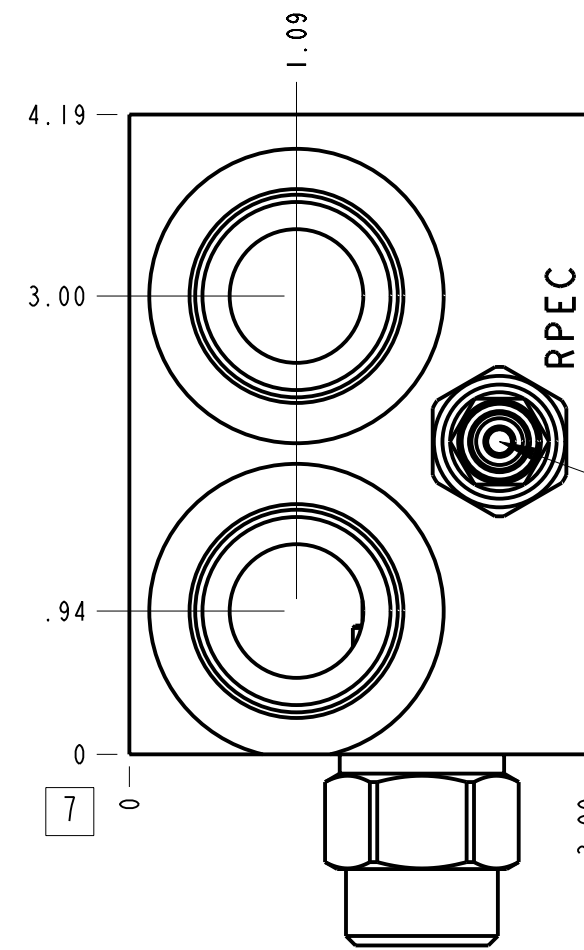
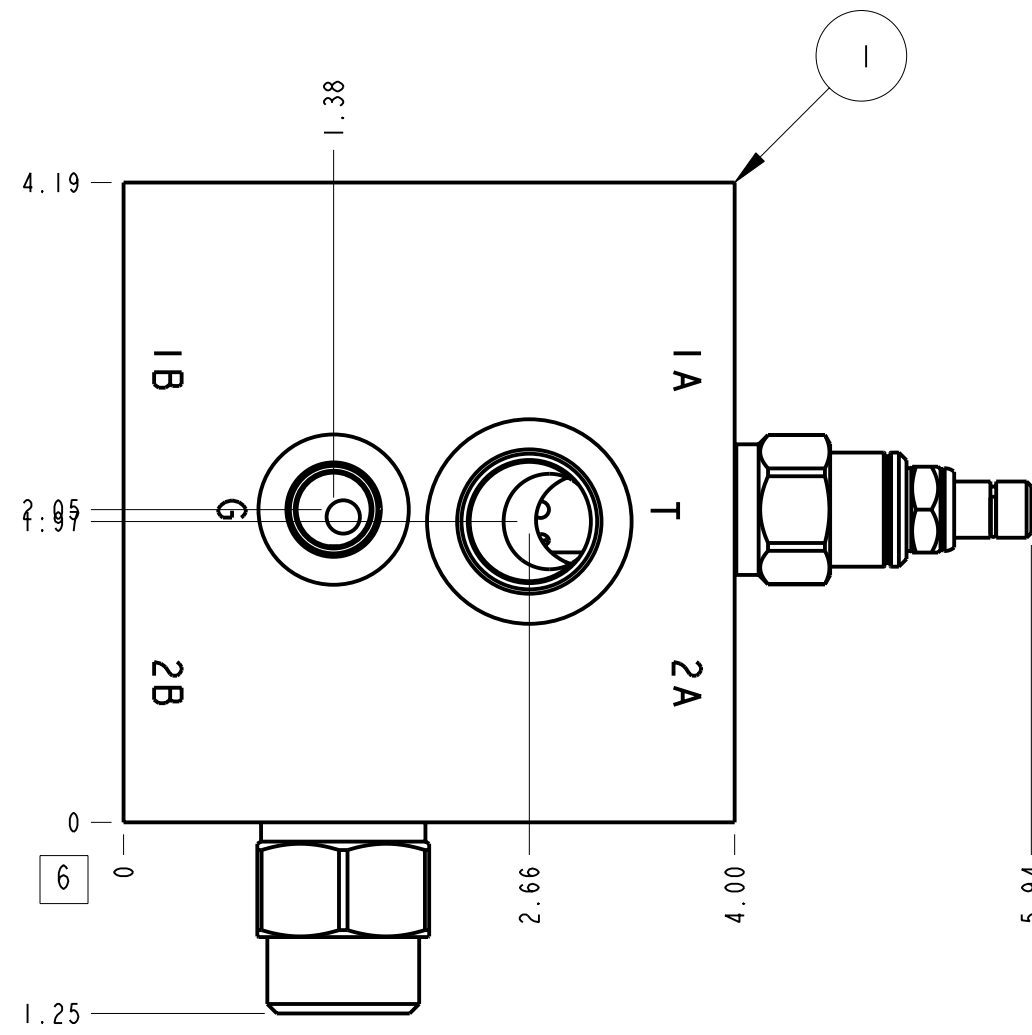
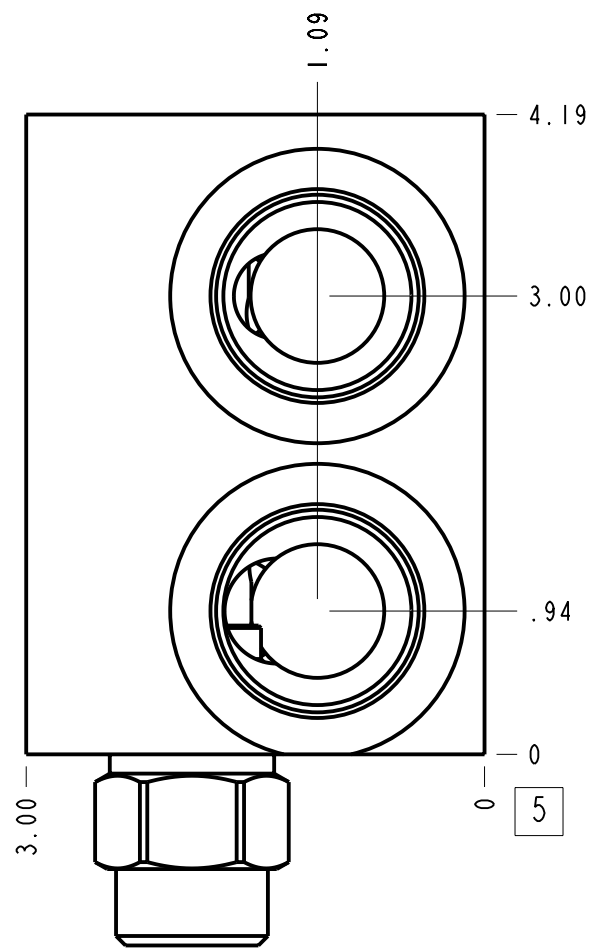
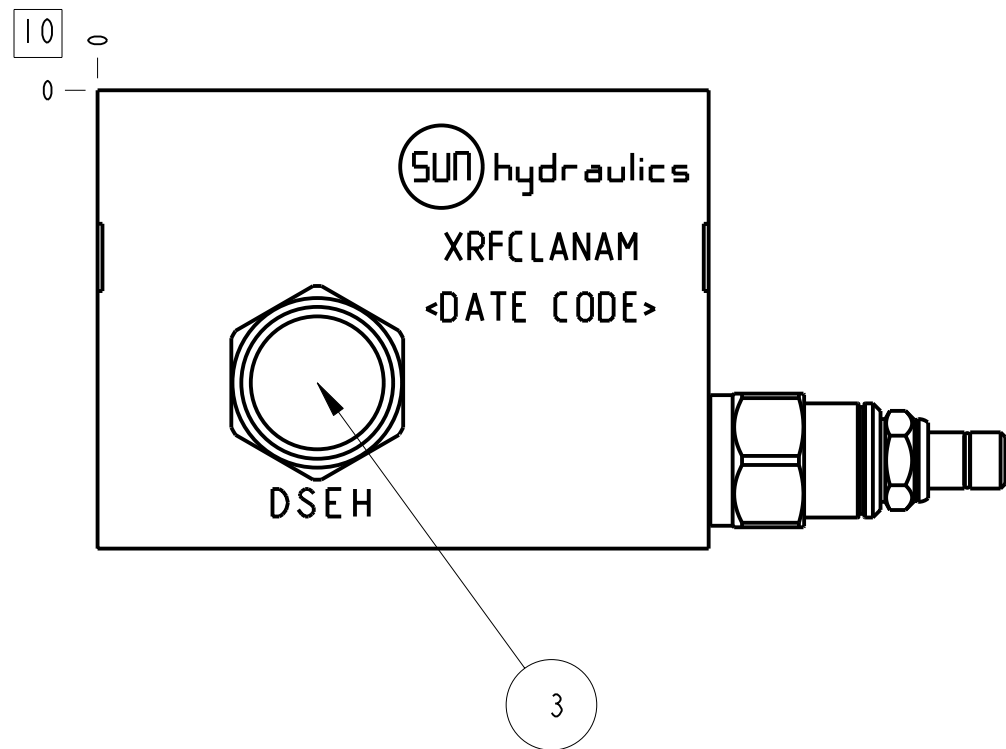


Technical Data	U.S. Units	Metric Units
Body Type	Line mount	
Weight	4.732 lb.	2,146 kg.
Capacity	20 gpm	80 L/min.
Maximum Operating Pressure - 6061-T651 Aluminum	3000 psi	210 bar
Maximum Operating Pressure - 65-45-12 Ductile Iron	5000 psi	350 bar
Mounting Hole Quantity	2	



**Notes**

- Important: Carefully consider the maximum system pressure. The pressure rating of the manifold is dependent on the manifold material, with the port type/size a secondary consideration. Manifolds constructed of aluminum are not rated for pressures higher than 3000 psi (210 bar), regardless of the port type/size specified.
- For detailed information regarding the cartridges contained in this assembly, click on the models codes shown in the Included Components tab.
- This drawing is for reference only. It is generated by an automated process and does not fall under Sun's document control process.



Port Headings		
Product	Port	Size
XRFCLANAM	Ports 1 & 2	SAE 16
XRFCLANAM	Port T	SAE 10
XRFCLANAM	Gage Port	SAE 6
XRFCLANAM	Mtg Holes	.375 - 16UNC x .62 DP

3	DSEH-XHN			SHUTTLE VALVE	1
2	RPECLAN			RELIEF VALVE	1
1	152-459-001		6061-T6 ALUMINUM	BODY	1
I T E M	PART NO.	SETTING	MATERIAL	PART NAME	Q T Y

MODEL		XRFCLANAM		ALL DIMENSIONS IN INCH VIEWS ARE THIRD ANGLE		FIRST ANGLE		THIRD ANGLE	
DESCRIPTION		Line mount		DATE	SCALE	DWG SIZE	SHEET		
				May-07-24	0.796	C	1		