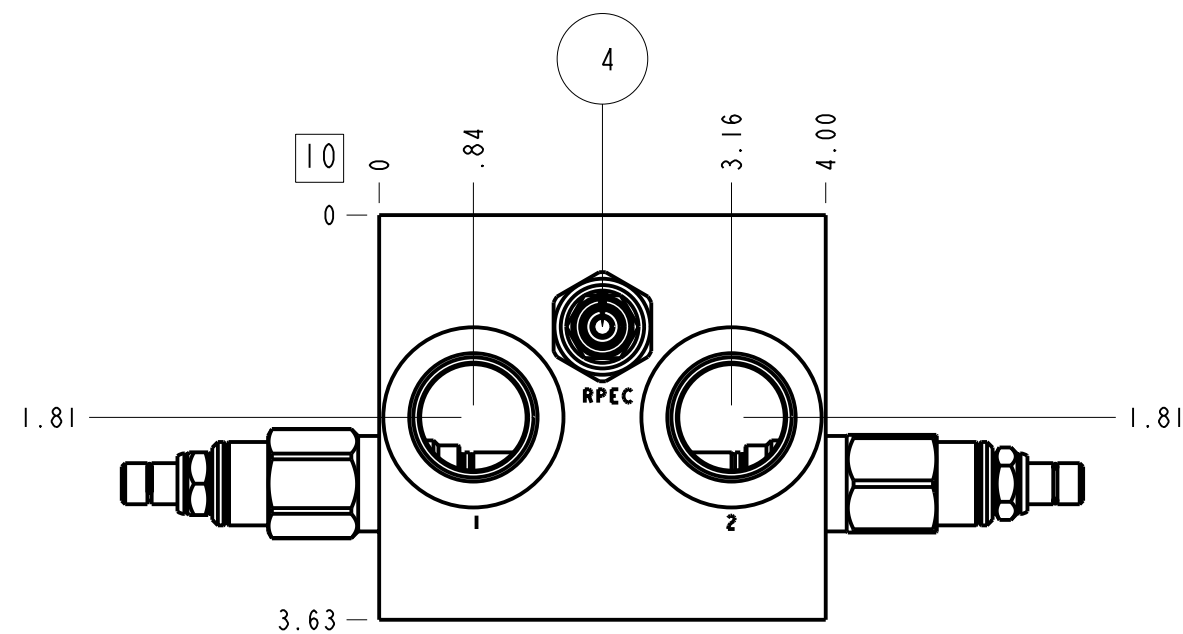
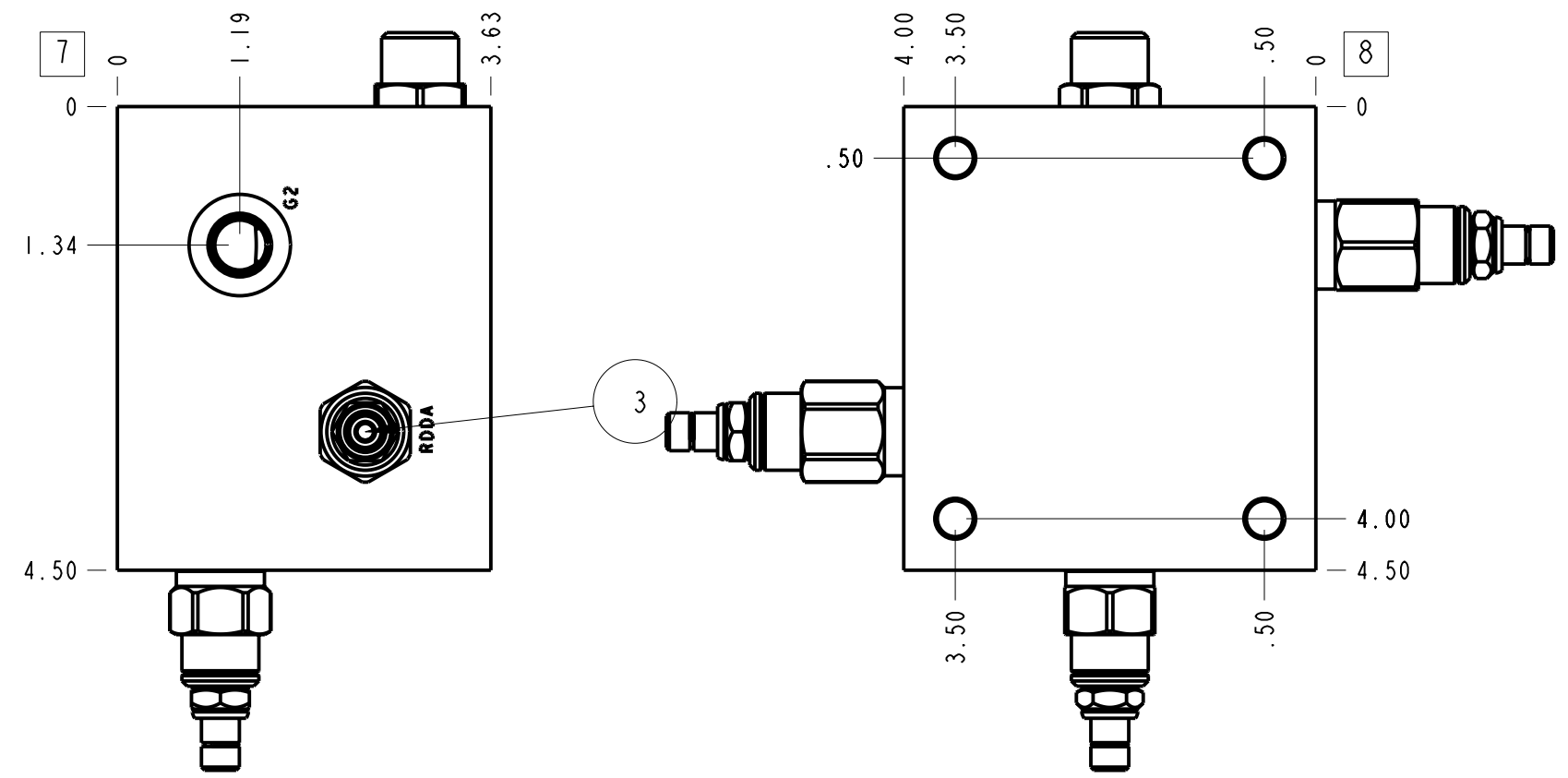
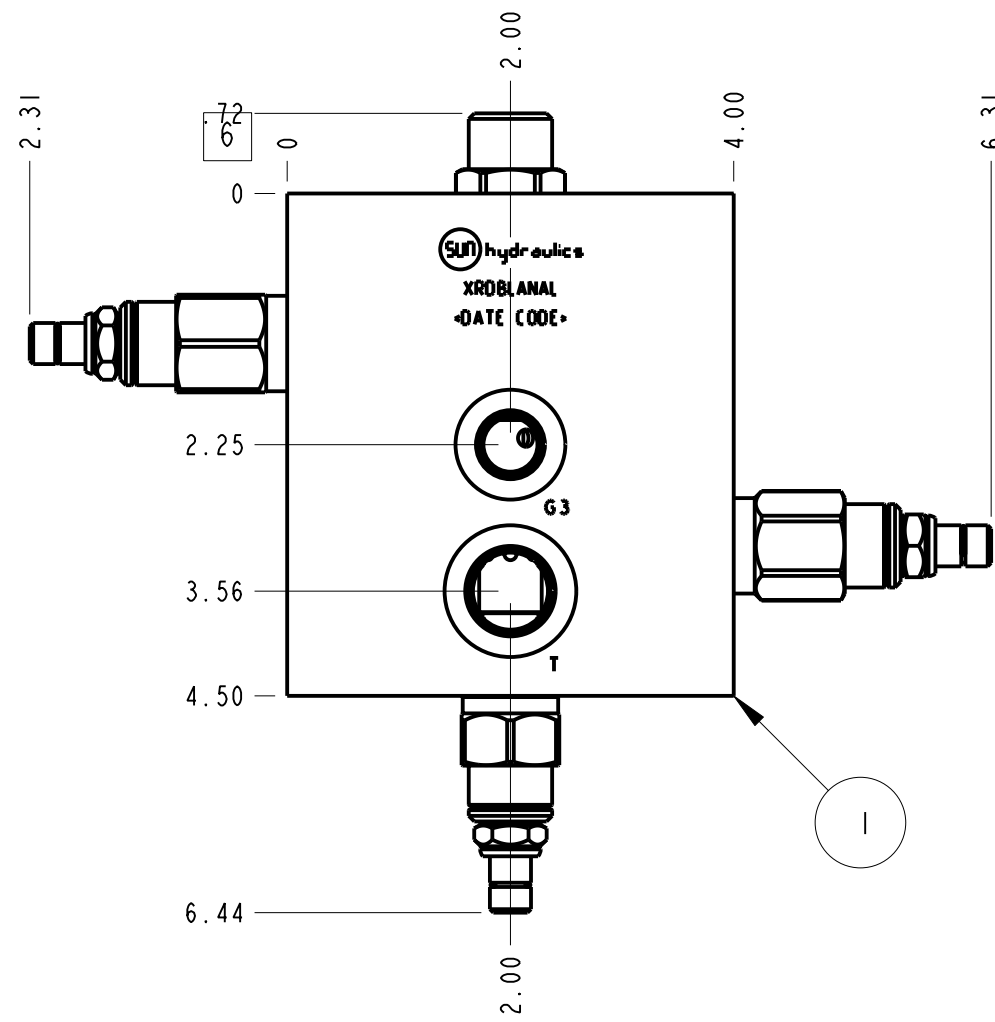
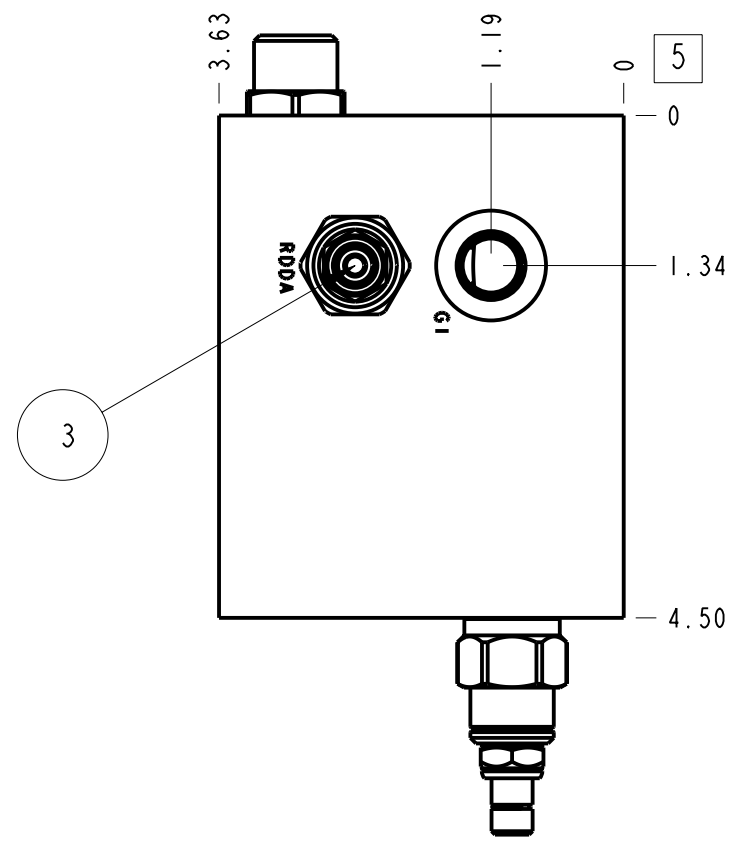
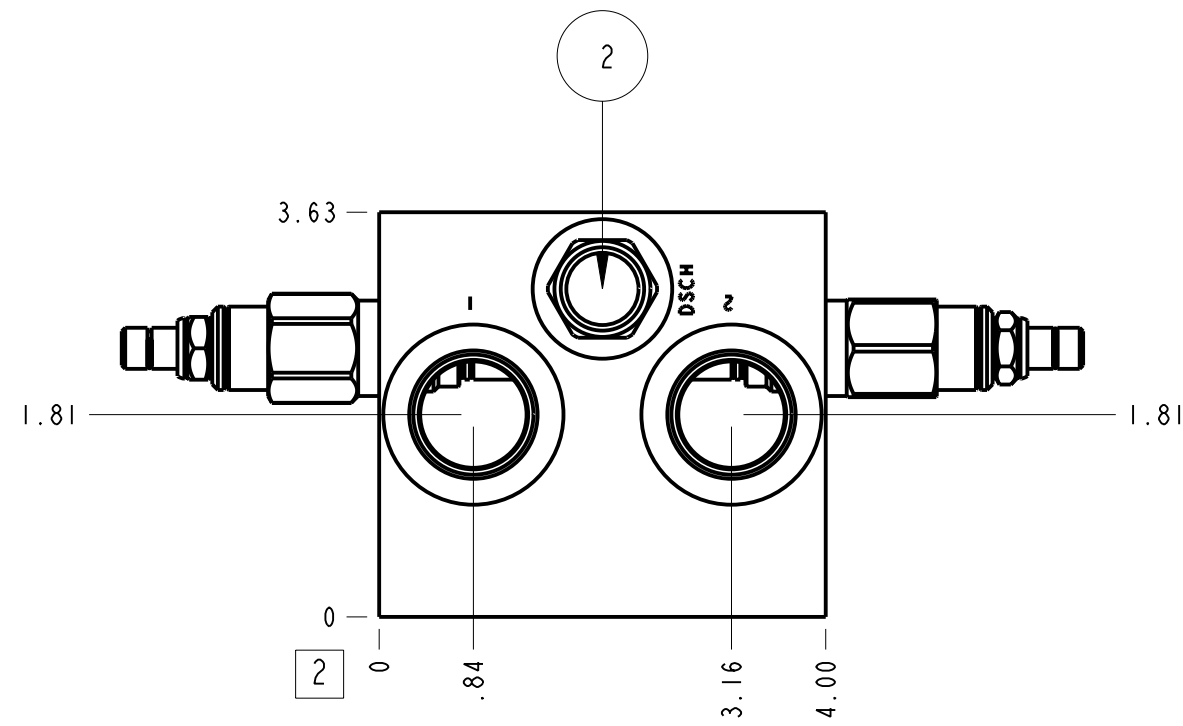


Technical Data		U.S. Units	Metric Units
Body Type		Line mount	
Weight		6.523 lb.	2,959 kg.
Capacity		10 gpm	40 L/min.
Maximum Operating Pressure - 6061-T651 Aluminum		3000 psi	210 bar
Maximum Operating Pressure - 65-45-12 Ductile Iron		5000 psi	350 bar
Mounting Hole Quantity		4	



Notes

1. A mechanical brake is recommended to positively lock any stopped live load.
2. Important: Carefully consider the maximum system pressure. The pressure rating of the manifold is dependent on the manifold material, with the port type/size a secondary consideration. Manifolds constructed of aluminum are not rated for pressures higher than 3000 psi (210 bar), regardless of the port type/size specified.
3. For detailed information regarding the cartridges contained in this assembly, click on the models codes shown in the Included Components tab.
4. This drawing is for reference only. It is generated by an automated process and does not fall under Sun's document control process.

Port Headings		
Product	Port	Size
XRDBLANAL	Ports 1 & 2	SAE 12
XRDBLANAL	Port T	SAE 8
XRDBLANAL	Gage Ports	SAE 6
XRDBLANAL	Mtg Holes	.375 - 16UNC x .62 DP

4	RPECLNN			RELIEF VALVE	1
3	RDDA-LAN			RELIEF VALVE	2
2	DSCX-XHN			SHUTTLE VALVE	1
1	152-730-001		6061-T6 ALUMINUM	BODY	1
ITEM	PART NO.	SETTING	MATERIAL	PART NAME	QTY

MODEL		XRDBLANAL		ALL DIMENSIONS IN INCH VIEWS ARE THIRD ANGLE		FIRST ANGLE		THIRD ANGLE	
DESCRIPTION		Line mount		DATE	SCALE	DWG SIZE	SHEET		
				Jul-10-24	0.581	C	1		