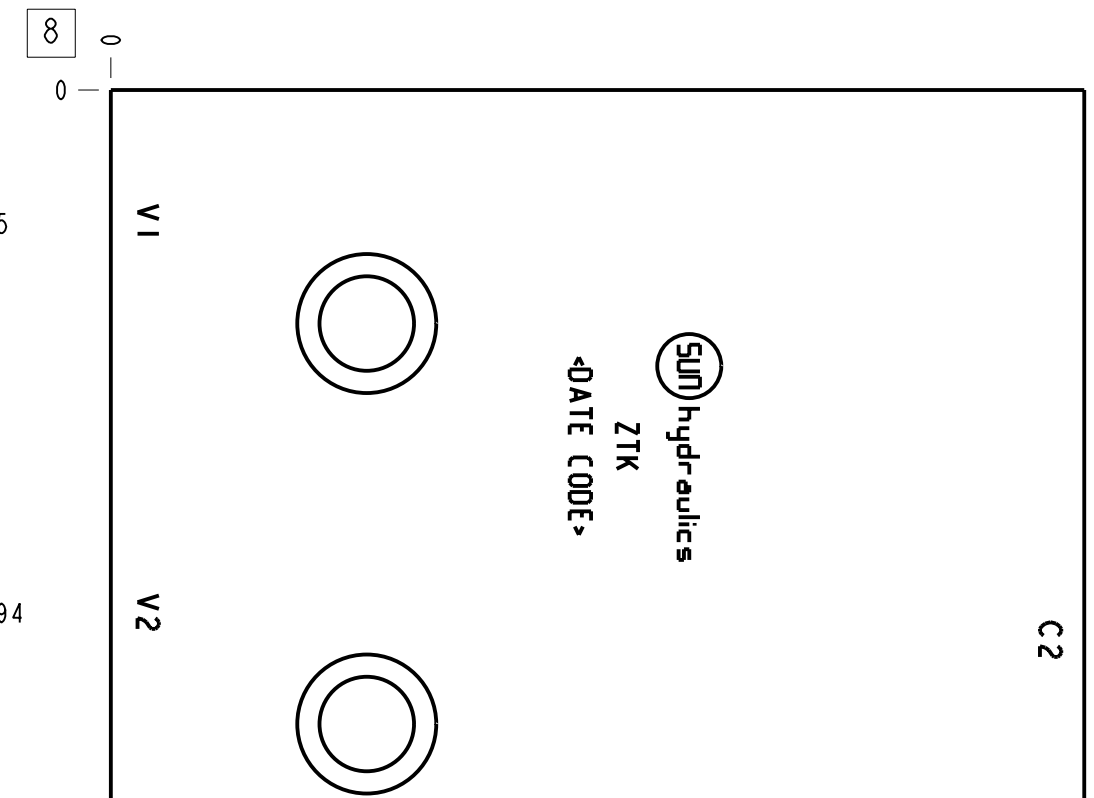
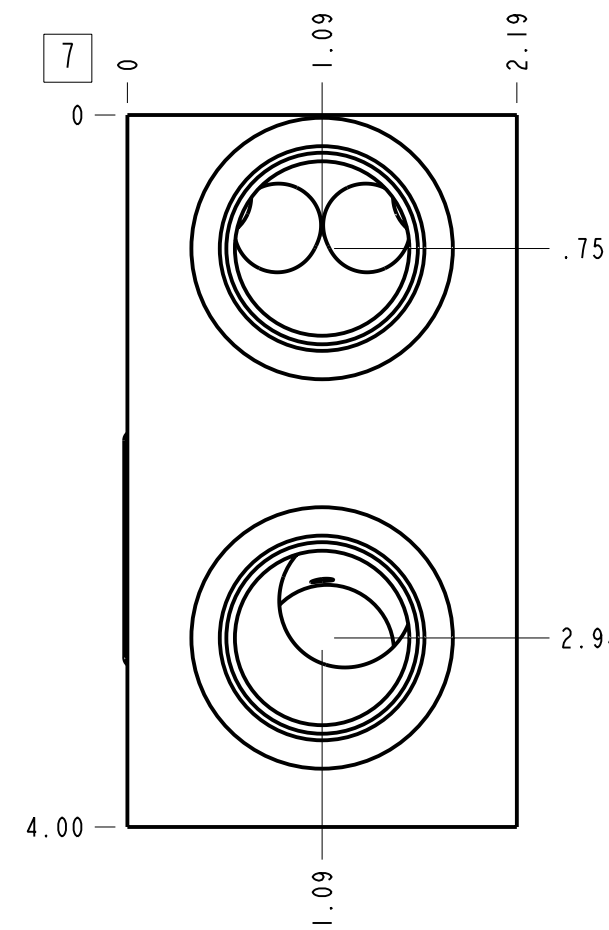
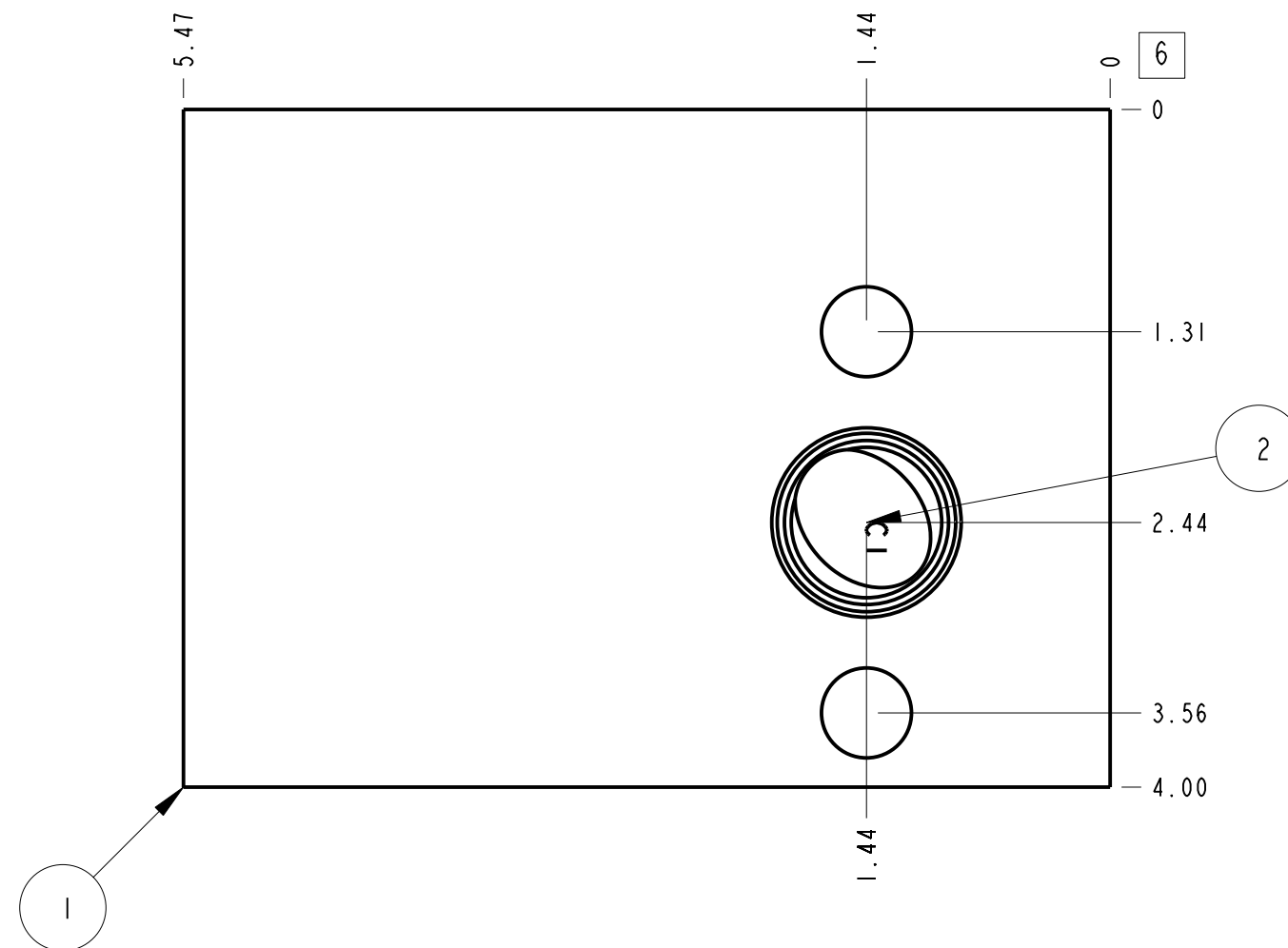
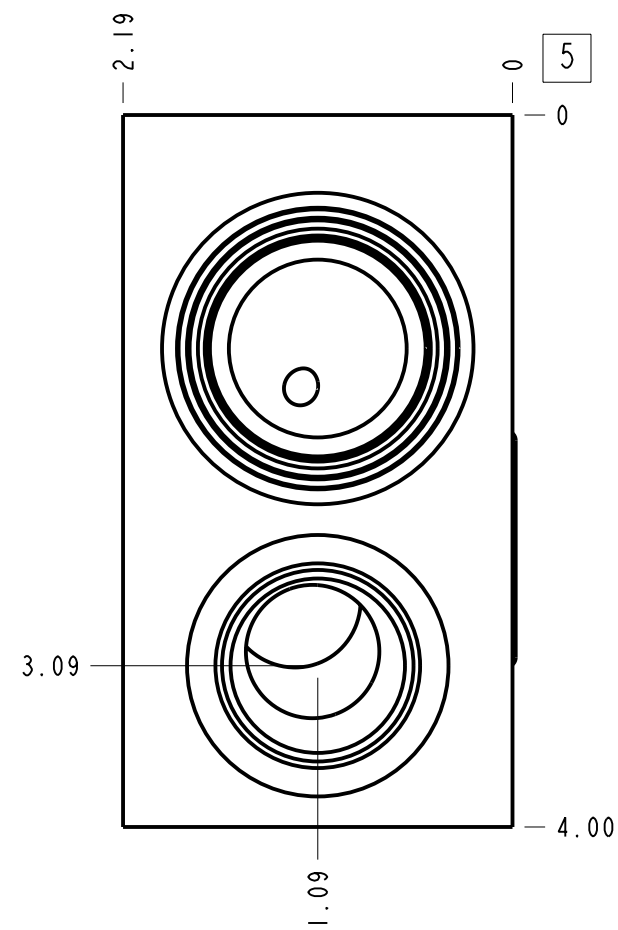
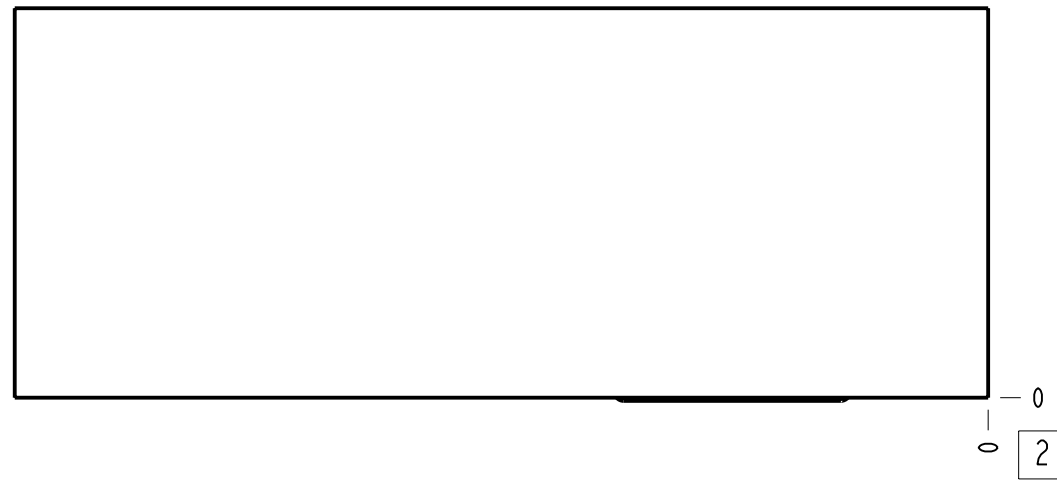
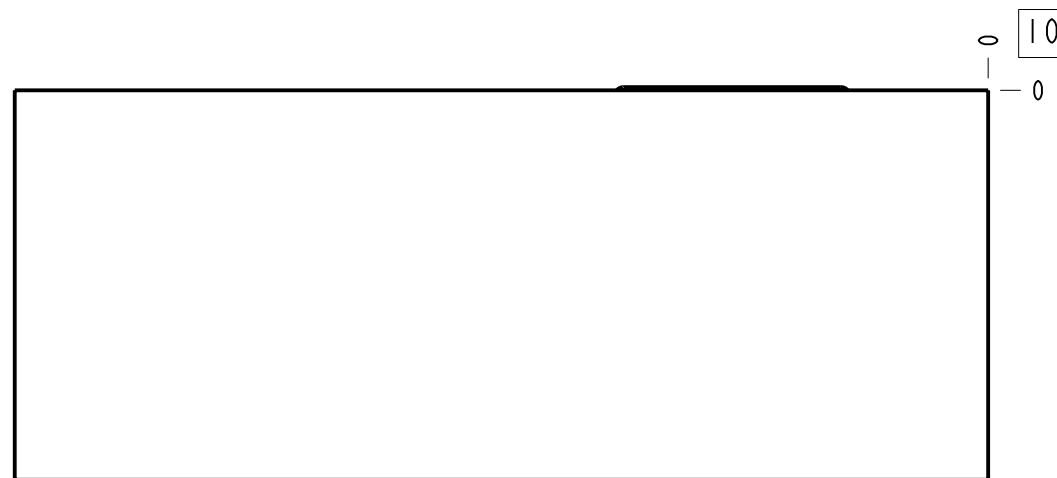


Technical Data	U.S. Units	Metric Units
Cavity	T-17A	
Body Features	Direct mount, cross pilot	
Body Type	Gasket mount	
Interface	Sun	
Open Cavity Quantity	1	
Weight	3.505 lb.	1,590 kg.
Mounting Hole Diameter	.53 in.	13,5 mm
Mounting Hole Depth	Through	
Mounting Hole Quantity	2	
Mounting Hole C'bore Diameter	.78 in.	19,8 mm
Mounting Hole C'bore Depth	.44 in.	11,1 mm



Notes

- Important: Carefully consider the maximum system pressure. The pressure rating of the manifold is dependent on the manifold material, with the port type/size a secondary consideration. Manifolds constructed of aluminum are not rated for pressures higher than 3000 psi (210 bar), regardless of the port type/size specified.
- This drawing is for reference only. It is generated by an automated process and does not fall under Sun's document control process.



Port Headings		
Product	Port	Size
ZTK	Ports C2, V1, V2	SAE 12

2	500-001-121		N-0674-70	O-RING	1
1	150-801-002		6061-T6 ALUMINUM	BODY	1
ITEM	PART NO.	SETTING	MATERIAL	PART NAME	QTY
	MODEL		ZTK	ALL DIMENSIONS IN INCH VIEWS ARE THIRD ANGLE	FIRST ANGLE THIRD ANGLE
DESCRIPTION			T-17A Gasket mount Sun Direct mount, cross pilot	DATE	JUL-02-24
			SCALE	0.927	DWG SIZE
				C	SHEET
				1	

