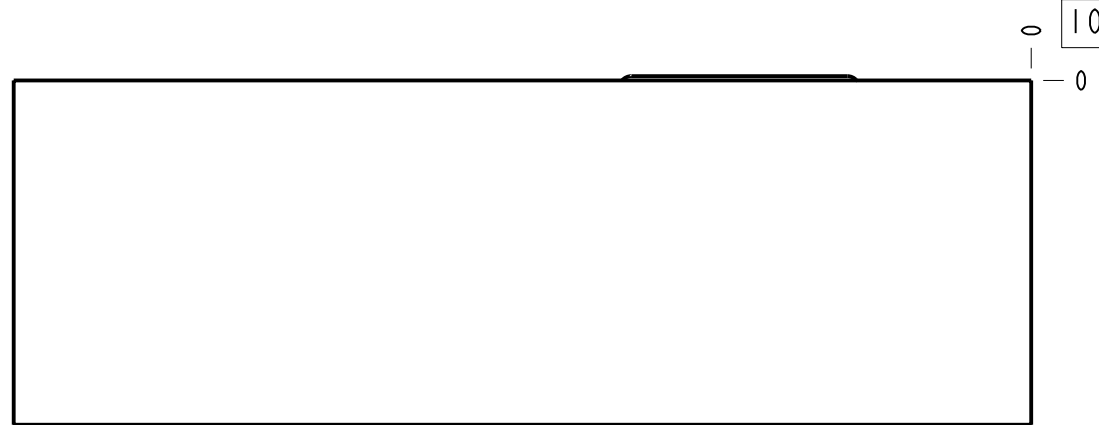
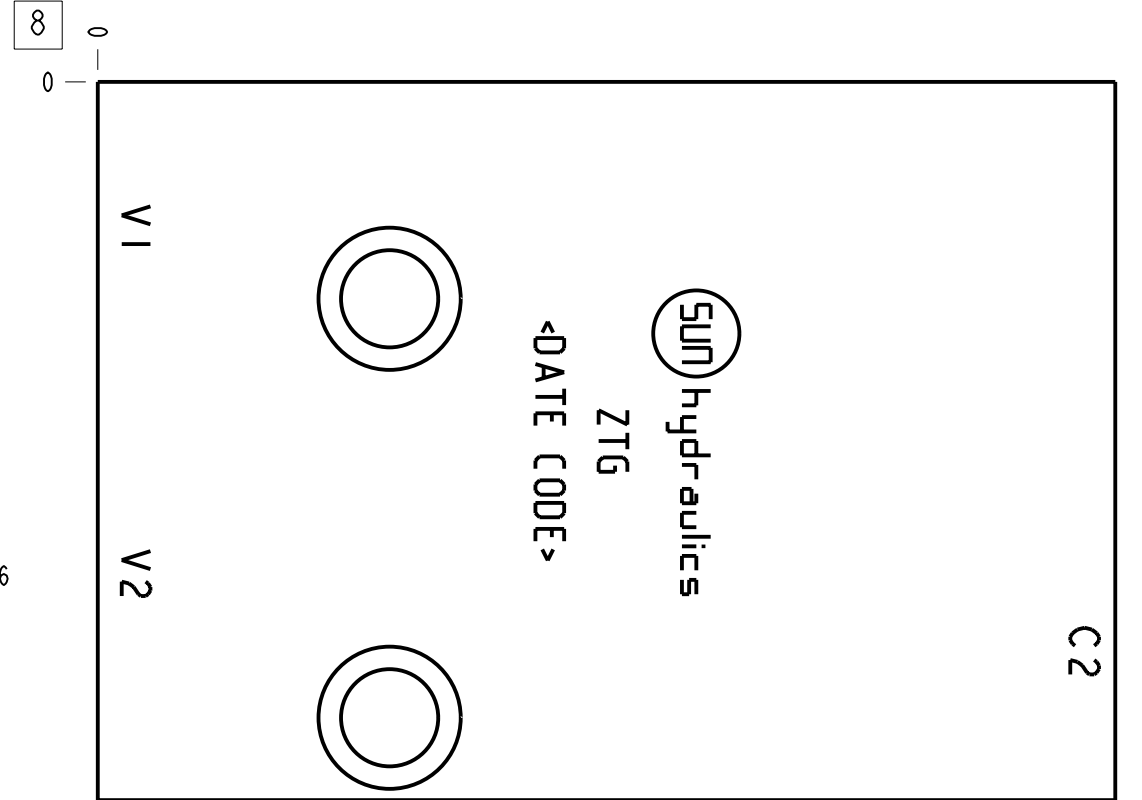
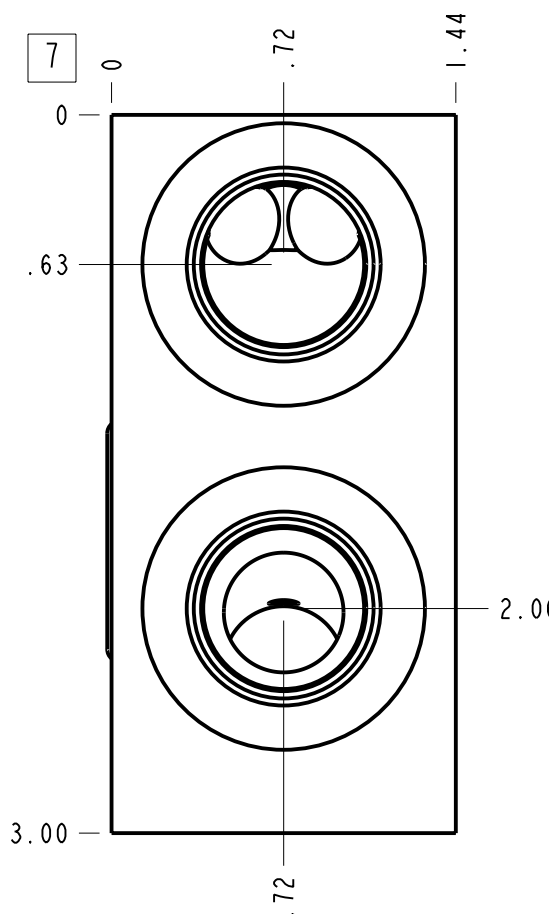
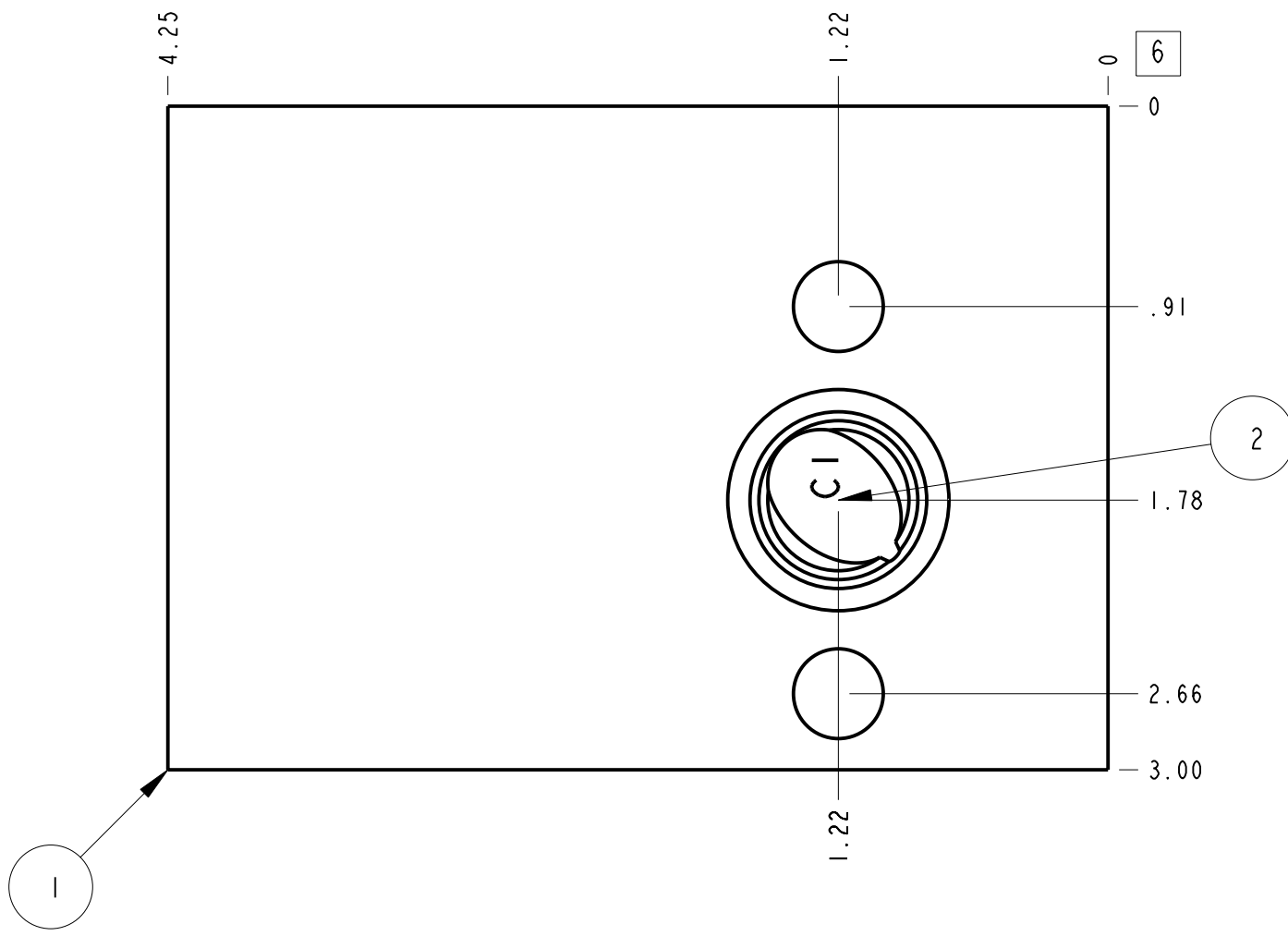
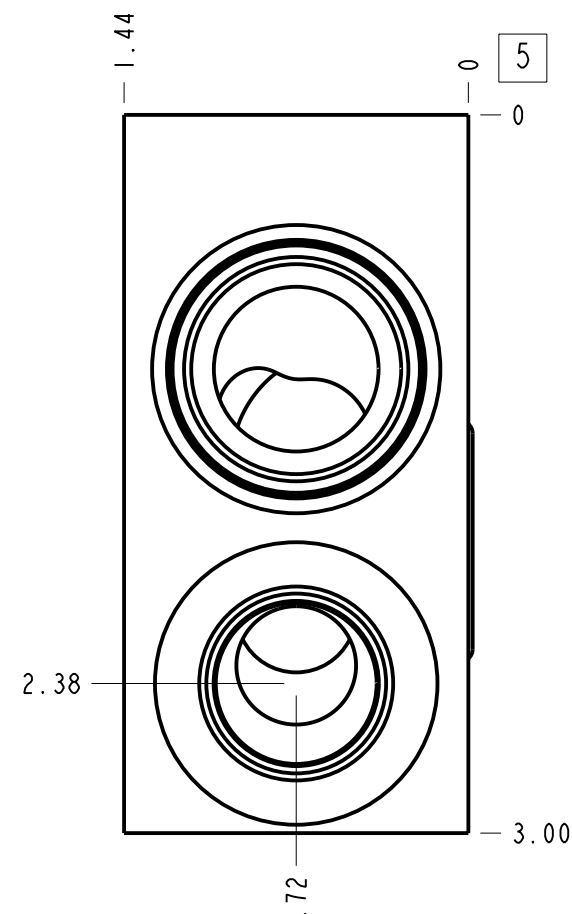


Technical Data	U.S. Units	Metric Units
Cavity	T-2A	
Body Features	Direct mount, cross pilot	
Body Type	Gasket mount	
Interface	Sun	
Open Cavity Quantity	1	
Weight	1.353 lb.	0,614 kg.
Mounting Hole Diameter	.42 in.	10,7 mm
Mounting Hole Depth	Through	
Mounting Hole Quantity	2	
Mounting Hole C'bore Diameter	.59 in.	15,0 mm
Mounting Hole C'bore Depth	.31 in.	8 mm



**Notes**

- Important: Carefully consider the maximum system pressure. The pressure rating of the manifold is dependent on the manifold material, with the port type/size a secondary consideration. Manifolds constructed of aluminum are not rated for pressures higher than 3000 psi (210 bar), regardless of the port type/size specified.
- This drawing is for reference only. It is generated by an automated process and does not fall under Sun's document control process.

Port Headings		
Product	Port	Size
ZTG	Ports C2, V1, V2	SAE 8
ZTG	Port C1	.75 DIA MAX

2	500-001-117		N-0674-70	O-RING	1
1	150-780-002		6061-T6 ALUMINUM	BODY	1
ITEM	PART NO.	SETTING	MATERIAL	PART NAME	QTY
MODEL			ZTG	ALL DIMENSIONS IN INCH VIEWS ARE THIRD ANGLE	
DESCRIPTION			T-2A Gasket mount Sun Direct mount, cross pilot	DATE	JUN-13-24
			SCALE	1.247	DWG SIZE
			C	SHEET	1

