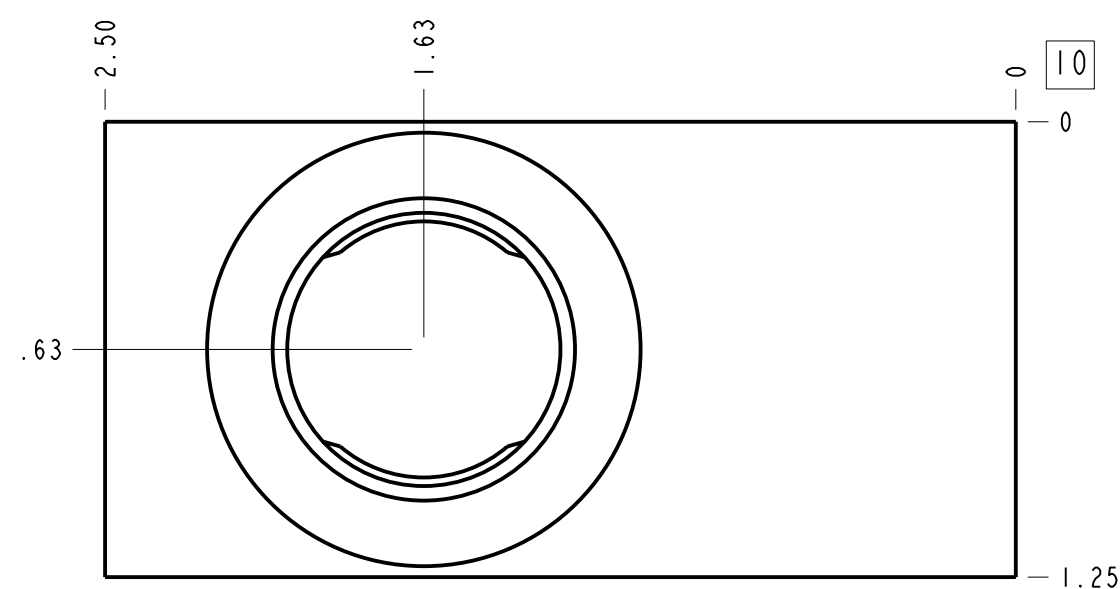
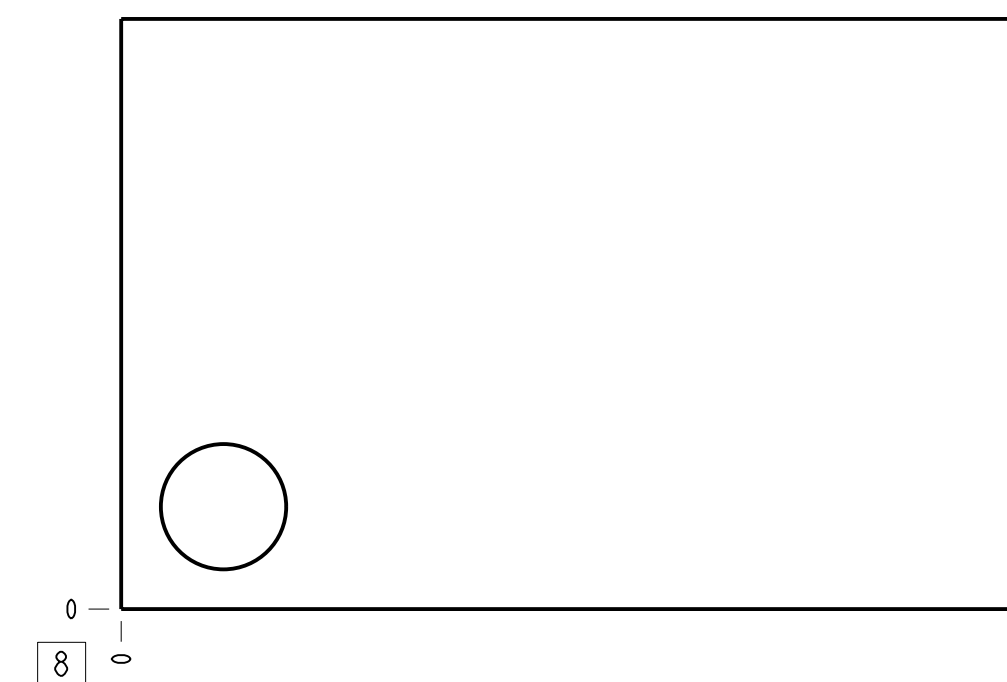
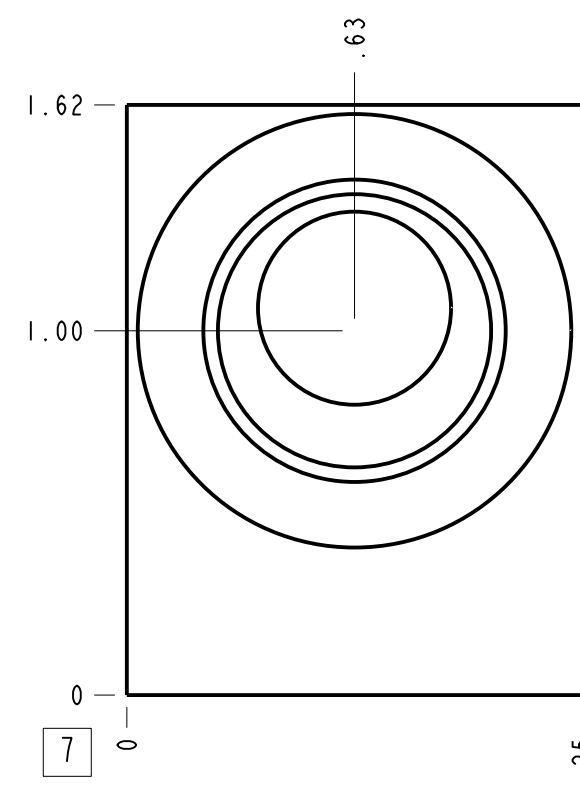
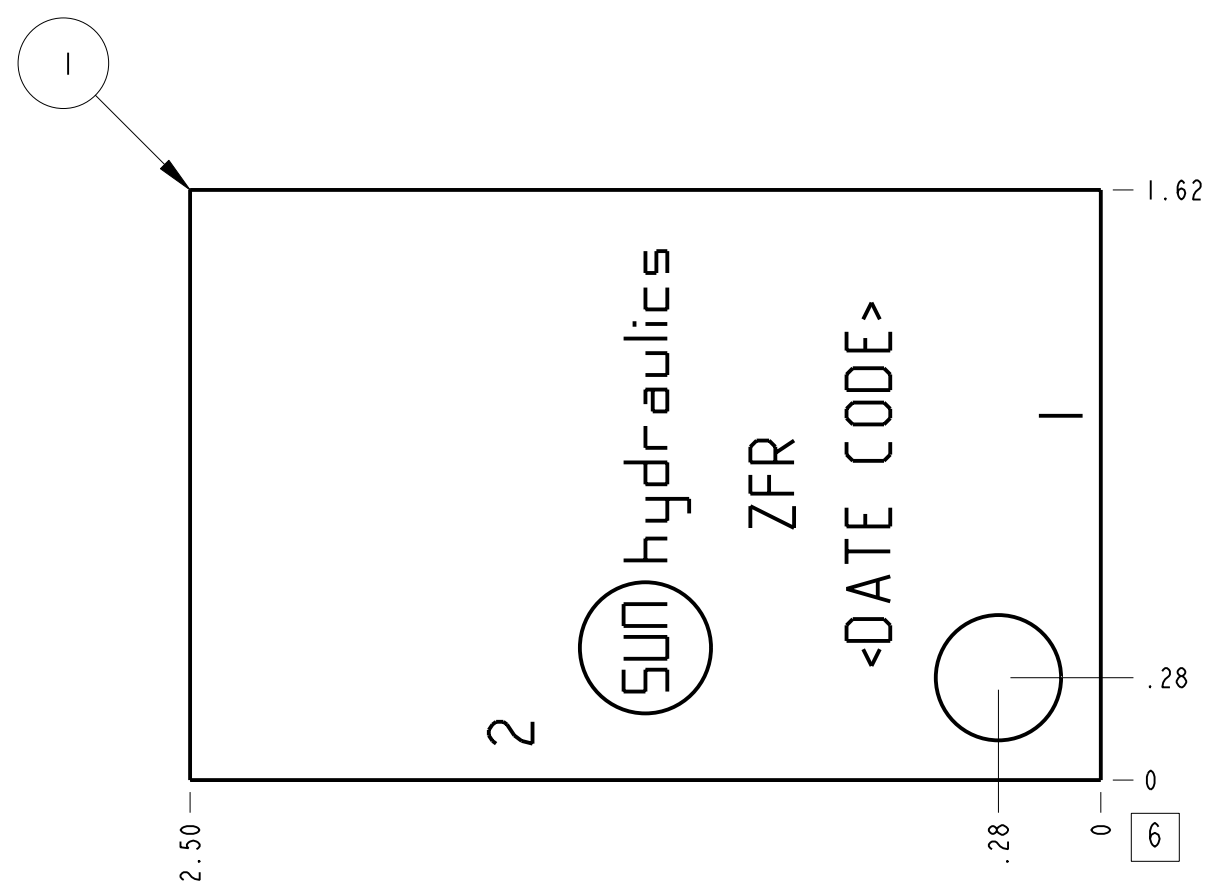
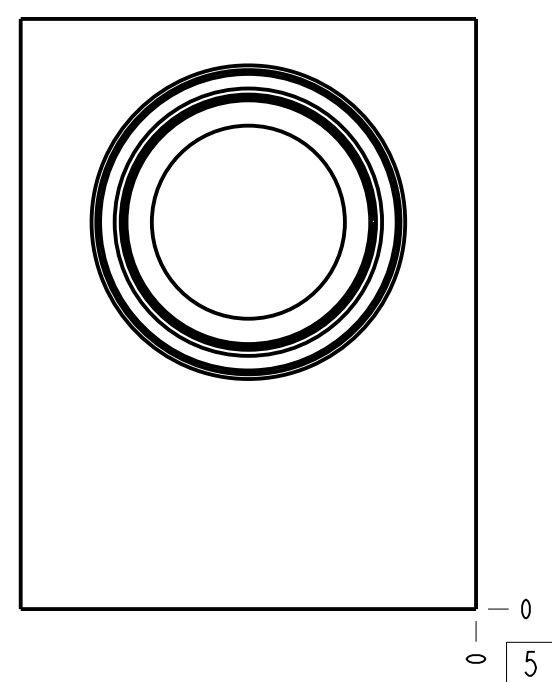
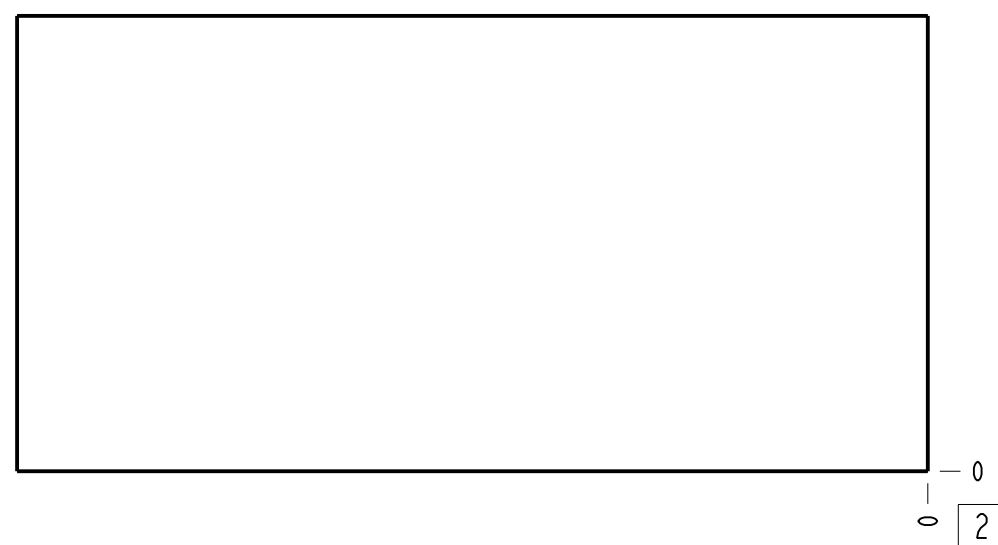


Technical Data	U.S. Units	Metric Units
Cavity		T-10A
Body Features		Ninety degree
Body Type		Line mount
Interface		None
Open Cavity Quantity		1
Weight	0.344 lb.	0,156 kg.
Mounting Hole Diameter	.34 in.	8.6 mm
Mounting Hole Depth		Through
Mounting Hole Quantity		1



Notes

- Important: Carefully consider the maximum system pressure. The pressure rating of the manifold is dependent on the manifold material, with the port type/size a secondary consideration. Manifolds constructed of aluminum are not rated for pressures higher than 3000 psi (210 bar), regardless of the port type/size specified.
- This drawing is for reference only. It is generated by an automated process and does not fall under Sun's document control process.

Port Headings		
Product	Port	Size
ZFR	All Ports	1/2" BSPP

I	150-186-009		6061-T6 ALUMINUM	BODY	I
I T E M	PART NO.	SETTING	MATERIAL	PART NAME	Q T Y
MODEL	ZFR		ALL DIMENSIONS IN INCH VIEWS ARE THIRD ANGLE		FIRST ANGLE THIRD ANGLE
DESCRIPTION	T-10A Line mount Ninety degree	DATE Sep-12-23	SCALE 1.897	DWG SIZE C	SHEET 1

