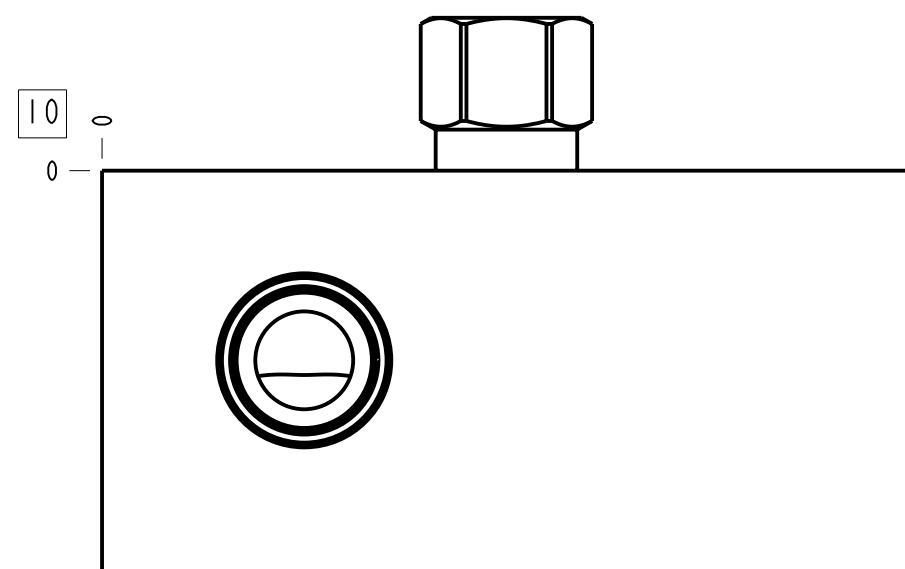
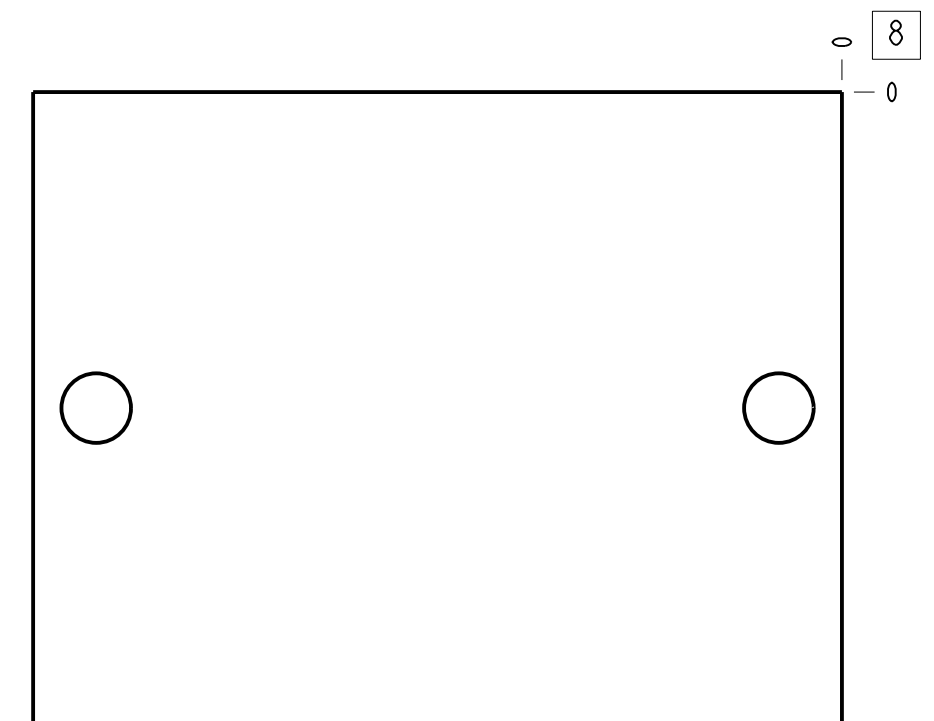
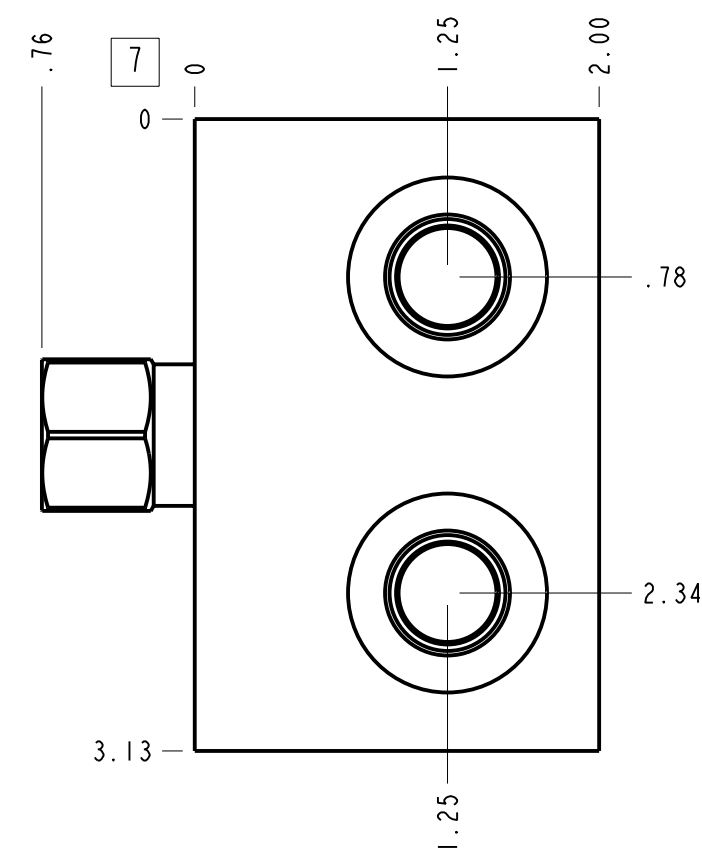
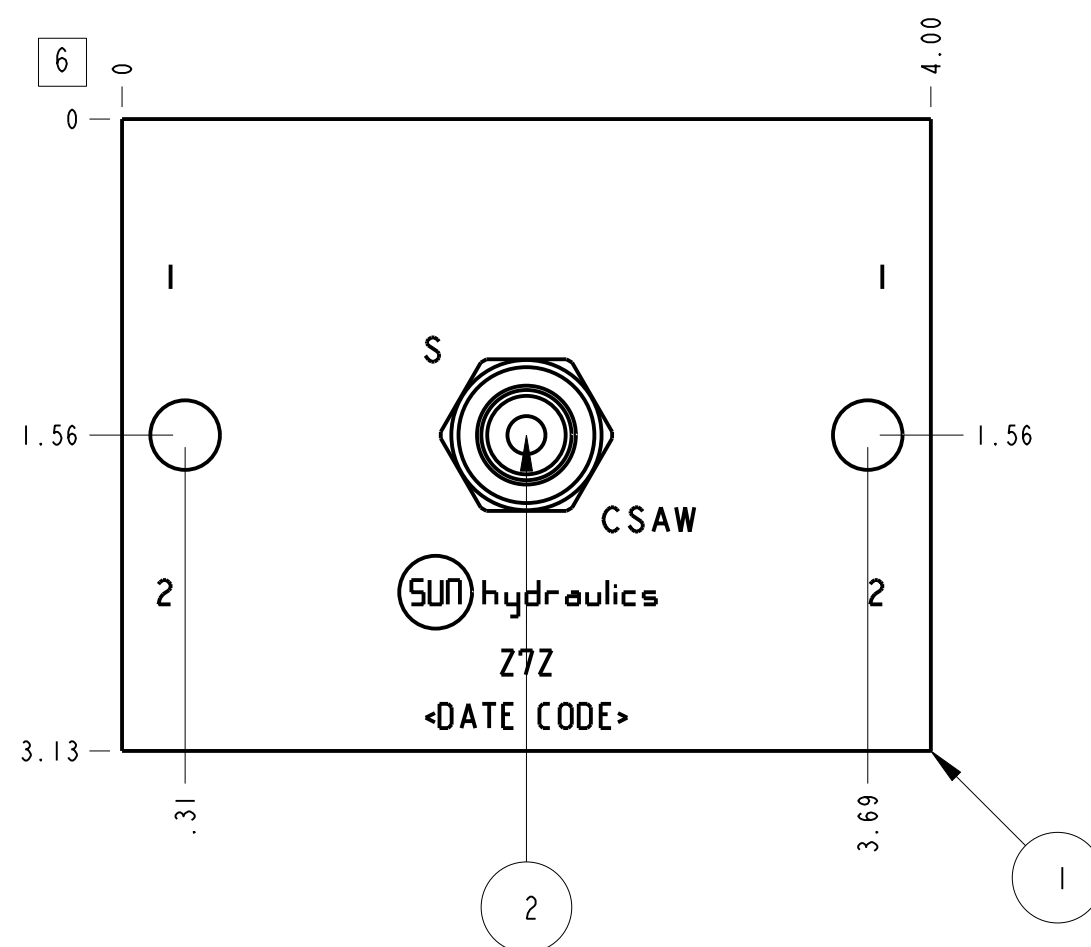
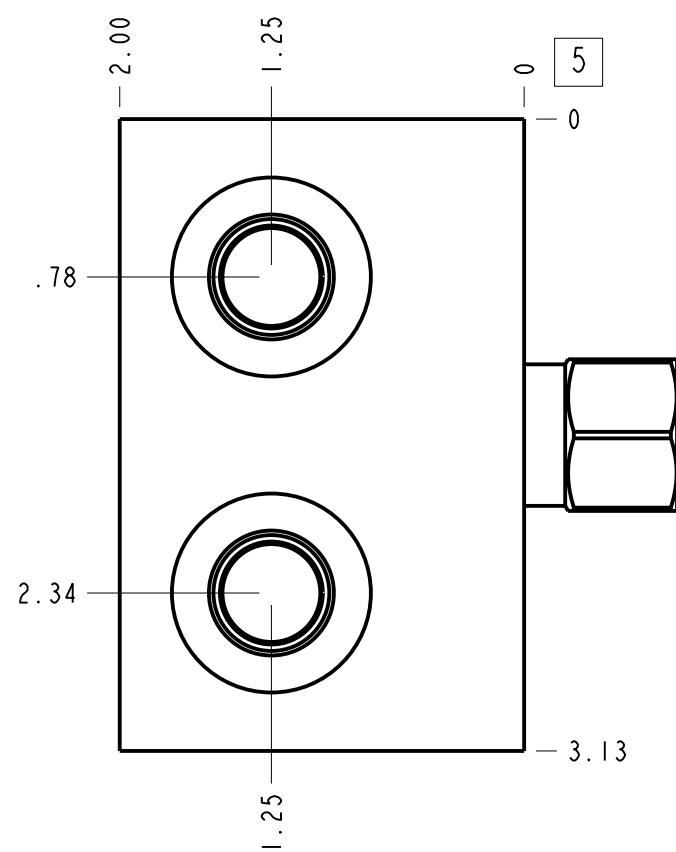


Technical Data	U.S. Units	Metric Units
Cavity	T-10A	
Body Features	Cross port with shuttle	
Body Type	Line mount	
Interface	None	
Open Cavity Quantity	2	
Weight	2.202 lb.	0.999 kg.
Mounting Hole Diameter	.34 in.	8.6 mm
Mounting Hole Depth	Through	
Mounting Hole Quantity	2	
Includes integral cartridge(s)	Yes (see Included Components)	



Notes

1. Port S is the external connection at the top of the shuttle cartridge.
2. Important: Carefully consider the maximum system pressure. The pressure rating of the manifold is dependent on the manifold material, with the port type/size a secondary consideration. Manifolds constructed of aluminum are not rated for pressures higher than 3000 psi (210 bar), regardless of the port type/size specified.
3. This drawing is for reference only. It is generated by an automated process and does not fall under Sun's document control process.

Port Headings		
Product	Port	Size
Z7Z	Ports 1 & 2	SAE 6
Z7Z	Shuttle Port	SAE 4

2	CSAWEXN			SHUTTLE VALVE	1
1	154-079-004		6061-T6 ALUMINUM	BODY	1
ITEM	PART NO.	SETTING	MATERIAL	PART NAME	QTY
	MODEL				
Z7Z			ALL DIMENSIONS IN INCH VIEWS ARE THIRD ANGLE		FIRST ANGLE
DESCRIPTION			DATE	SCALE	DWG SIZE
T-10A Line mount Cross port with shuttle			Mar-04-24	1.053	C 1
					THIRD ANGLE