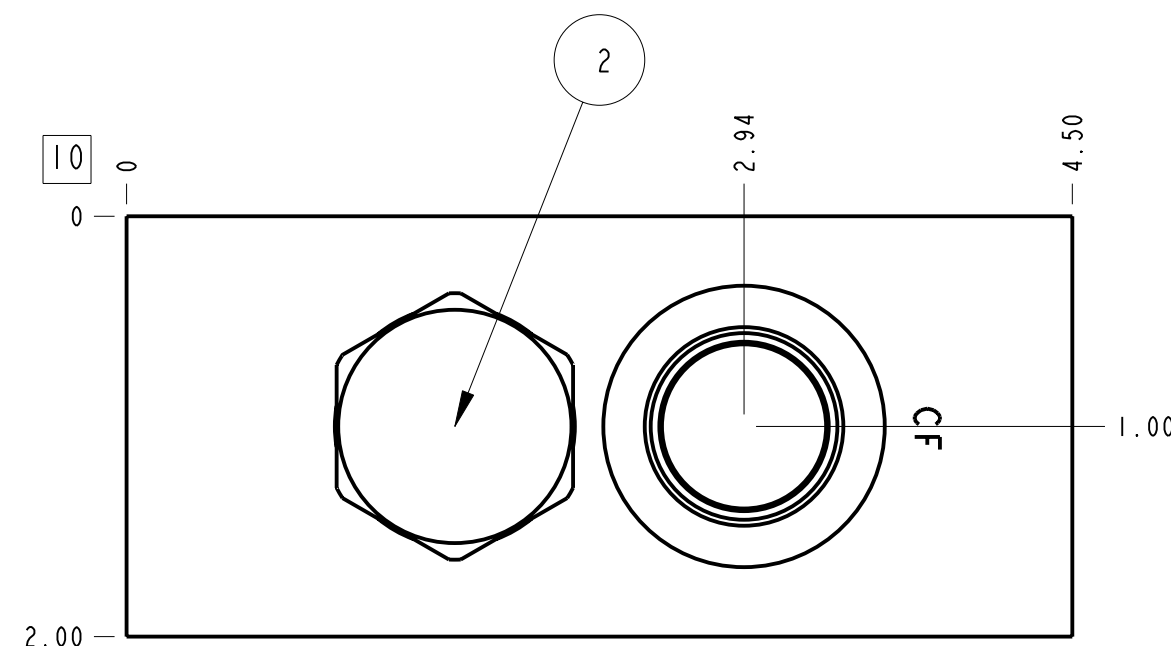
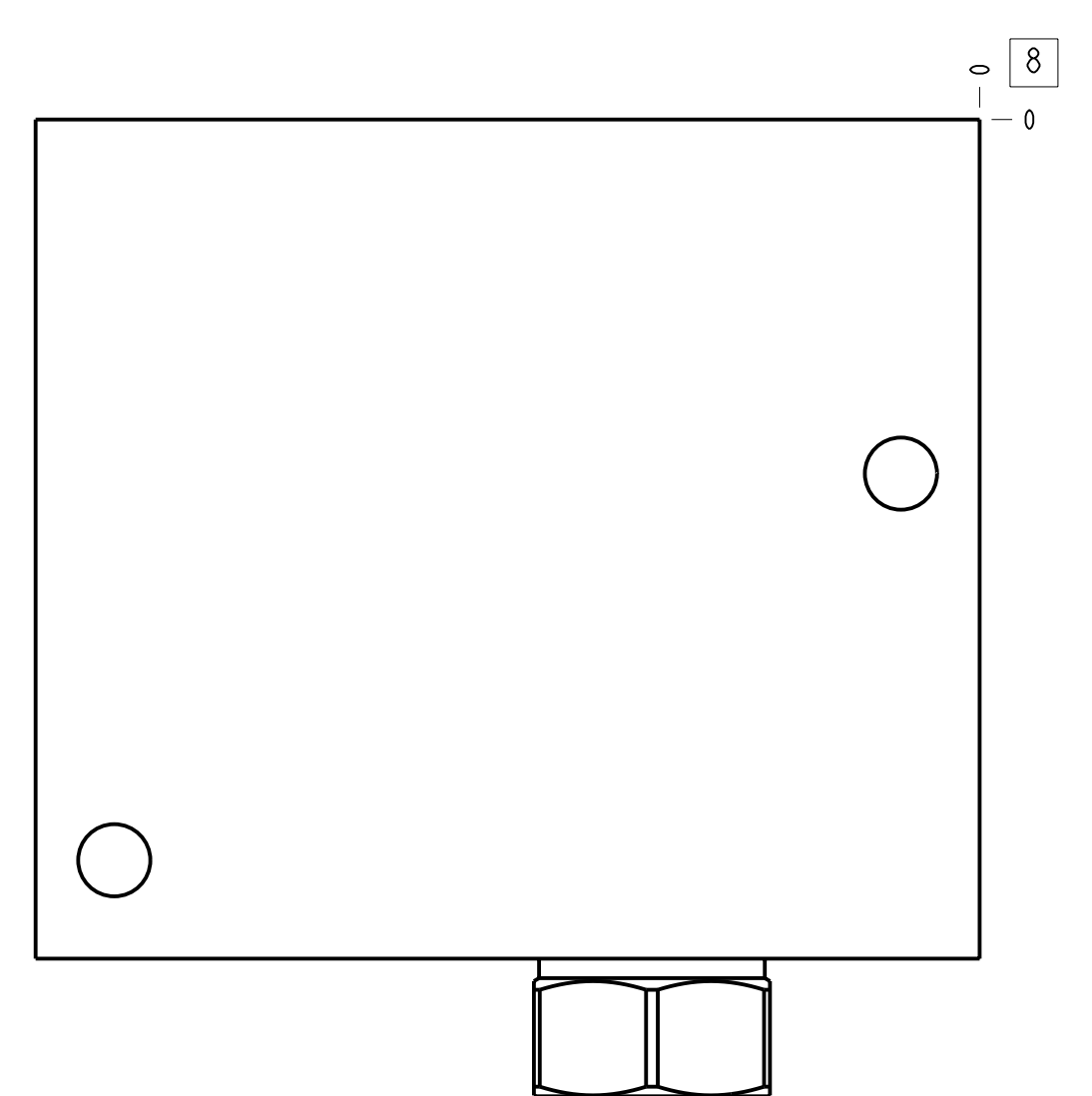
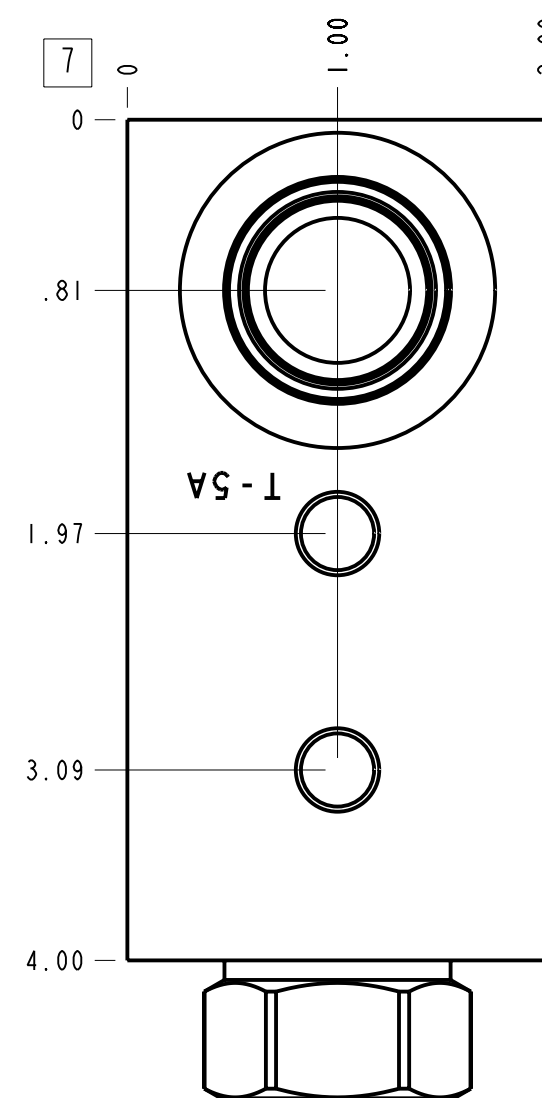
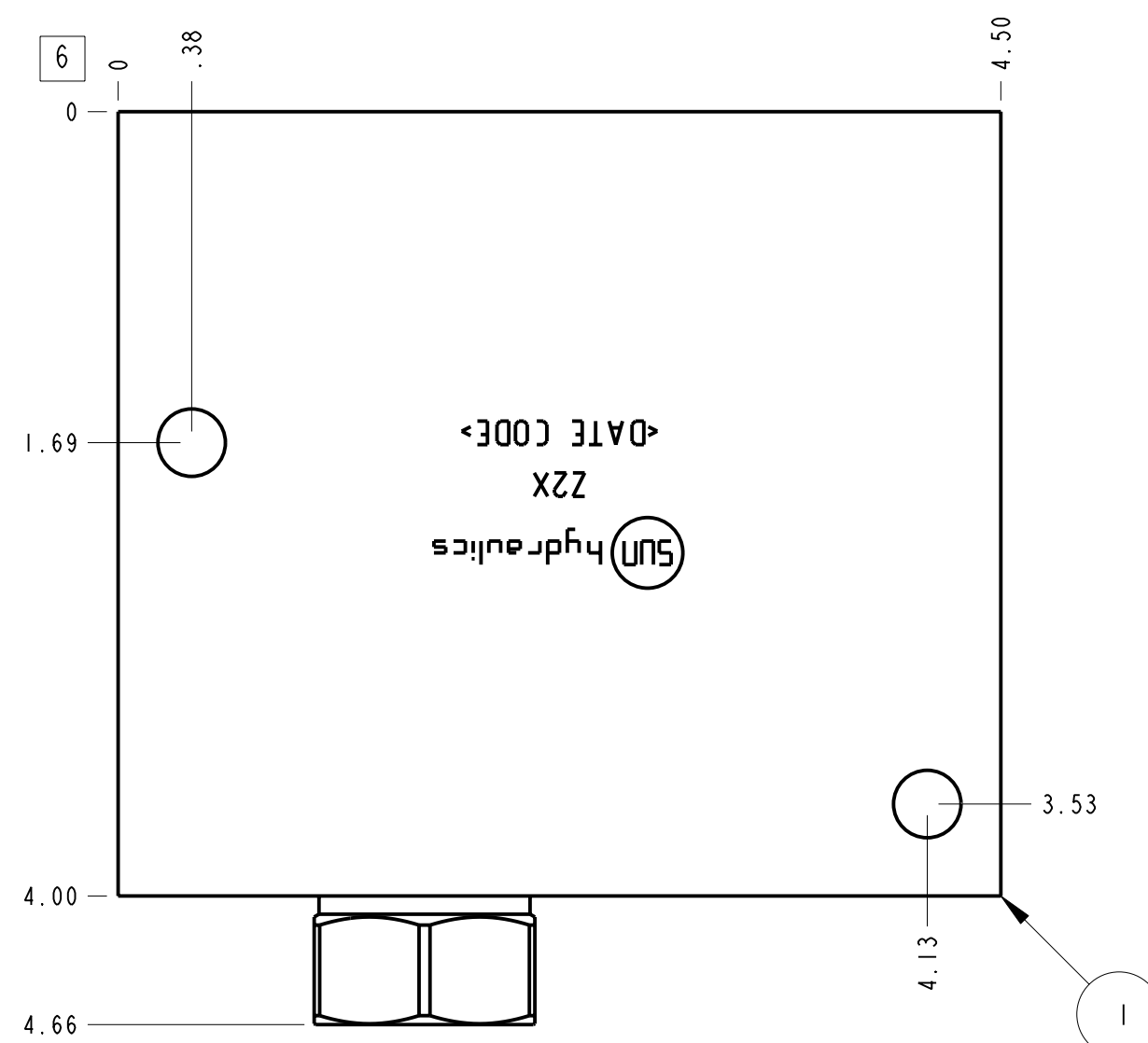
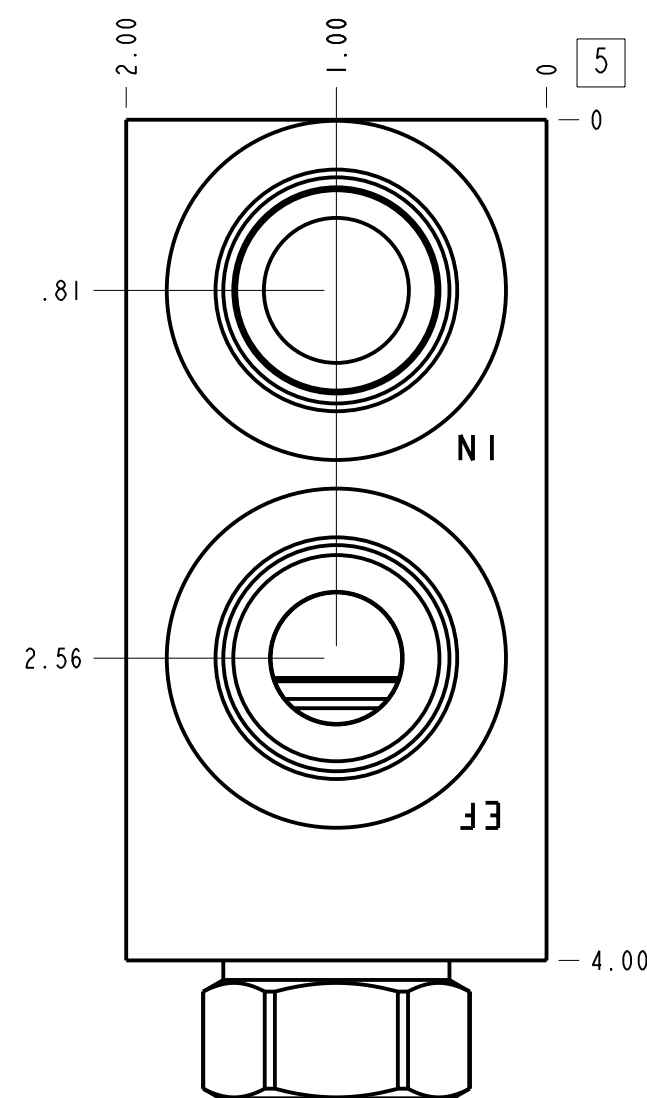
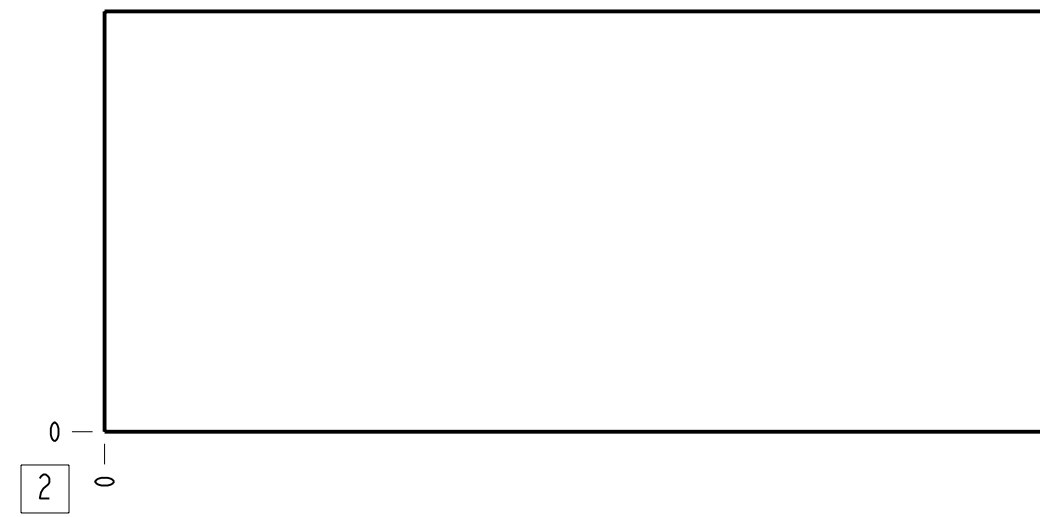


Technical Data	U.S. Units	Metric Units
Cavity	T-5A	
Body Features	With bypass compensator	
Body Type	Line mount	
Interface	None	
Open Cavity Quantity	1	
Weight	3.189 lb.	1,446 kg.
Mounting Hole Diameter	.34 in.	8.6 mm
Mounting Hole Thread	.375-16 UNC - 2B in.	
Mounting Hole Depth	.62 in.	15,7 mm
Mounting Hole Quantity	2	
Includes integral cartridge(s)	Yes (see Included Components)	



Notes

1. This manifold contains provisions for both threaded and thru-hole mounting, quantity two of each. See Technical Data table above for sizes.
2. Important: Carefully consider the maximum system pressure. The pressure rating of the manifold is dependent on the manifold material, with the port type/size a secondary consideration. Manifolds constructed of aluminum are not rated for pressures higher than 3000 psi (210 bar), regardless of the port type/size specified.
3. This drawing is for reference only. It is generated by an automated process and does not fall under Sun's document control process.

Port Headings		
Product	Port	Size
Z2X	Ports IN & EF	SAE 12
Z2X	Port CF	SAE 10

2	LRFC-XHN			MODULATING ELEMENT VALVE	1
1	152-383-004		6061-T6 ALUMINUM	BODY	1
ITEM	PART NO.	SETTING	MATERIAL	PART NAME	QTY

MODEL: Z2X

ALL DIMENSIONS IN INCH VIEWS ARE THIRD ANGLE

DESCRIPTION: T-5A Line mount With bypass compensator

DATE: Sep-07-23

SCALE: 1.095

DWG SIZE: C

SHEET: 1

FIRST ANGLE

THIRD ANGLE