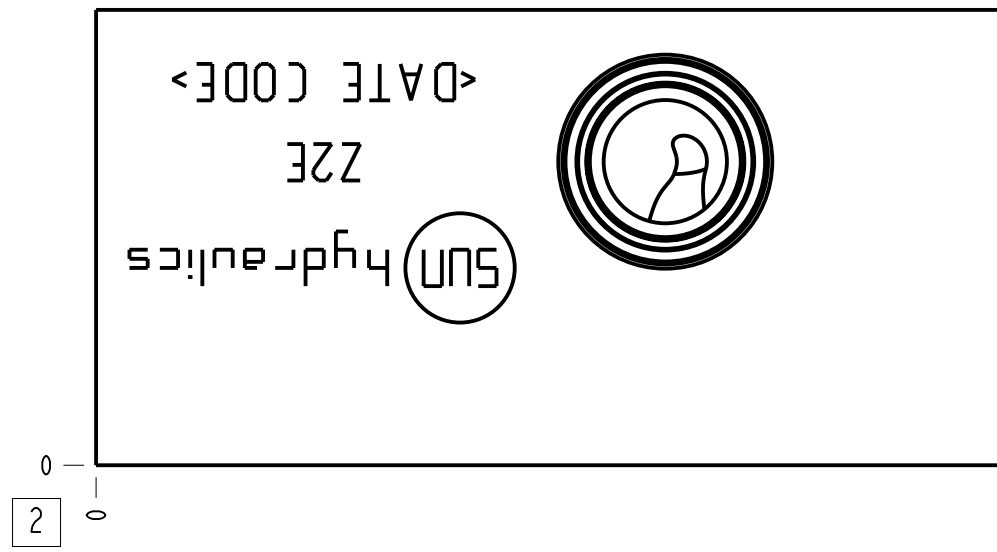
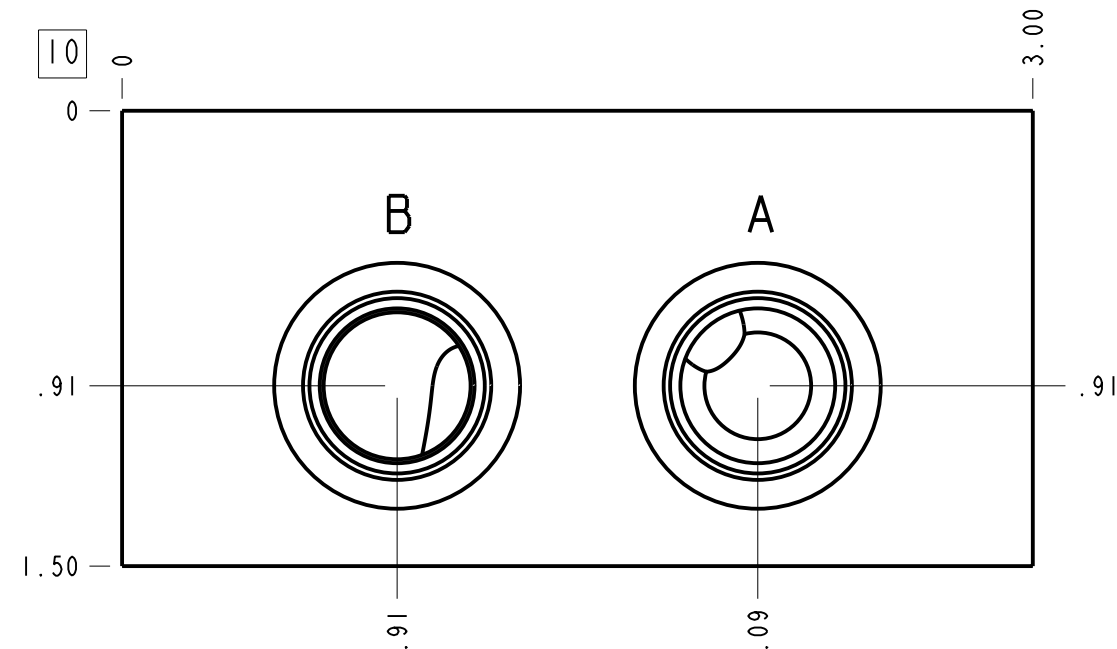
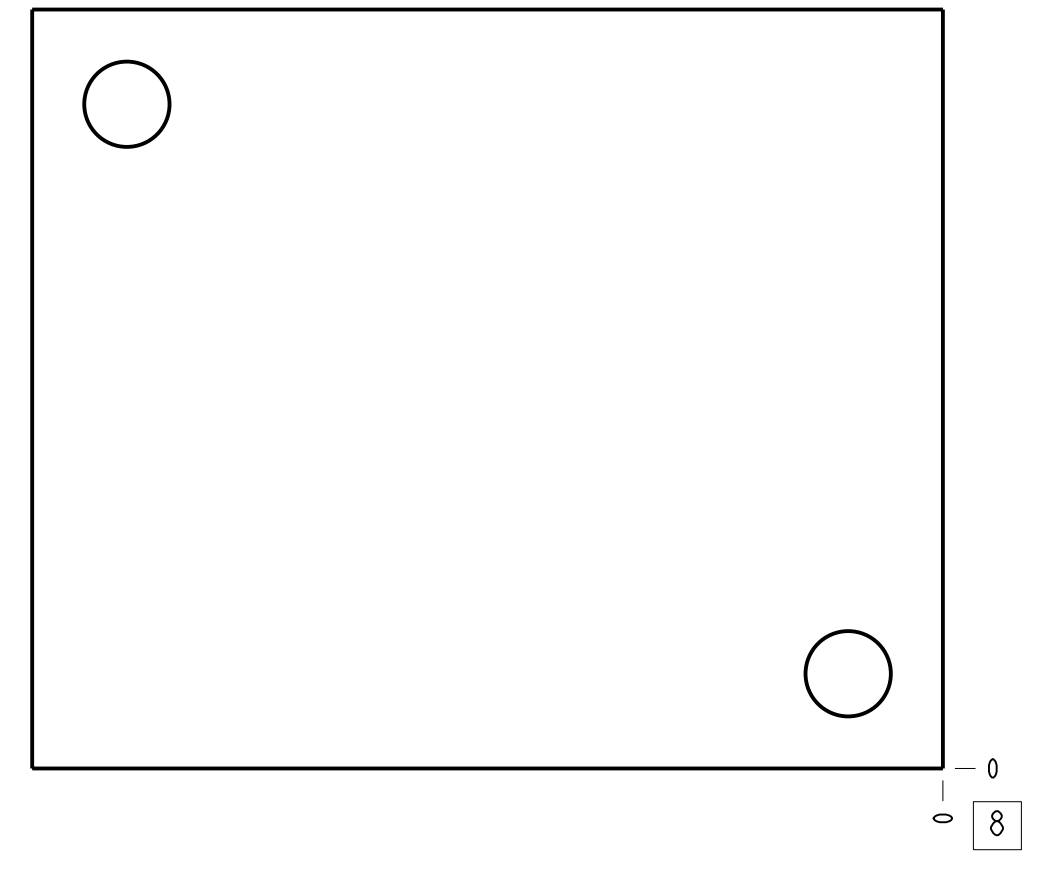
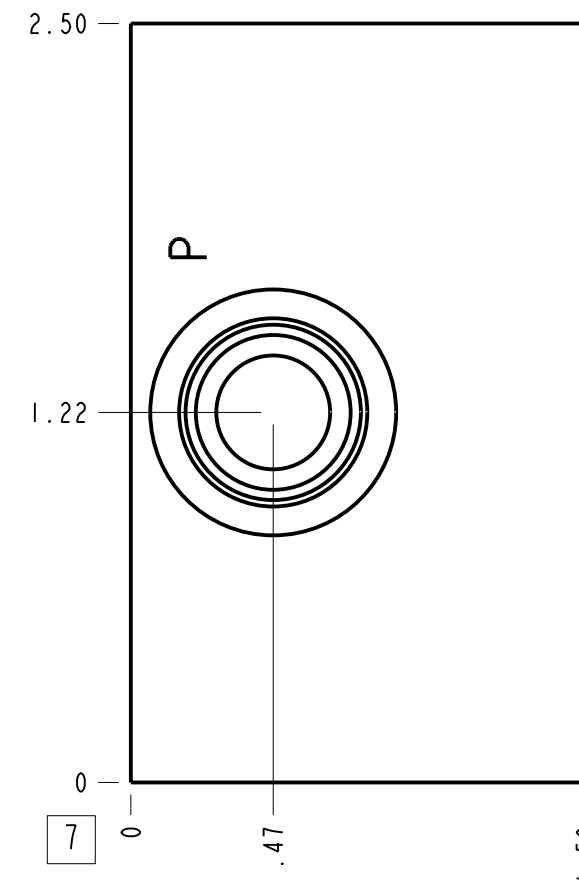
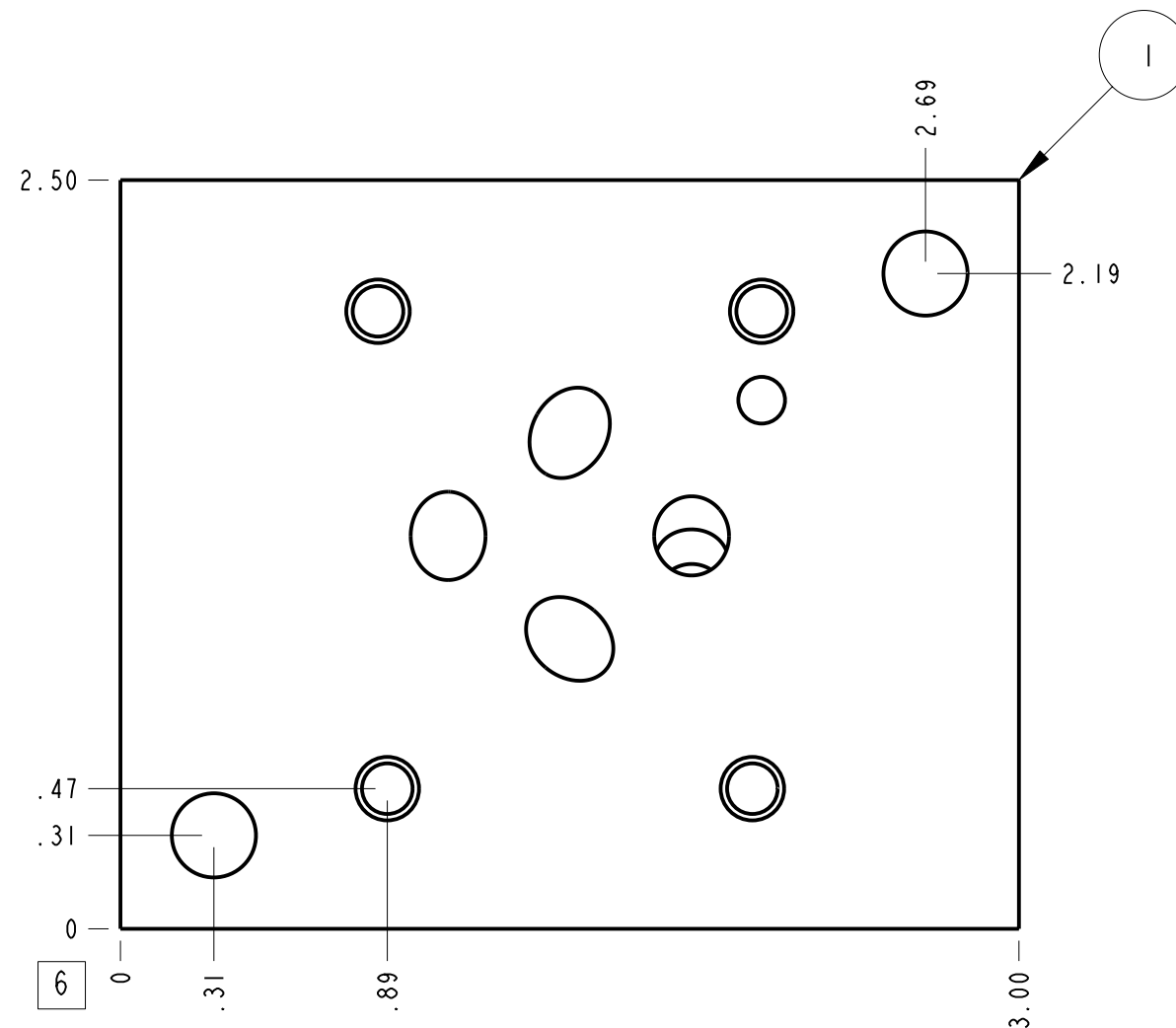
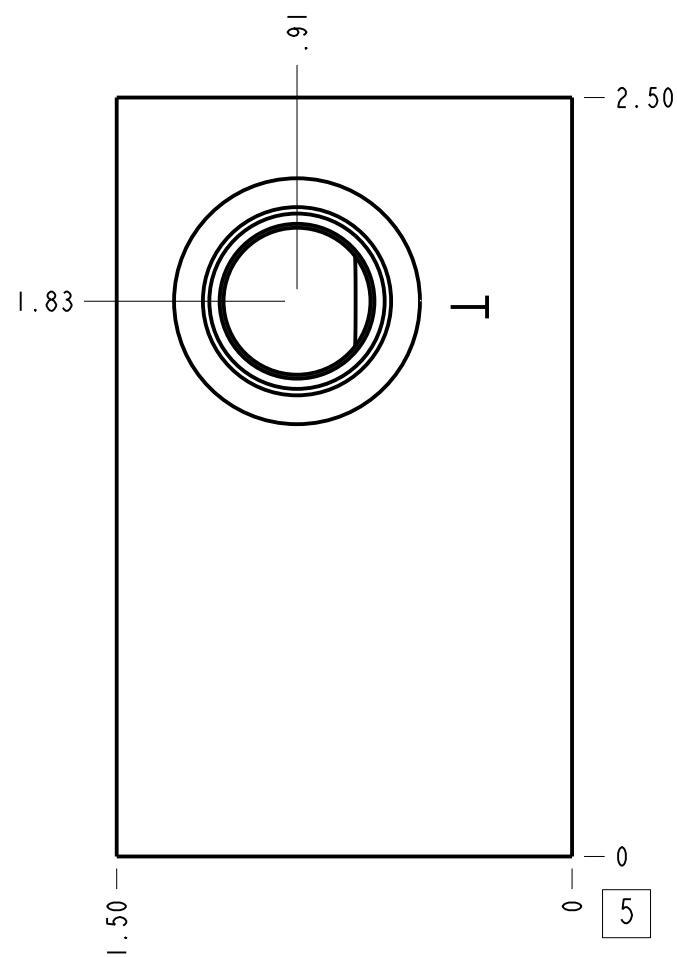


Relief P to T



Technical Data	U.S. Units	Metric Units
Cavity	T-162A	
Body Features	P to T, side ports	
Body Type	Subplate	
Interface	ISO 03	
Open Cavity Quantity	1	
Weight	0.931 lb.	0.422 kg.
Mounting Hole Diameter	.28 in.	7,1 mm
Mounting Hole Thread	10-24 UNC - 2B in.	
Mounting Hole Depth	.38 in.	9,7 mm



Notes

- Important: Carefully consider the maximum system pressure. The pressure rating of the manifold is dependent on the manifold material, with the port type/size a secondary consideration. Manifolds constructed of aluminum are not rated for pressures higher than 3000 psi (210 bar), regardless of the port type/size specified.
- This drawing is for reference only. It is generated by an automated process and does not fall under Sun's document control process.

Port Headings		
Product	Port	Size
ZZE	All Ports	SAE 6

ITEM	153-791-002	6061-T6 ALUMINUM	BODY	1
MODEL	ZZE	ALL DIMENSIONS IN INCH VIEWS ARE THIRD ANGLE		QTY
DESCRIPTION	T-162A Subplate ISO 03 P to T, side ports	SCALE	DWG SIZE	SHEET
	Oct-01-24	1.581	C	1

