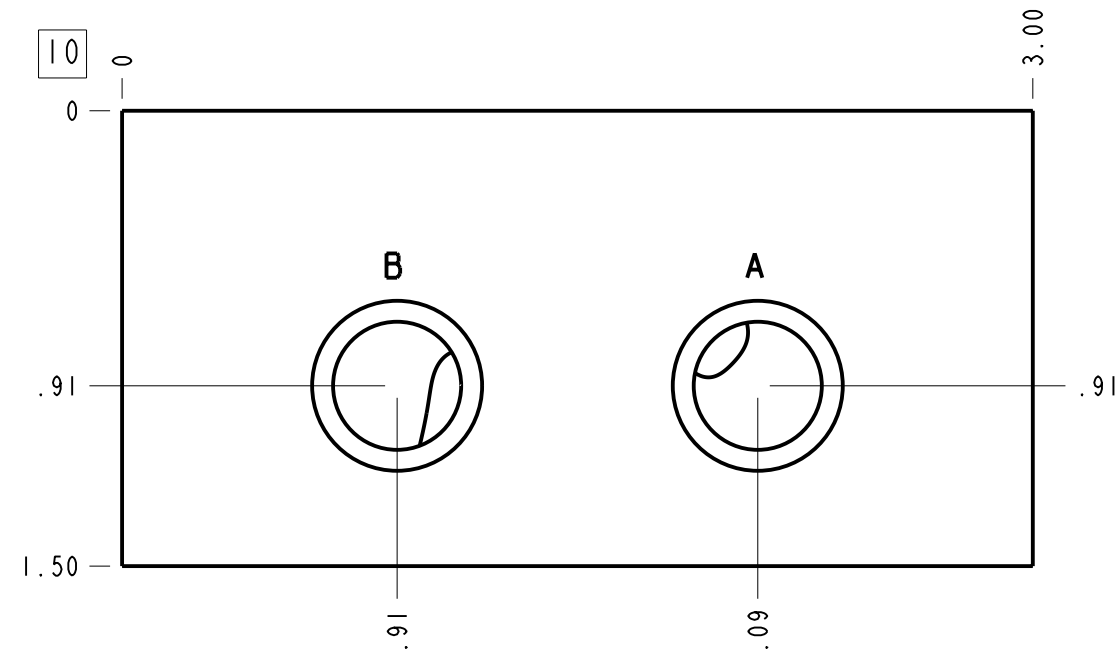
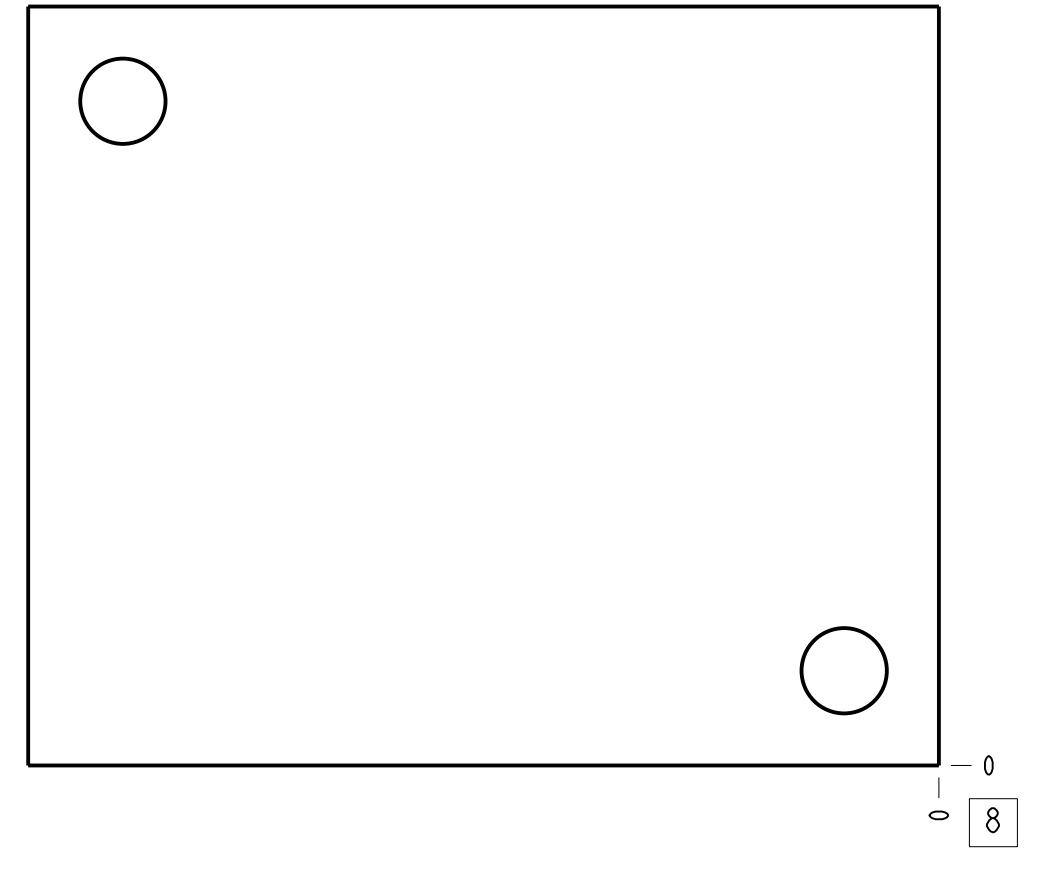
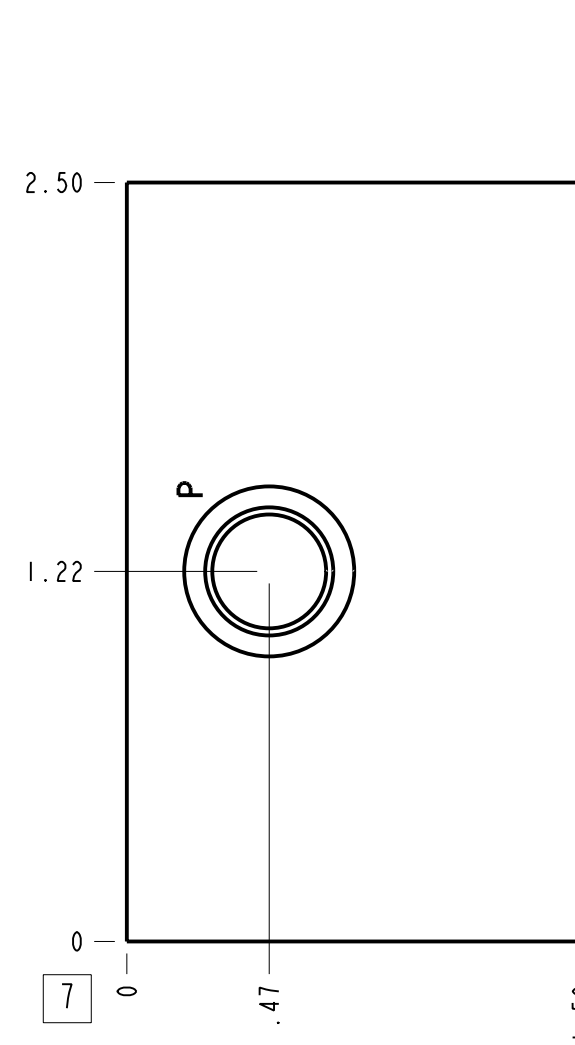
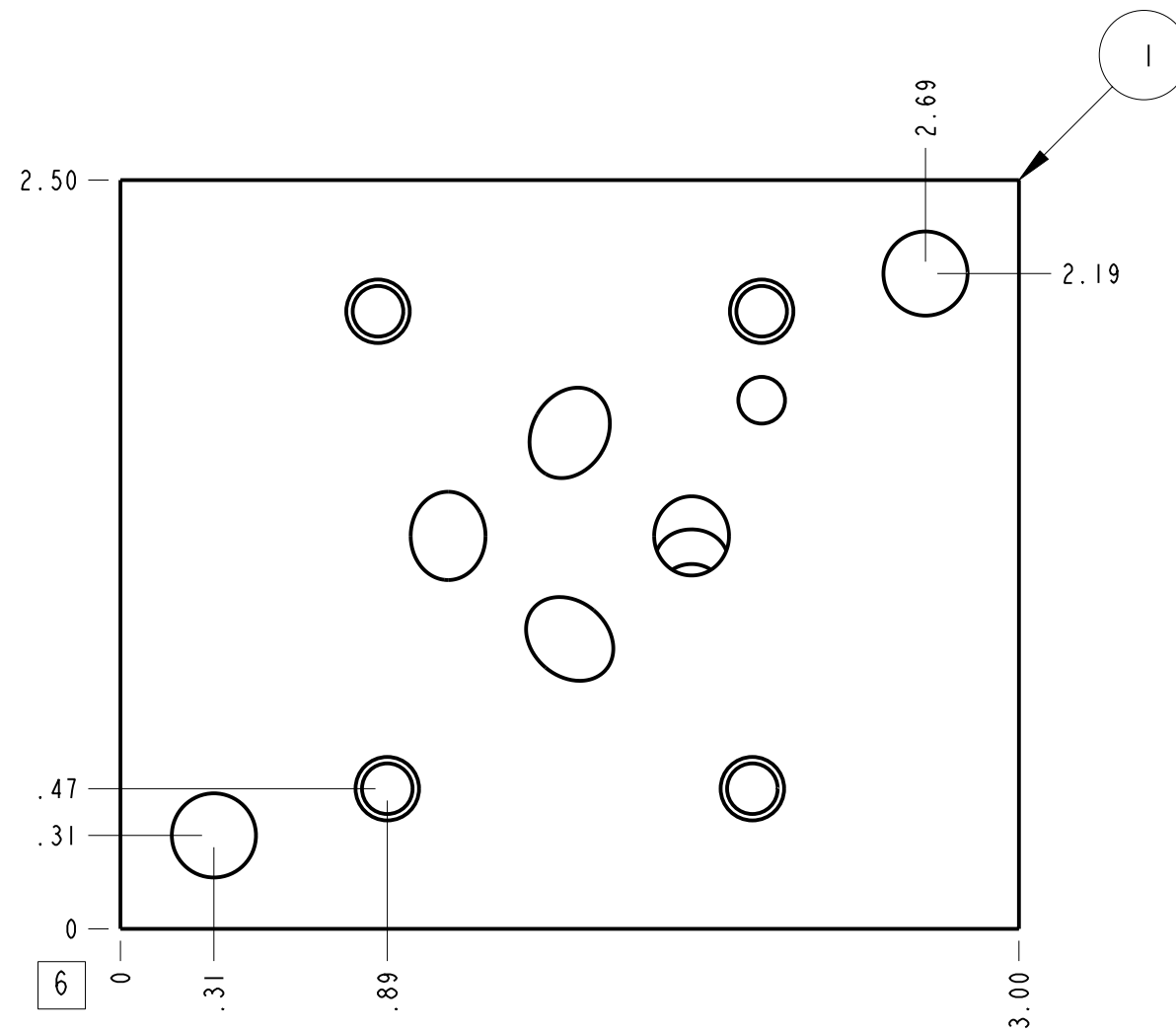
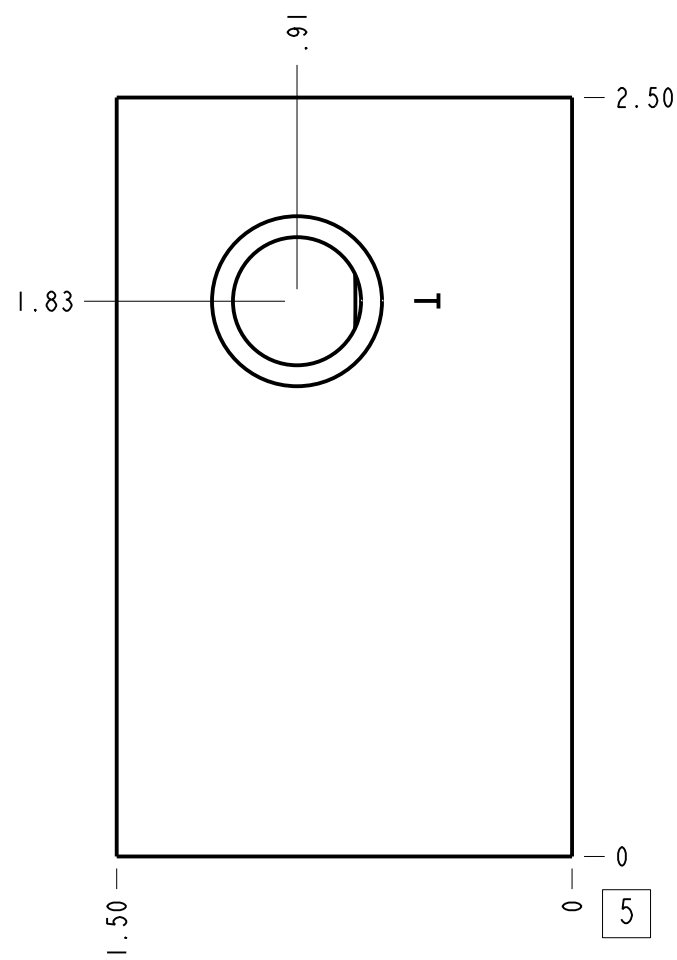
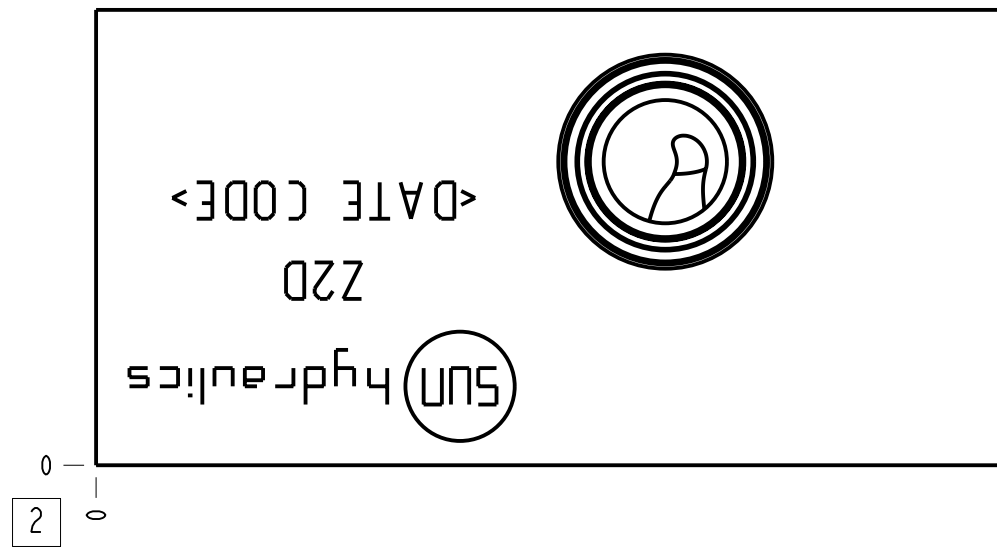


Relief P to T

Technical Data	U.S. Units	Metric Units
Cavity	T-162A	
Body Features	P to T, side ports	
Body Type	Subplate	
Interface	ISO 03	
Open Cavity Quantity	1	
Weight	0.956 lb.	0.434 kg.



- Notes**
- Important: Carefully consider the maximum system pressure. The pressure rating of the manifold is dependent on the manifold material, with the port type/size a secondary consideration. Manifolds constructed of aluminum are not rated for pressures higher than 3000 psi (210 bar), regardless of the port type/size specified.
 - This drawing is for reference only. It is generated by an automated process and does not fall under Sun's document control process.

Port Headings		
Product	Port	Size
Z2D	All Ports	1/4" NPTF

ITEM	153-791-001	6061-T6 ALUMINUM	BODY	1
MODEL	Z2D	ALL DIMENSIONS IN INCH VIEWS ARE THIRD ANGLE		QTY
DESCRIPTION	T-162A Subplate ISO 03 P to T, side ports	SCALE	DWG SIZE	SHEET
	Sep-15-23	1.581	C	1

