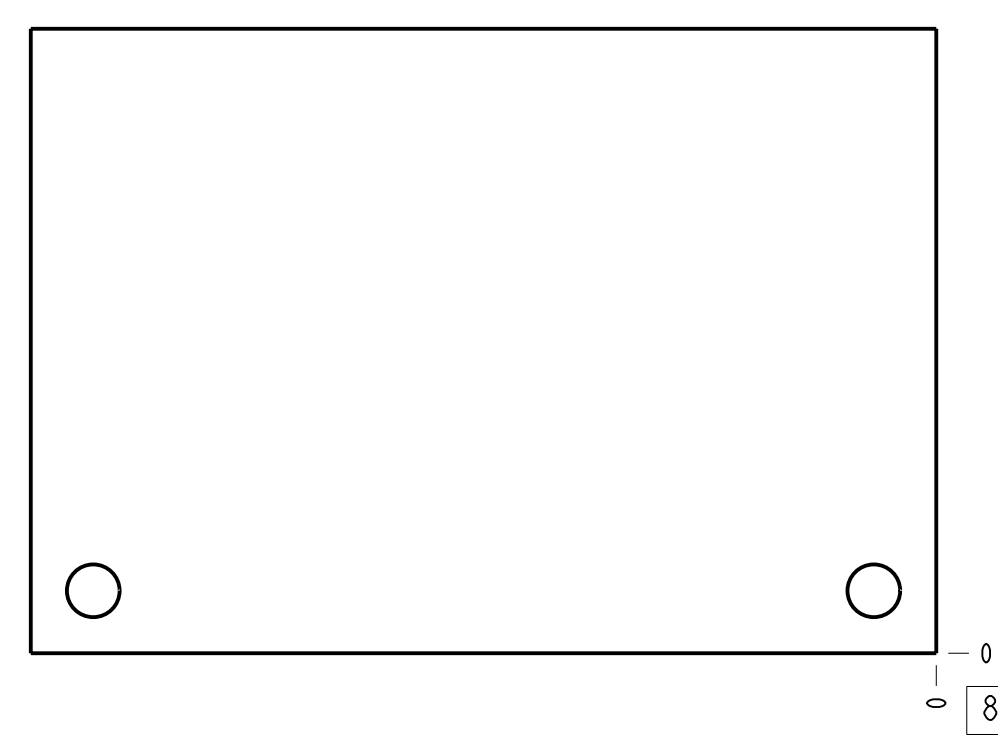
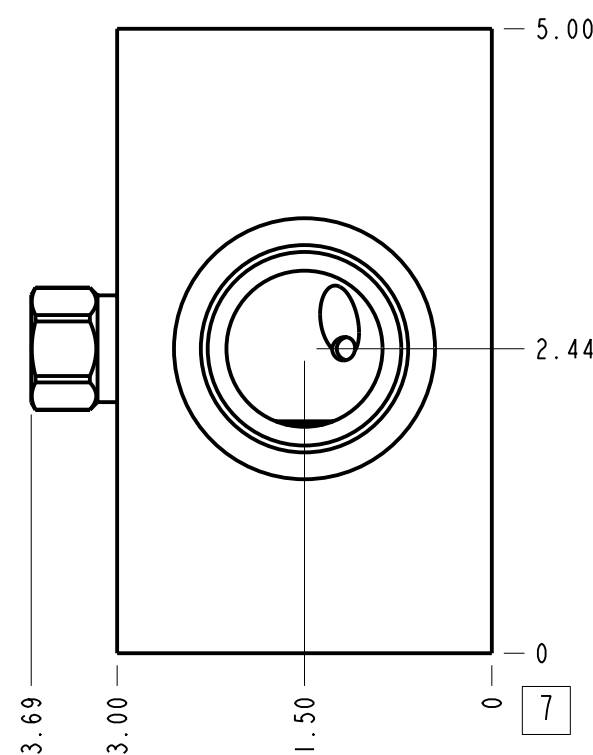
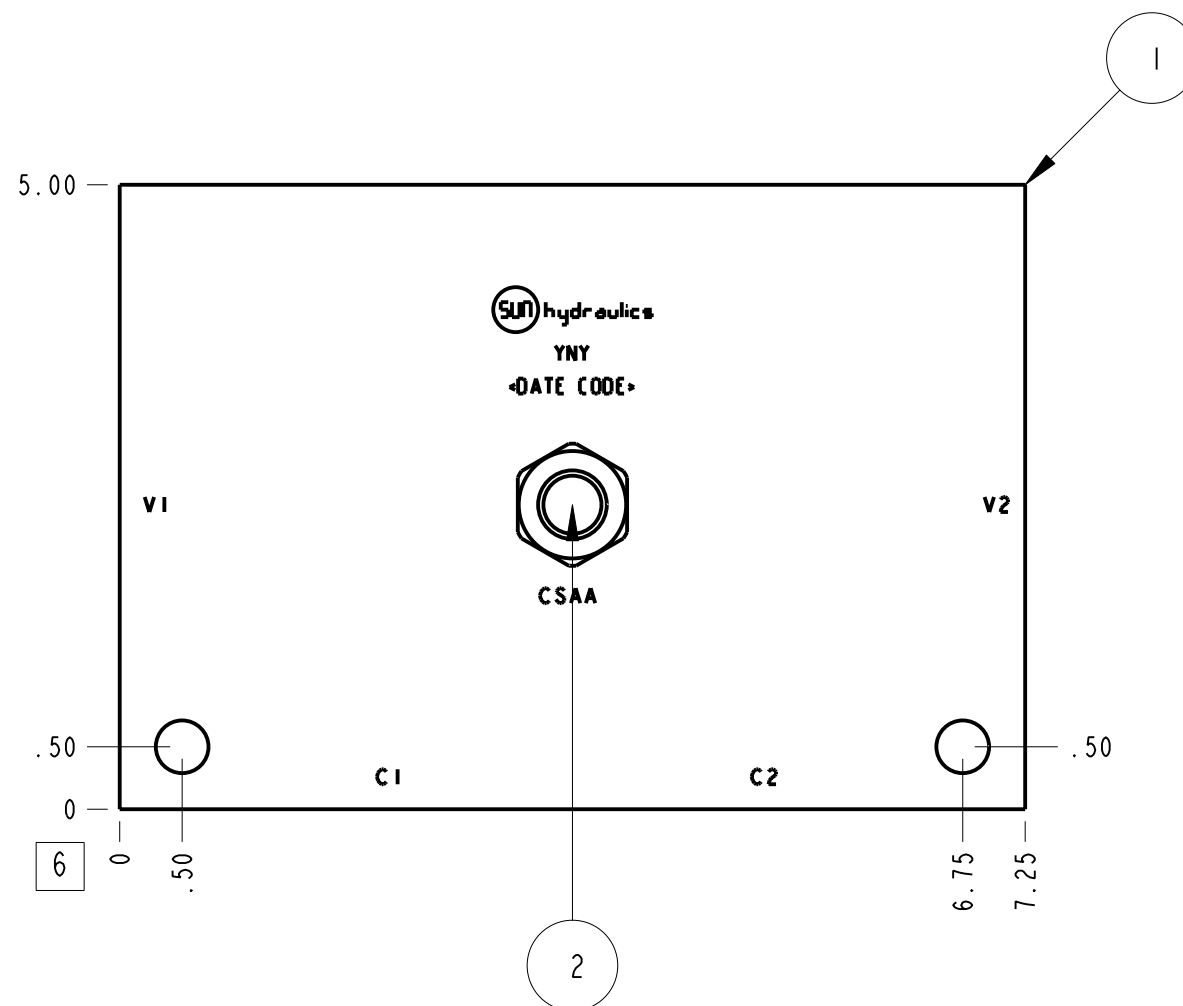
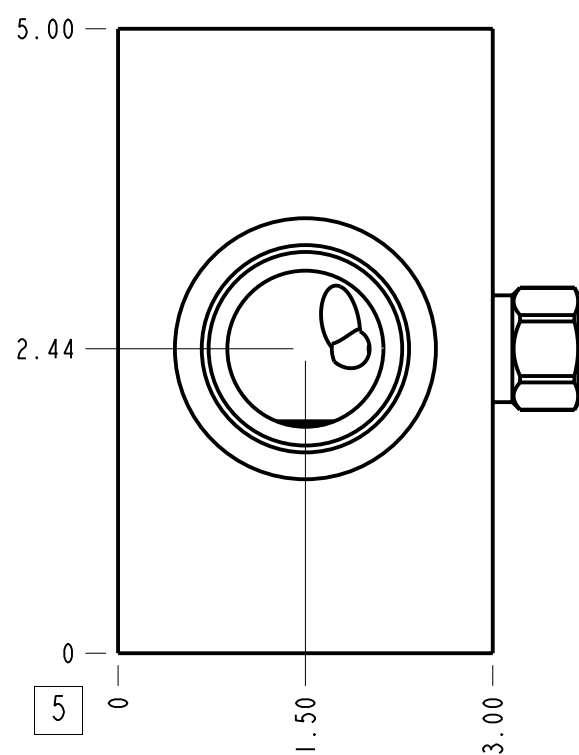
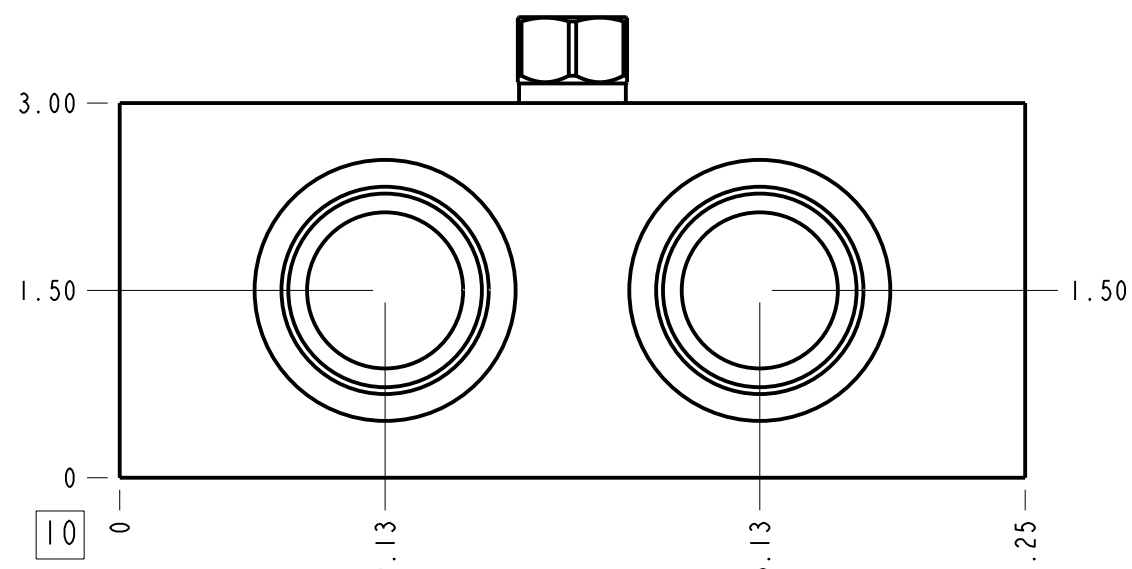


Technical Data	U.S. Units	Metric Units
Cavity	T-19A	
Body Features	Cross pilot with shuttle	
Body Type	Line mount	
Interface	None	
Open Cavity Quantity	2	
Weight	7.699 lb.	3,492 kg.
Mounting Hole Diameter	.41 in.	10,4 mm
Mounting Hole Depth	Through	
Mounting Hole Quantity	2	
Includes integral cartridge(s)	Yes (see Included Components)	



Notes

1. Important: Carefully consider the maximum system pressure. The pressure rating of the manifold is dependent on the manifold material, with the port type/size a secondary consideration. Manifolds constructed of aluminum are not rated for pressures higher than 3000 psi (210 bar), regardless of the port type/size specified.
2. This drawing is for reference only. It is generated by an automated process and does not fall under Sun's document control process.



Port Headings		
Product	Port	Size
YNY	Ports C1, C2, V1, V2	1 1/4" BSPP
YNY	Shuttle Port	1/4" BSPP

2	CSAABXN		SHUTTLE VALVE	1	
1	152-825-006	6061-T6 ALUMINUM	BODY	1	
ITEM	PART NO.	SETTING	MATERIAL	PART NAME	QTY
MODEL	YNY		ALL DIMENSIONS IN INCH VIEWS ARE THIRD ANGLE		FIRST ANGLE THIRD ANGLE
DESCRIPTION	T-19A Line mount Cross pilot with shuttle		DATE Nov-08-23	SCALE 0.650	DWG SIZE C
			SHEET 1		