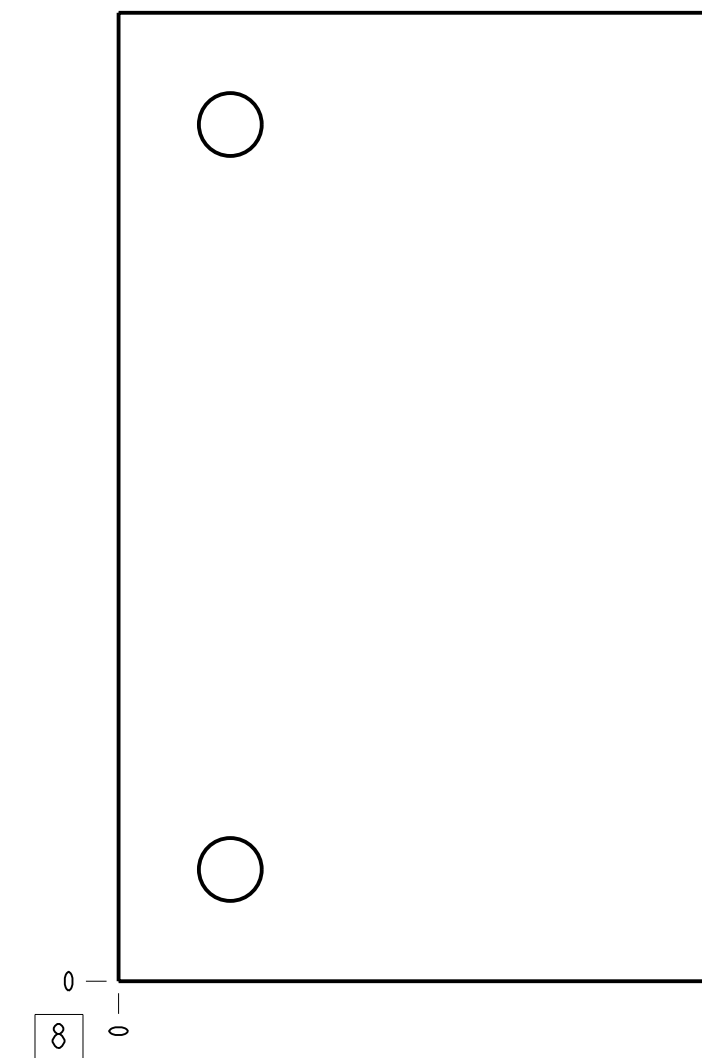
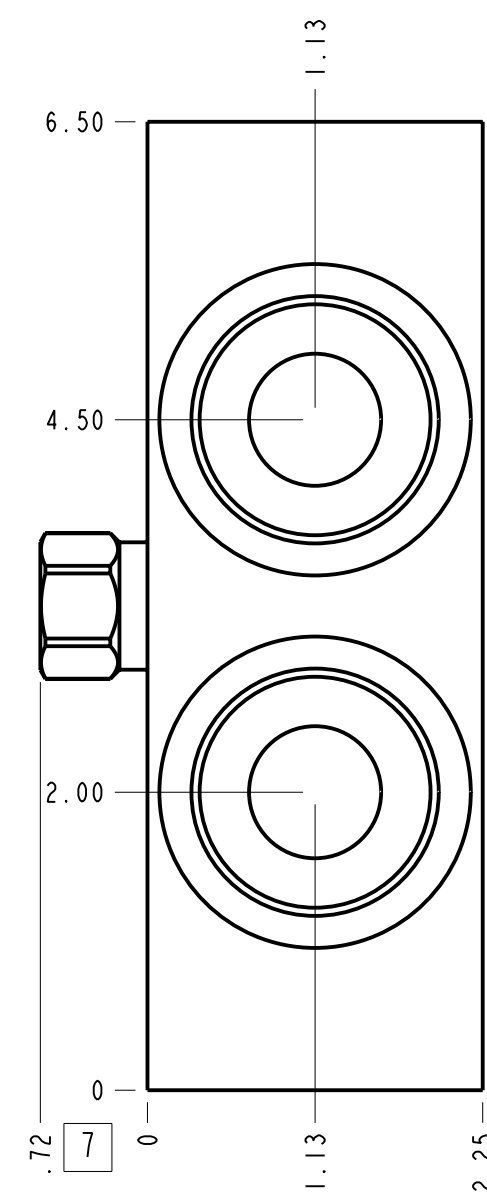


Technical Data	U.S. Units	Metric Units
Cavity		T-17A
Body Features		Cross pilot with shuttle
Body Type		Line mount
Interface		None
Open Cavity Quantity		2
Weight	4.029 lb.	1,827 kg.
Mounting Hole Diameter	.42 in.	10,7 mm
Mounting Hole Depth		Through
Mounting Hole Quantity		2
Includes integral cartridge(s)		Yes (see Included Components)



Notes

- Port S is the external connection at the top of the shuttle cartridge.
- Important: Carefully consider the maximum system pressure. The pressure rating of the manifold is dependent on the manifold material, with the port type/size a secondary consideration. Manifolds constructed of aluminum are not rated for pressures higher than 3000 psi (210 bar), regardless of the port type/size specified.
- This drawing is for reference only. It is generated by an automated process and does not fall under Sun's document control process.

Port Headings		
Product	Port	Size
YKY	Ports C1,C2,V1,V2	1 1/4" BSPP
YKY	Shuttle Port	1/4" BSPP

2	CSAABXN			SHUTTLE VALVE	1	
1	150-653-009		6061-T6 ALUMINUM	BODY	1	
ITEM	PART NO.	SETTING	MATERIAL	PART NAME	QTY	
	MODEL		YKY	ALL DIMENSIONS IN INCH VIEWS ARE THIRD ANGLE	FIRST ANGLE THIRD ANGLE	
DESCRIPTION			DATE	SCALE	DWG SIZE	SHEET
T-17A Line mount Cross pilot with shuttle			Aug-12-24	0.776	C	1

