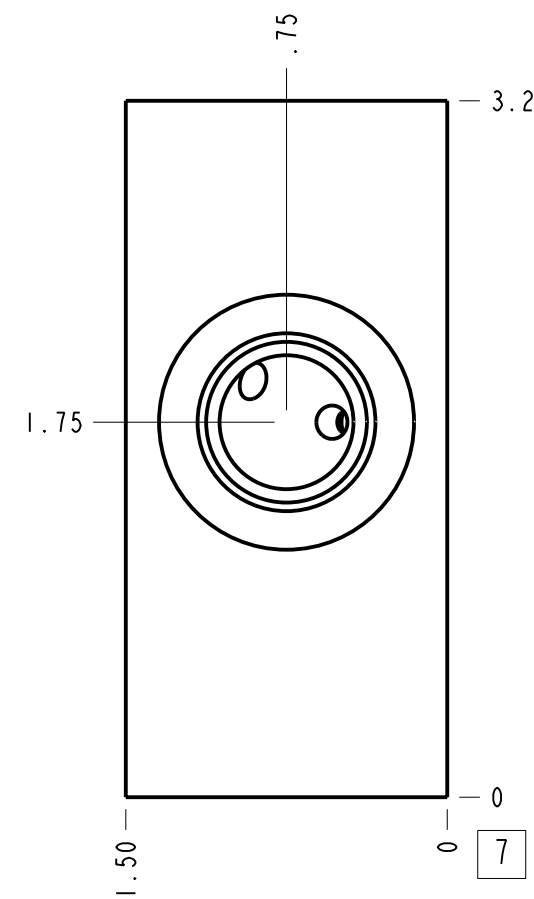
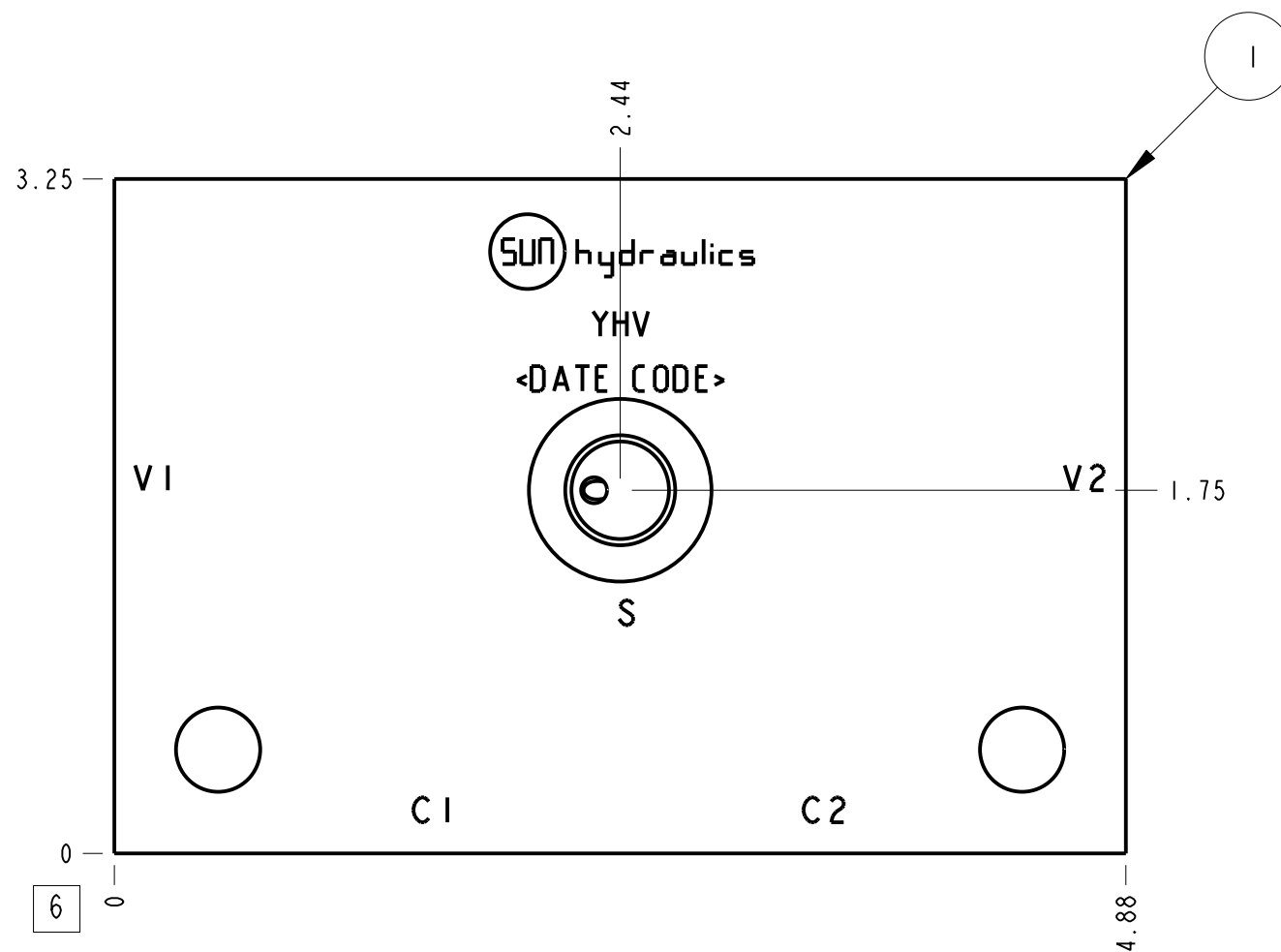
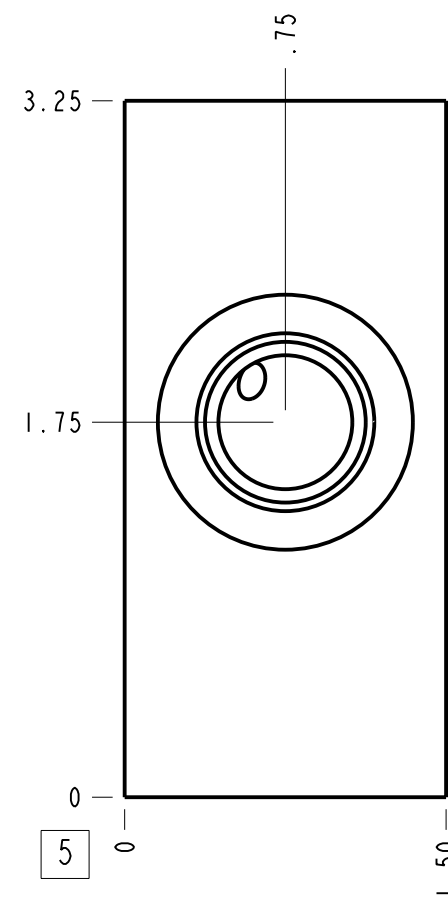
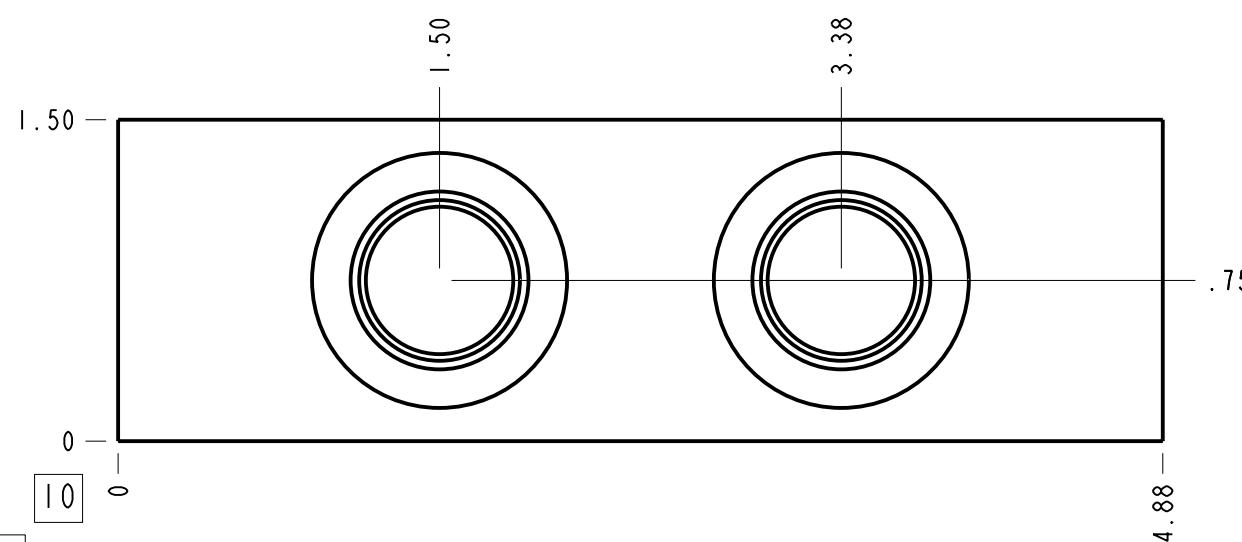


Technical Data	U.S. Units	Metric Units
Cavity	T-2A	
Body Features	Cross pilot with shuttle	
Body Type	Line mount	
Interface	None	
Open Cavity Quantity	2	
Weight	1.768 lb.	0,802 kg.
Mounting Hole Diameter	.41 in.	10,4 mm
Mounting Hole Depth	Through	
Mounting Hole Quantity	2	
Includes integral cartridge(s)	Yes (see Included Components)	



Notes

- Important: Carefully consider the maximum system pressure. The pressure rating of the manifold is dependent on the manifold material, with the port type/size a secondary consideration. Manifolds constructed of aluminum are not rated for pressures higher than 3000 psi (210 bar), regardless of the port type/size specified.
- Shuttle is accessible through the V2 port.
- This drawing is for reference only. It is generated by an automated process and does not fall under Sun's document control process.
- Items without balloons are shipped loose.



Port Headings		
Product	Port	Size
YHV	Ports C1, C2, V1, V2	1/2" BSPP
YHV	Port S	1/4" BSPP

2	CSZNXXN			MODEL	1
1	150-033-005		6061-T6 ALUMINUM	BODY	1
ITEM	PART NO.	SETTING	MATERIAL	PART NAME	QTY
	MODEL			YHV	
DESCRIPTION			ALL DIMENSIONS IN INCH VIEWS ARE THIRD ANGLE		
T-2A Line mount Cross pilot with shuttle			DATE	SCALE	DWG SIZE SHEET
			May-23-23	1.116	C 1
				FIRST ANGLE	THIRD ANGLE