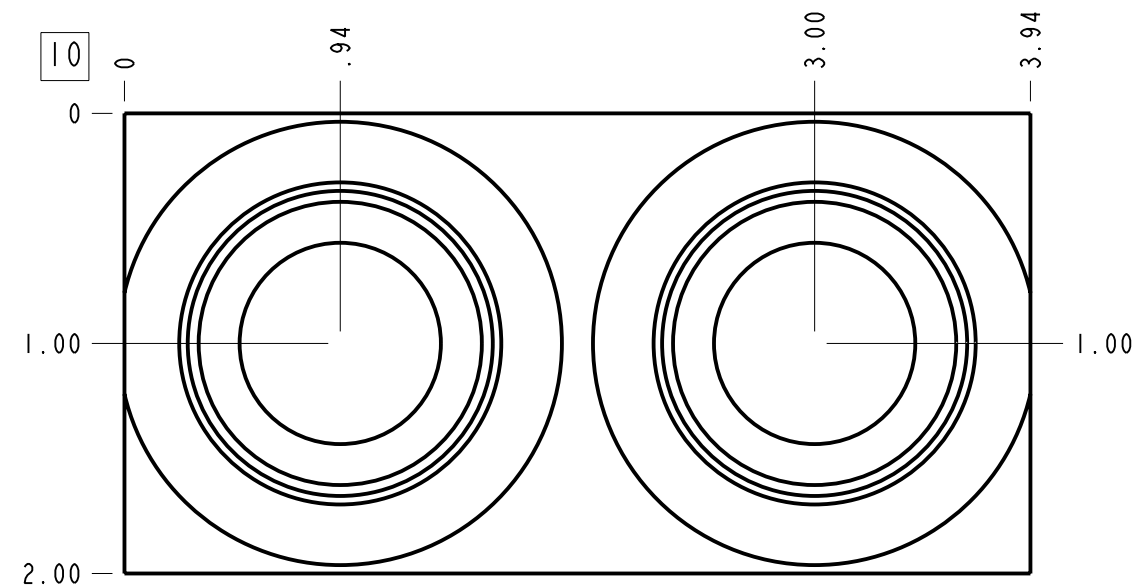
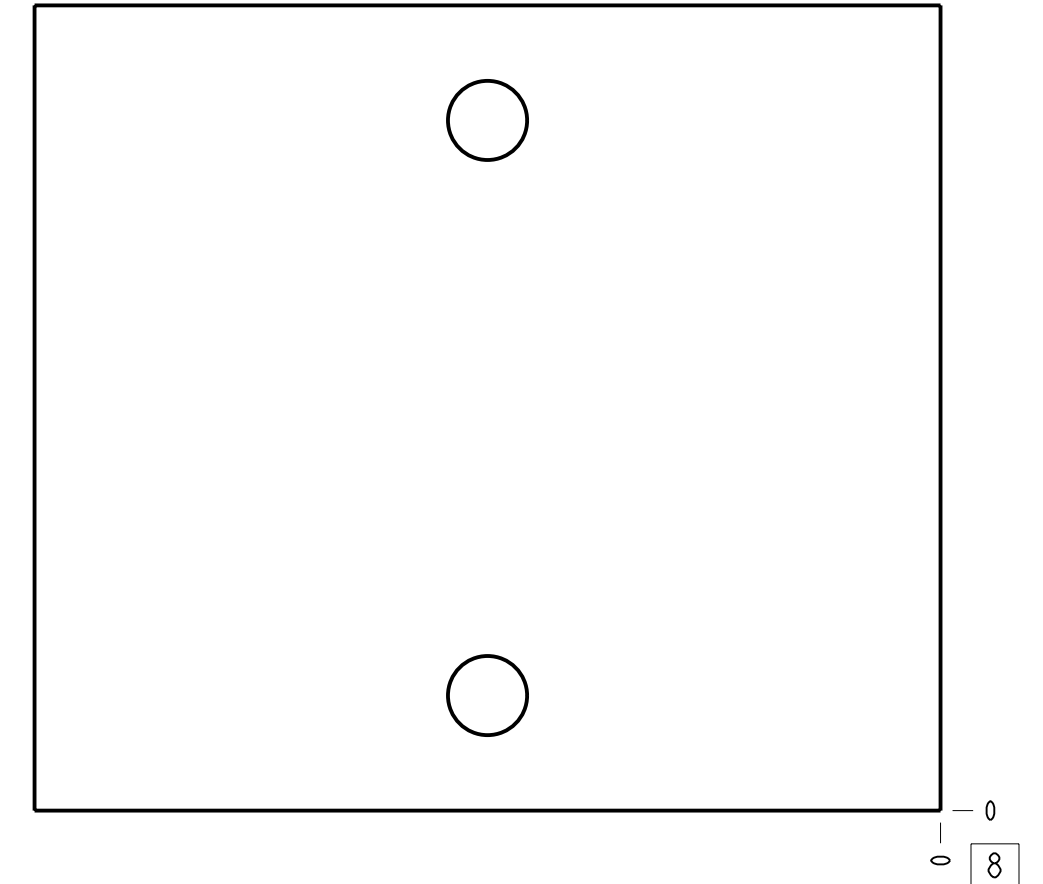
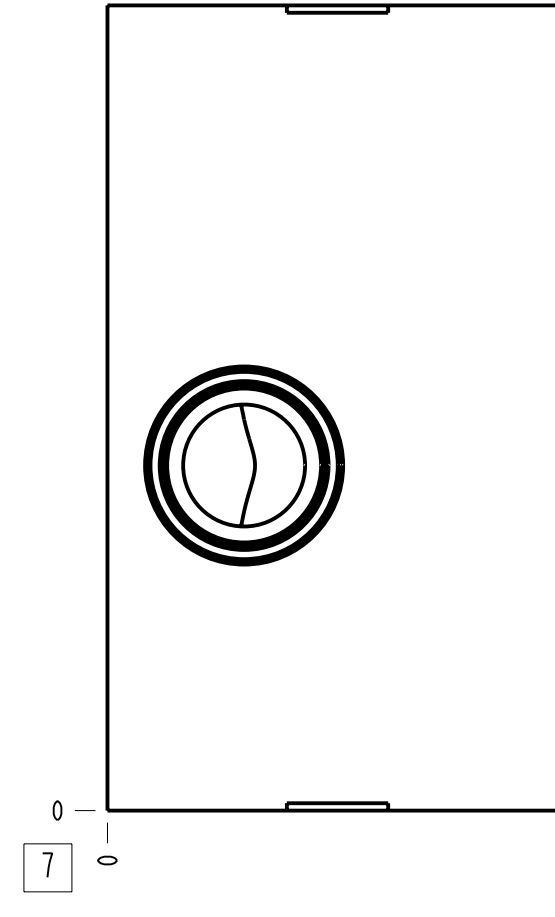
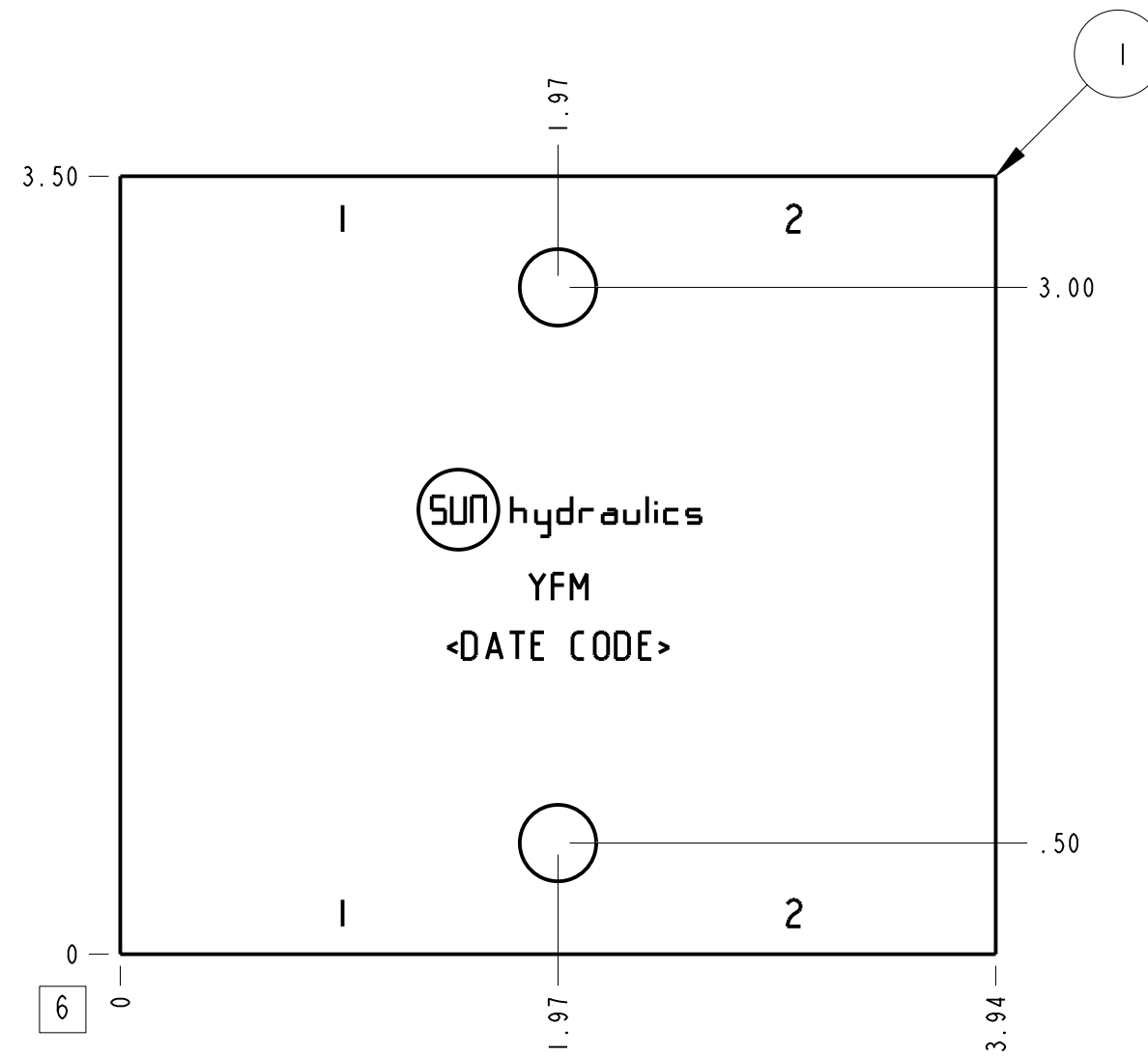
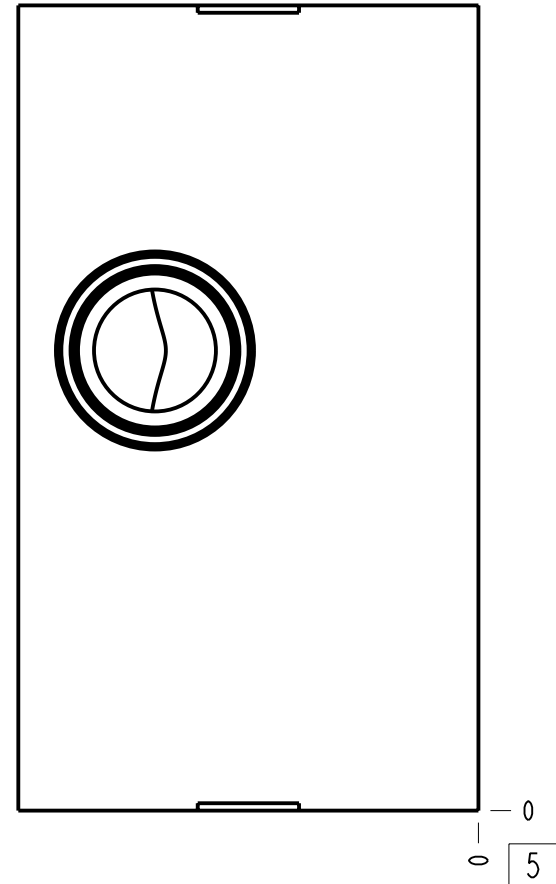


Technical Data	U.S. Units	Metric Units
Cavity		T-10A
Body Features		Cross port
Body Type		Line mount
Interface		None
Open Cavity Quantity		2
Weight	1.833 lb.	0.831 kg.
Mounting Hole Diameter	.34 in.	8.6 mm
Mounting Hole Depth		Through
Mounting Hole Quantity		2



Notes

- Important: Carefully consider the maximum system pressure. The pressure rating of the manifold is dependent on the manifold material, with the port type/size a secondary consideration. Manifolds constructed of aluminum are not rated for pressures higher than 3000 psi (210 bar), regardless of the port type/size specified.
- This drawing is for reference only. It is generated by an automated process and does not fall under Sun's document control process.

Port Headings		
Product	Port	Size
YFM	All Ports	SAE 16

1	151-799-004		6061-T6 ALUMINUM	BODY	1
ITEM	PART NO.	SETTING	MATERIAL	PART NAME	QTY
	MODEL		YFM	ALL DIMENSIONS IN INCH VIEWS ARE THIRD ANGLE	FIRST ANGLE THIRD ANGLE
DESCRIPTION	T-10A Line mount Cross port	DATE	SCALE	DWG SIZE	SHEET
		Dec-13-23	1.198	C	1

