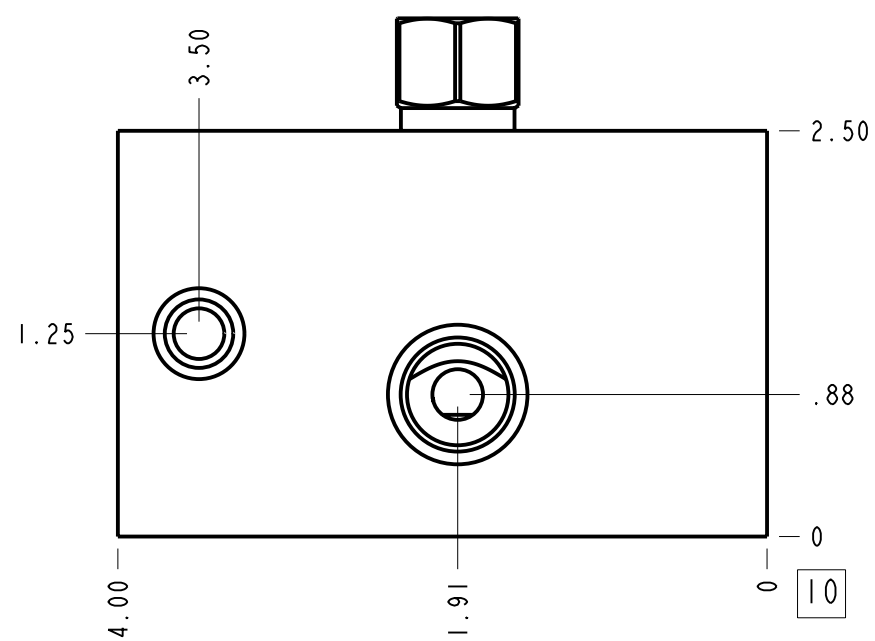
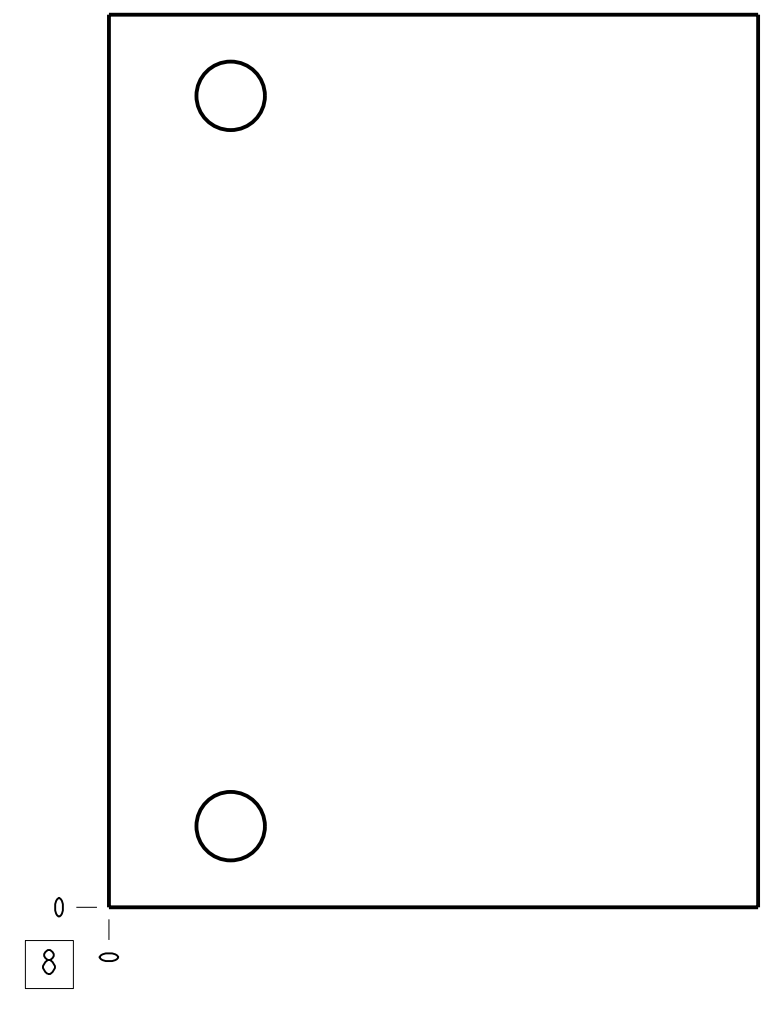
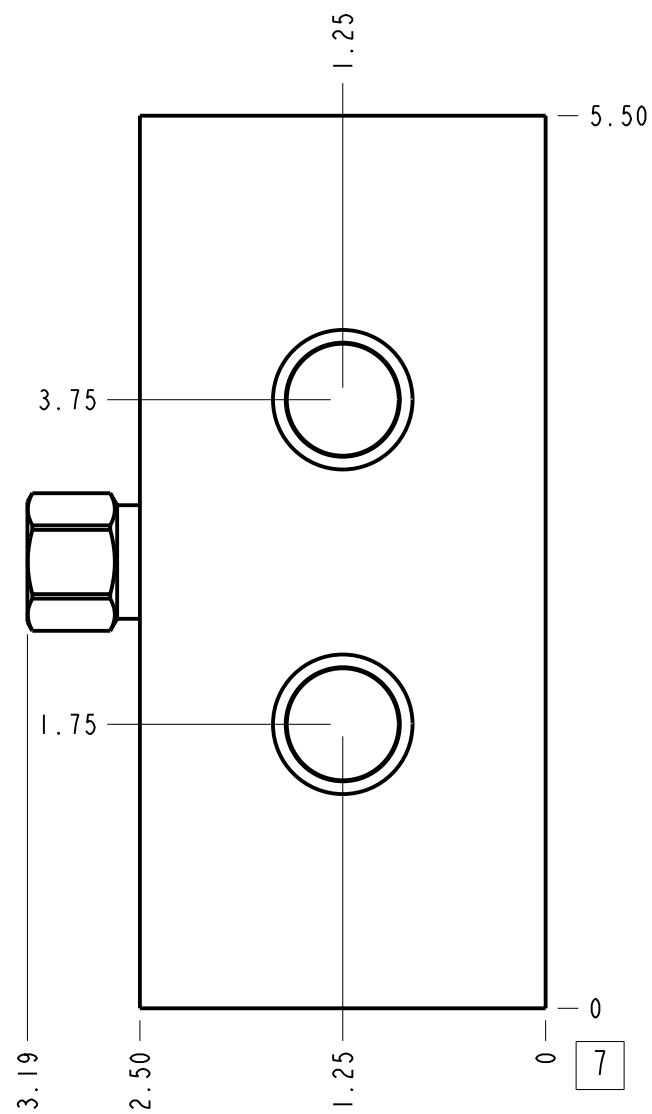
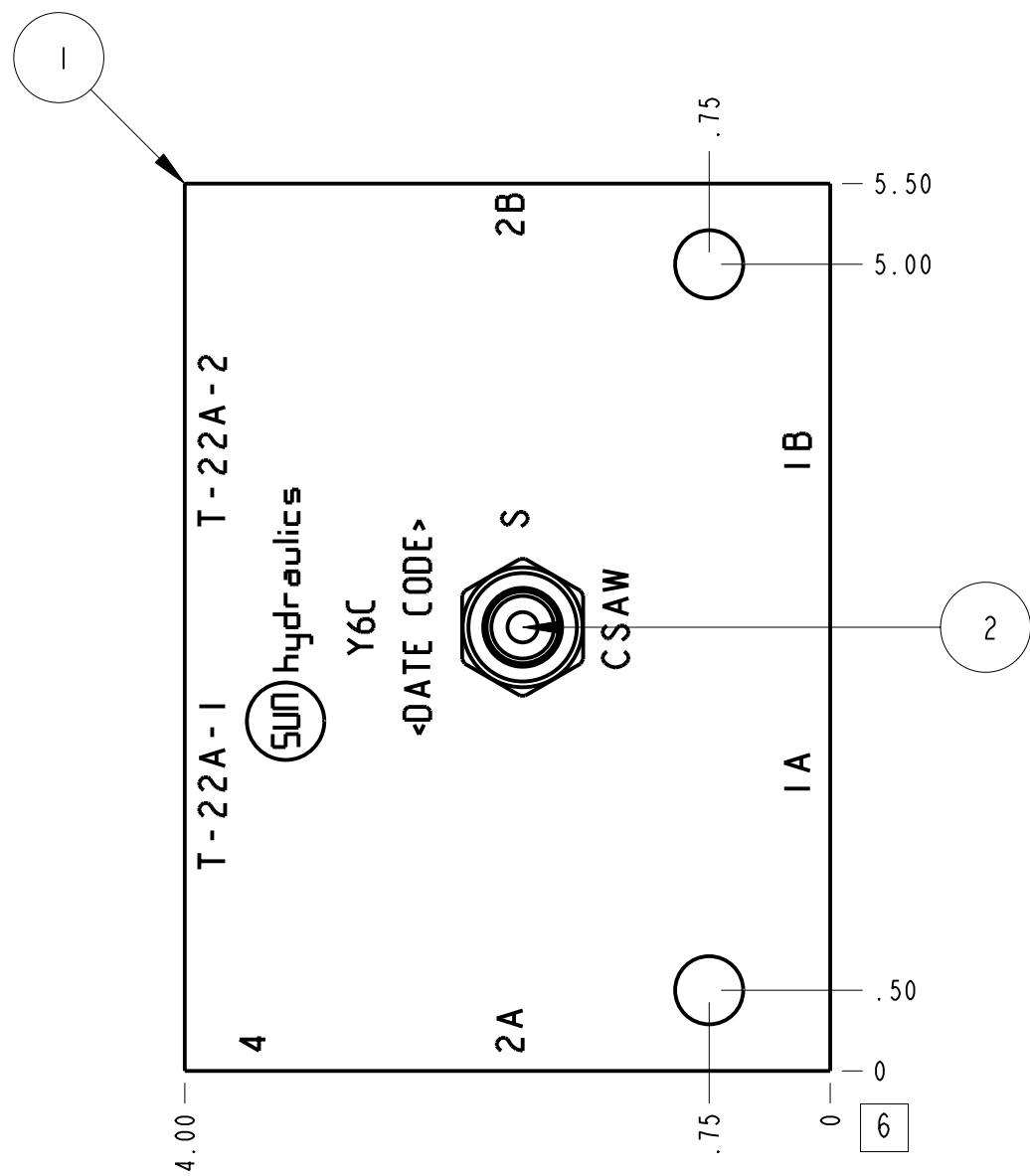


Technical Data	U.S. Units	Metric Units
Cavity	T-22A	
Body Features	Cross pilot with shuttle	
Body Type	Line mount	
Open Cavity Quantity	2	
Weight	4.544 lb.	2,061 kg.
Maximum Operating Pressure - 6061-T651 Aluminum	3000 psi	210 bar
Maximum Operating Pressure - 65-45-12 Ductile Iron	5000 psi	350 bar
Mounting Hole Diameter	.42 in.	10,7 mm
Mounting Hole Quantity	2	
Includes integral cartridge(s)	Yes (see Included Components)	



Notes

- Important: Carefully consider the maximum system pressure. The pressure rating of the manifold is dependent on the manifold material, with the port type/size a secondary consideration. Manifolds constructed of aluminum are not rated for pressures higher than 3000 psi (210 bar), regardless of the port type/size specified.
- This drawing is for reference only. It is generated by an automated process and does not fall under Sun's document control process.

Port Headings		
Product	Port	Size
Y6C	Ports 1A, 1B, 2A, 2B	1/2" NPTF
Y6C	Port 4	1/4" NPTF
Y6C	Port S	SAE 4

2	CSAWEXN			SHUTTLE VALVE	1
1	179-306-002		6061-T6 ALUMINUM	BODY	1
ITEM	PART NO.	SETTING	MATERIAL	PART NAME	QTY
	MODEL				
DESCRIPTION			ALL DIMENSIONS IN INCH VIEWS ARE THIRD ANGLE		
T-22A Line mount Cross pilot with shuttle			DATE	SCALE	DWG SIZE SHEET
			Sep-13-24	0.845	C 1
				FIRST ANGLE	THIRD ANGLE