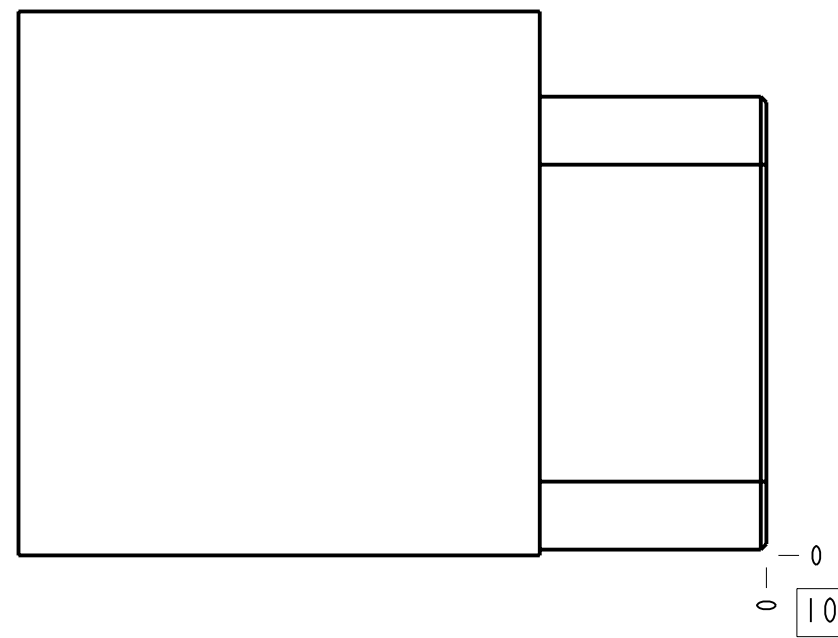
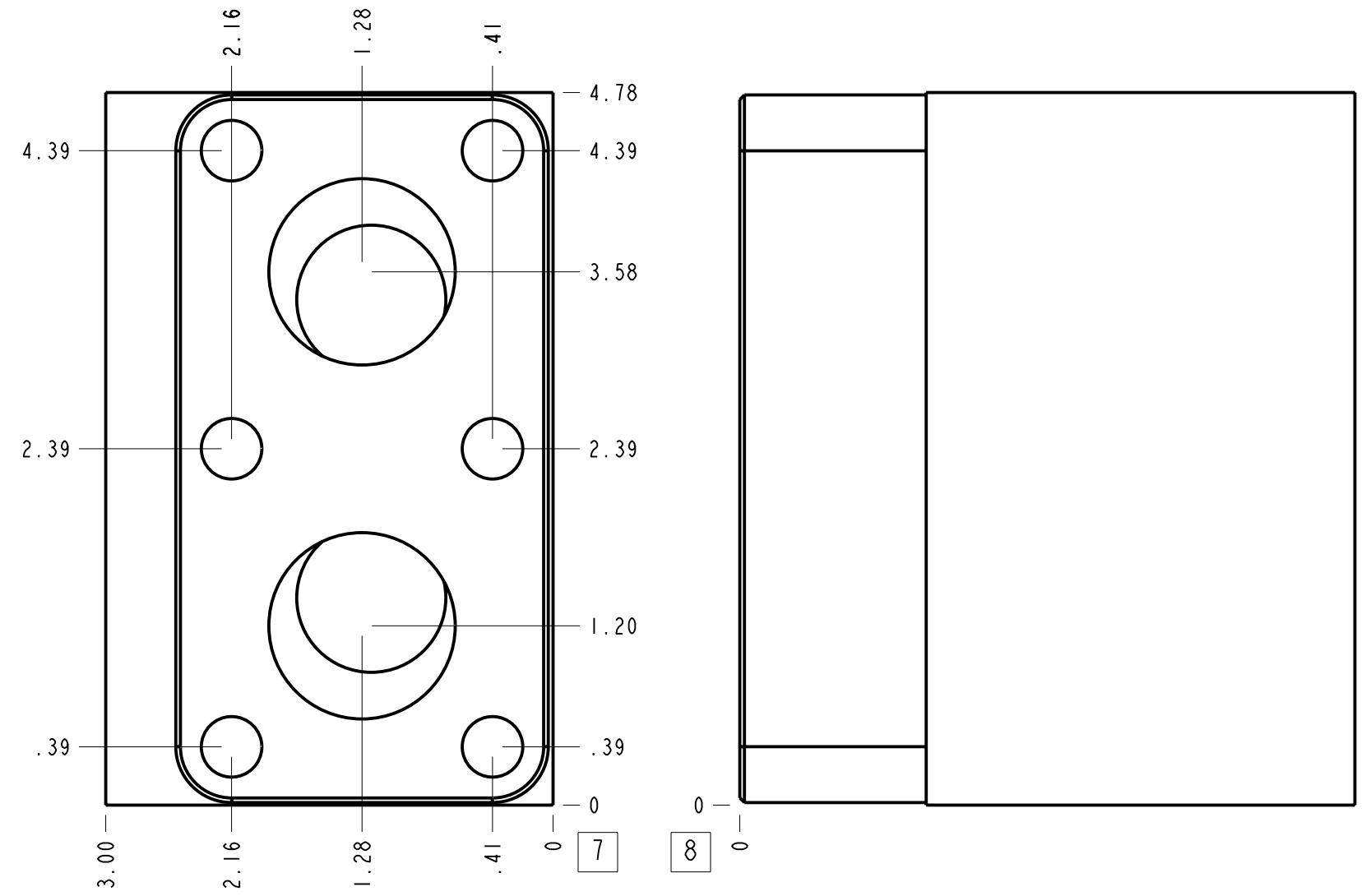
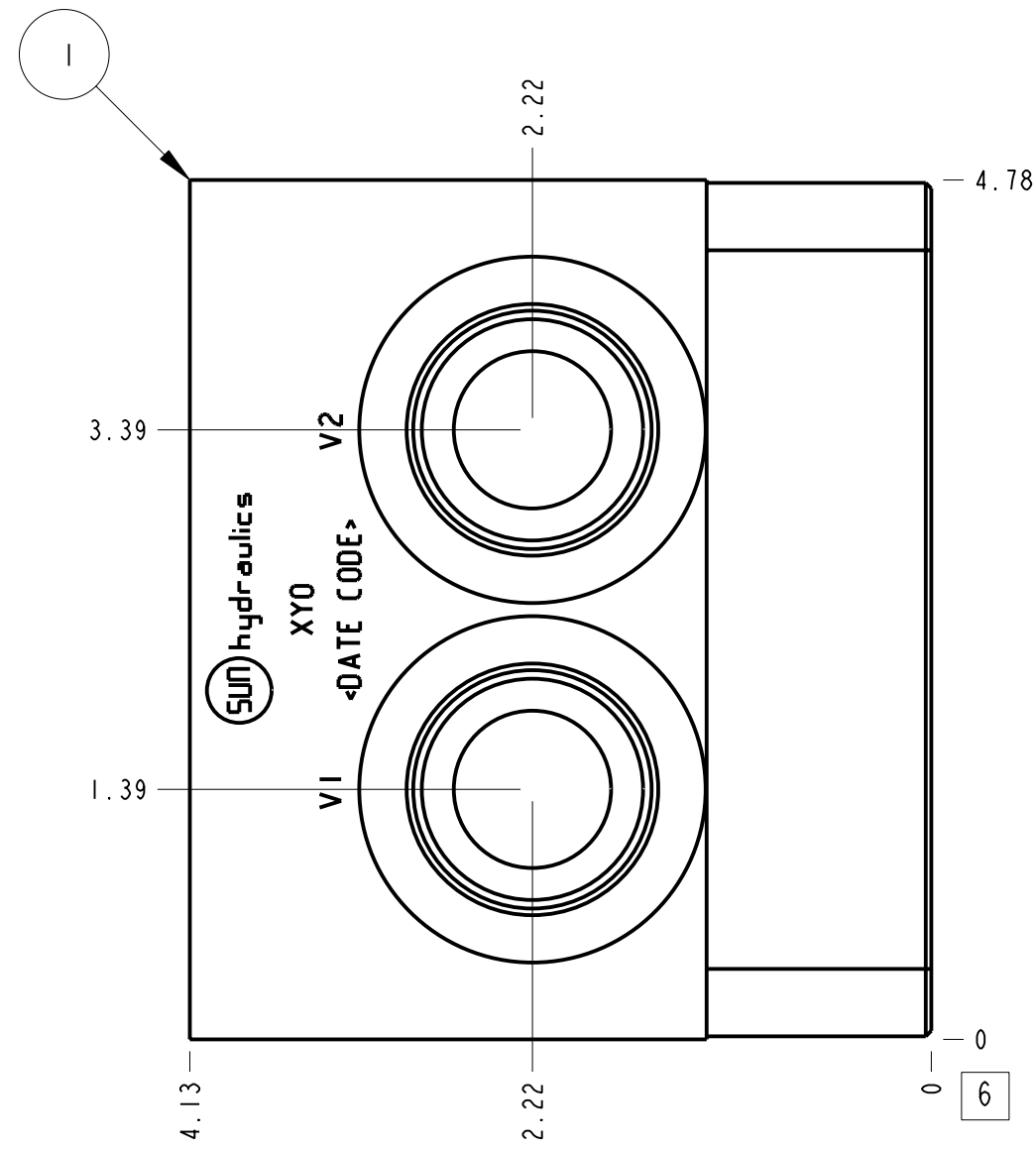


Technical Data	U.S. Units	Metric Units
Cavity	T-17A	
Body Features	Cross pilot	
Body Type	Motor mount	
Interface	Staffa 4", 5 piston	
Open Cavity Quantity	2	
Weight	3.654 lb.	1,657 kg.
Mounting Hole Diameter	.41 in.	10,4 mm
Mounting Hole Quantity	6	
Mounting Hole C'bore Diameter	.59 in.	15,0 mm
Mounting Hole C'bore Depth	.69 in.	17,5 mm



Notes

- Important: Carefully consider the maximum system pressure. The pressure rating of the manifold is dependent on the manifold material, with the port type/size a secondary consideration. Manifolds constructed of aluminum are not rated for pressures higher than 3000 psi (210 bar), regardless of the port type/size specified.
- This drawing is for reference only. It is generated by an automated process and does not fall under Sun's document control process.

Port Headings		
Product	Port	Size
XYO	Ports V1 & V2	SAE 16

I	152-144-004	6061-T6 ALUMINUM	BODY	I	
I T E M	PART NO.	SETTING	MATERIAL	PART NAME	Q T Y
MODEL	XYO		ALL DIMENSIONS IN INCH VIEWS ARE THIRD ANGLE		FIRST ANGLE THIRD ANGLE
DESCRIPTION	T-17A Motor mount Staffa 4", 5 piston Cross pilot	DATE	Nov-28-23	SCALE	0.944
		DWG SIZE	C	SHEET	I