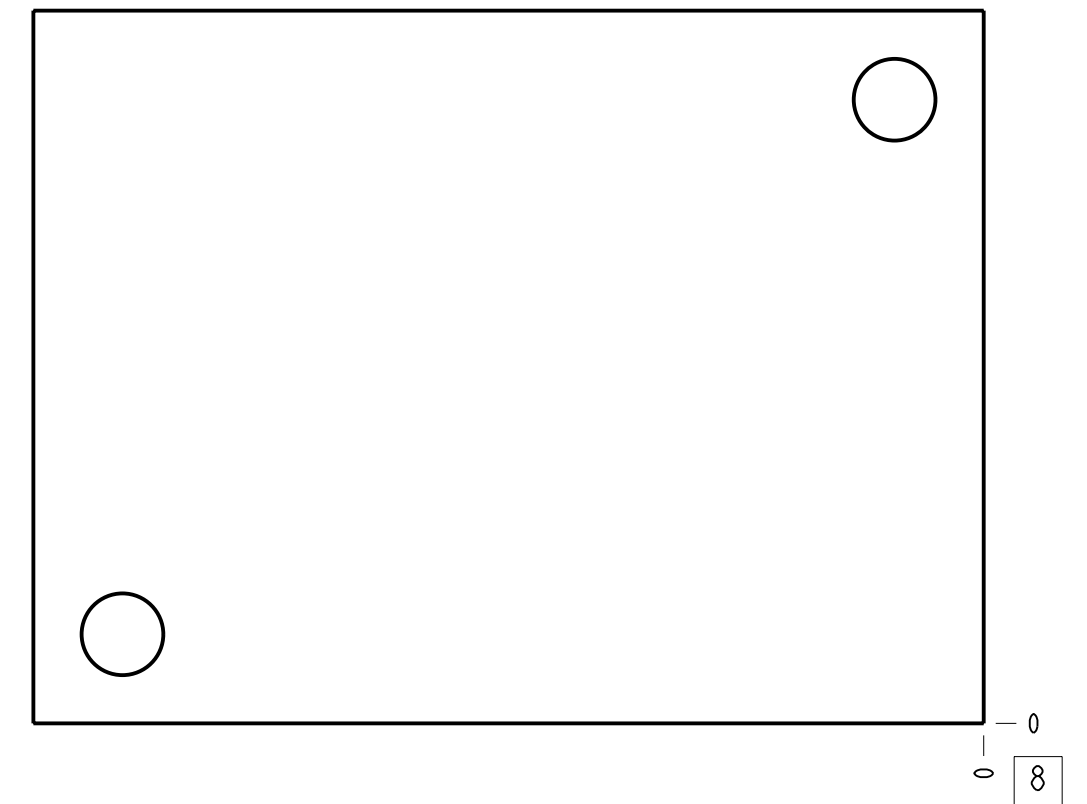
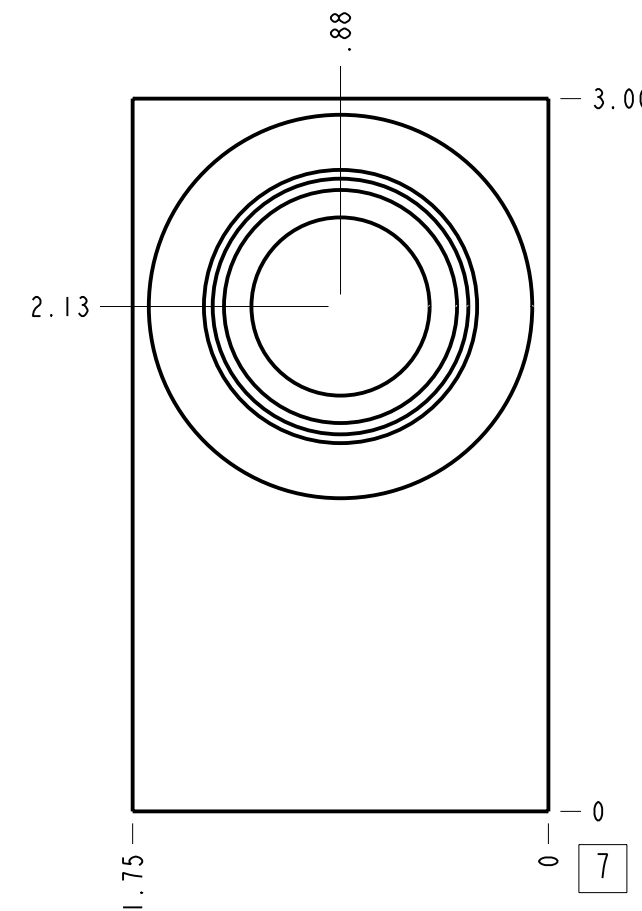
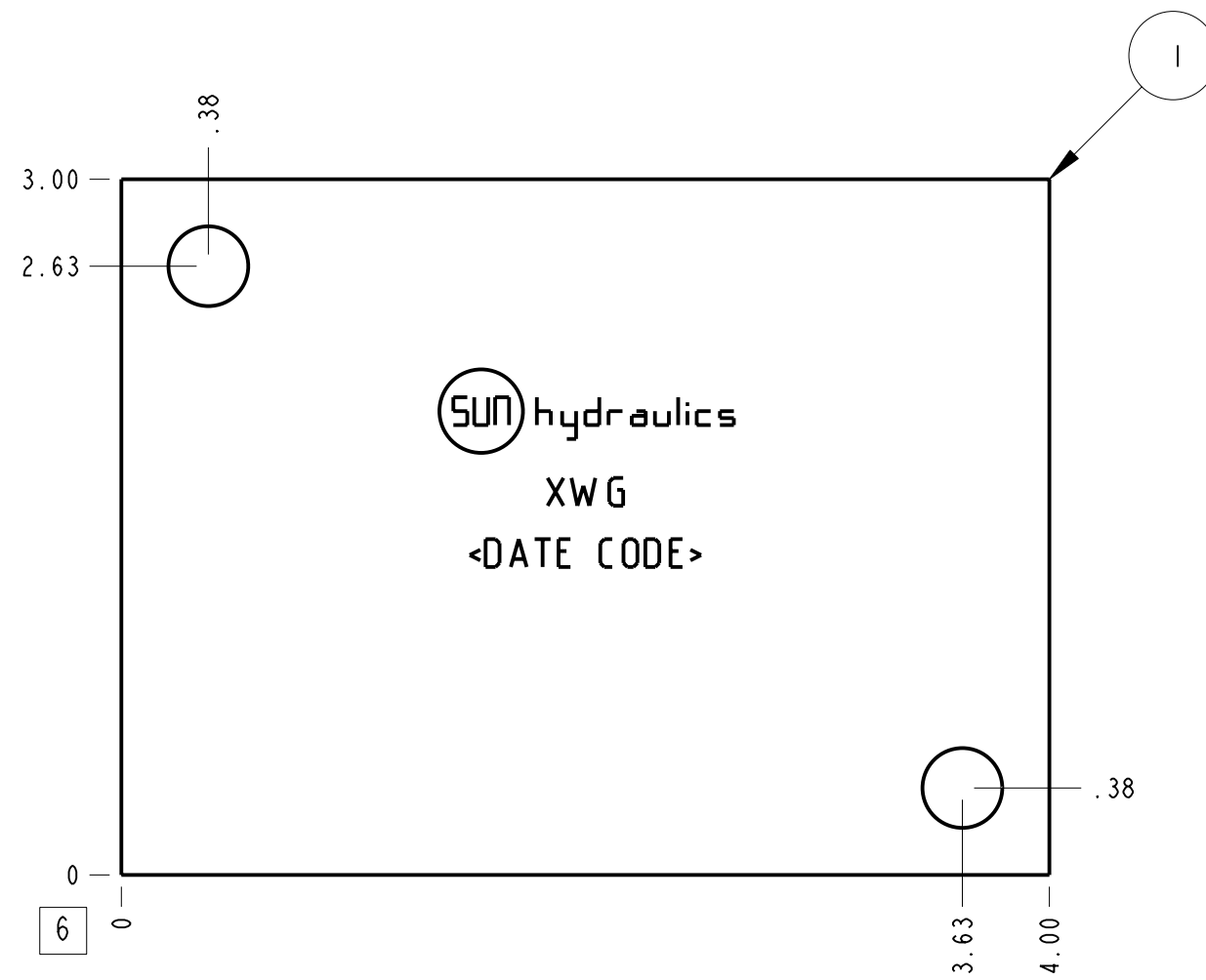
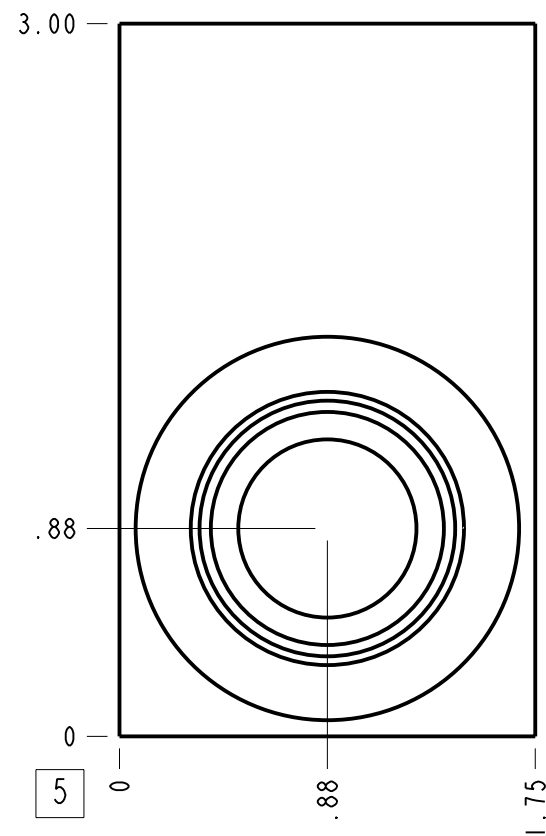
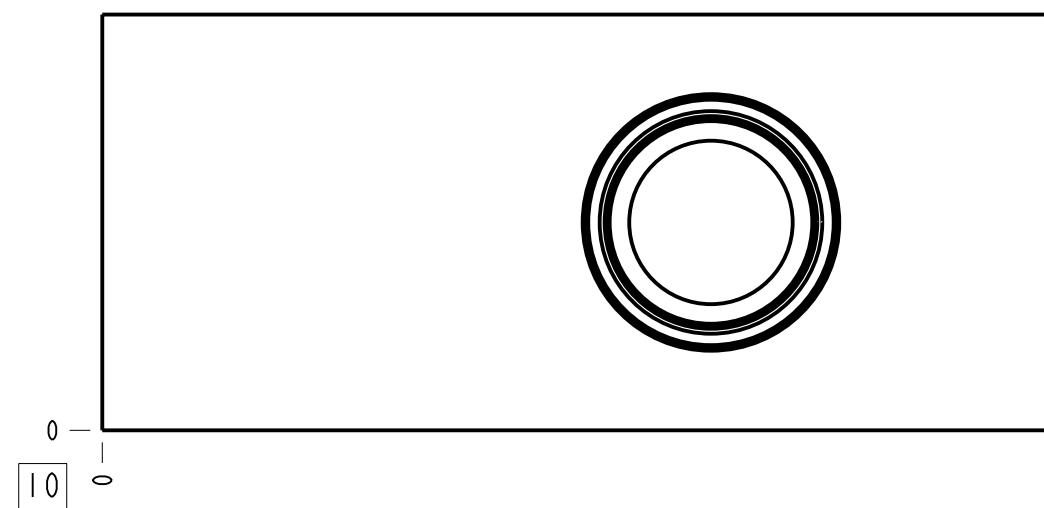


Technical Data	U.S. Units	Metric Units
Cavity	T-5A	
Body Features	Bidirectional	
Body Type	Line mount	
Interface	None	
Open Cavity Quantity	2	
Weight	1.529 lb.	0.694 kg.
Mounting Hole Diameter	.34 in.	8.6 mm
Mounting Hole Depth	Through	
Mounting Hole Quantity	2	



Notes

- Important: Carefully consider the maximum system pressure. The pressure rating of the manifold is dependent on the manifold material, with the port type/size a secondary consideration. Manifolds constructed of aluminum are not rated for pressures higher than 3000 psi (210 bar), regardless of the port type/size specified.
- This drawing is for reference only. It is generated by an automated process and does not fall under Sun's document control process.



Port Headings		
Product	Port	Size
XWG	All Ports	SAE 12

ITEM	151-669-006	6061-T6 ALUMINUM	BODY	QTY
MODEL	XWG	ALL DIMENSIONS IN INCH VIEWS ARE THIRD ANGLE		QTY
DESCRIPTION	T-5A Line mount Bidirectional	DATE	SCALE	DWG SIZE
		Jul-10-23	1.237	C I

