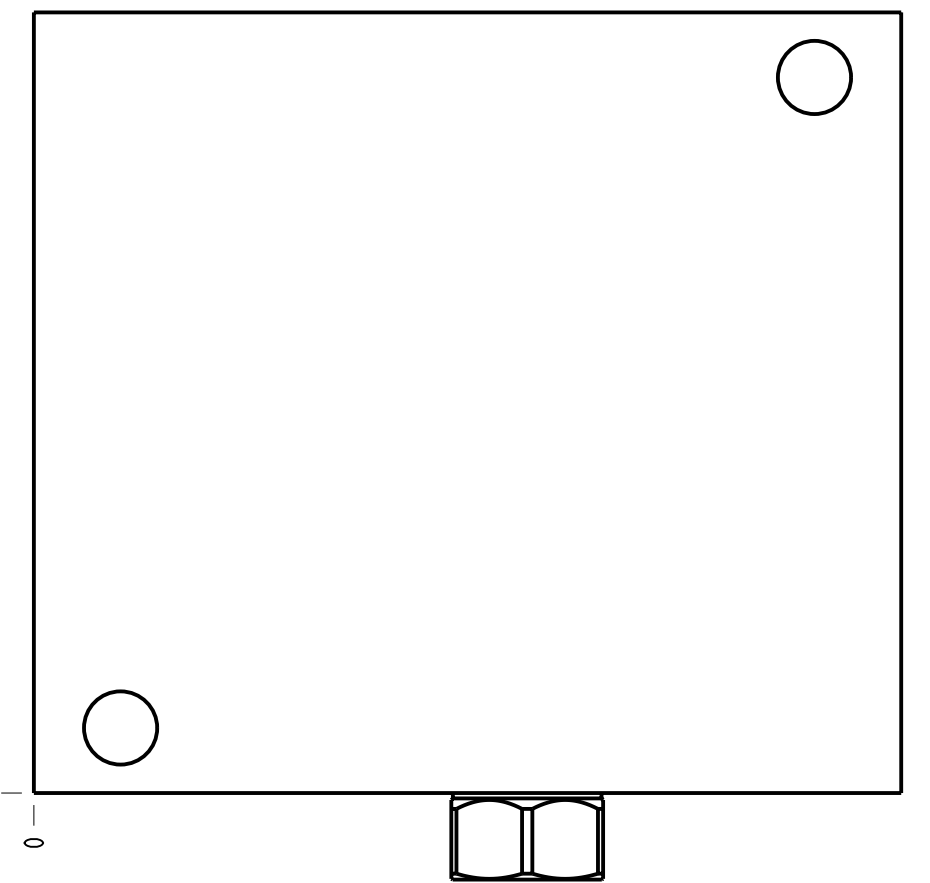
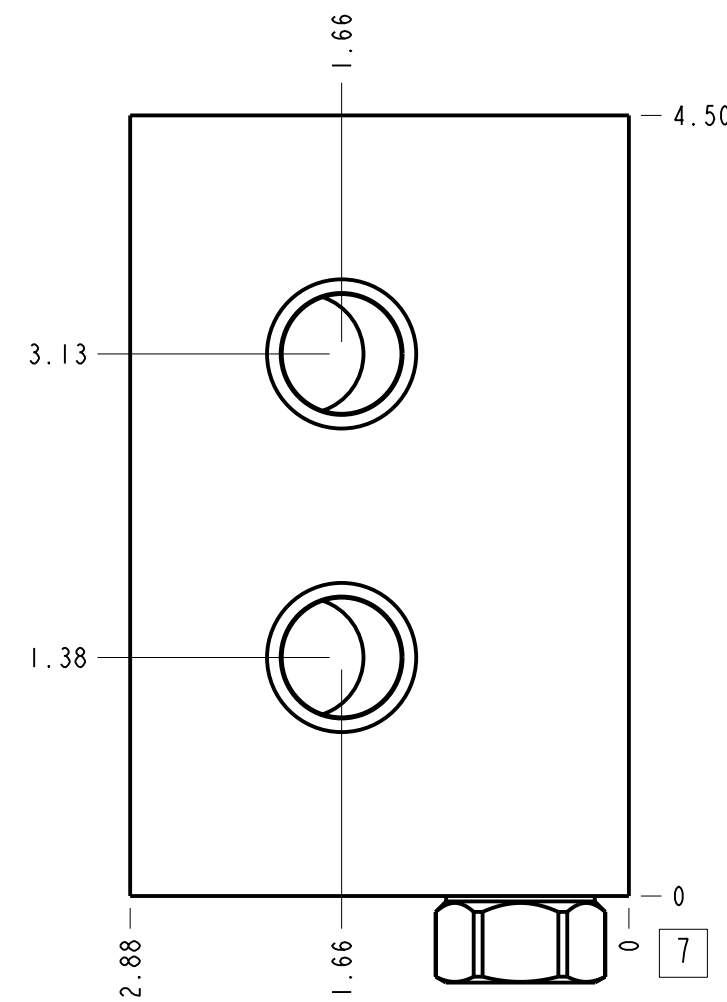
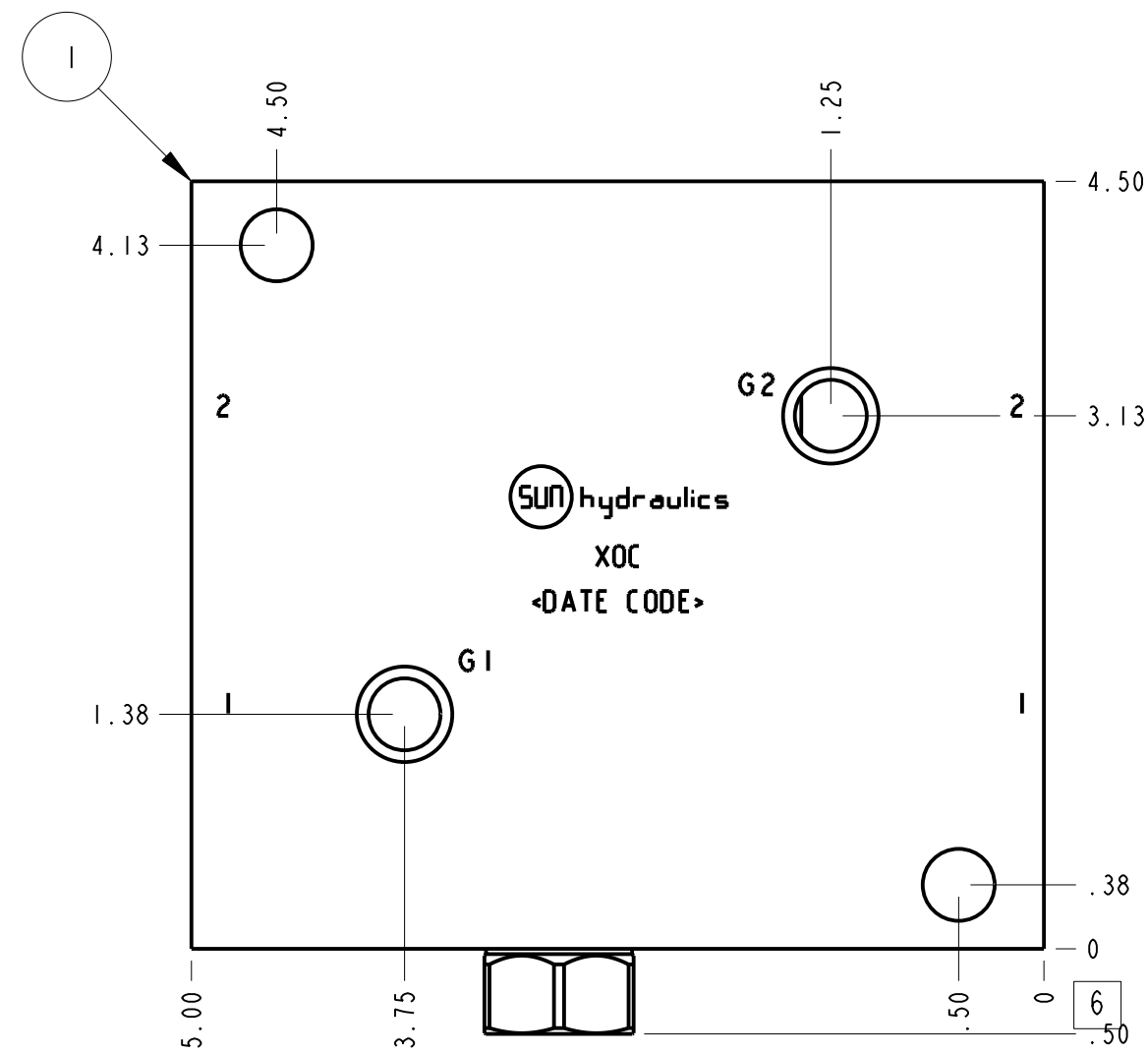
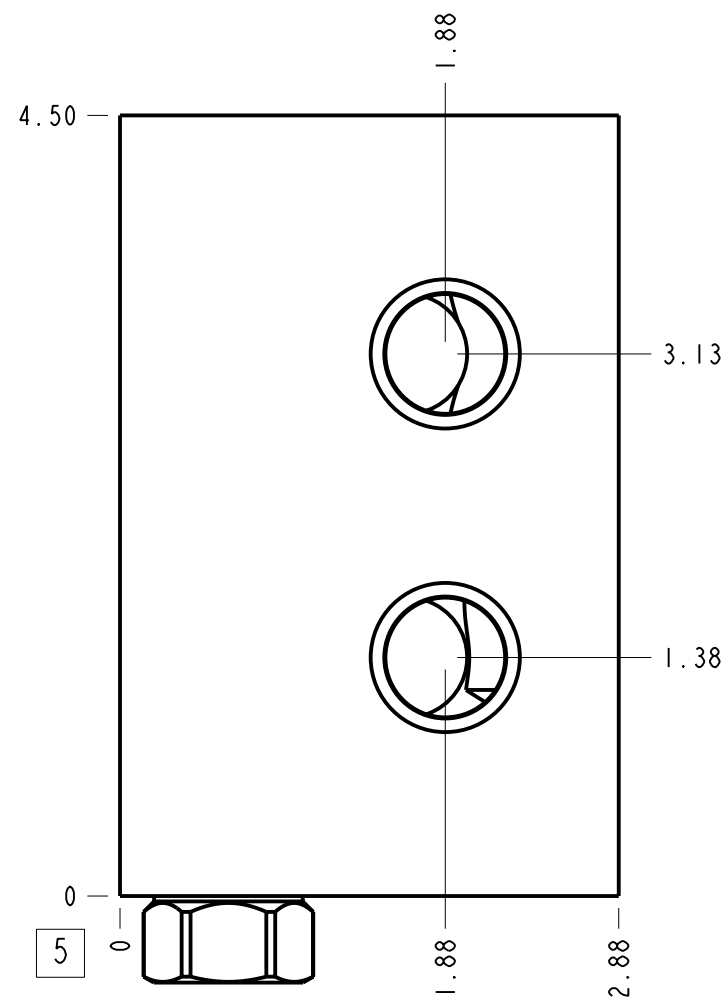
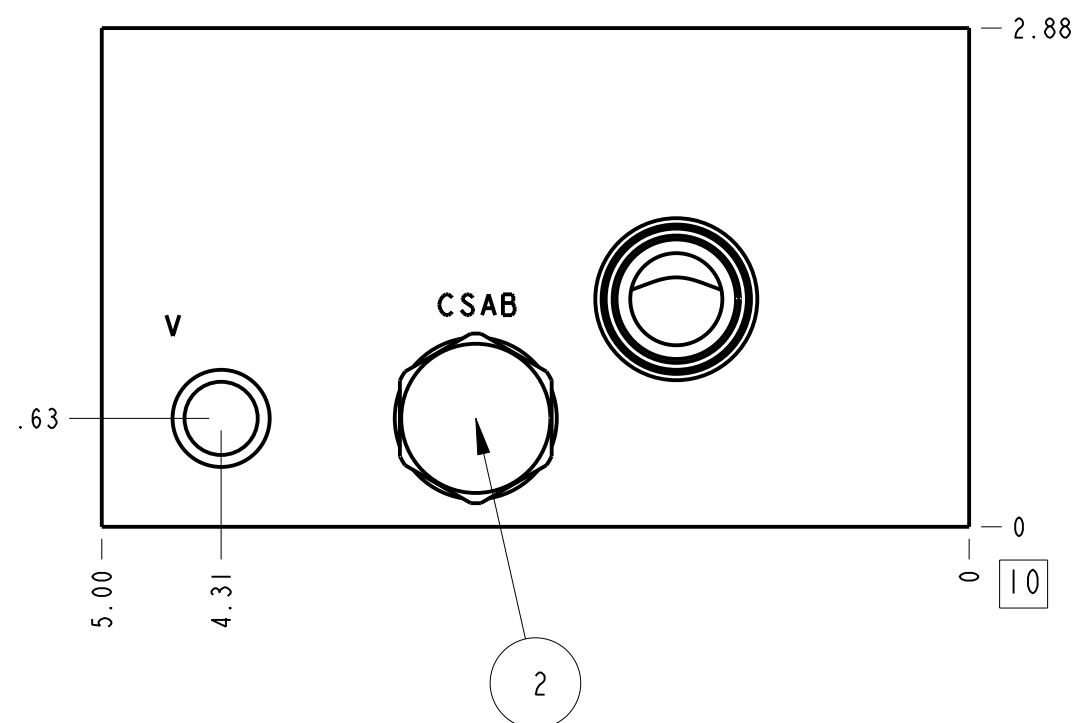


Technical Data	U.S. Units	Metric Units
Cavity	T-11A	
Body Features	Cross port with shuttle on port 3s	
Body Type	Line mount	
Interface	None	
Open Cavity Quantity	2	
Weight	5.686 lb.	2,579 kg.
Mounting Hole Diameter	.42 in.	10,7 mm
Mounting Hole Depth	Through	
Mounting Hole Quantity	2	
Includes integral cartridge(s)	Yes (see Included Components)	



Notes

1. Important: Carefully consider the maximum system pressure. The pressure rating of the manifold is dependent on the manifold material, with the port type/size a secondary consideration. Manifolds constructed of aluminum are not rated for pressures higher than 3000 psi (210 bar), regardless of the port type/size specified.
2. This drawing is for reference only. It is generated by an automated process and does not fall under Sun's document control process.



Port Headings		
Product	Port	Size
XOC	Ports 1 & 2	1/2" NPTF
XOC	Port V	1/4" NPTF
XOC	Gage Ports	1/4" NPTF

2	CSAB-XXN			SHUTTLE VALVE	1
1	152-137-003		6061-T6 ALUMINUM	BODY	1
ITEM	PART NO.	SETTING	MATERIAL	PART NAME	QTY
	MODEL		XOC		
DESCRIPTION			ALL DIMENSIONS IN INCH VIEWS ARE THIRD ANGLE		
T-11A Line mount Cross port with shuttle on port 3s			DATE	SCALE	DWG SIZE SHEET
			Jun-30-23	0.903	C 1

