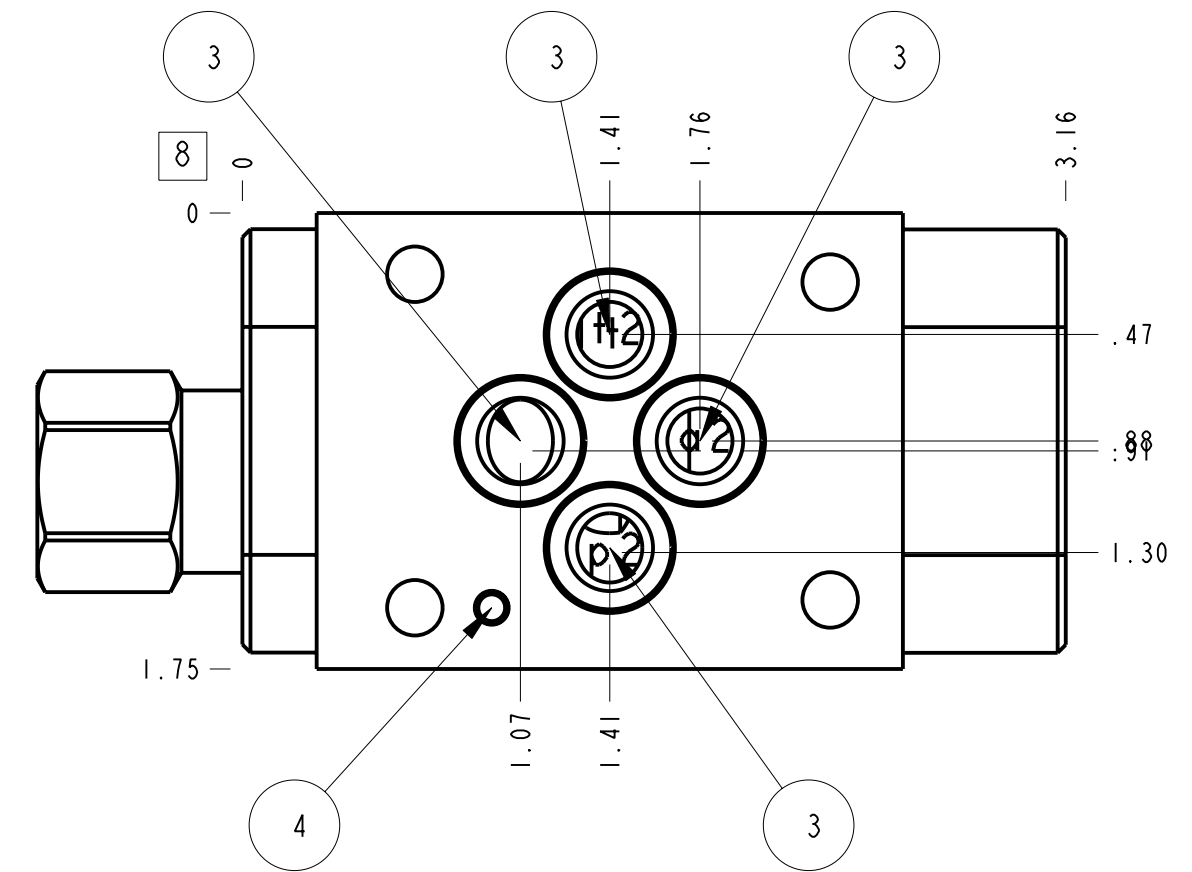
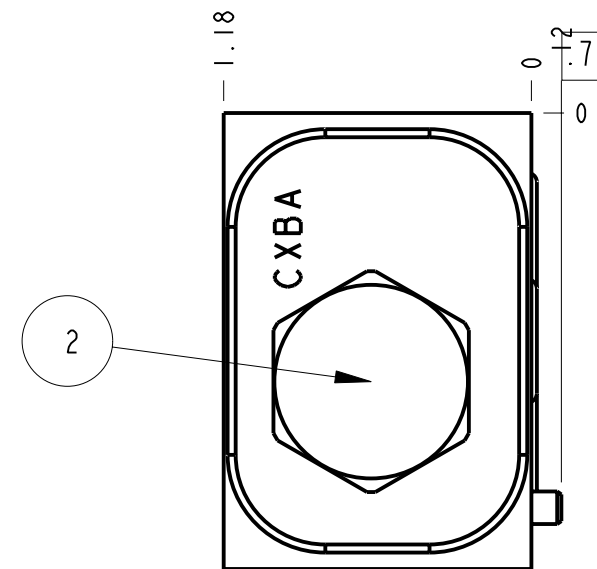
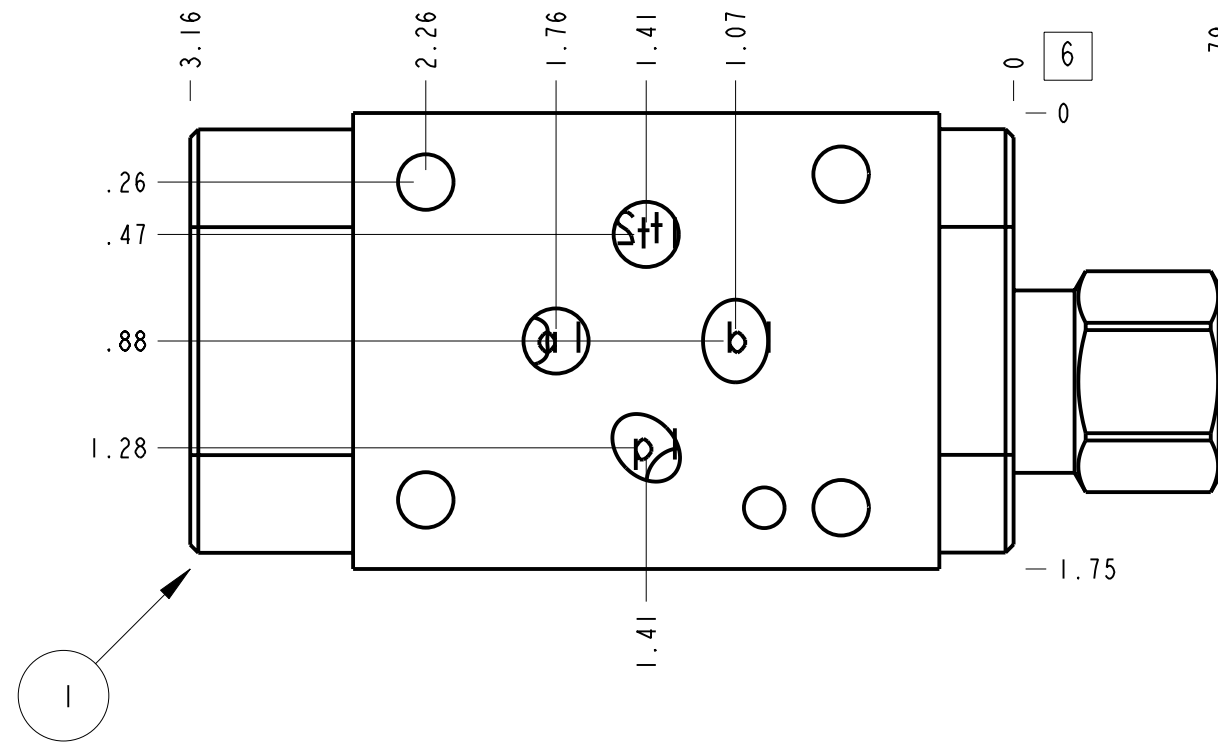
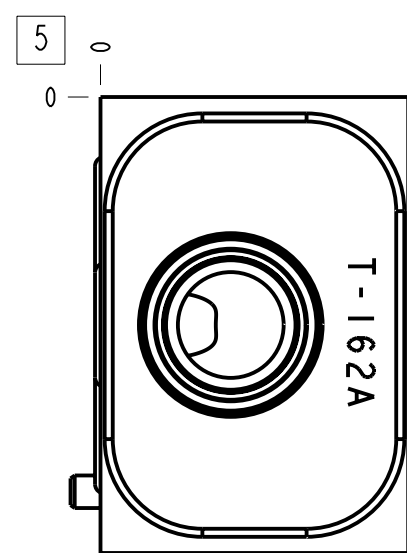
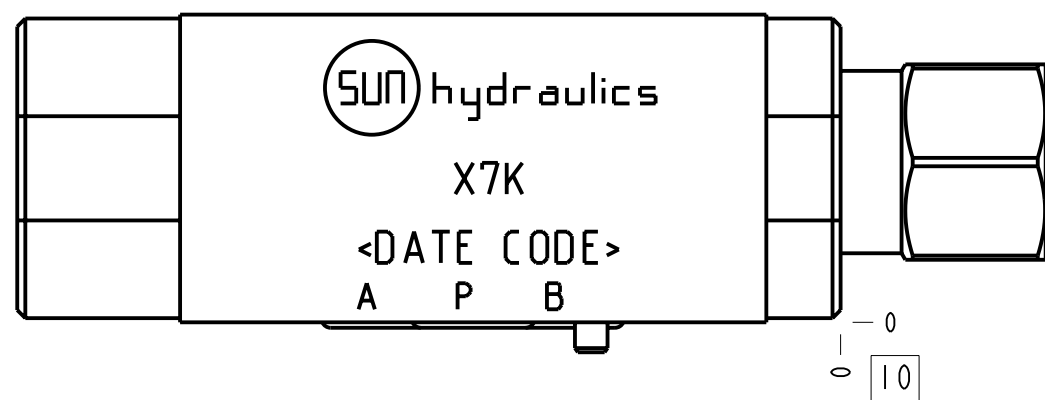


Technical Data	U.S. Units	Metric Units
Cavity	T-162A	
Body Features	Out of A, check on P	
Body Type	Sandwich	
Interface	ISO 03 - 30mm	
Open Cavity Quantity	1	
Weight	0.665 lb.	0,302 kg.
Seal Plate Included (see notes)	Yes	
Includes integral cartridge(s)	Yes (see Included Components)	



Notes

- Important: Carefully consider the maximum system pressure. The pressure rating of the manifold is dependent on the manifold material, with the port type/size a secondary consideration. Manifolds constructed of aluminum are not rated for pressures higher than 3000 psi (210 bar), regardless of the port type/size specified.
- This drawing is for reference only. It is generated by an automated process and does not fall under Sun's document control process.



4	811-001-006		LOW CARBON STEEL	MACHINED PART	1
3	500-001-012		N-0674-70	O-RING	4
2	CXBAXCN			CHECK VALVE	1
1	157-869		6061-T6 ALUMINUM	BODY	1
ITEM	PART NO.	SETTING	MATERIAL	PART NAME	QTY

MODEL		X7K		ALL DIMENSIONS IN INCH VIEWS ARE THIRD ANGLE		FIRST ANGLE		THIRD ANGLE			
DESCRIPTION		T-162A Sandwich ISO 03 - 30mm Out of A, check on P		DATE	Dec-08-23	SCALE	1.357	DWG SIZE	C	SHEET	I