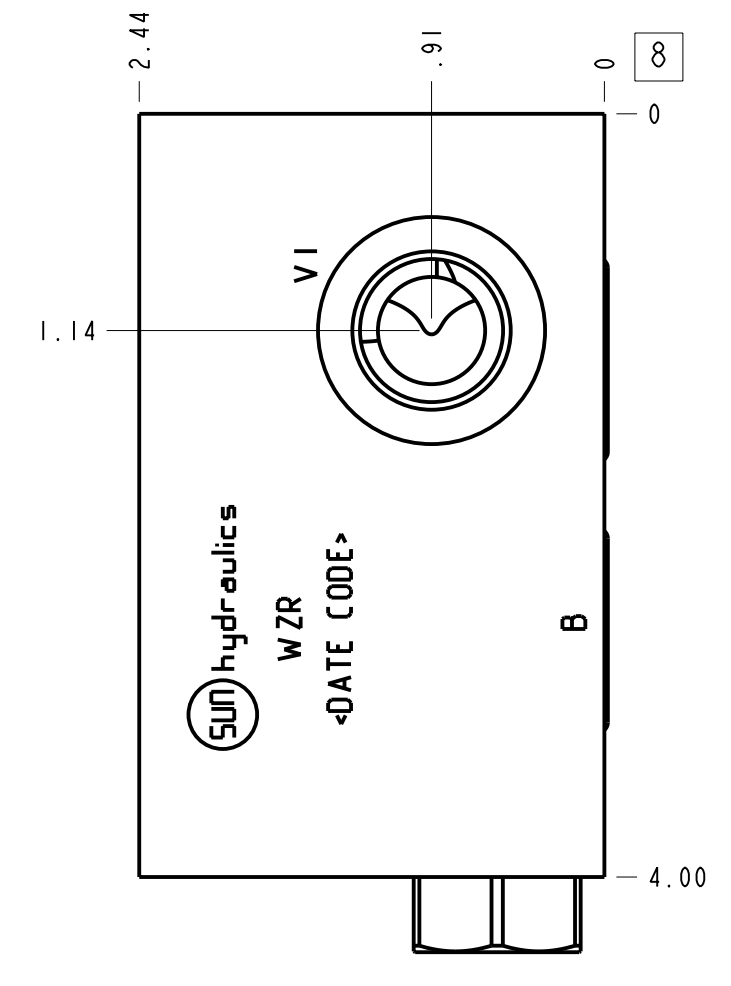
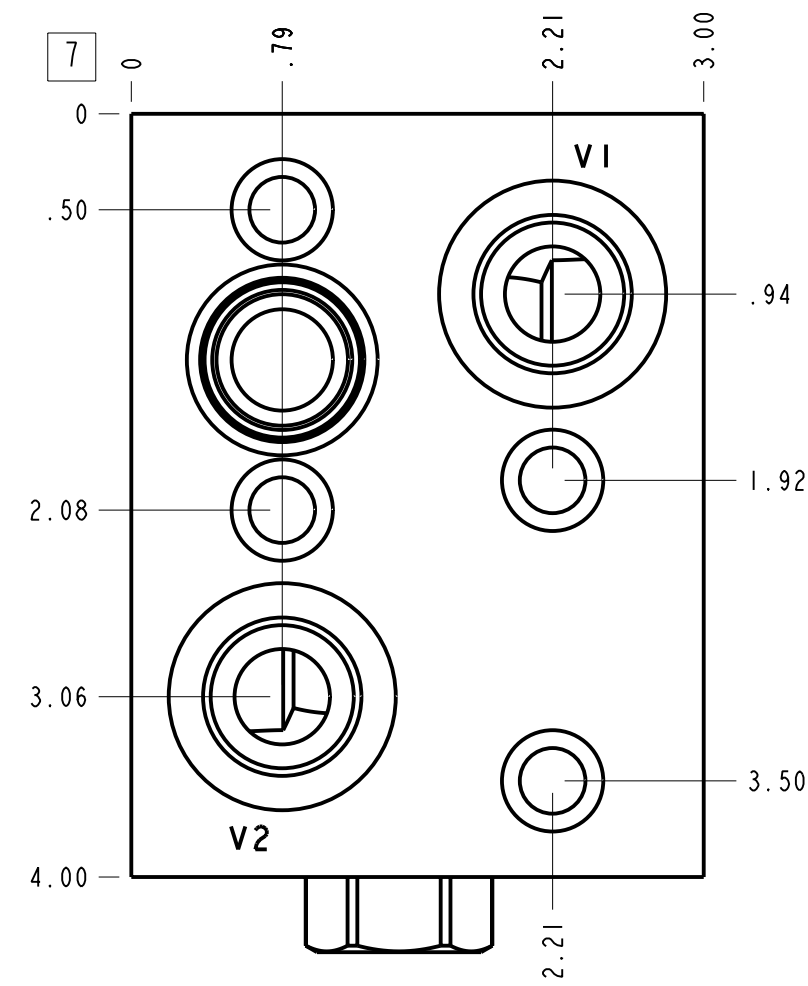
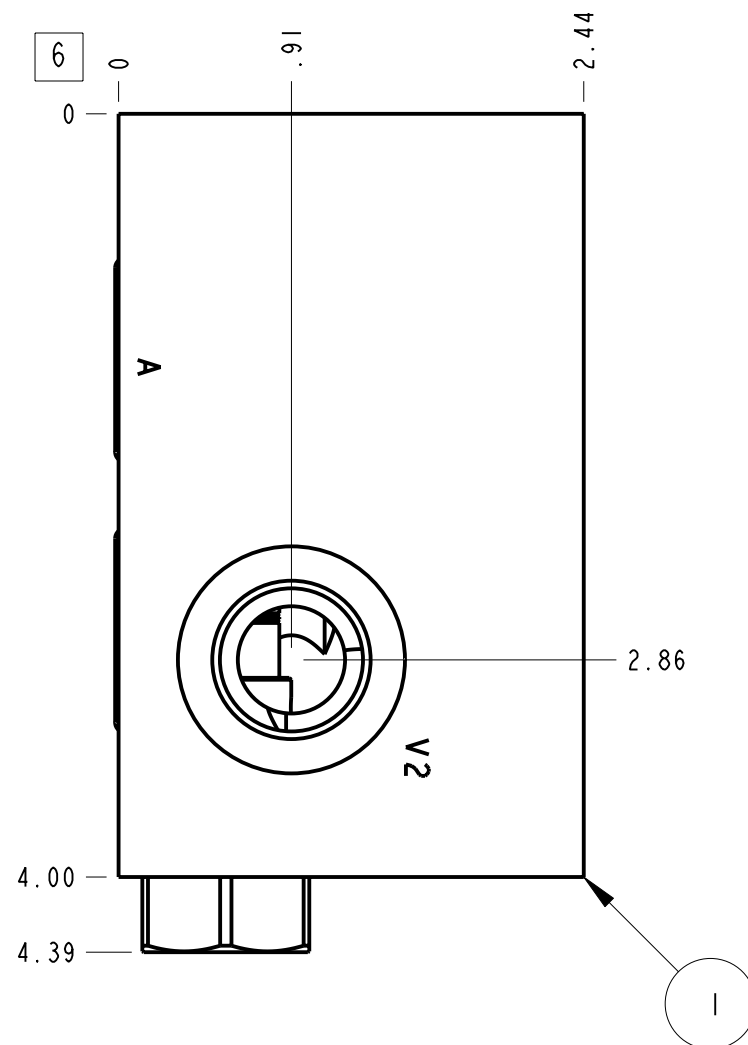
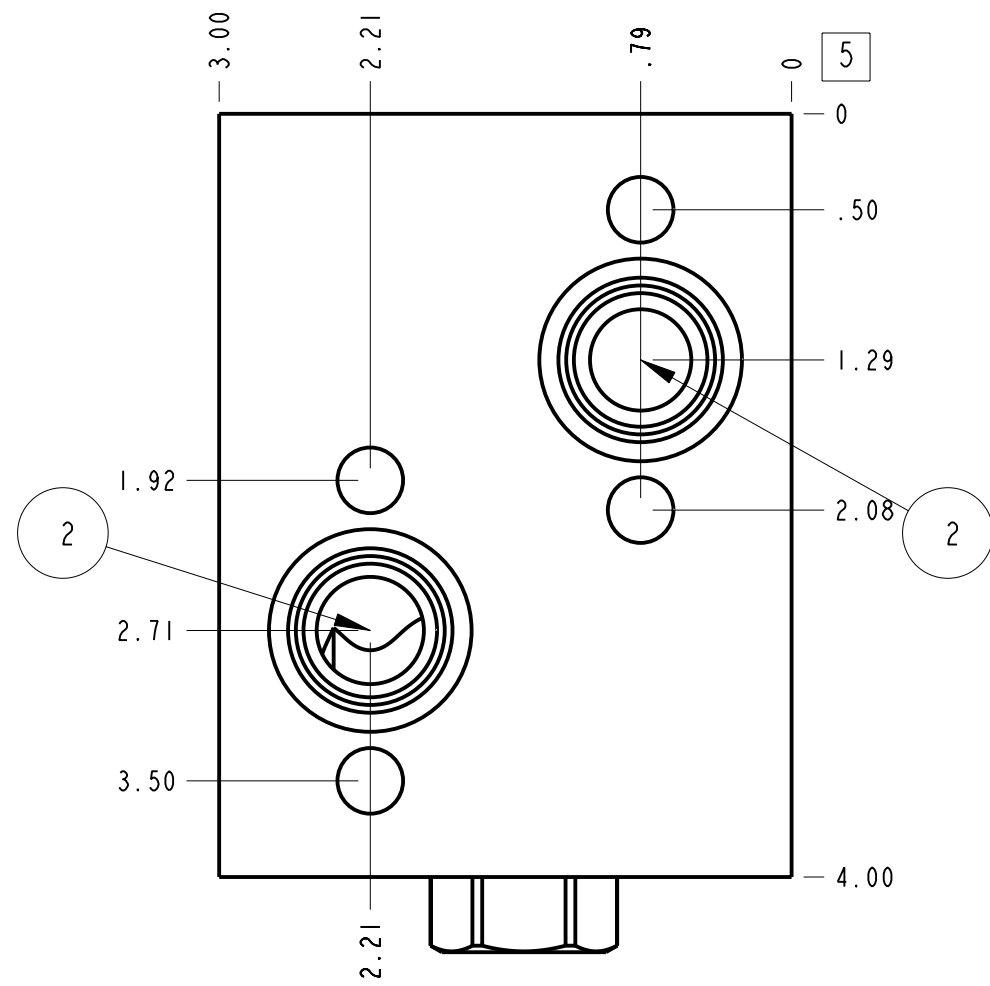
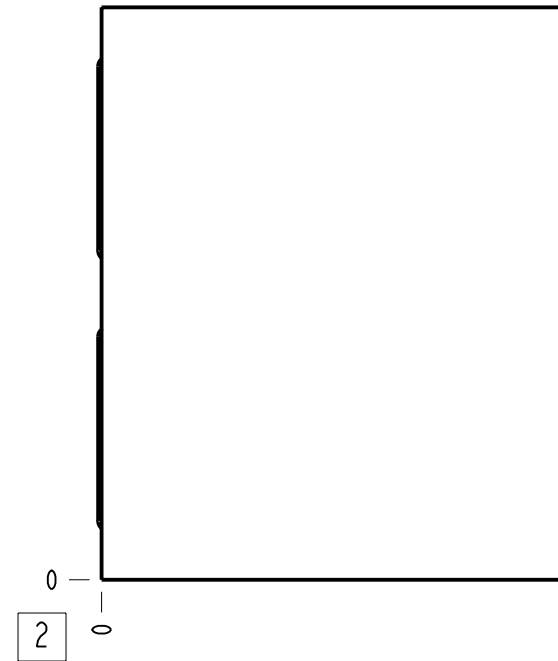
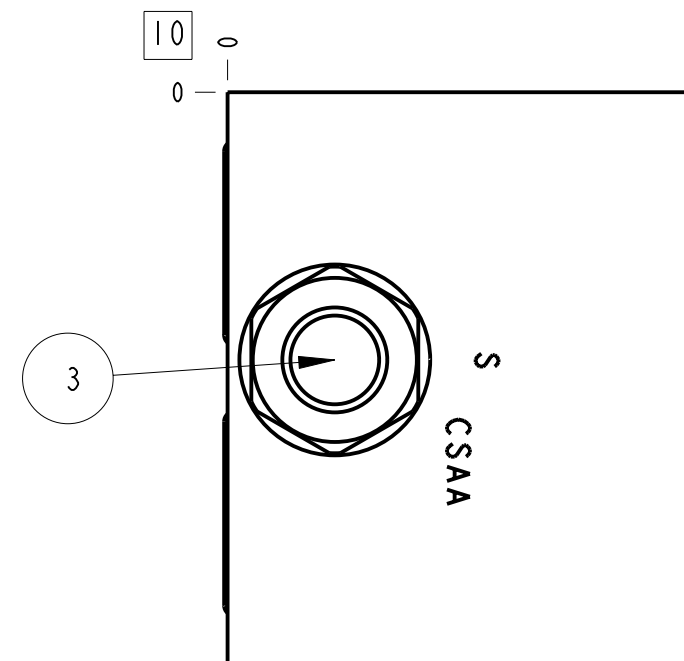


Technical Data	U.S. Units	Metric Units
Cavity	T-11A	
Body Features	Cross pilot on A with shuttle	
Body Type	Motor mount	
Interface	Danfoss OMP/OMR	
Open Cavity Quantity	1	
Weight	2.497 lb.	1,132 kg.
Mounting Hole Diameter	.34 in.	8.6 mm
Mounting Hole Depth	.38 in.	9,7 mm
Mounting Hole Quantity	4	
Mounting Hole C'bore Diameter	.53 in.	13,5 mm
Includes integral cartridge(s)	Yes (see Included Components)	



Notes

1. Port S is the external connection at the top of the shuttle cartridge.
2. Important: Carefully consider the maximum system pressure. The pressure rating of the manifold is dependent on the manifold material, with the port type/size a secondary consideration. Manifolds constructed of aluminum are not rated for pressures higher than 3000 psi (210 bar), regardless of the port type/size specified.
3. This drawing is for reference only. It is generated by an automated process and does not fall under Sun's document control process.



Port Headings		
Product	Port	Size
WZR	Ports V1 & V2	1/2" BSPP
WZR	Port S	1/4" BSPP

3	CSAABXN			SHUTTLE VALVE	1
2	500-001-118		N-0674-70	O-RING	2
1	159-308-003		6061-T6 ALUMINUM	BODY	1
ITEM	PART NO.	SETTING	MATERIAL	PART NAME	QTY

MODEL: WZR

DESCRIPTION: T-11A Motor mount Danfoss OMP/OMR Cross pilot on A with shuttle

DATE: Mar-14-24

SCALE: 0.994

DWG SIZE: C

SHEET: 1

ALL DIMENSIONS IN INCH VIEWS ARE THIRD ANGLE

FIRST ANGLE

THIRD ANGLE