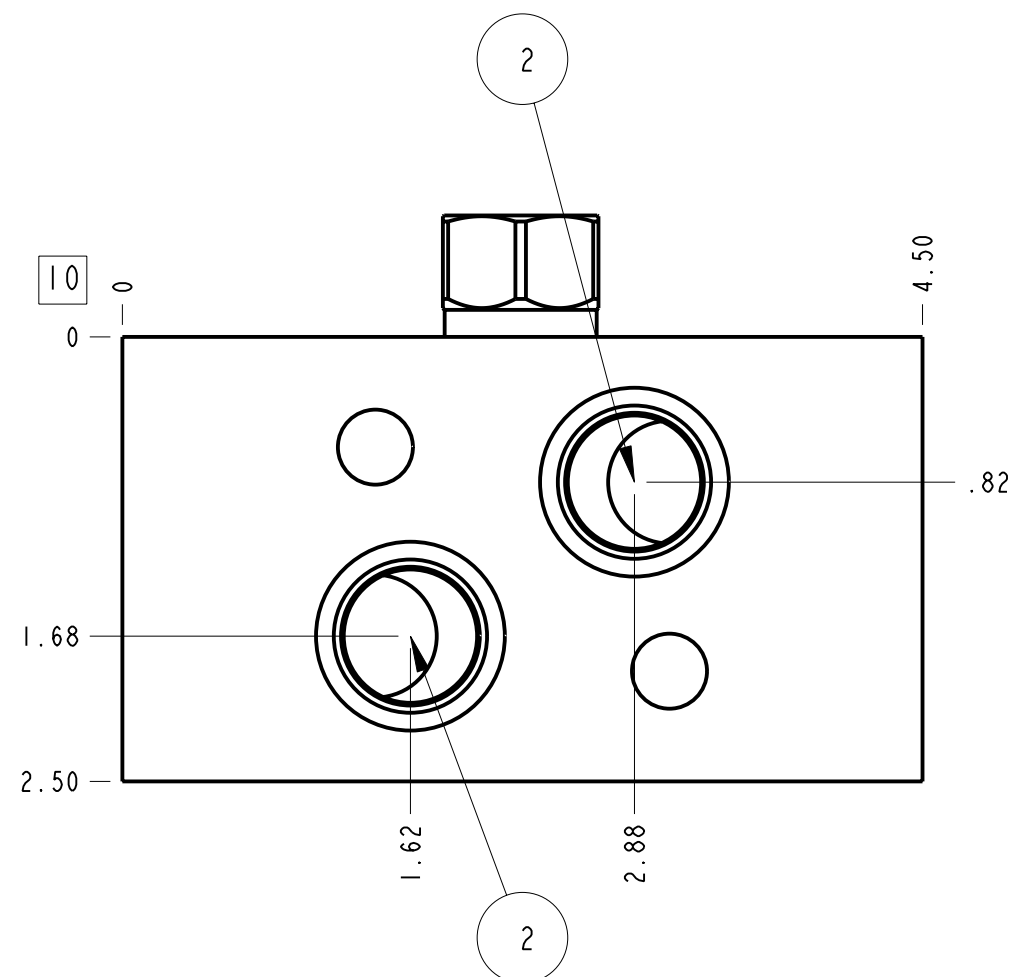
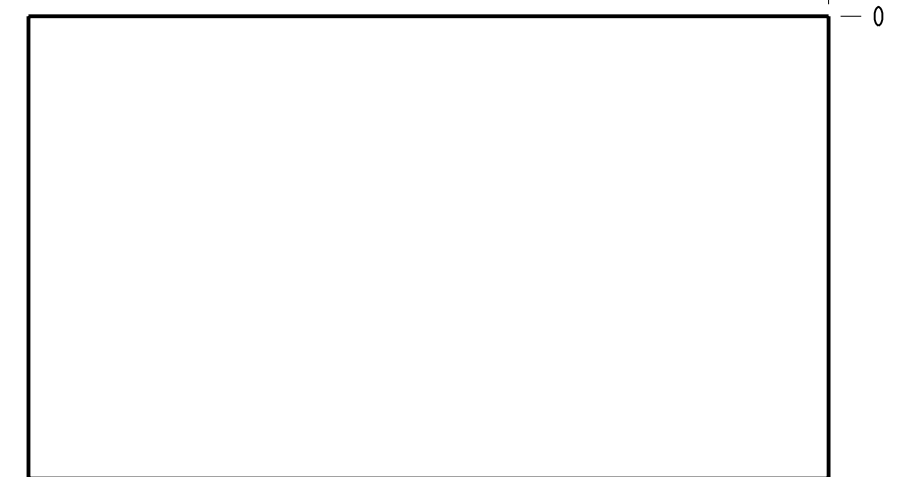
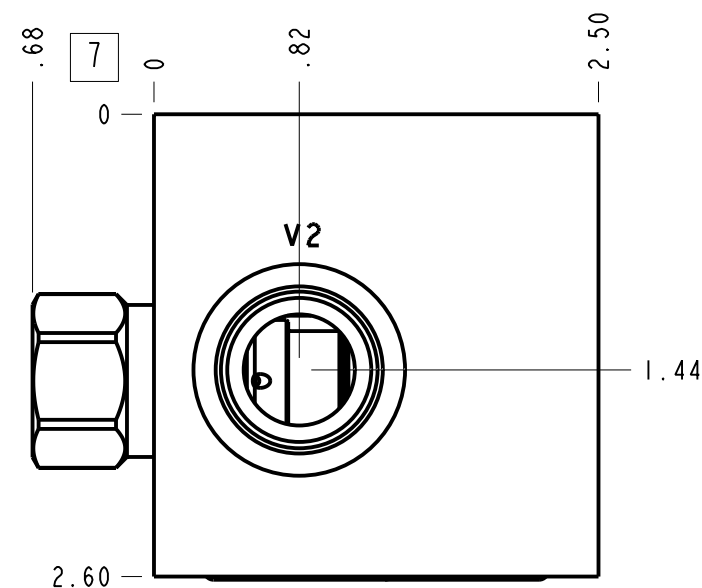
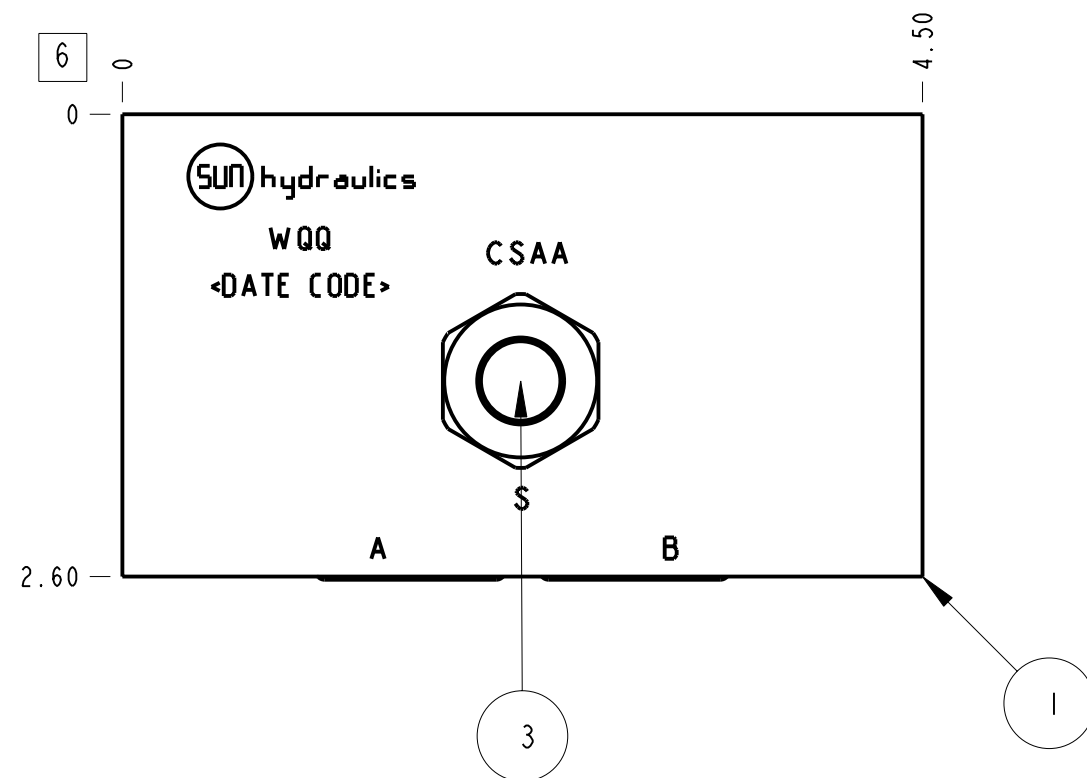
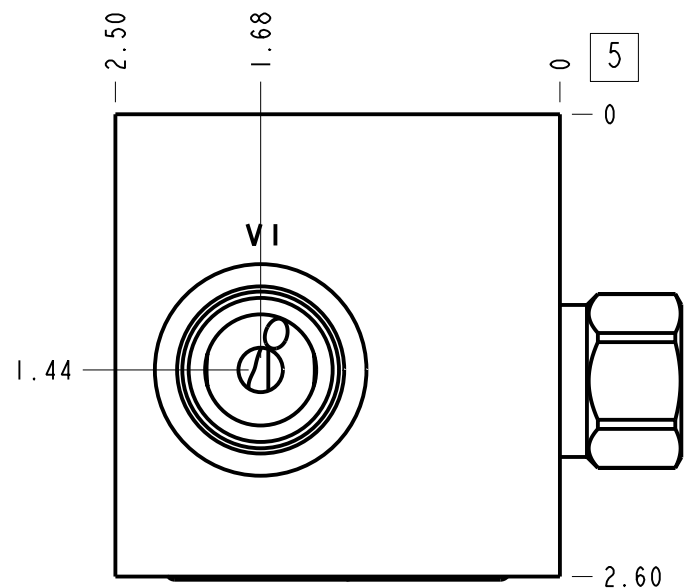


Technical Data	U.S. Units	Metric Units
Cavity	T-2A	
Body Features	Cross pilot with shuttle	
Body Type	Motor mount	
Interface	Danfoss OMS	
Open Cavity Quantity	2	
Weight	2.453 lb.	1,113 kg.
Mounting Hole Diameter	.42 in.	10,7 mm
Mounting Hole Depth	Through	
Mounting Hole Quantity	2	
Mounting Hole C'bore Diameter	.69 in.	17,5 mm
Mounting Hole C'bore Depth	.43 in.	11,0 mm
Includes integral cartridge(s)	Yes (see Included Components)	



Notes

1. Port S is the external connection at the top of the shuttle cartridge.
2. Important: Carefully consider the maximum system pressure. The pressure rating of the manifold is dependent on the manifold material, with the port type/size a secondary consideration. Manifolds constructed of aluminum are not rated for pressures higher than 3000 psi (210 bar), regardless of the port type/size specified.
3. This drawing is for reference only. It is generated by an automated process and does not fall under Sun's document control process.

Port Headings		
Product	Port	Size
WQQ	Ports V1 & V2	SAE 10
WQQ	Port S	SAE 4

3	CSAAEXN			SHUTTLE VALVE	1
2	500-001-118		N-0674-70	O-RING	2
1	159-336-002		6061-T6 ALUMINUM	BODY	1
ITEM	PART NO.	SETTING	MATERIAL	PART NAME	QTY

MODEL: WQQ

DESCRIPTION: T-2A Motor mount Danfoss OMS Cross pilot with shuttle

DATE: Jun-25-24

SCALE: 0.926

DWG SIZE: C

SHEET: 1

ALL DIMENSIONS IN INCH VIEWS ARE THIRD ANGLE

FIRST ANGLE

THIRD ANGLE