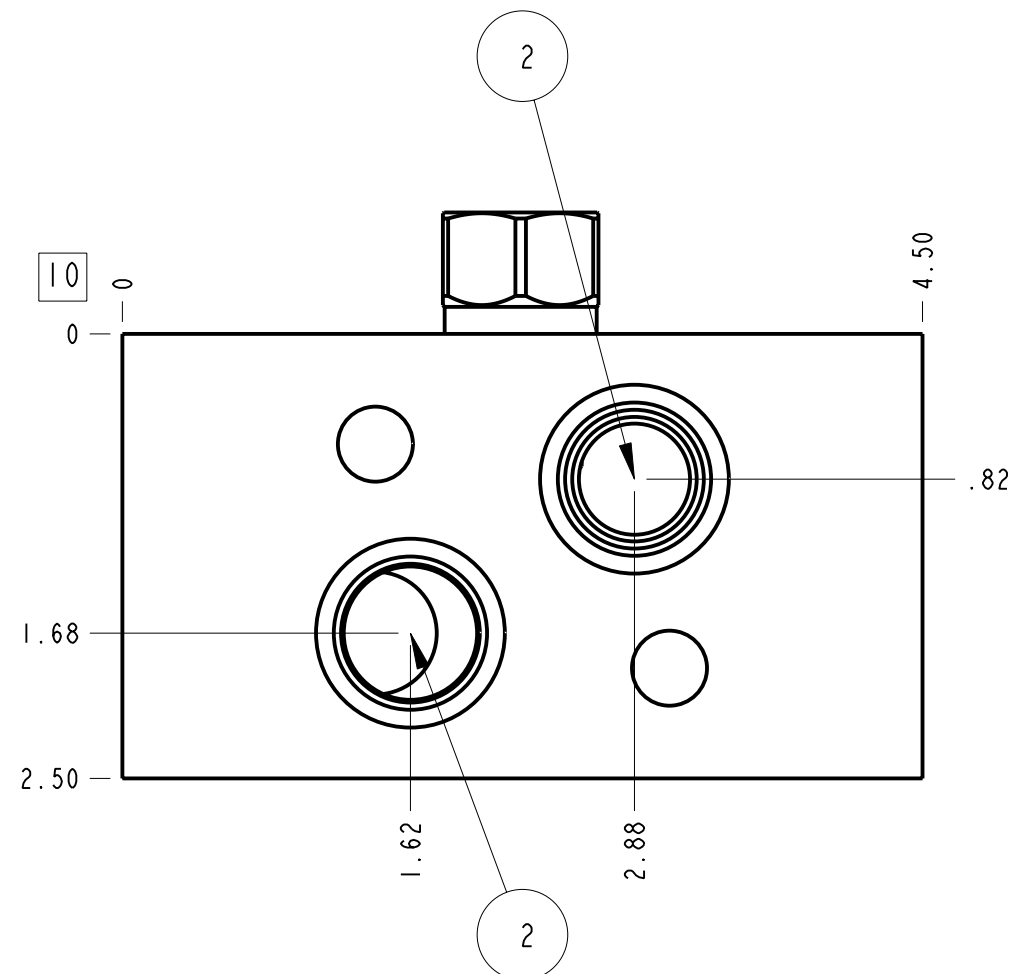
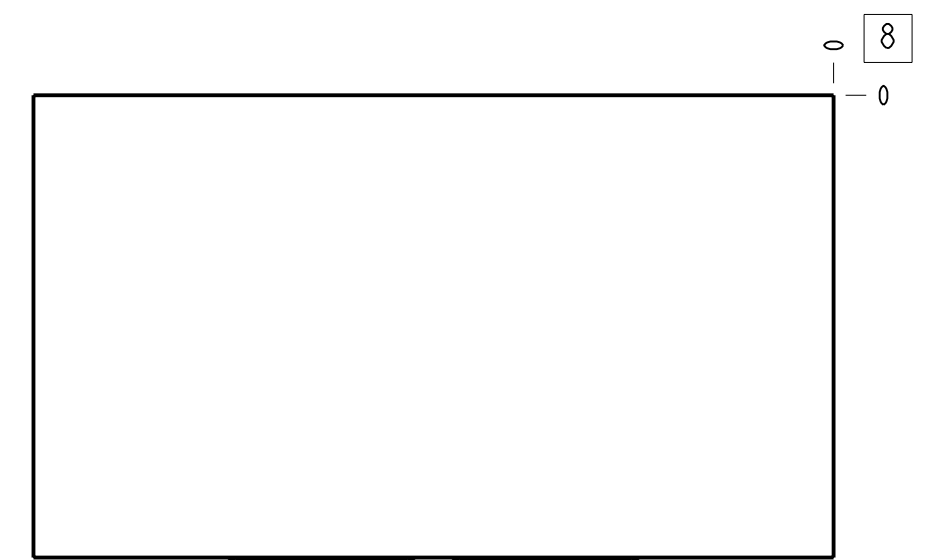
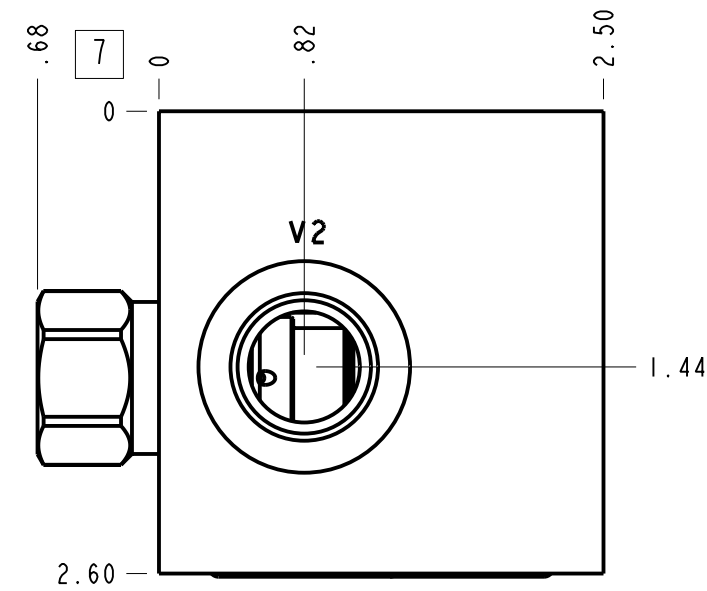
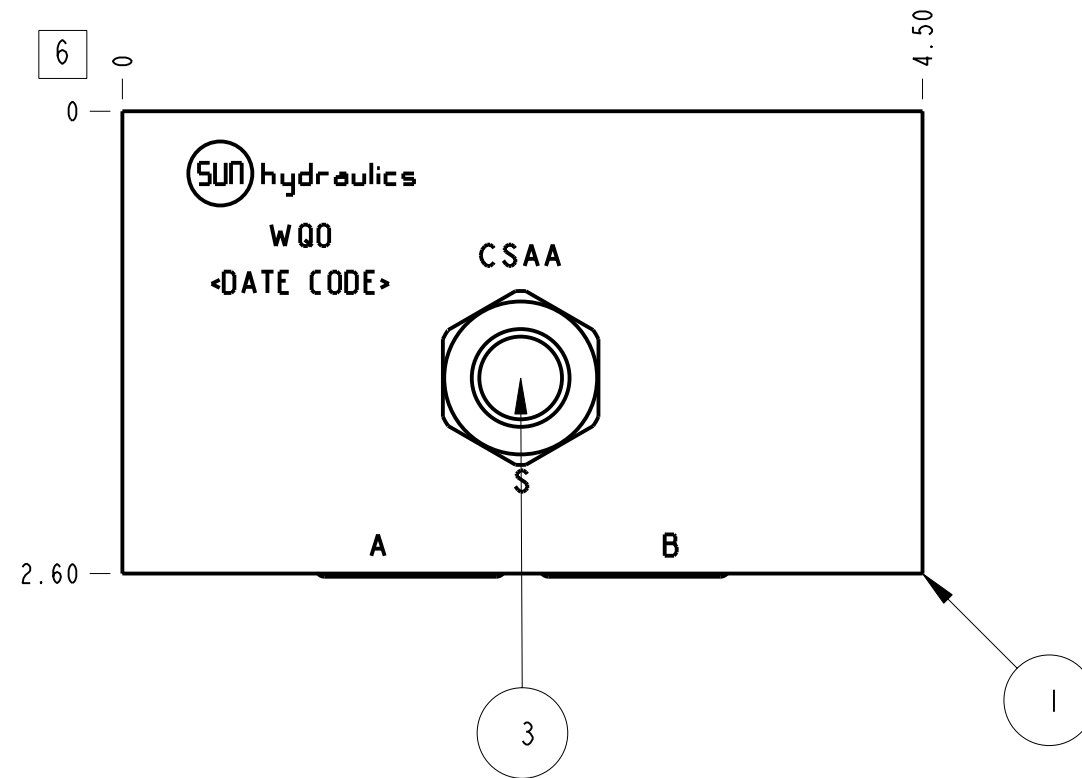
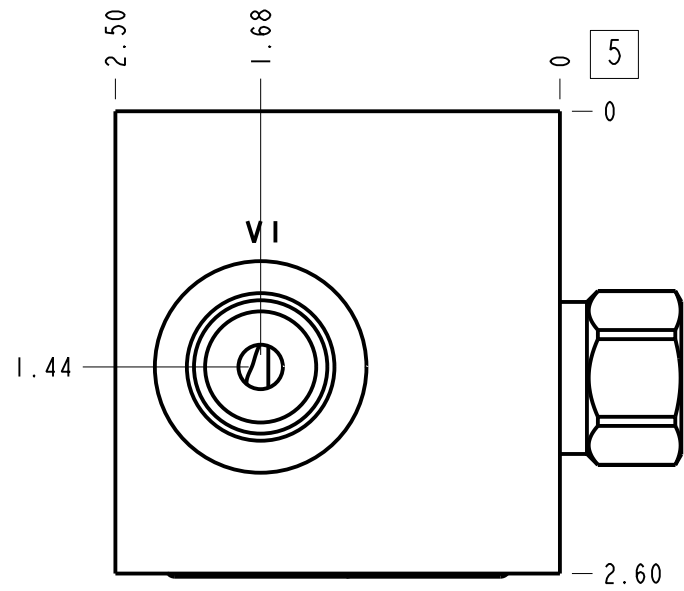


Technical Data	U.S. Units	Metric Units
Cavity	T-2A	
Body Features	Cross pilot on A with shuttle	
Body Type	Motor mount	
Interface	Danfoss OMS	
Open Cavity Quantity	1	
Weight	2.582 lb.	1,171 kg.
Mounting Hole Diameter	.42 in.	10,7 mm
Mounting Hole C'bore Diameter	.69 in.	17,5 mm
Mounting Hole C'bore Depth	.41 in.	10,4 mm
Includes integral cartridge(s)	Yes (see Included Components)	



Notes

1. Port S is the external connection at the top of the shuttle cartridge.
2. Important: Carefully consider the maximum system pressure. The pressure rating of the manifold is dependent on the manifold material, with the port type/size a secondary consideration. Manifolds constructed of aluminum are not rated for pressures higher than 3000 psi (210 bar), regardless of the port type/size specified.
3. This drawing is for reference only. It is generated by an automated process and does not fall under Sun's document control process.

Port Headings		
Product	Port	Size
WQO	Ports V1 & V2	1/2" BSPP
WQO	Port S	1/4" BSPP

3	CSAABXN			SHUTTLE VALVE	1
2	500-001-118		N-0674-70	O-RING	2
1	159-337-003		6061-T6 ALUMINUM	BODY	1
ITEM	PART NO.	SETTING	MATERIAL	PART NAME	QTY

MODEL		WQO		ALL DIMENSIONS IN INCH VIEWS ARE THIRD ANGLE		FIRST ANGLE		THIRD ANGLE	
DESCRIPTION		DATE	SCALE	DWG SIZE	SHEET				
T-2A Motor mount Danfoss OMS Cross pilot on A with shuttle		Aug-12-24	0.926	C	1				