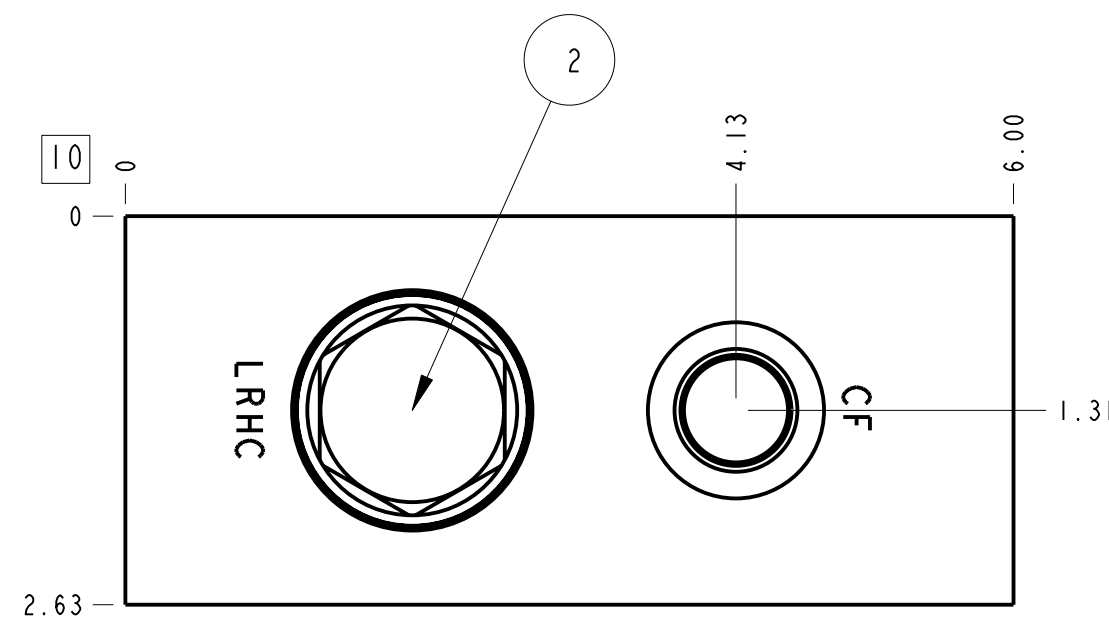
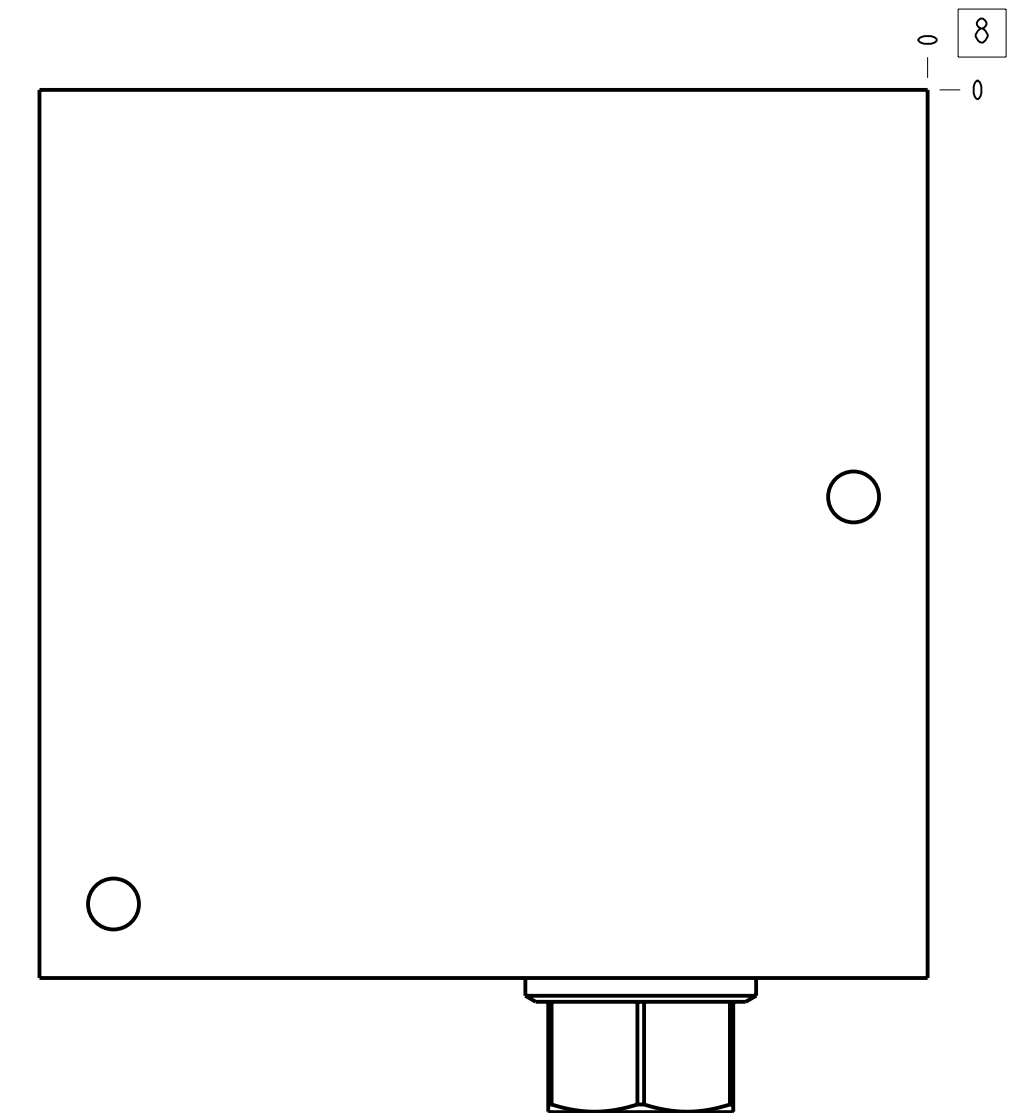
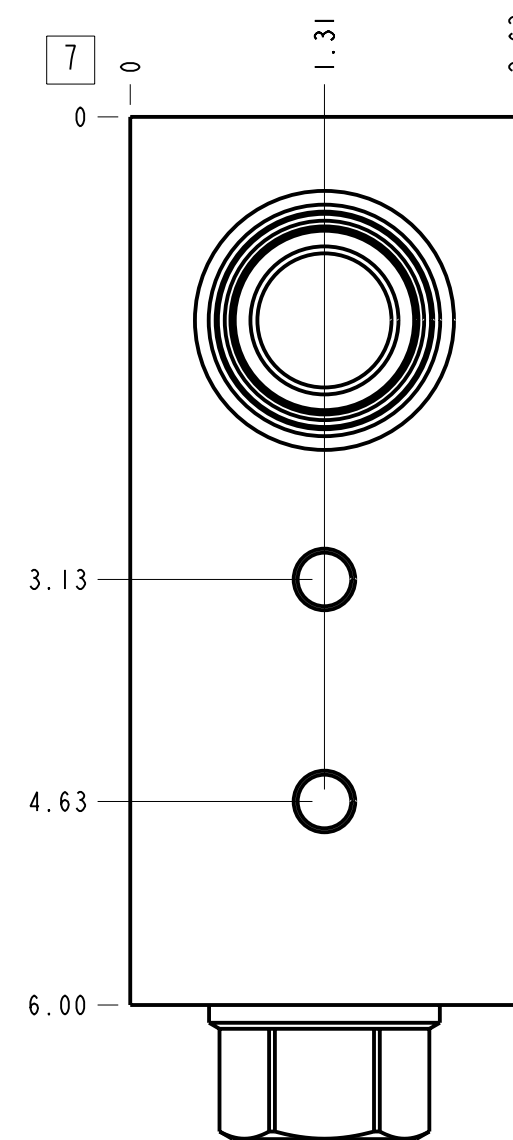
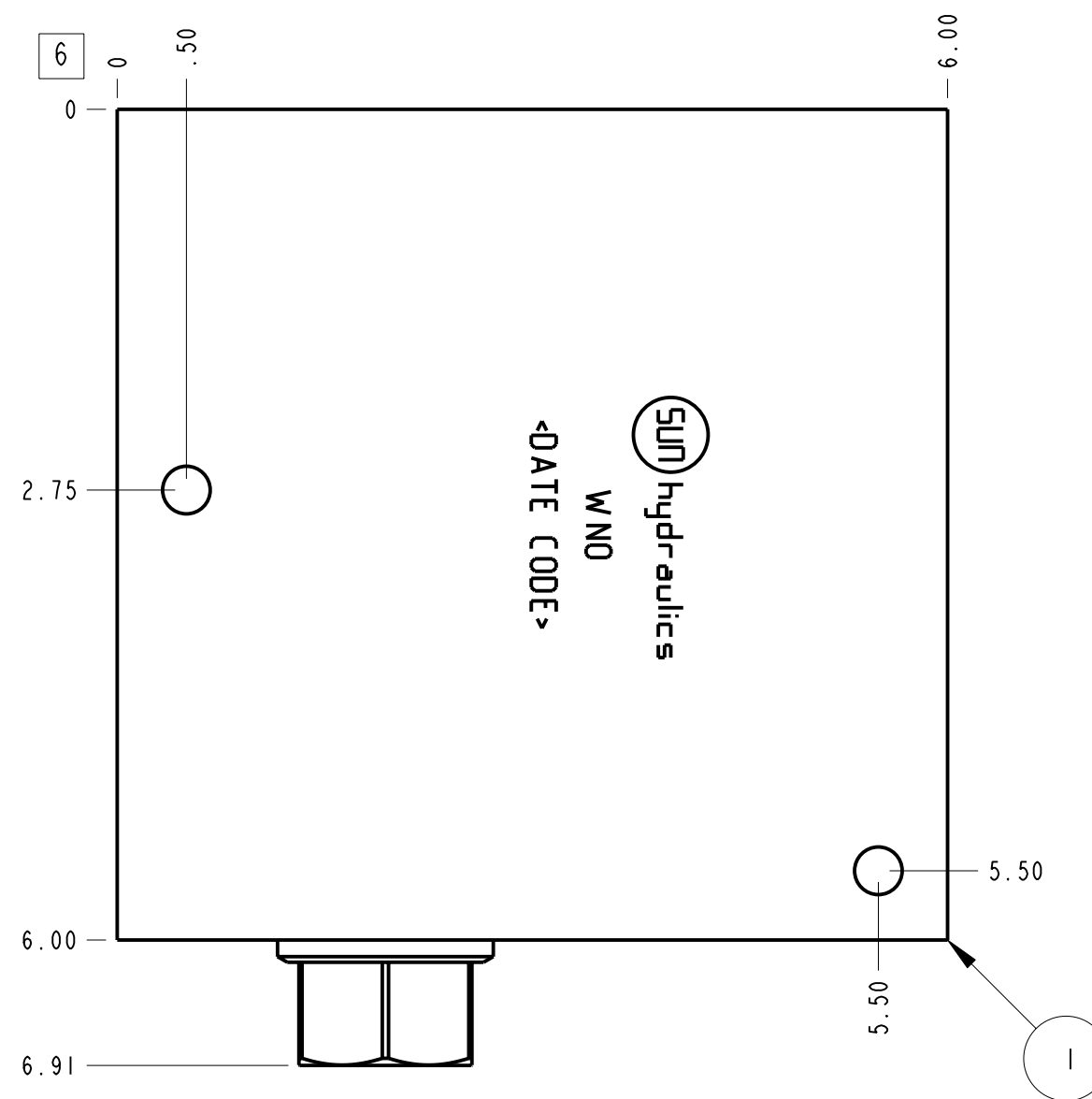
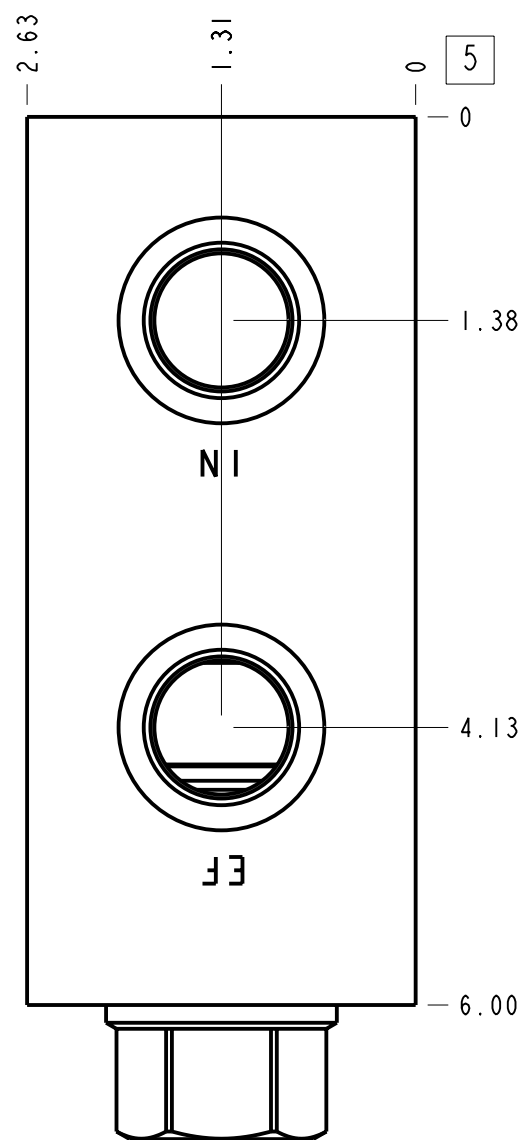
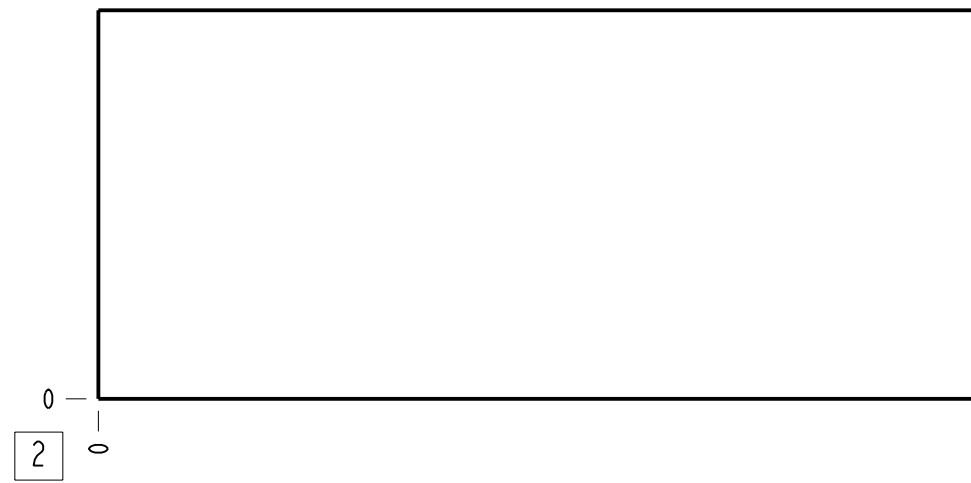


| Technical Data                 | U.S. Units                    | Metric Units |
|--------------------------------|-------------------------------|--------------|
| Cavity                         | T-16A                         |              |
| Body Features                  | With bypass compensator       |              |
| Body Type                      | Line mount                    |              |
| Interface                      | None                          |              |
| Open Cavity Quantity           | 1                             |              |
| Weight                         | 8.804 lb.                     | 3,993 kg.    |
| Mounting Hole Diameter         | .34 in.                       | 8.6 mm       |
| Mounting Hole Thread           | M10x1.5 - 6H                  |              |
| Mounting Hole Depth            | .62 in.                       | 15,7 mm      |
| Mounting Hole Quantity         | 2                             |              |
| Includes integral cartridge(s) | Yes (see Included Components) |              |



Notes

- Important: Carefully consider the maximum system pressure. The pressure rating of the manifold is dependent on the manifold material, with the port type/size a secondary consideration. Manifolds constructed of aluminum are not rated for pressures higher than 3000 psi (210 bar), regardless of the port type/size specified.
- This drawing is for reference only. It is generated by an automated process and does not fall under Sun's document control process.

| Port Headings |               |           |
|---------------|---------------|-----------|
| Product       | Port          | Size      |
| WNO           | Ports IN & EF | 3/4" BSPP |
| WNO           | Port CF       | 1/2" BSPP |

|  |              |         |                   |   |               |
|--|--------------|---------|-------------------|---|---------------|
| 2  | LRHC-XHN     |         |                   | MODULATING ELEMENT VALVE                        | 1             |
| 1  | 152-437-007  |         | 6061-T6 ALUMINUM  | BODY  | 1             |
| ITEM   | PART NO.     | SETTING | MATERIAL          | PART NAME                                       | QTY           |
|  | MODEL<br>WNO |         |                   | ALL DIMENSIONS IN INCH<br>VIEWS ARE THIRD ANGLE |               |
| DESCRIPTION<br>T-16A Line mount<br>With bypass compensator |              |         | DATE<br>Apr-12-24 | SCALE<br>0.771                                  | DWG SIZE<br>C |
|  |              |         | SHEET<br>1        | <br>  |               |