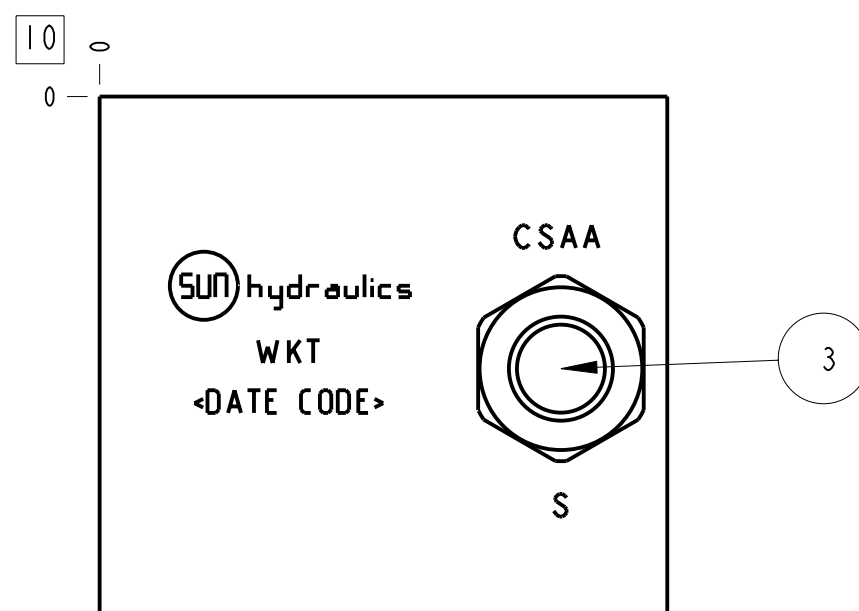
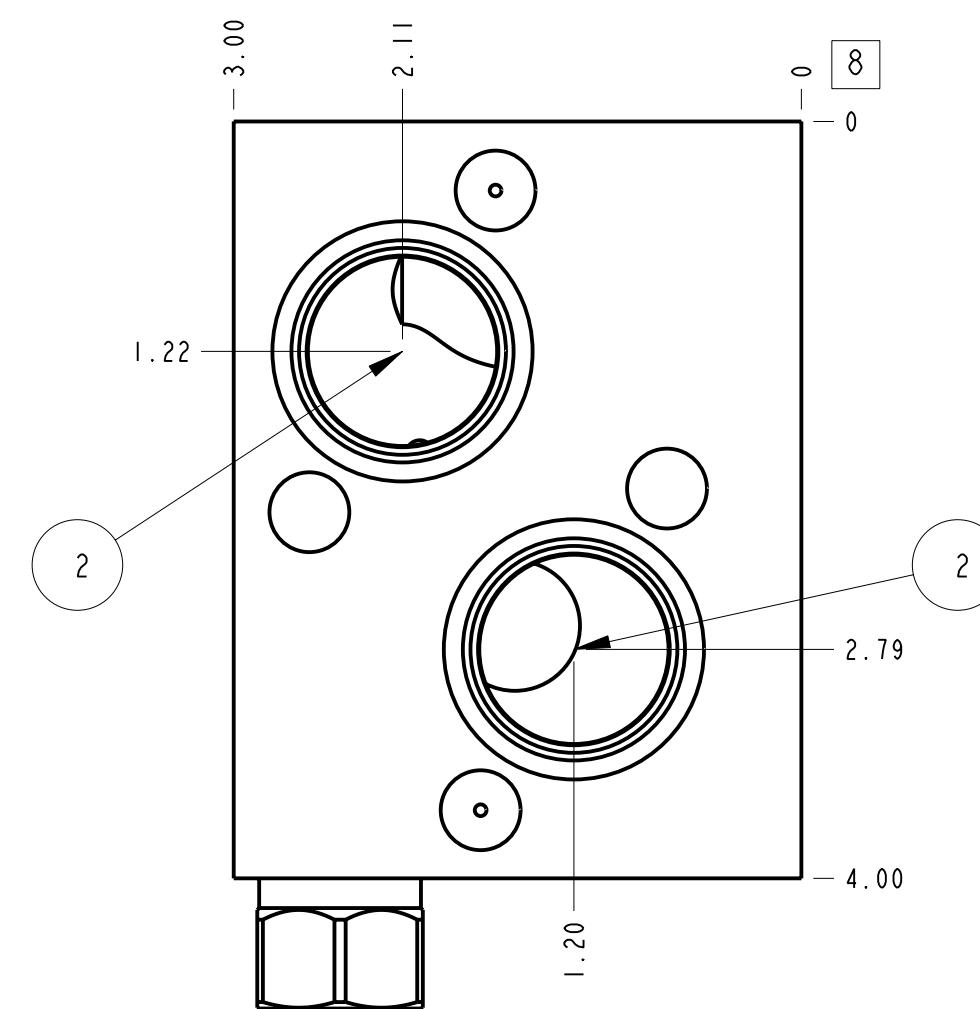
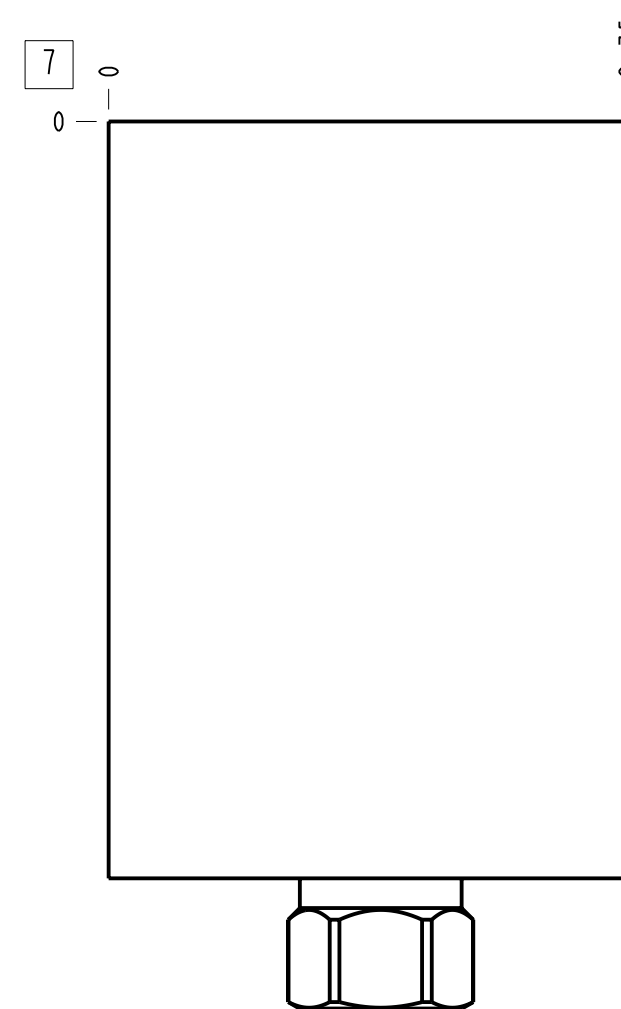
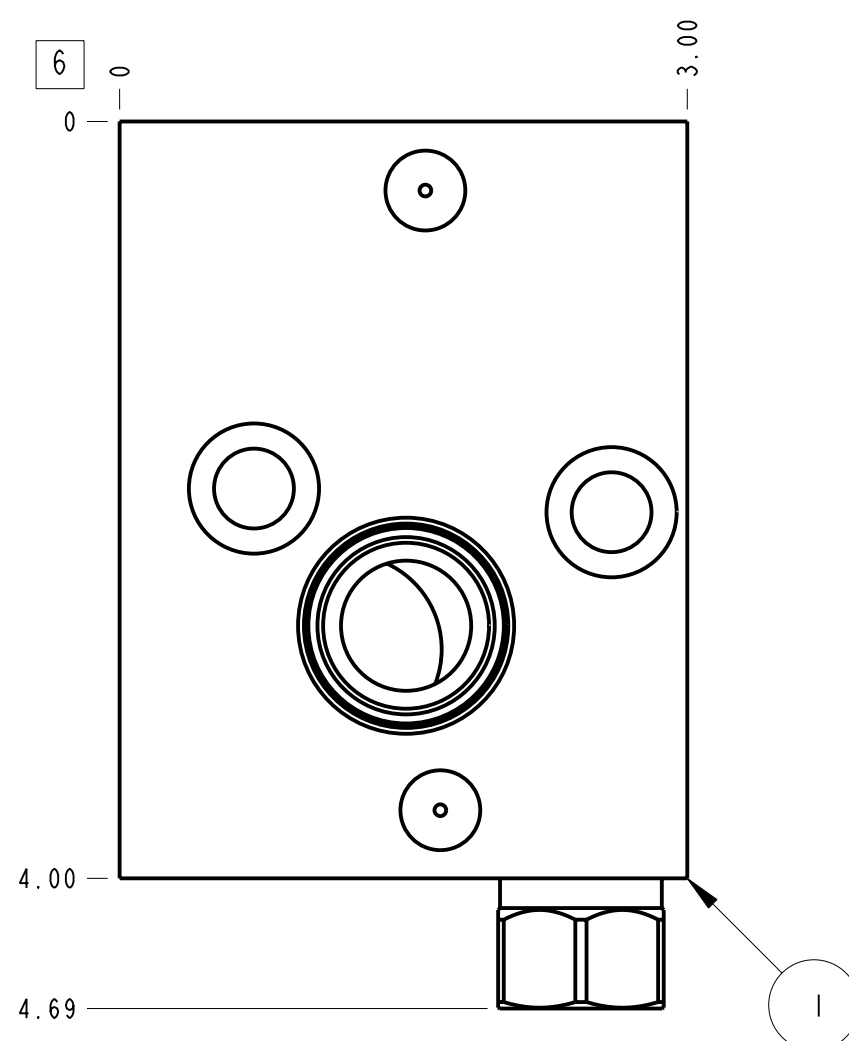
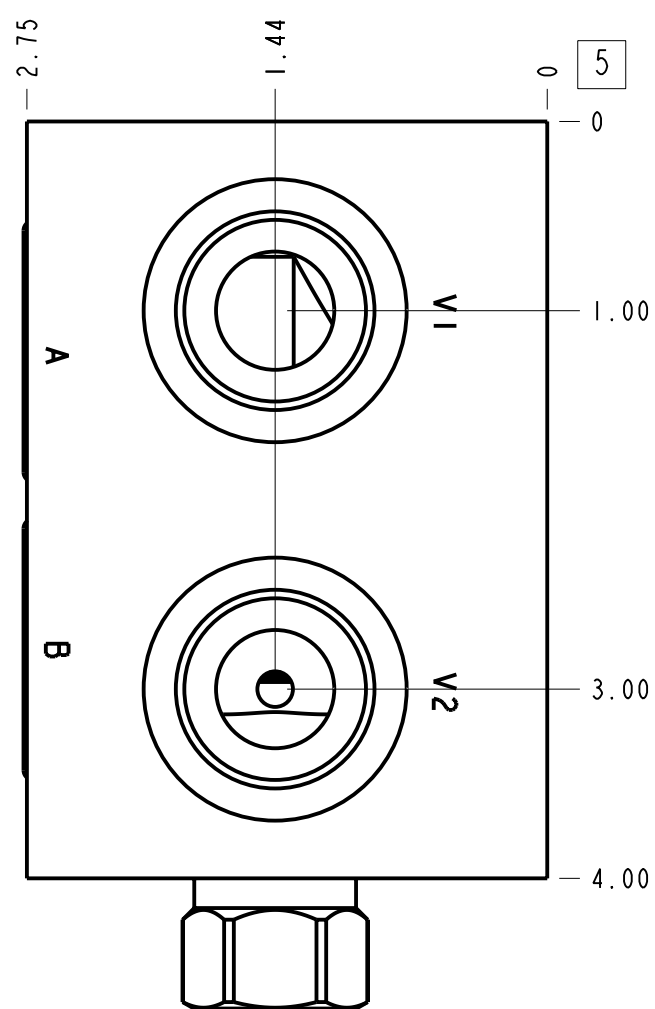
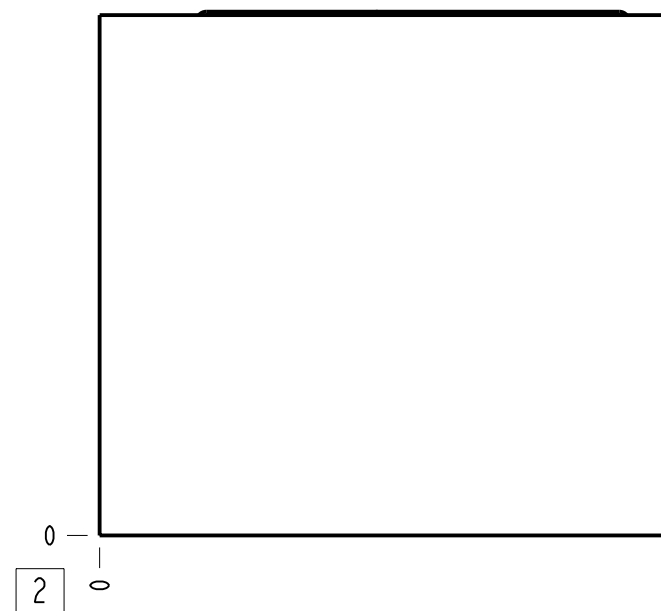


Technical Data	U.S. Units	Metric Units
Cavity	T-2A	
Body Features	Cross pilot on B with shuttle	
Body Type	Motor mount	
Interface	Danfoss OMT	
Open Cavity Quantity	1	
Weight	2.687 lb.	1,219 kg.
Includes integral cartridge(s)	Yes (see Included Components)	



**Notes**

1. Important: Carefully consider the maximum system pressure. The pressure rating of the manifold is dependent on the manifold material, with the port type/size a secondary consideration. Manifolds constructed of aluminum are not rated for pressures higher than 3000 psi (210 bar), regardless of the port type/size specified.
2. This drawing is for reference only. It is generated by an automated process and does not fall under Sun's document control process.

Port Headings		
Product	Port	Size
WKT	Ports V1 & V2	3/4" BSPP
WKT	Shuttle Port	1/4" BSPP

3	CSAABXN			SHUTTLE VALVE	1
2	500-001-123		N-0674-70	O-RING	2
1	159-345-003		6061-T6 ALUMINUM	BODY	1
I T E M	PART NO.	SETTING	MATERIAL	PART NAME	Q T Y

MODEL		WKT		ALL DIMENSIONS IN INCH VIEWS ARE THIRD ANGLE		FIRST ANGLE		THIRD ANGLE	
DESCRIPTION		DATE	SCALE	DWG SIZE	SHEET				
T-2A Motor mount Danfoss OMT Cross pilot on B with shuttle		Jul-25-23	0.986	C	1				