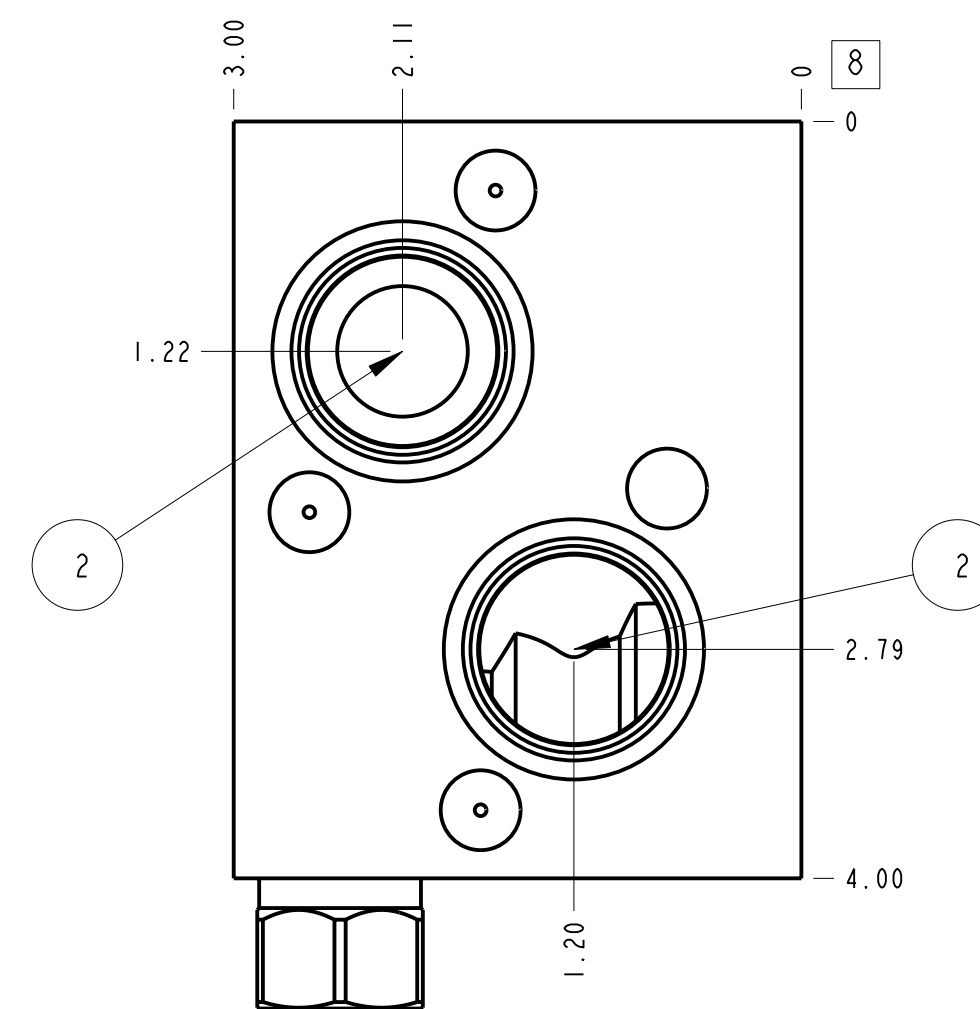
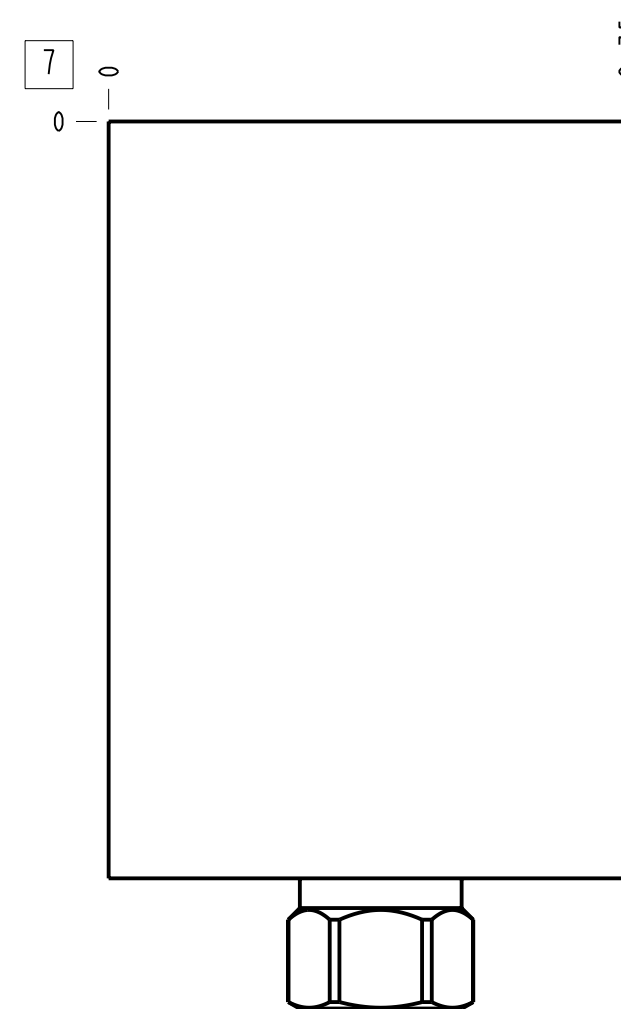
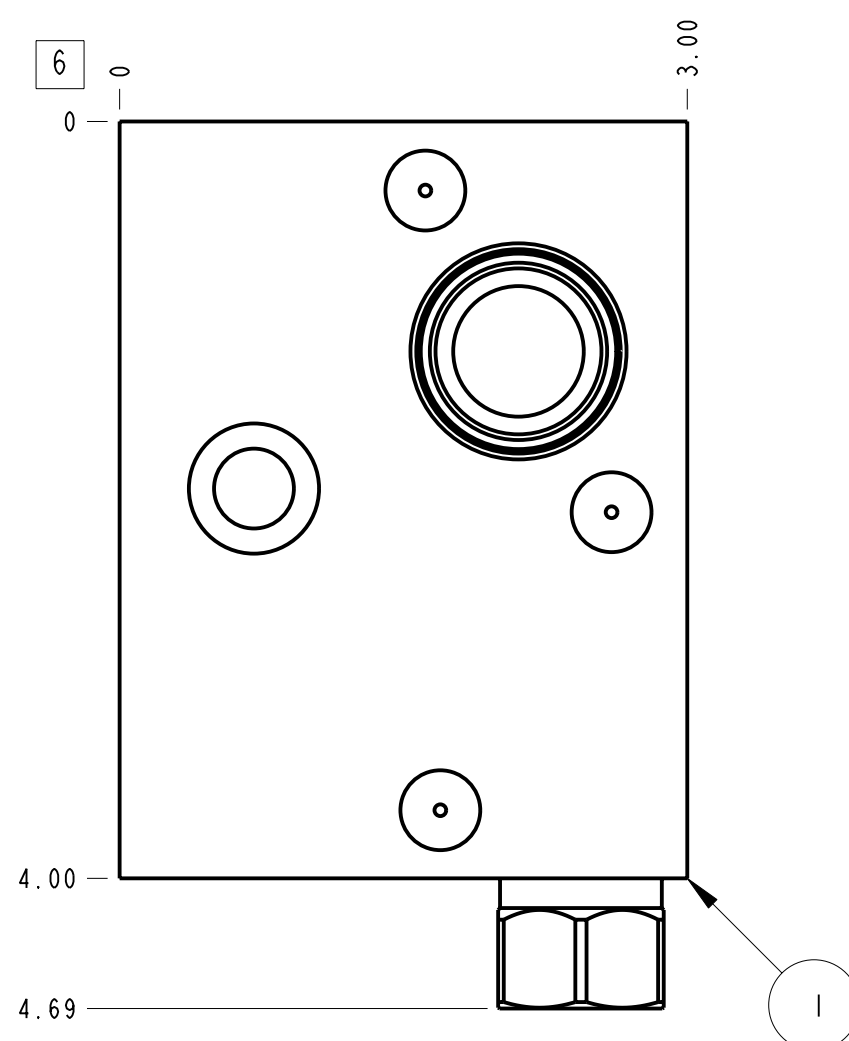
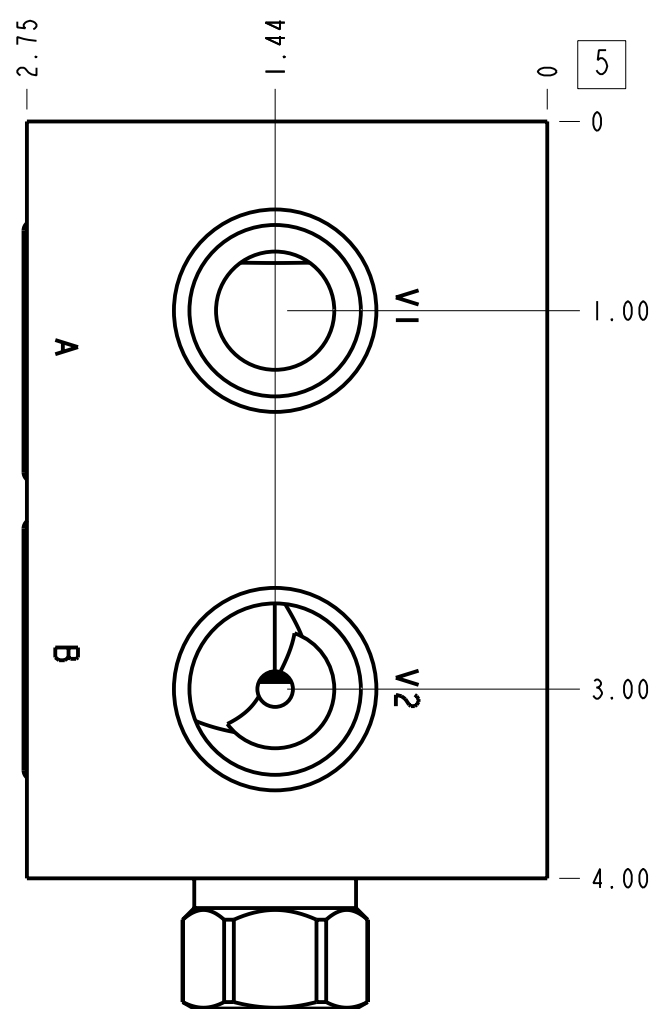
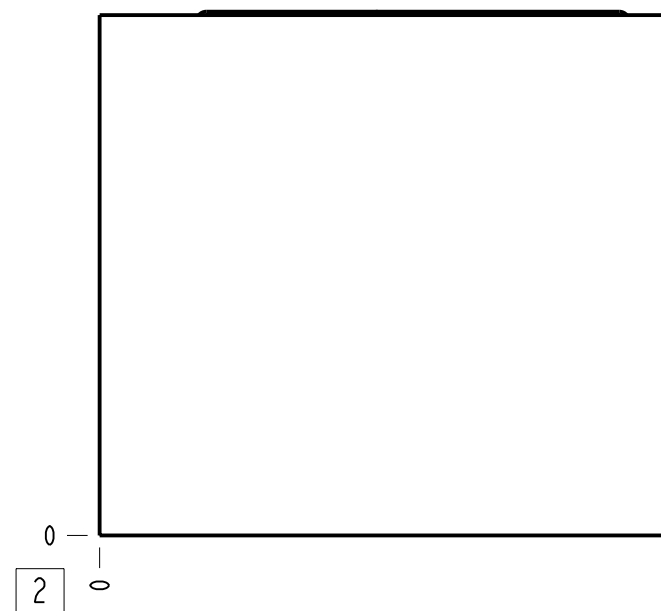
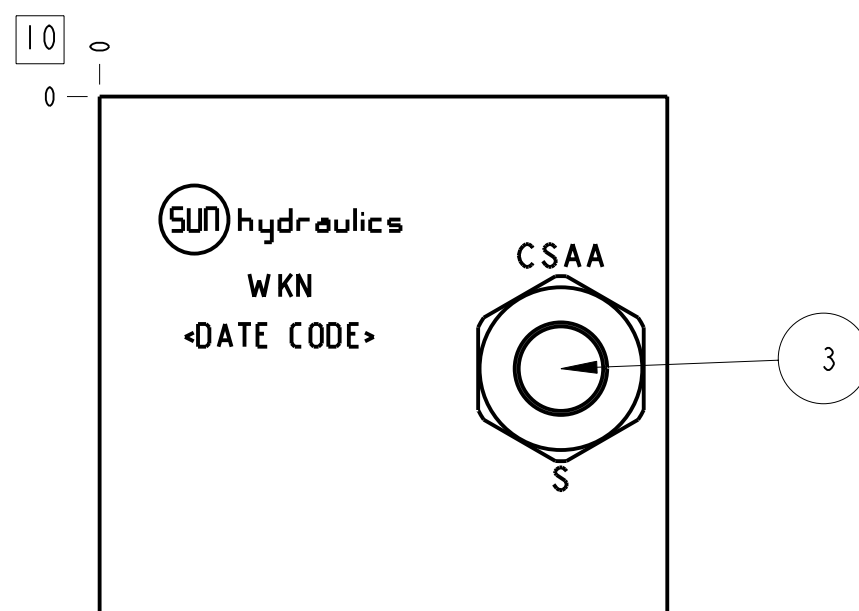


Technical Data	U.S. Units	Metric Units
Cavity	T-2A	
Body Features	Cross pilot on A with shuttle	
Body Type	Motor mount	
Interface	Danfoss OMT	
Open Cavity Quantity	1	
Weight	2.733 lb.	1,240 kg.
Includes integral cartridge(s)	Yes (see Included Components)	



**Notes**

- Important: Carefully consider the maximum system pressure. The pressure rating of the manifold is dependent on the manifold material, with the port type/size a secondary consideration. Manifolds constructed of aluminum are not rated for pressures higher than 3000 psi (210 bar), regardless of the port type/size specified.
- This drawing is for reference only. It is generated by an automated process and does not fall under Sun's document control process.



Port Headings		
Product	Port	Size
WKN	Ports V1 & V2	3/4" NPTF
WKN	Port S	SAE 4

3	CSAAEXN			SHUTTLE VALVE	1
2	500-001-123		N-0674-70	O-RING	2
1	159-344-001		6061-T6 ALUMINUM	BODY	1
ITEM	PART NO.	SETTING	MATERIAL	PART NAME	QTY

MODEL		WKN		ALL DIMENSIONS IN INCH VIEWS ARE THIRD ANGLE		FIRST ANGLE		THIRD ANGLE	
DESCRIPTION		DATE	SCALE	DWG SIZE	SHEET				
T-2A Motor mount Danfoss OMT Cross pilot on A with shuttle		Jul-26-23	0.986	C	1				