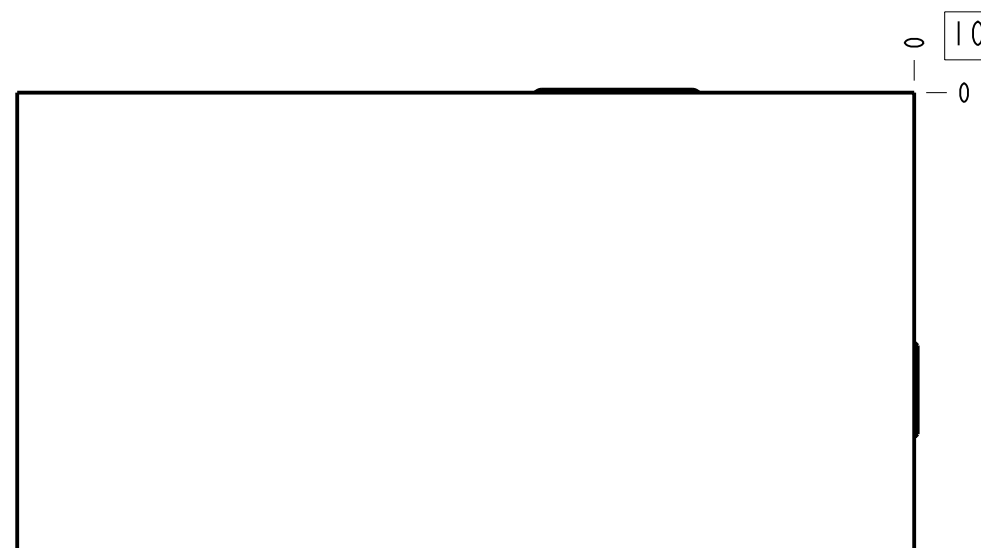
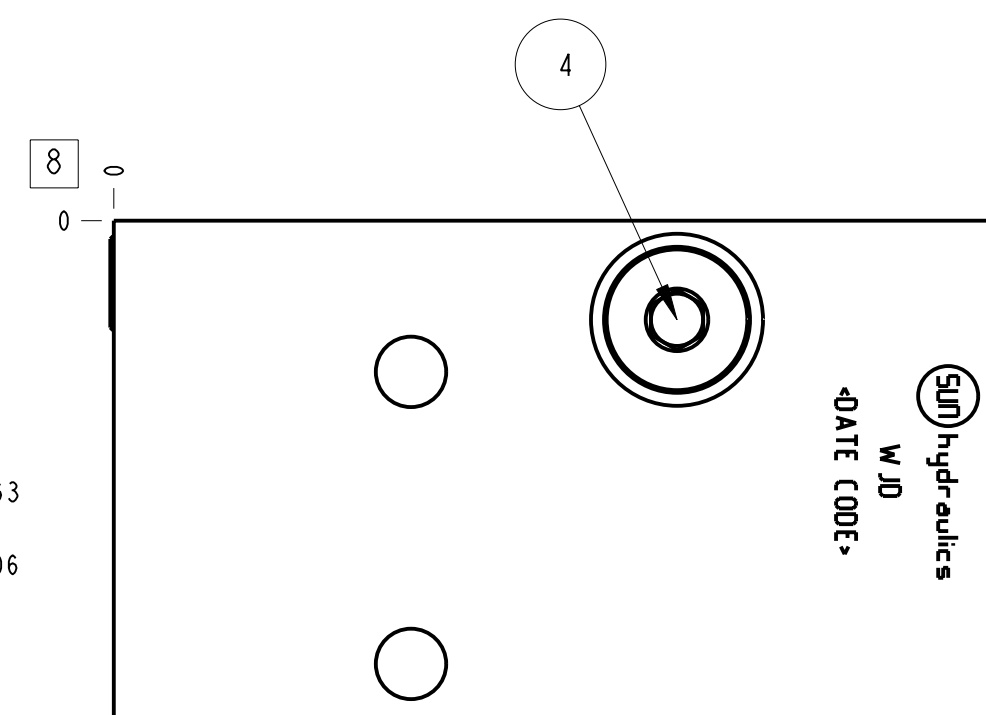
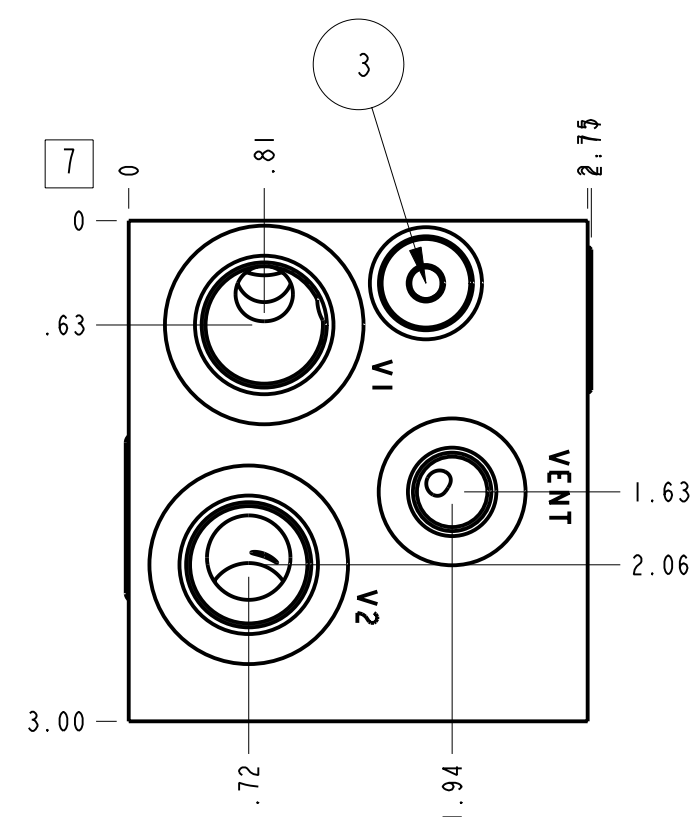
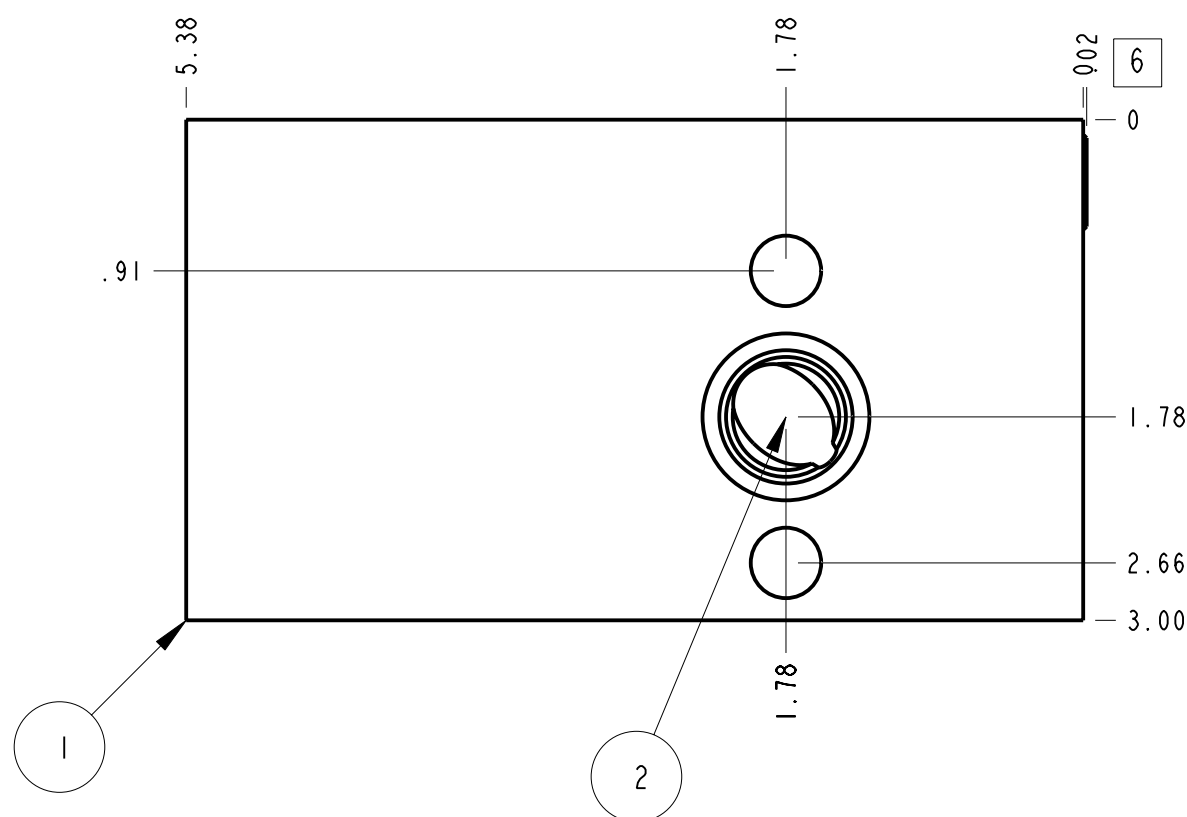
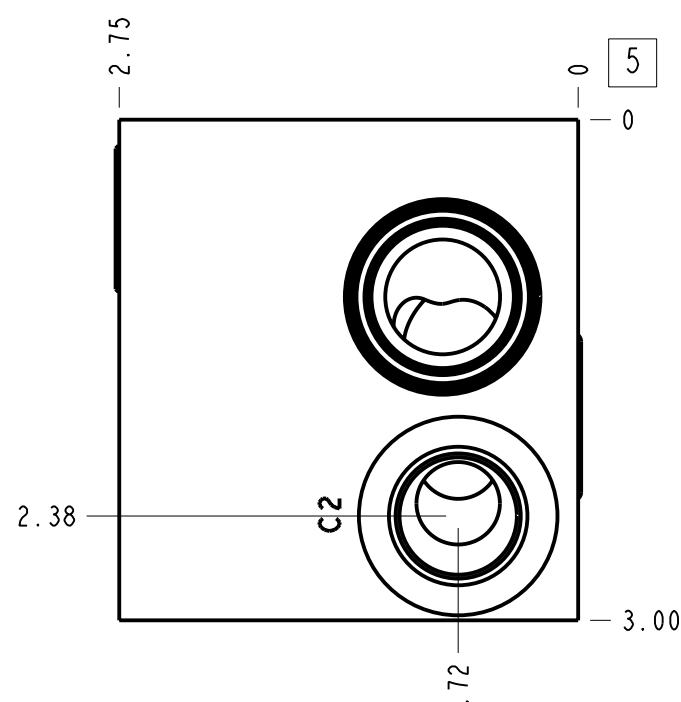


Technical Data	U.S. Units	Metric Units
Cavity	T-22A	
Body Features	Direct mount, cross pilot	
Body Type	Gasket mount	
Interface	Sun	
Open Cavity Quantity	1	
Weight	3.669 lb.	1,664 kg.



**Notes**

- Important: Carefully consider the maximum system pressure. The pressure rating of the manifold is dependent on the manifold material, with the port type/size a secondary consideration. Manifolds constructed of aluminum are not rated for pressures higher than 3000 psi (210 bar), regardless of the port type/size specified.
- This drawing is for reference only. It is generated by an automated process and does not fall under Sun's document control process.

Port Headings		
Product	Port	Size
WJD	Ports C2, V1, V2	1/2" BSPP
WJD	Vent Port	1/4" BSPP

4	A330-006-008		SAE-8 PLUG	1	
3	A330-006-004		SAE-4 PLUG	1	
2	500-001-117	N-0674-70	O-RING	1	
1	152-578-003	6061-T6 ALUMINUM	BODY	1	
ITEM	PART NO.	SETTING	MATERIAL	PART NAME	QTY

MODEL		WJD		ALL DIMENSIONS IN INCH VIEWS ARE THIRD ANGLE		FIRST ANGLE		THIRD ANGLE	
DESCRIPTION		DATE	SCALE	DWG SIZE	SHEET				
T-22A Gasket mount Sun Direct mount, cross pilot		Mar-18-24	0.869	C	1				