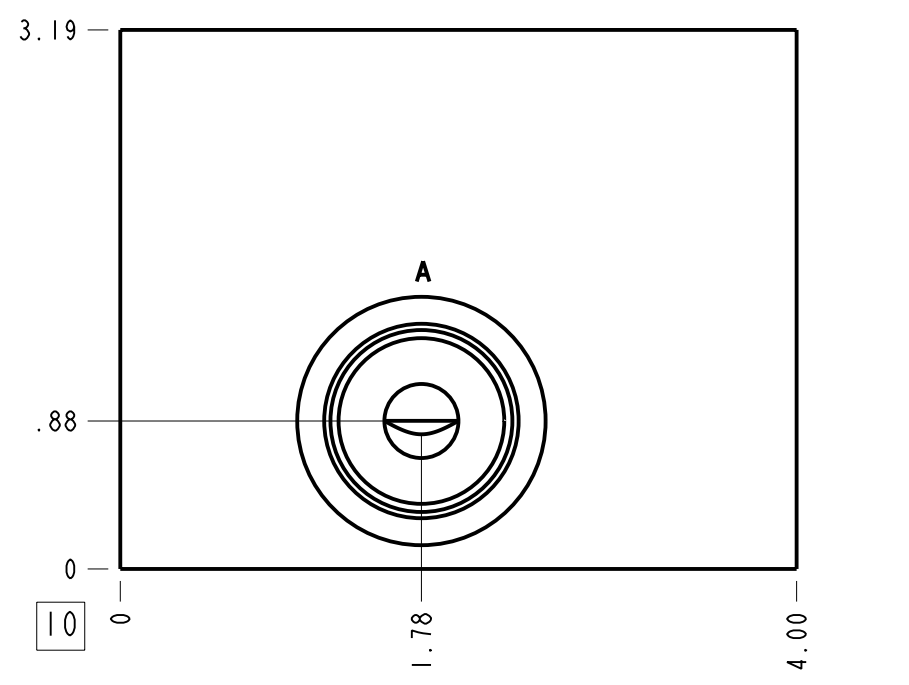
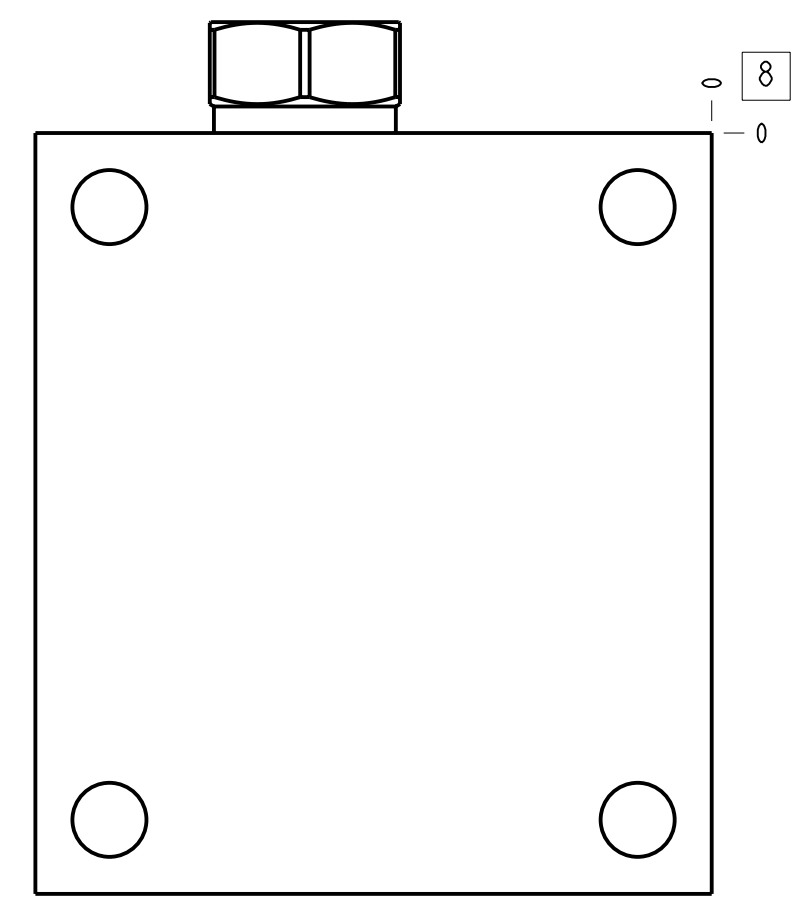
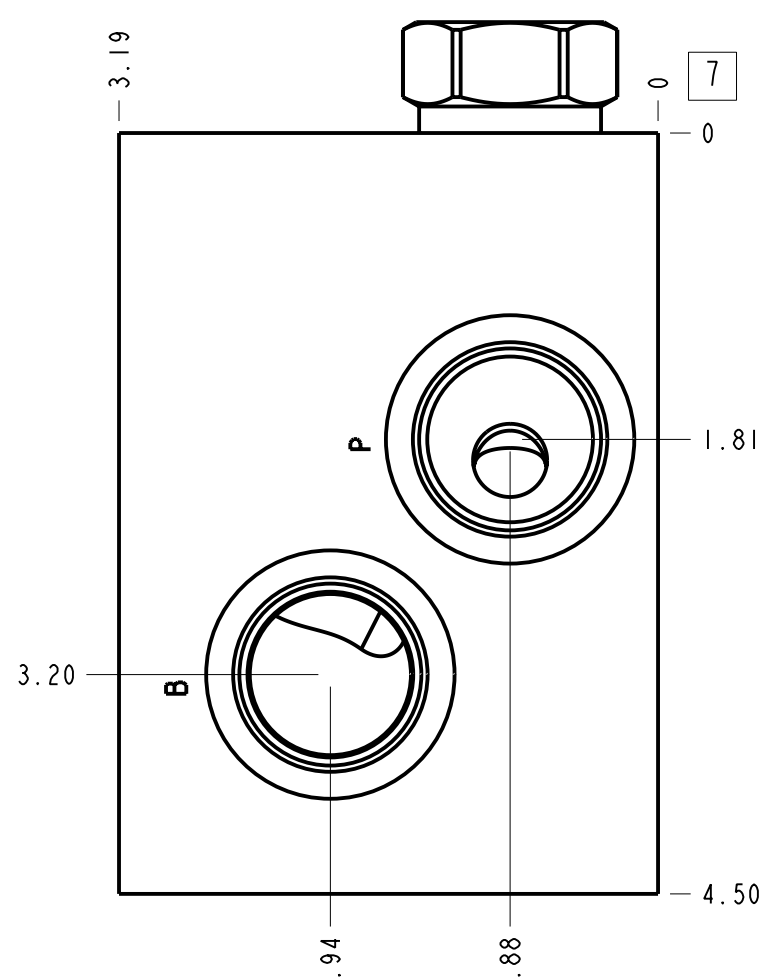
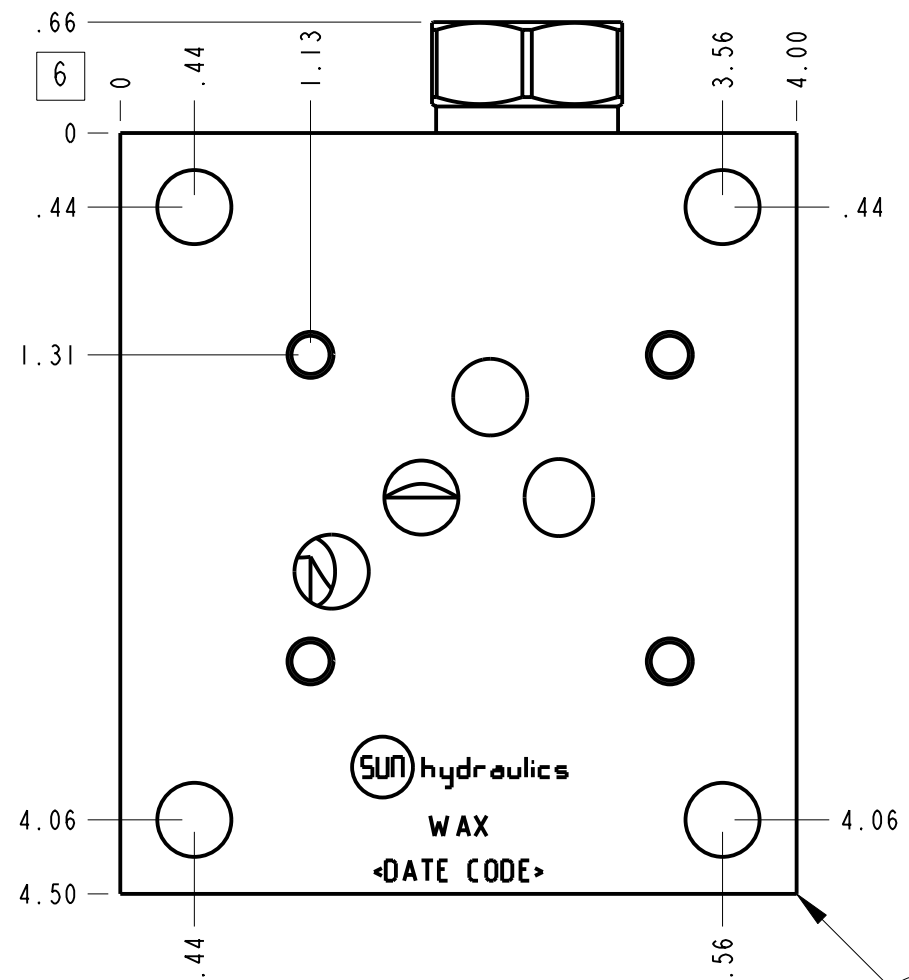
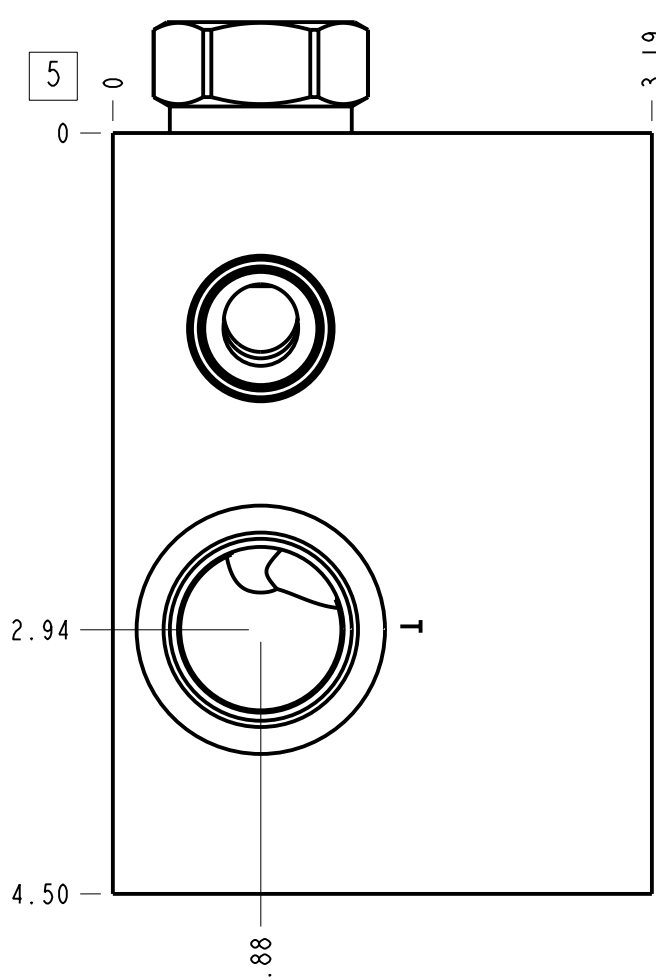


Technical Data	U.S. Units	Metric Units
Cavity		T-10A
Body Features	P to T, check on P, side ports	
Body Type	Subplate	
Interface	ISO 05	
Open Cavity Quantity	1	
Weight	5.102 lb.	2,314 kg.
Mounting Hole Diameter	.44 in.	11,1 mm
Mounting Hole Depth	Through	
Mounting Hole Quantity	4	
Includes integral cartridge(s)	Yes (see Included Components)	



- Notes**
- Important: Carefully consider the maximum system pressure. The pressure rating of the manifold is dependent on the manifold material, with the port type/size a secondary consideration. Manifolds constructed of aluminum are not rated for pressures higher than 3000 psi (210 bar), regardless of the port type/size specified.
 - This drawing is for reference only. It is generated by an automated process and does not fall under Sun's document control process.

Port Headings		
Product	Port	Size
WAX	Ports A, B, P, T	SAE 12
WAX	Port G	1/4" NPTF

3	CXFA-XCN			CHECK VALVE	1
2	340-003			PLUG-.250-18 NPTF	1
1	152-887-005		6061-T6 ALUMINUM	BODY	1
ITEM	PART NO.	SETTING	MATERIAL	PART NAME	QTY
	MODEL				
DESCRIPTION			ALL DIMENSIONS IN INCH VIEWS ARE THIRD ANGLE		
T-10A Subplate ISO 05 P to T, check on P, side ports			DATE	SCALE	DWG SIZE SHEET
			Aug-10-23	0.881	C 1

