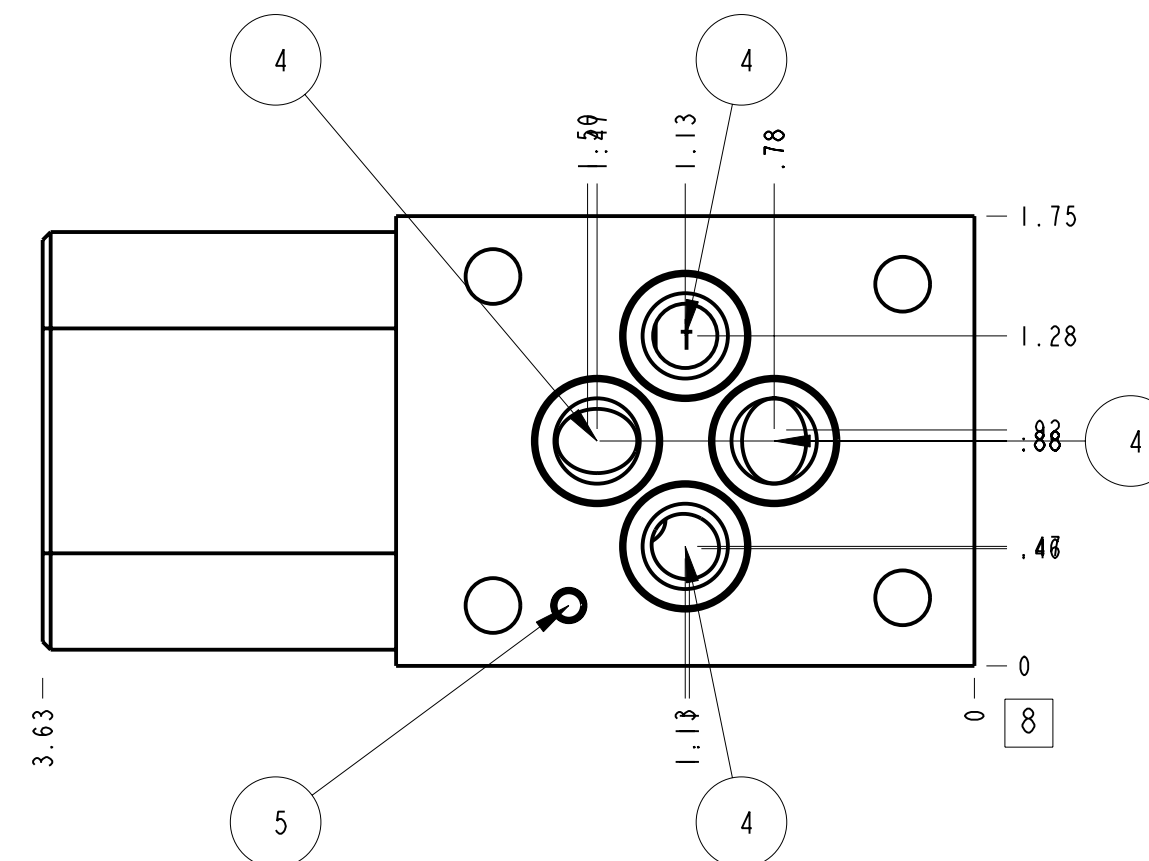
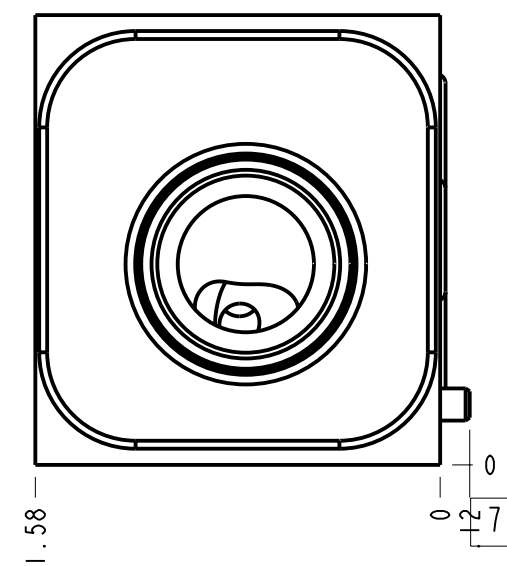
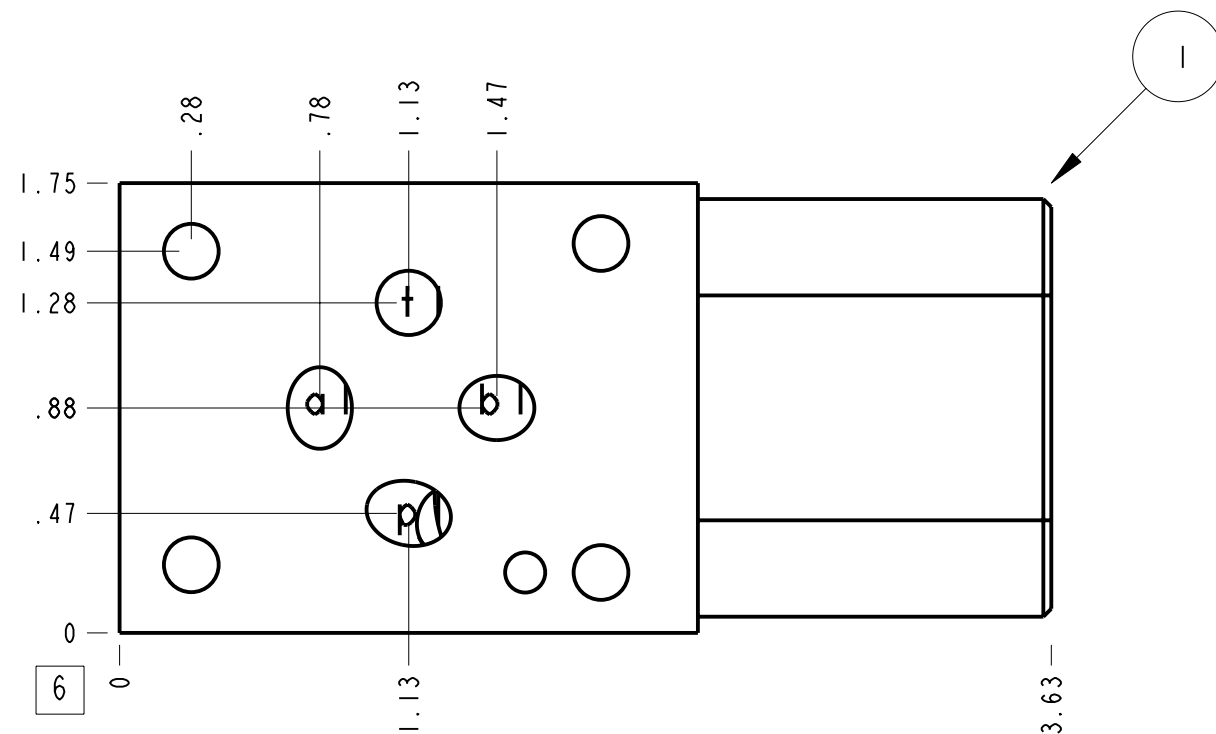
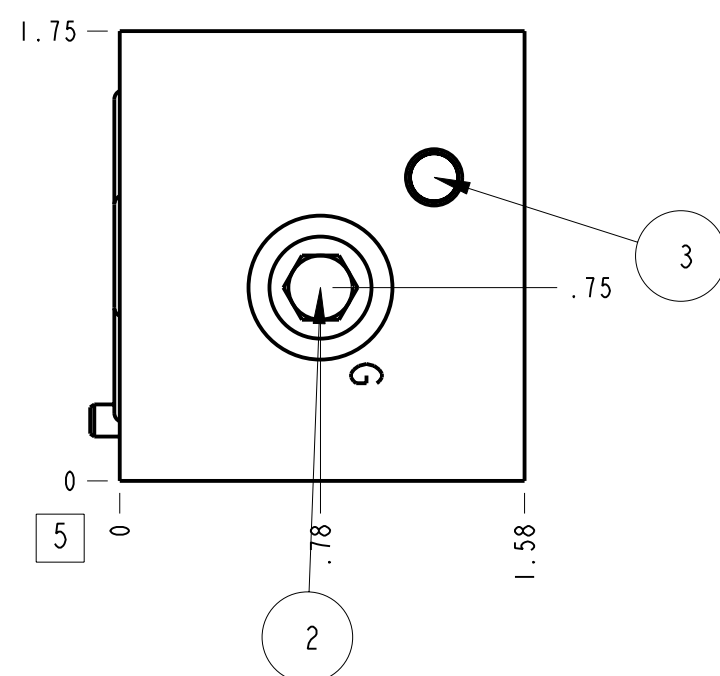
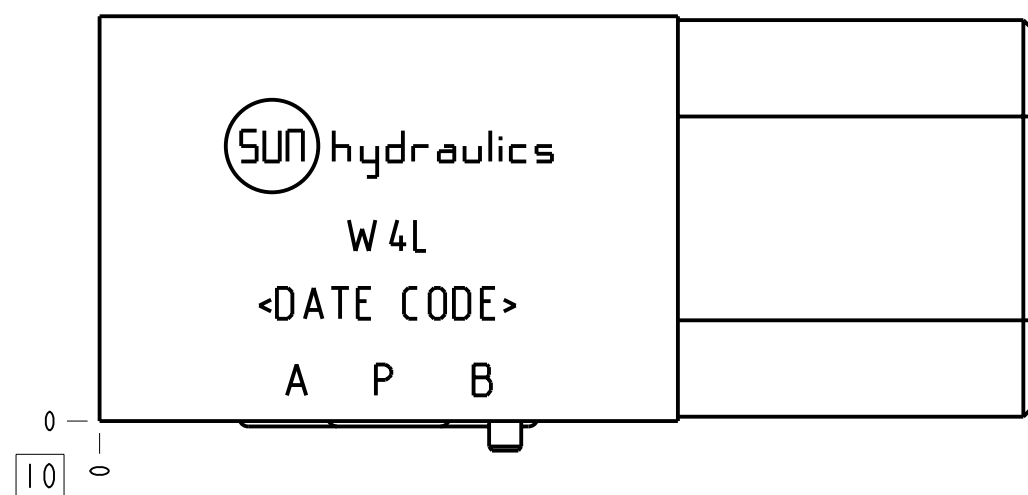


Technical Data	U.S. Units	Metric Units
Cavity		T-11A
Body Features		On P, port 3 to T
Body Type		Sandwich
Interface		ISO 03 - 40mm
Open Cavity Quantity		1
Stack Height	1.58 in.	40 mm
Weight	0.761 lb.	0,345 kg.
Seal Plate Included (see notes)		No



**Notes**

1. Important: Carefully consider the maximum system pressure. The pressure rating of the manifold is dependent on the manifold material, with the port type/size a secondary consideration. Manifolds constructed of aluminum are not rated for pressures higher than 3000 psi (210 bar), regardless of the port type/size specified.
2. Seal retainer plate is not required for this model.
3. This drawing is for reference only. It is generated by an automated process and does not fall under Sun's document control process.



Port Headings		
Product	Port	Size
W4L	Gage Port (Plugged)	1/4" NPTF

5	811-001-006		LOW CARBON STEEL	MACHINED PART	1
4	500-001-012		N-0674-70	O-RING	4
3	850-004-218			KOENIG EXPANDER PLUGS	1
2	340-003			PLUG-.250-18 NPTF	1
1	158-772-001		6061-T6 ALUMINUM	BODY	1
ITEM	PART NO.	SETTING	MATERIAL	PART NAME	QTY

MODEL	W4L		ALL DIMENSIONS IN INCH VIEWS ARE THIRD ANGLE		FIRST ANGLE	THIRD ANGLE
DESCRIPTION	T-11A Sandwich ISO 03 - 40mm On P, port 3 to T		DATE	SCALE	DWG SIZE	SHEET
			Jun-27-23	1.339	C	1

