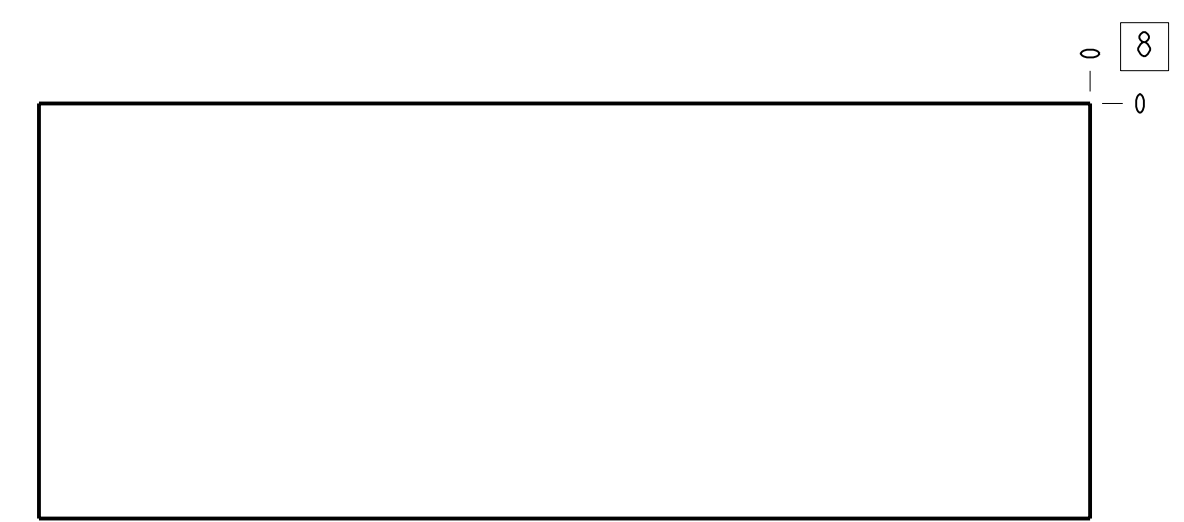
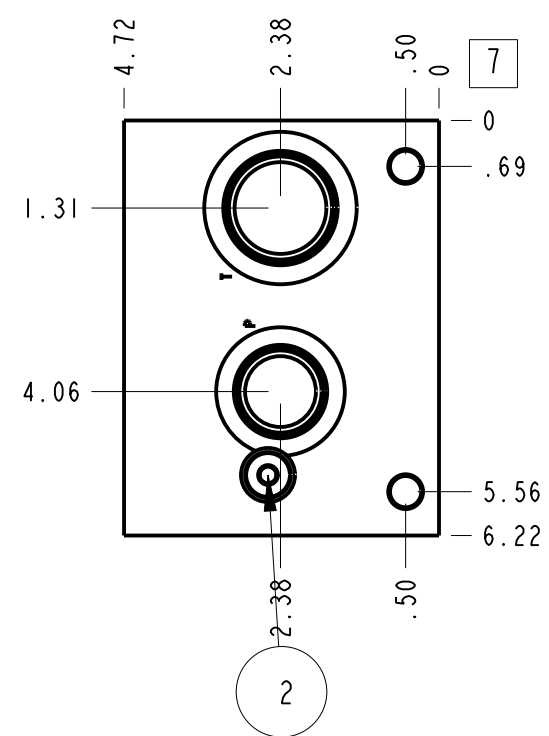
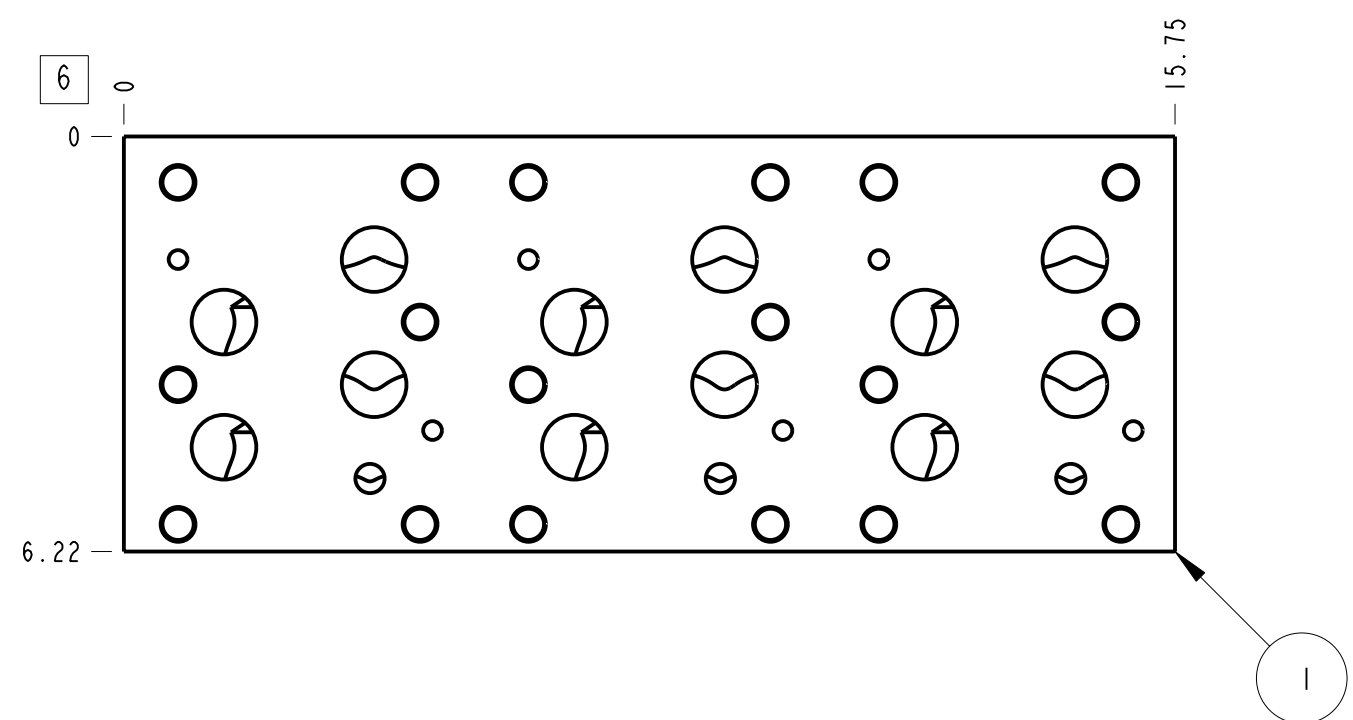
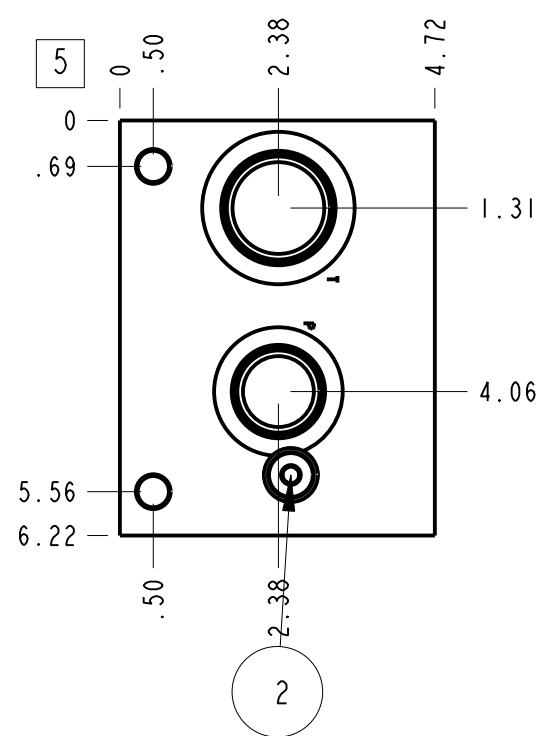
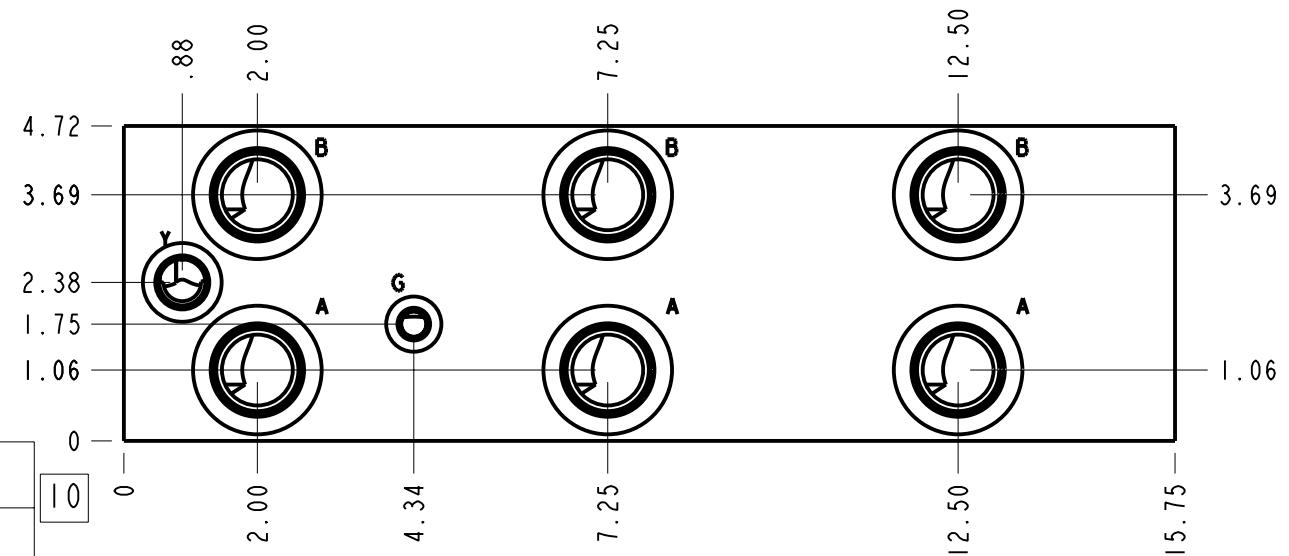


Technical Data	U.S. Units	Metric Units
Cavity	T-3A	
Body Features	3 Station, Parallel circuit with relief cavity	
Body Type	Bar Manifold	
Interface	ISO 08	
Open Cavity Quantity	1	
Weight	36.484 lb.	16,549 kg.
Mounting Hole Thread	.500-13 UNC - 2B in.	
Mounting Hole Depth	.88 in.	22,4 mm
Mounting Hole Quantity	4	



- Notes**
- For mounting bracket information see catalog or drawing 991-021-\*\*\*
  - Important: Carefully consider the maximum system pressure. The pressure rating of the manifold is dependent on the manifold material, with the port type/size a secondary consideration. Manifolds constructed of aluminum are not rated for pressures higher than 3000 psi (210 bar), regardless of the port type/size specified.
  - ISO 08 Sandwich pattern mounting holes: .500-13 UNC x 1.16 DP, typical 18 places
  - This drawing is for reference only. It is generated by an automated process and does not fall under Sun's document control process.



Port Headings		
Product	Port	Size
VLW	Ports A, B, P	SAE 16
VLW	Port T	SAE 20
VLW	Gage Port	SAE 4
VLW	Port Y	SAE 8

2	A330-006-006			SAE-6 PLUG	2
1	153-234-002		6061-T6 ALUMINUM	BODY	1
ITEM	PART NO.	SETTING	MATERIAL	PART NAME	QTY
	MODEL			VLW	
DESCRIPTION			ALL DIMENSIONS IN INCH VIEWS ARE THIRD ANGLE		
T-3A Bar Manifold ISO 08 (See Technical Data for Body Features)			DATE	SCALE	DWG SIZE SHEET
			Aug-29-23	0.348	C 1

