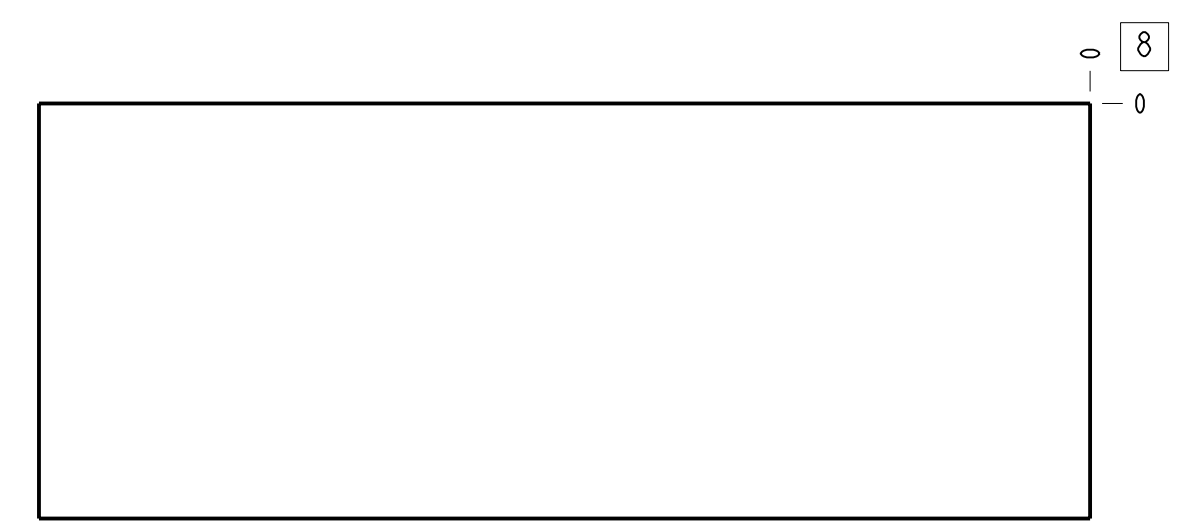
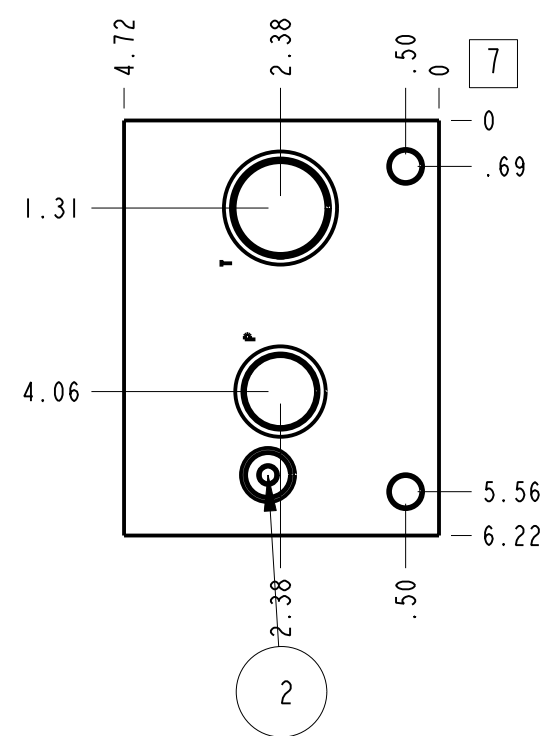
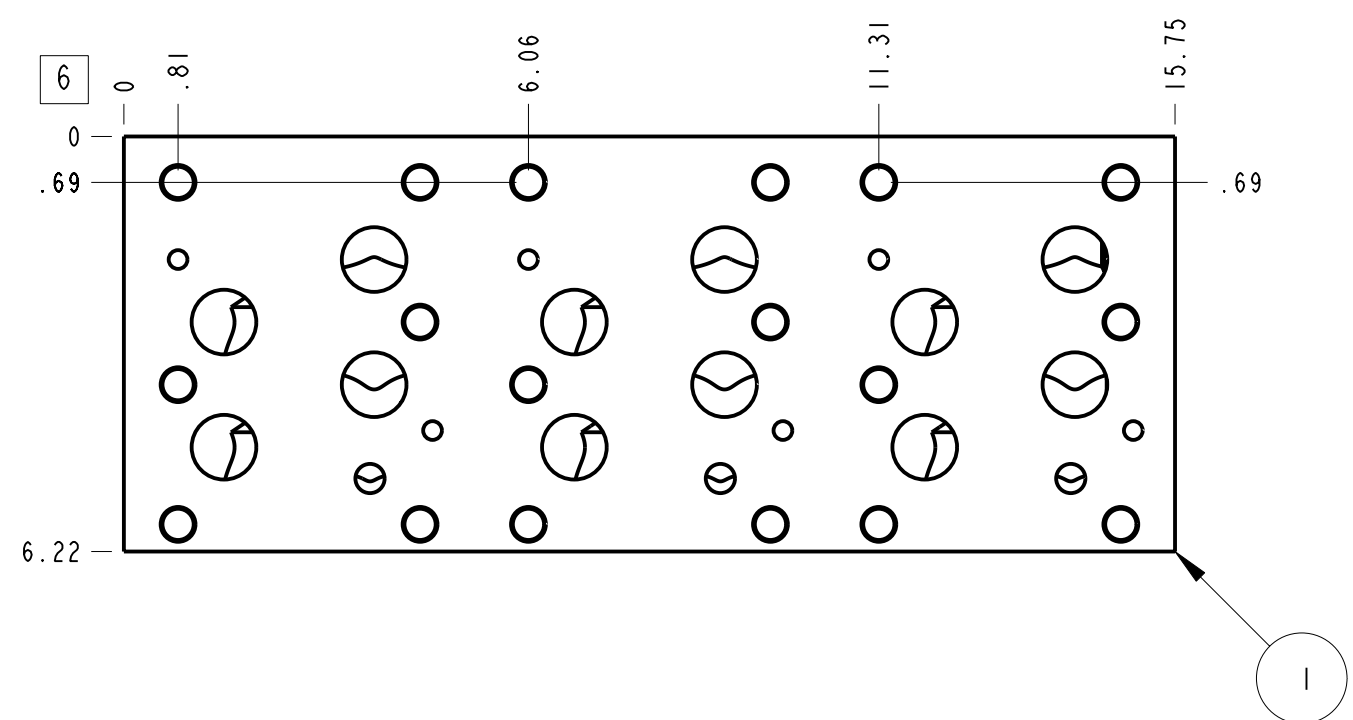
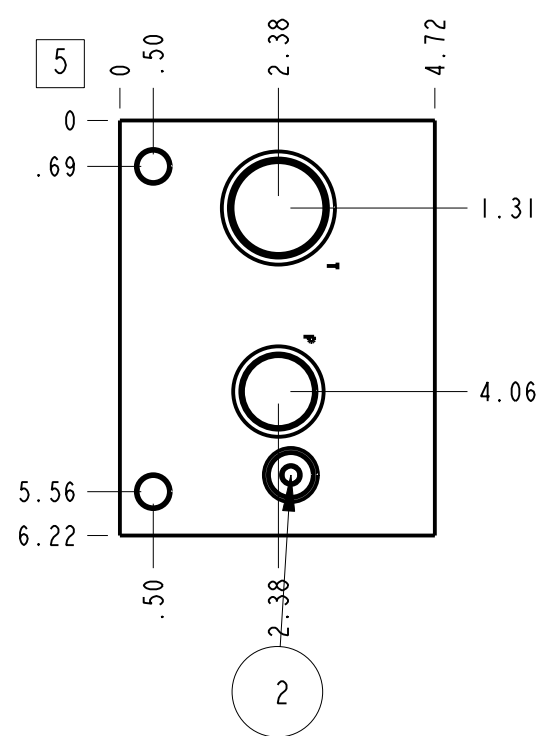
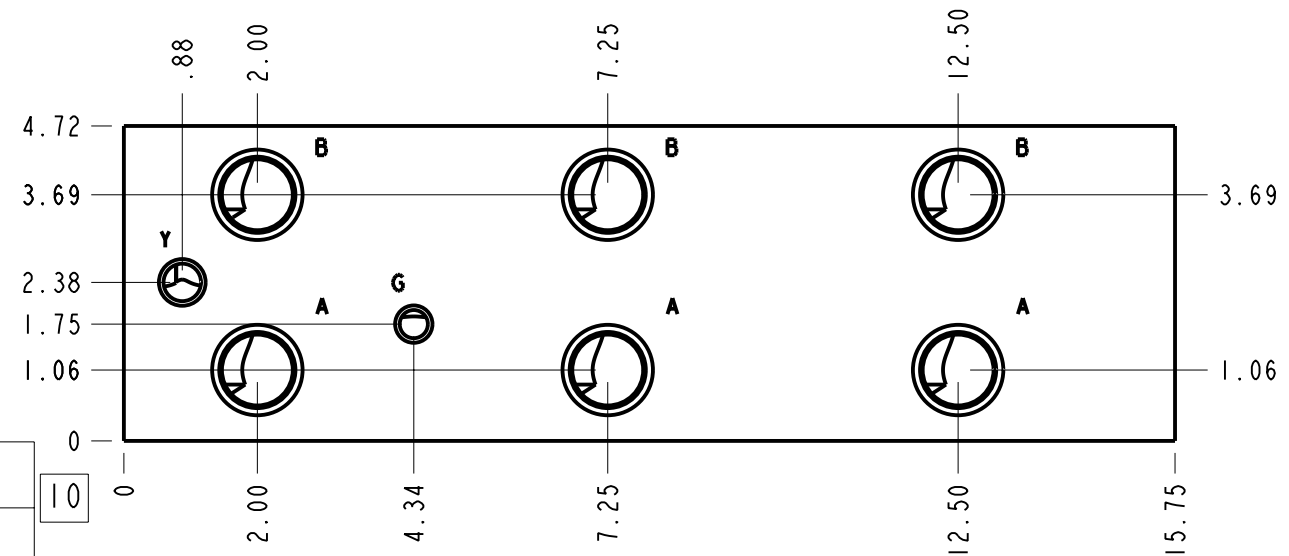


Technical Data	U.S. Units	Metric Units
Cavity	T-3A	
Body Features	3 Station, Parallel circuit with relief cavity	
Body Type	Bar Manifold	
Interface	ISO 08	
Open Cavity Quantity	1	
Weight	36.671 lb.	16,634 kg.
Mounting Hole Thread	.500-13 UNC - 2B in.	
Mounting Hole Depth	.88 in.	22,4 mm
Mounting Hole Quantity	4	



- Notes**
- For mounting bracket information see catalog or drawing 991-021-***
 - Important: Carefully consider the maximum system pressure. The pressure rating of the manifold is dependent on the manifold material, with the port type/size a secondary consideration. Manifolds constructed of aluminum are not rated for pressures higher than 3000 psi (210 bar), regardless of the port type/size specified.
 - This drawing is for reference only. It is generated by an automated process and does not fall under Sun's document control process.



Port Headings		
Product	Port	Size
VLR	Ports A, B, P	1" NPTF
VLR	Port T	1 1/4" NPTF
VLR	Gage Port	1/4" NPTF
VLR	Port Y	3/8" NPTF

2	A330-006-006		SAE-6 PLUG	2	
1	153-234-001	6061-T6 ALUMINUM	BODY	1	
ITEM	PART NO.	SETTING	MATERIAL	PART NAME	QTY
MODEL	VLR		ALL DIMENSIONS IN INCH VIEWS ARE THIRD ANGLE		FIRST ANGLE THIRD ANGLE
DESCRIPTION	T-3A Bar Manifold ISO 08 (See Technical Data for Body Features)		DATE May-28-24	SCALE 0.348	DWG SIZE C
			SHEET 1		