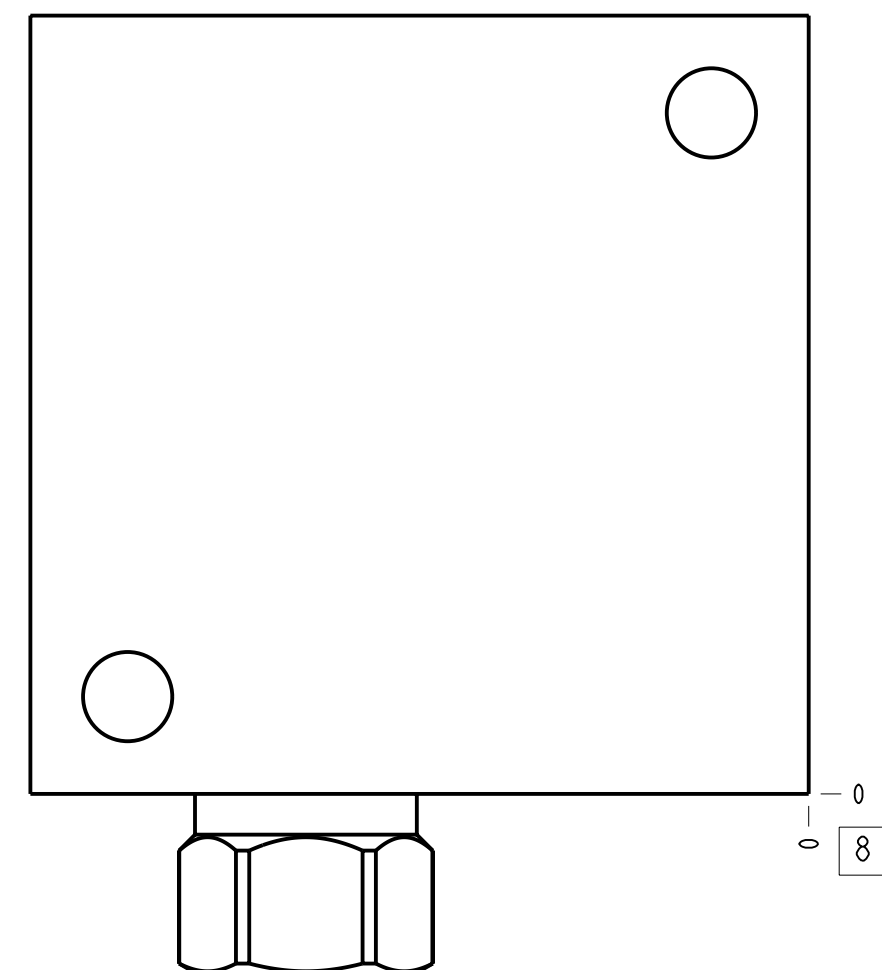
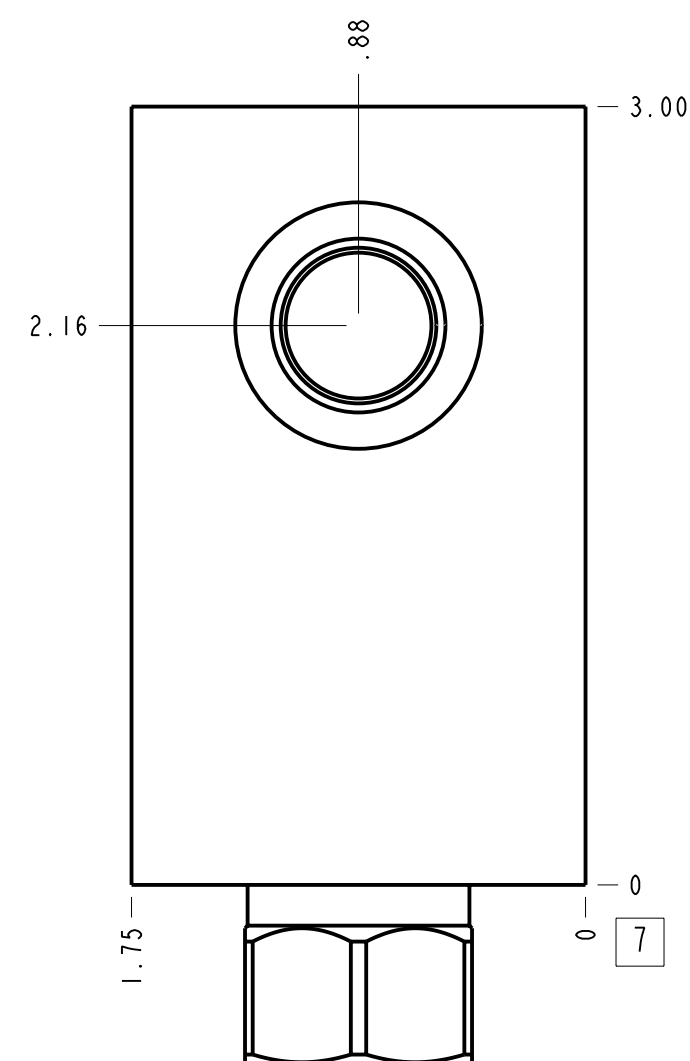
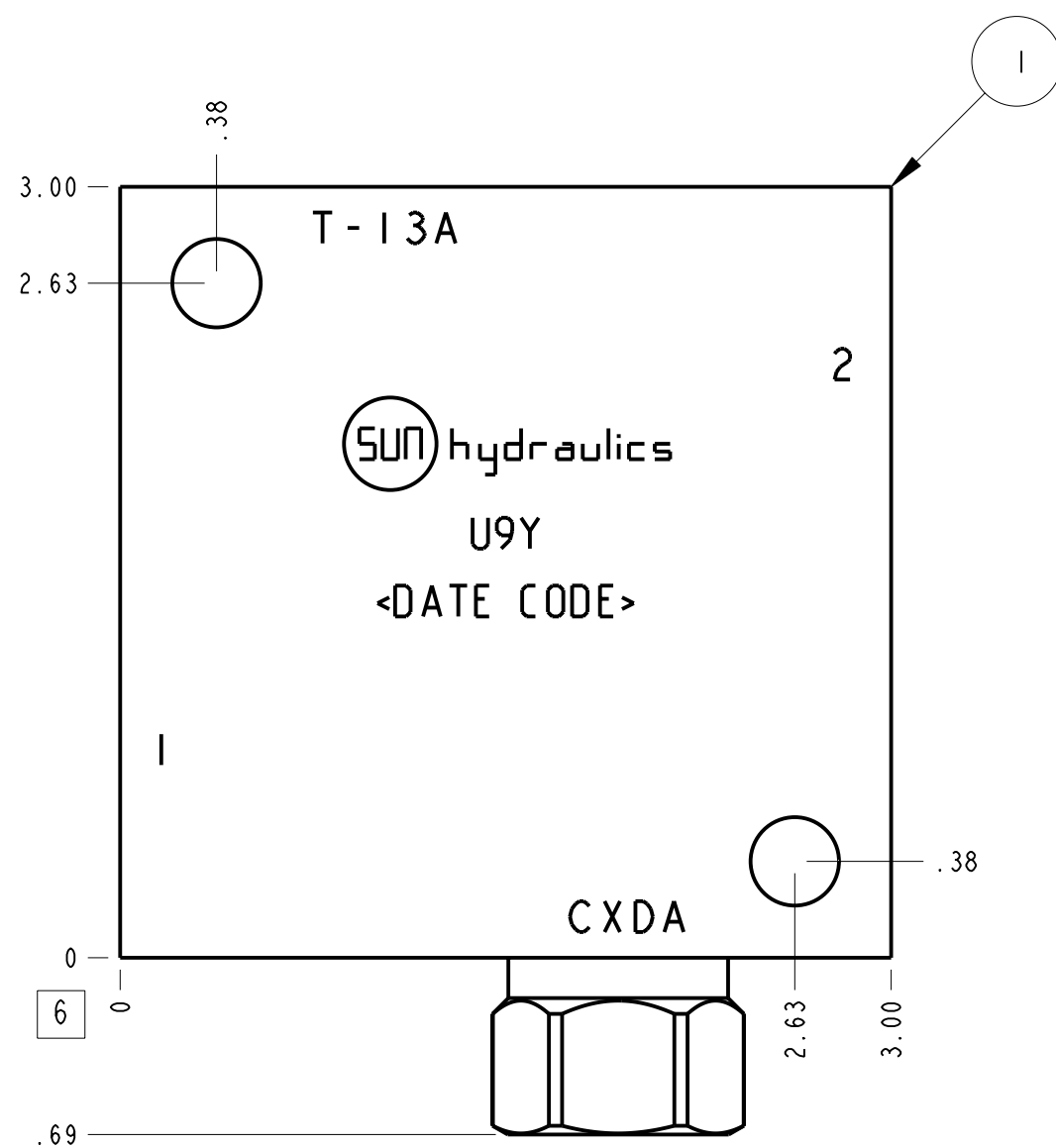
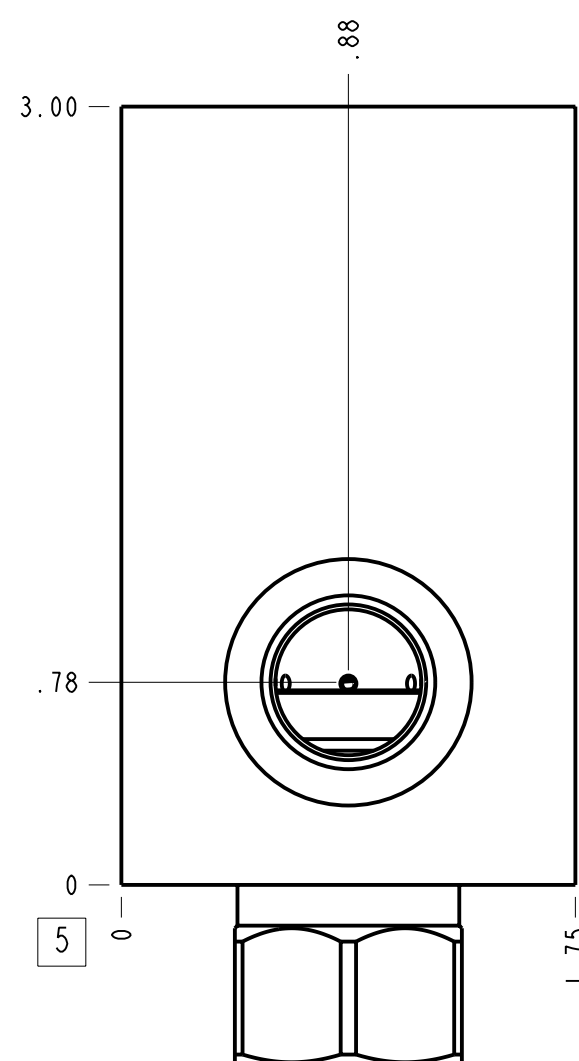
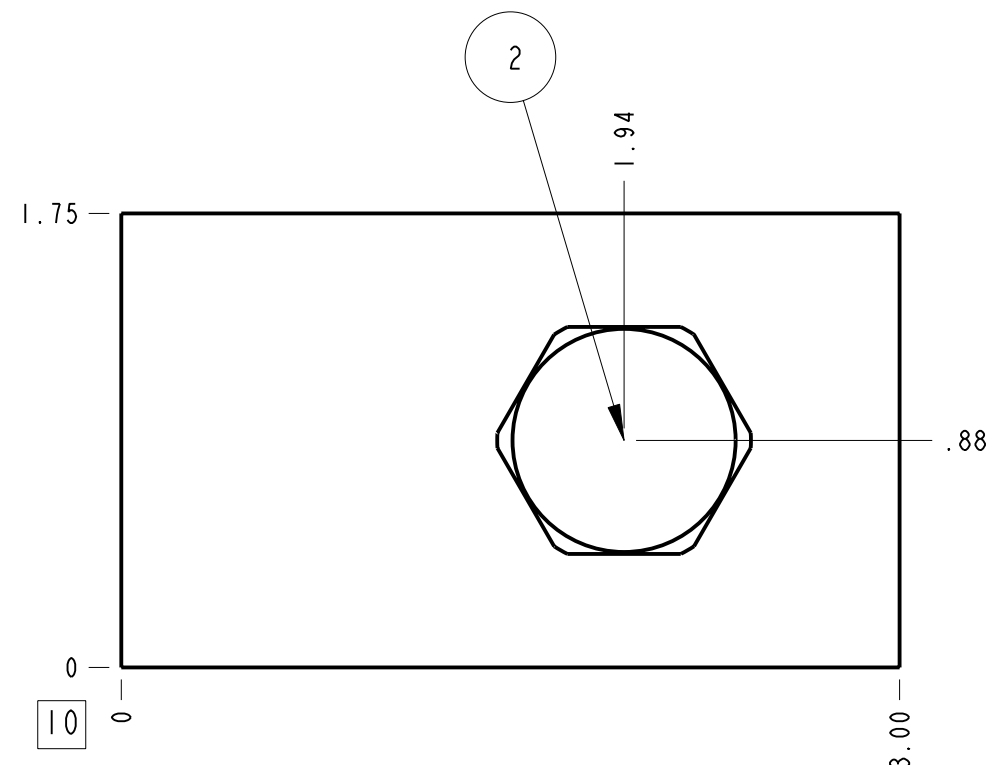


Technical Data	U.S. Units	Metric Units
Cavity		T-13A
Body Features		(See Notes)
Body Type		Line mount
Interface		None
Open Cavity Quantity		1
Weight	1.511 lb.	0.686 kg.
Mounting Hole Diameter	.34 in.	8.6 mm
Mounting Hole Depth		Through
Mounting Hole Quantity		2
Includes integral cartridge(s)	Yes (see Included Components)	



Notes

- Important: Carefully consider the maximum system pressure. The pressure rating of the manifold is dependent on the manifold material, with the port type/size a secondary consideration. Manifolds constructed of aluminum are not rated for pressures higher than 3000 psi (210 bar), regardless of the port type/size specified.
- This drawing is for reference only. It is generated by an automated process and does not fall under Sun's document control process.
- Body Features: Ninety degree with reverse flow check, accepts standard and weatherized coils.



Port Headings		
Product	Port	Size
U9Y	All Ports	3/8" BSPP

2	CXDA-XCN		CHECK VALVE	1		
1	174-425-006	6061-T6 ALUMINUM	BODY	1		
ITEM	PART NO.	SETTING	MATERIAL	PART NAME	QTY	
	MODEL		U9Y	ALL DIMENSIONS IN INCH VIEWS ARE THIRD ANGLE	FIRST ANGLE THIRD ANGLE	
DESCRIPTION		T-13A Line mount (See Notes for Body Features)	DATE	SCALE	DWG SIZE	SHEET
		Aug-09-24	1.351	C	1	

