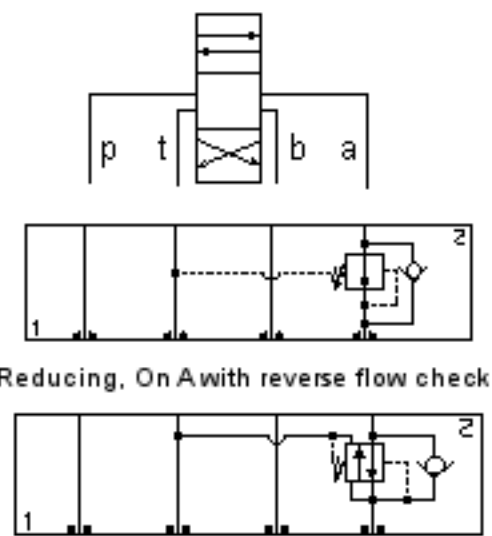
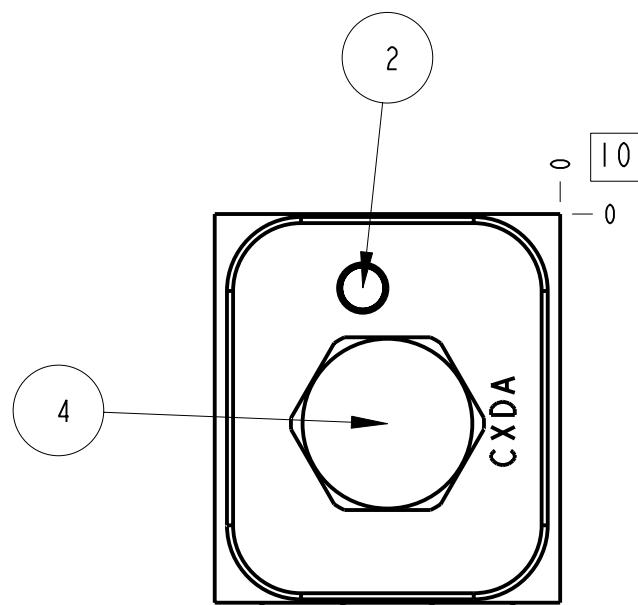
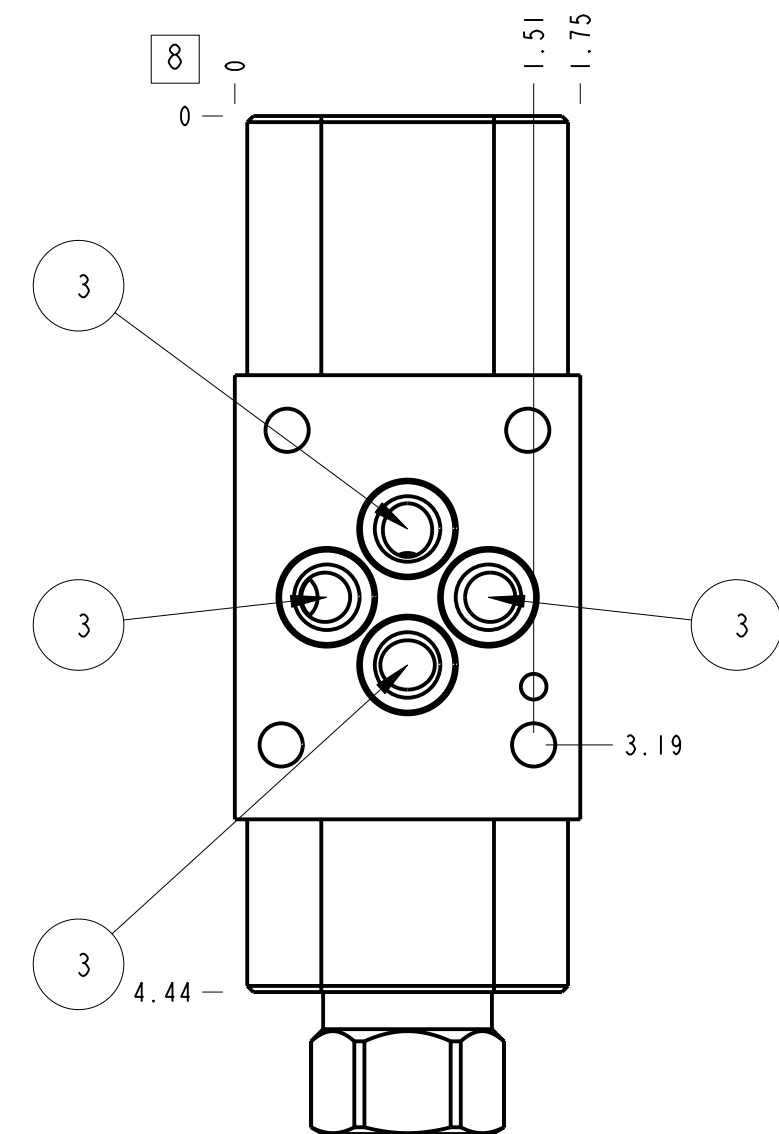
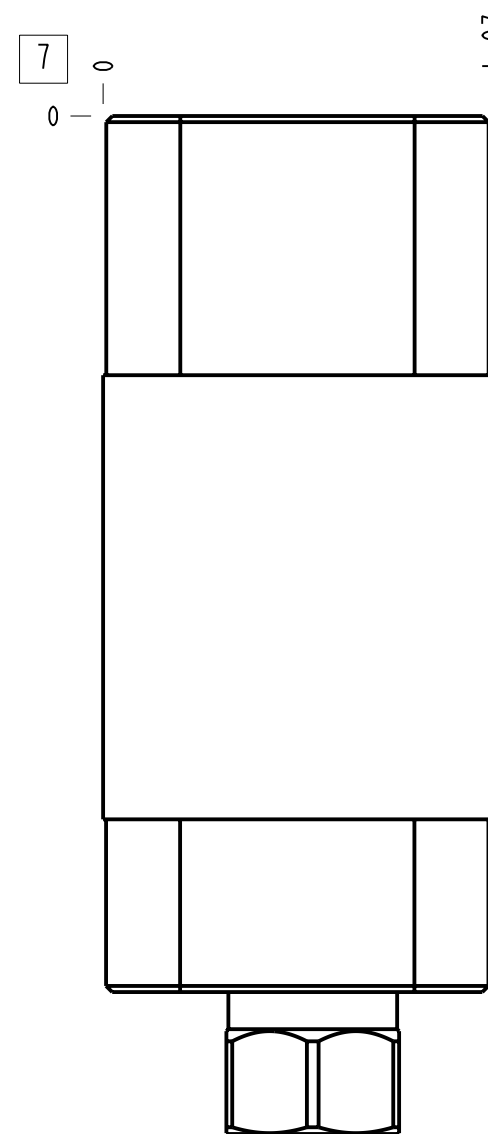
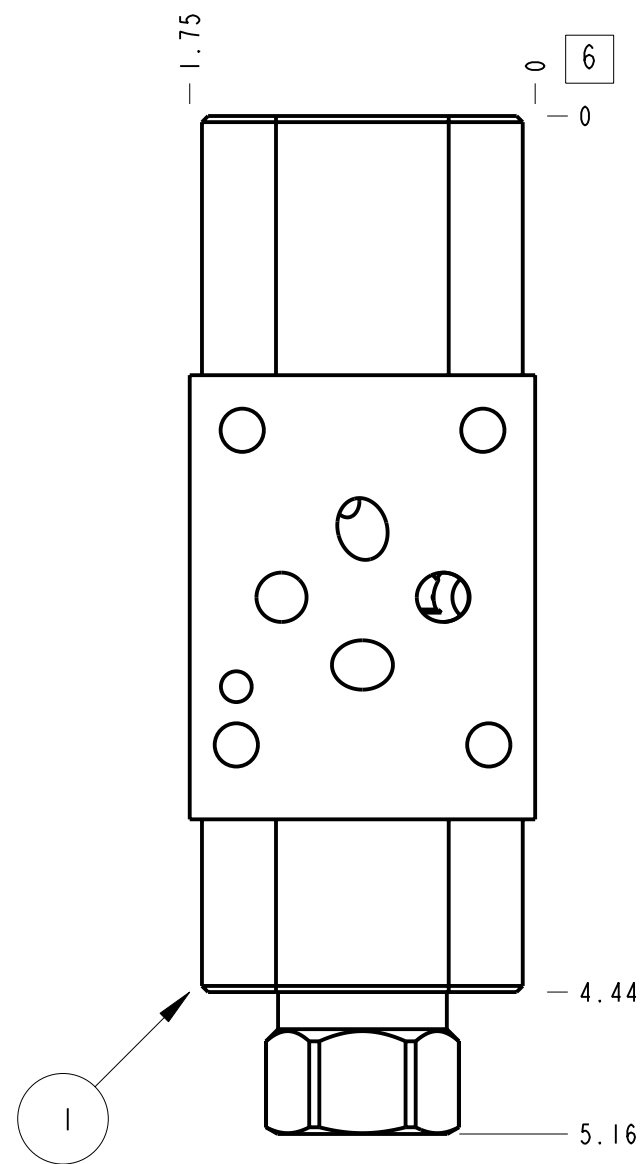
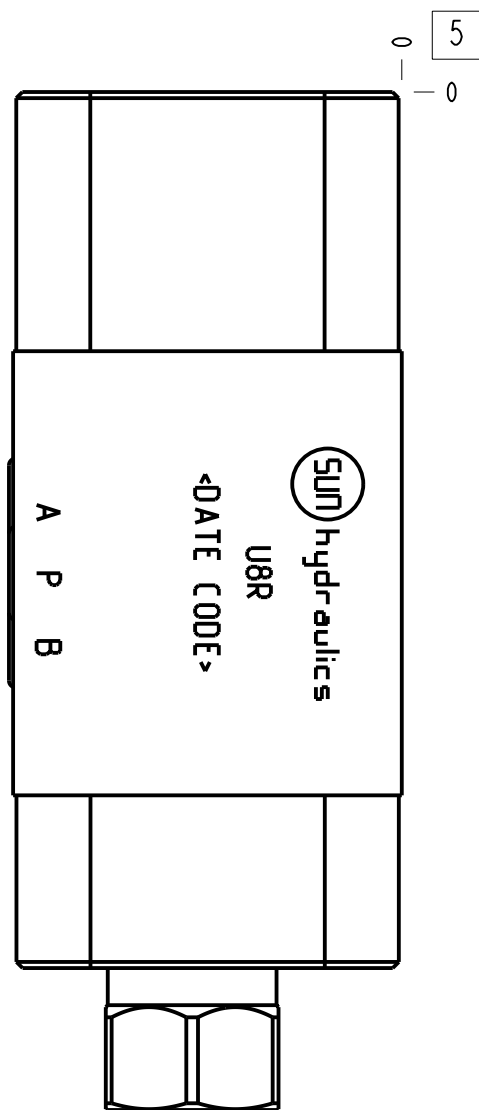
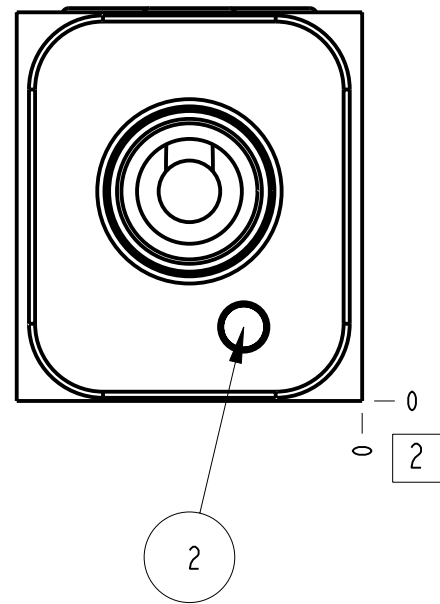
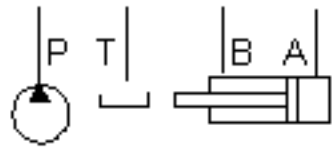


Technical Data	U.S. Units	Metric Units
Cavity	T-11A	
Body Features	Reducer on A with reverse flow check	
Body Type	Sandwich	
Interface	ISO 03	
Open Cavity Quantity	1	
Stack Height	1.97 in.	50 mm
Weight	1.391 lb.	0,631 kg.
Seal Plate Included (see notes)	No	
Includes integral cartridge(s)	Yes (see Included Components)	



Reducing, On A with reverse flow check  
Reducing/Relieving, On A tank to T with reverse flow check



Notes

- Important: Carefully consider the maximum system pressure. The pressure rating of the manifold is dependent on the manifold material, with the port type/size a secondary consideration. Manifolds constructed of aluminum are not rated for pressures higher than 3000 psi (210 bar), regardless of the port type/size specified.
- Seal retainer plate is not required for this model.
- This drawing is for reference only. It is generated by an automated process and does not fall under Sun's document control process.
- Items without balloons are shipped loose.

5	811-001-006			PIN	1
4	CXDA-XCN			CHECK VALVE	1
3	500-001-012	N-0674-70		O-RING	4
2	850-004-250			KOENIG EXPANDER PLUGS	2
1	174-034		6061-T6 ALUMINUM	BODY	1
ITEM	PART NO.	SETTING	MATERIAL	PART NAME	QTY

MODEL: U8R

ALL DIMENSIONS IN INCH VIEWS ARE THIRD ANGLE

DESCRIPTION: T-11A Sandwich ISO 03 Reducer on A with reverse flow check

DATE: Oct-16-23

SCALE: 1.028

DWG SIZE: C

SHEET: 1

FIRST ANGLE

THIRD ANGLE