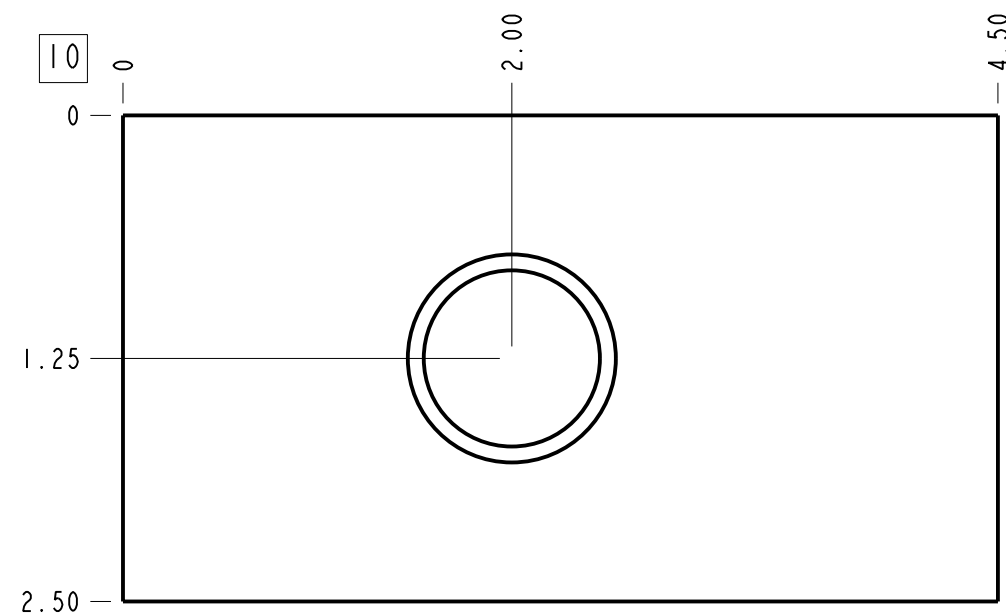
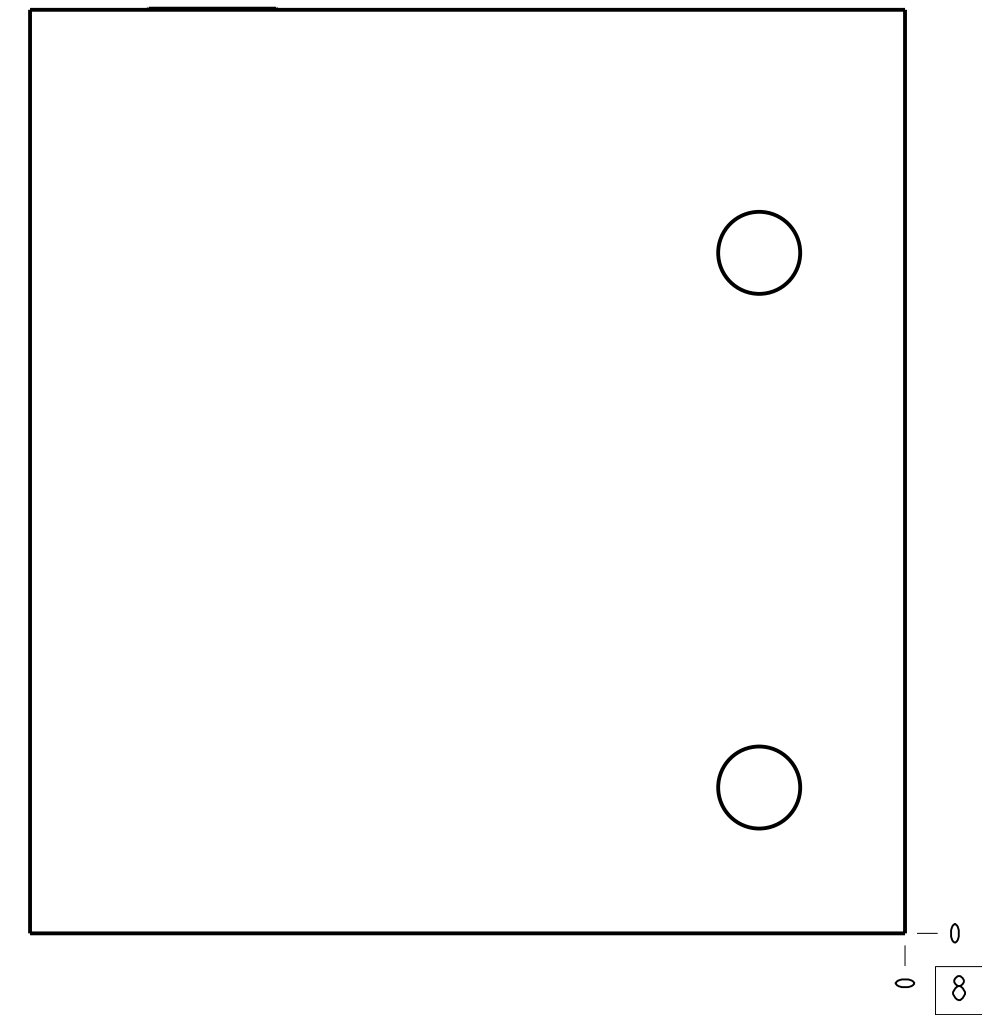
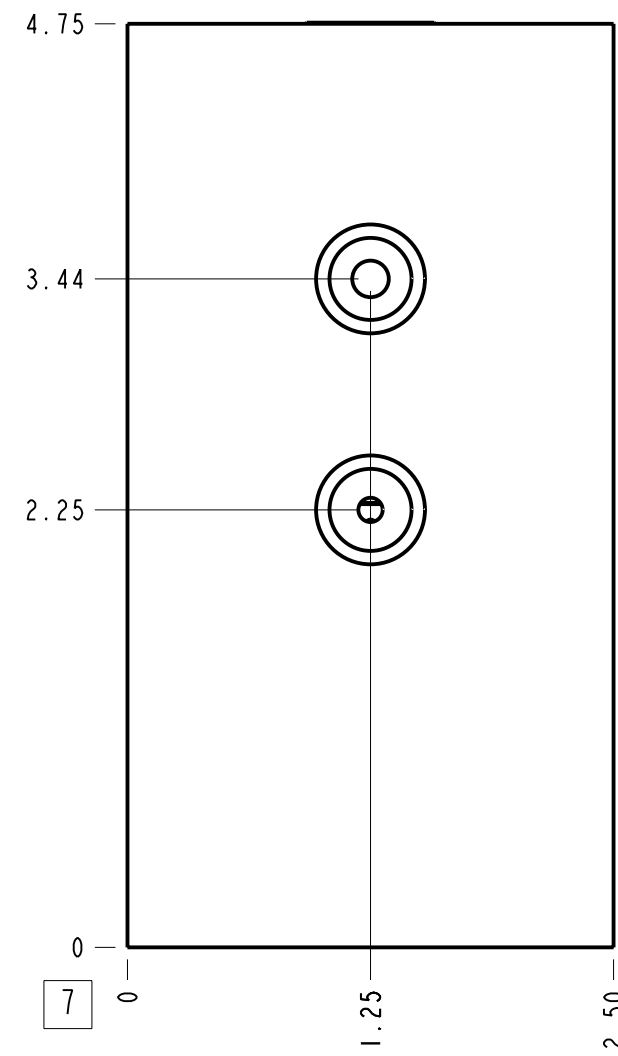
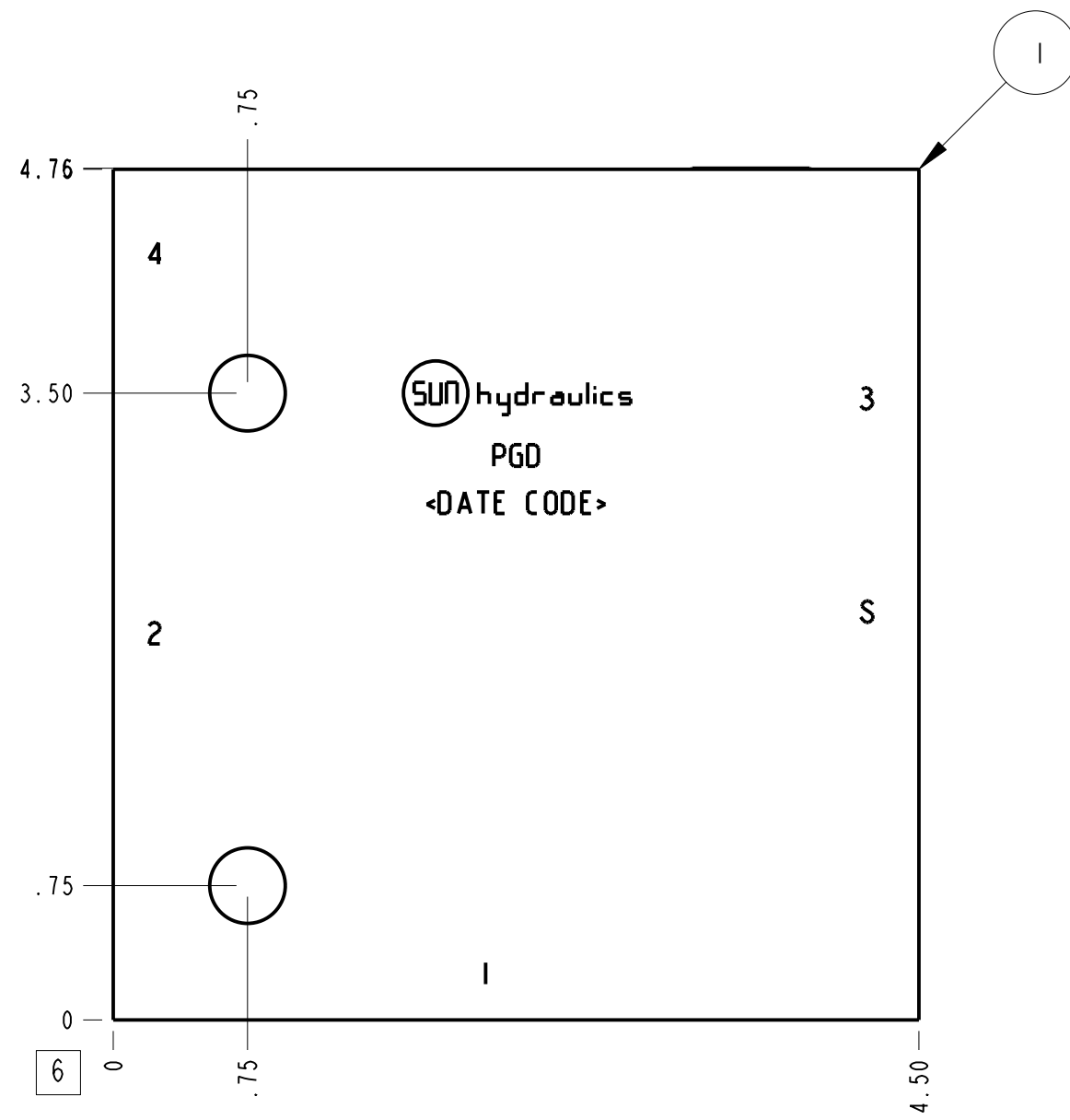
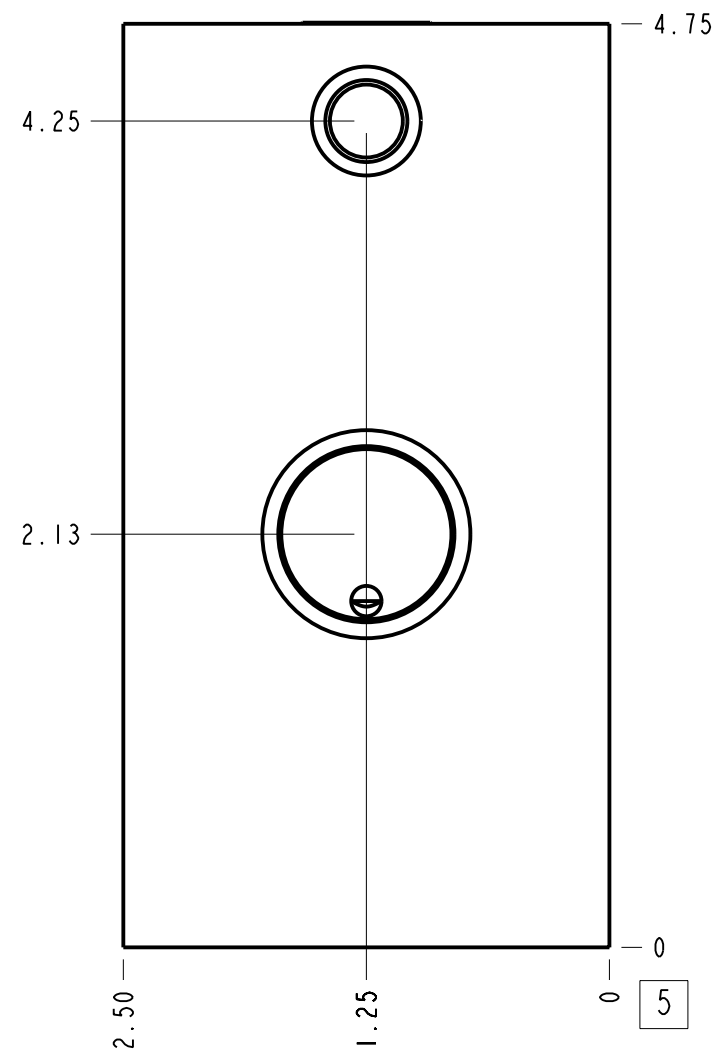


Technical Data	U.S. Units	Metric Units
Cavity	T-23A	
Body Features	Ninety degree with shuttle	
Body Type	Line mount	
Open Cavity Quantity	1	
Weight	4.380 lb.	1,987 kg.
Mounting Hole Diameter	.42 in.	10,7 mm
Mounting Hole Depth	Through	
Mounting Hole Quantity	2	
Includes integral cartridge(s)	Yes (see Included Components)	



Notes

- Important: Carefully consider the maximum system pressure. The pressure rating of the manifold is dependent on the manifold material, with the port type/size a secondary consideration. Manifolds constructed of aluminum are not rated for pressures higher than 3000 psi (210 bar), regardless of the port type/size specified.
- This drawing is for reference only. It is generated by an automated process and does not fall under Sun's document control process.

Port Headings		
Product	Port	Size
PGD	Ports 1 & 2	3/4" NPTF
PGD	Ports 3 & 4	1/4" NPTF
PGD	Port S	1/4" NPTF

3	CSZNXXN			SHUTTLE VALVE	1
2	A330-006-006			SAE-6 PLUG	1
1	155-133-001		6061-T6 ALUMINUM	BODY	1
ITEM	PART NO.	SETTING	MATERIAL	PART NAME	QTY

MODEL		PGD		ALL DIMENSIONS IN INCH VIEWS ARE THIRD ANGLE		FIRST ANGLE		THIRD ANGLE	
DESCRIPTION		DATE	SCALE	DWG SIZE	SHEET				
T-23A Line mount Ninety degree with shuttle		Oct-22-24	1.013	C	1				