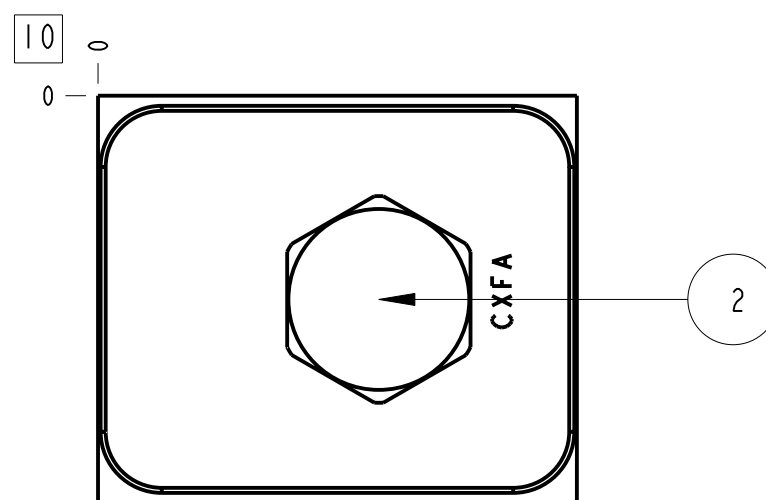
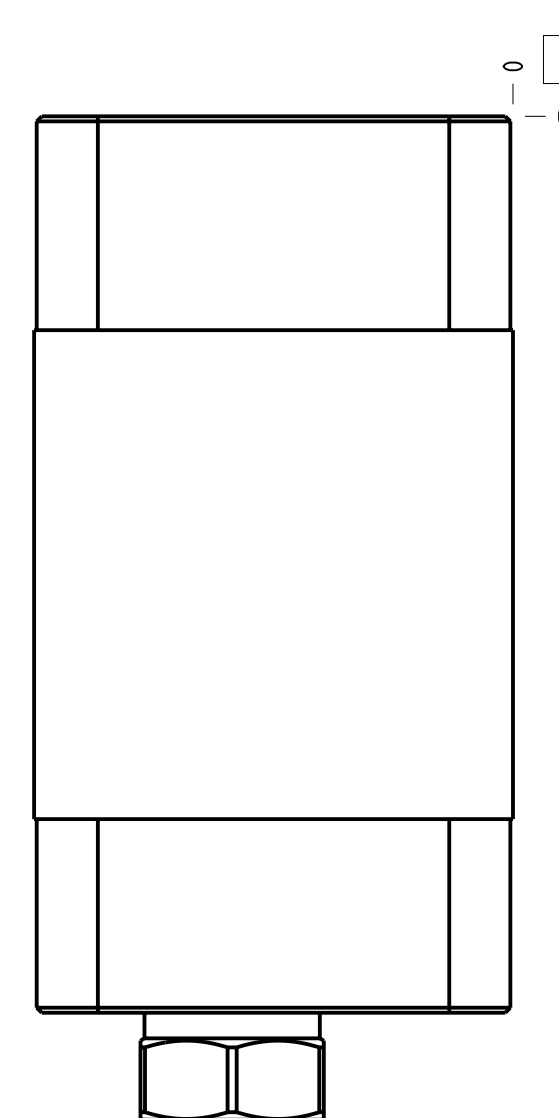
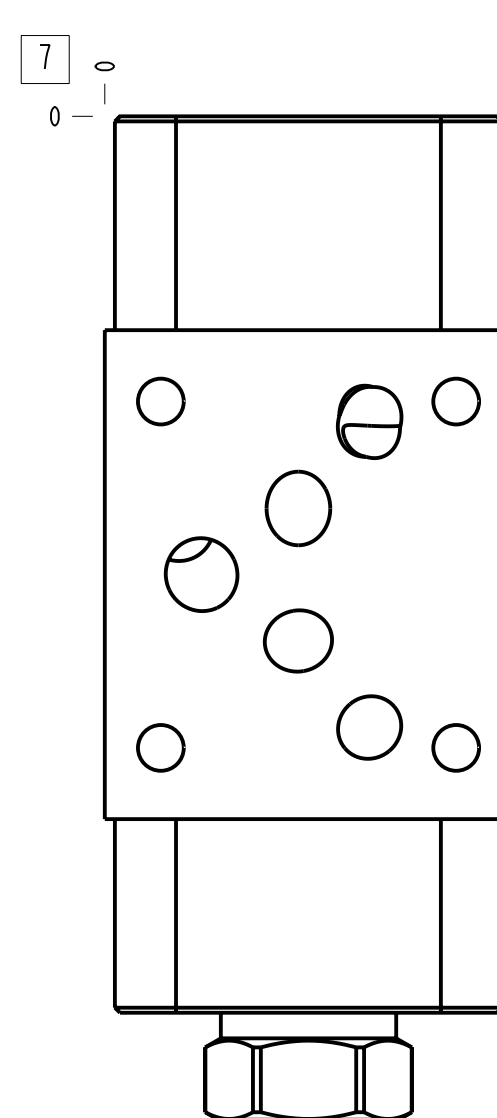
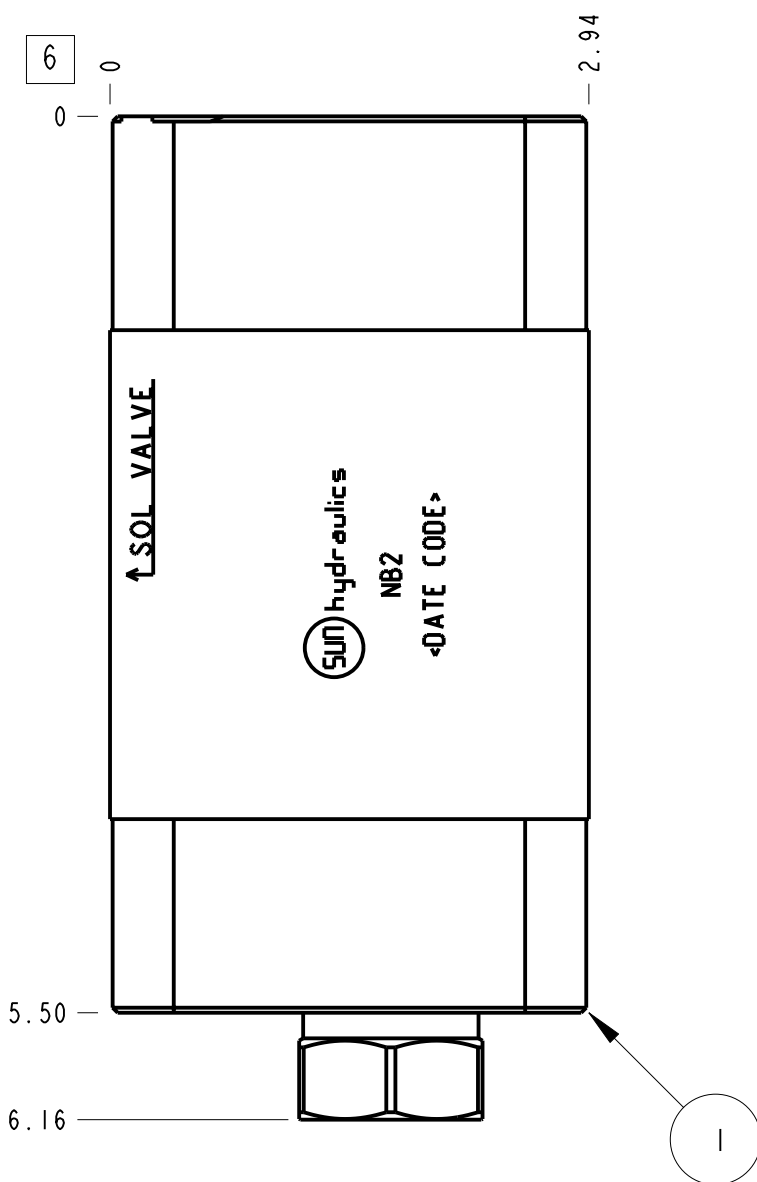
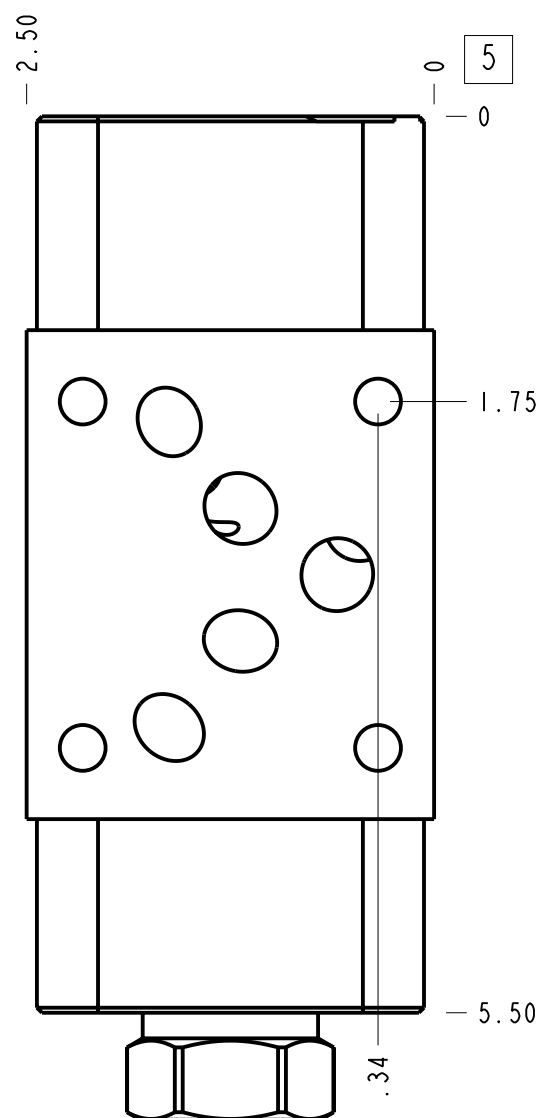
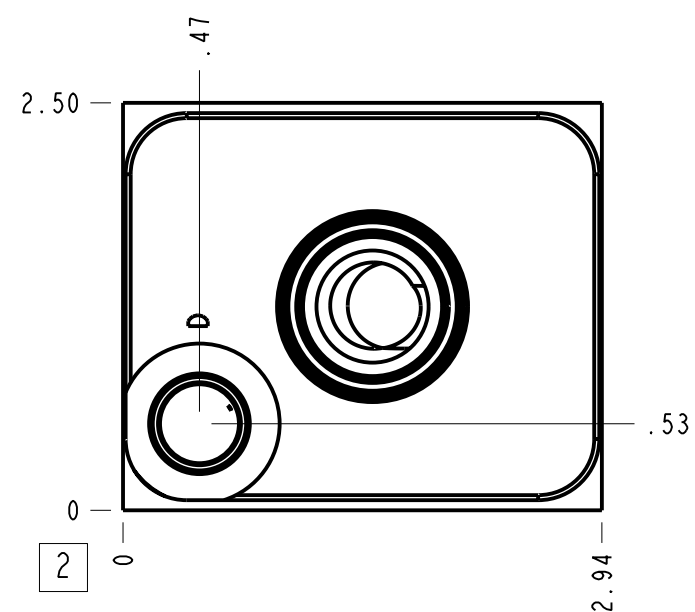


Reducing/Relieving, On A tank to T, external vent, reverse flow check



Technical Data	U.S. Units	Metric Units
Cavity	T-22A	
Body Features	(See Notes)	
Body Type	Sandwich	
Interface	ISO 05	
Open Cavity Quantity	1	
Stack Height	2.99 in.	76 mm
Weight	3.609 lb.	1,637 kg.
Seal Plate Included (see notes)	Yes	
Includes integral cartridge(s)	Yes (see Included Components)	

Notes

- Stack height value in technical data table includes seal retainer plate.
- Important: Carefully consider the maximum system pressure. The pressure rating of the manifold is dependent on the manifold material, with the port type/size a secondary consideration. Manifolds constructed of aluminum are not rated for pressures higher than 3000 psi (210 bar), regardless of the port type/size specified.
- This drawing is for reference only. It is generated by an automated process and does not fall under Sun's document control process.
- Items without balloons are shipped loose.
- Body Features: Reducer/reliever on A with reverse flow check and port 4 external.

Port Headings		
Product	Port	Size
NB2	External Port	SAE 6

4	700-001			SEAL PLATE	1
3	500-001-014			O-RING	5
2	CXFA-XCN			CHECK VALVE	1
1	152-242-001		6061-T6 ALUMINUM	BODY	1
ITEM	PART NO.	SETTING	MATERIAL	PART NAME	QTY

MODEL		NB2		ALL DIMENSIONS IN INCH VIEWS ARE THIRD ANGLE		FIRST ANGLE		THIRD ANGLE	
DESCRIPTION		T-22A Sandwich ISO 05 (See Notes for Body Features)		DATE	SCALE	DWG SIZE	SHEET		
				Nov-20-24	0.849	C	1		