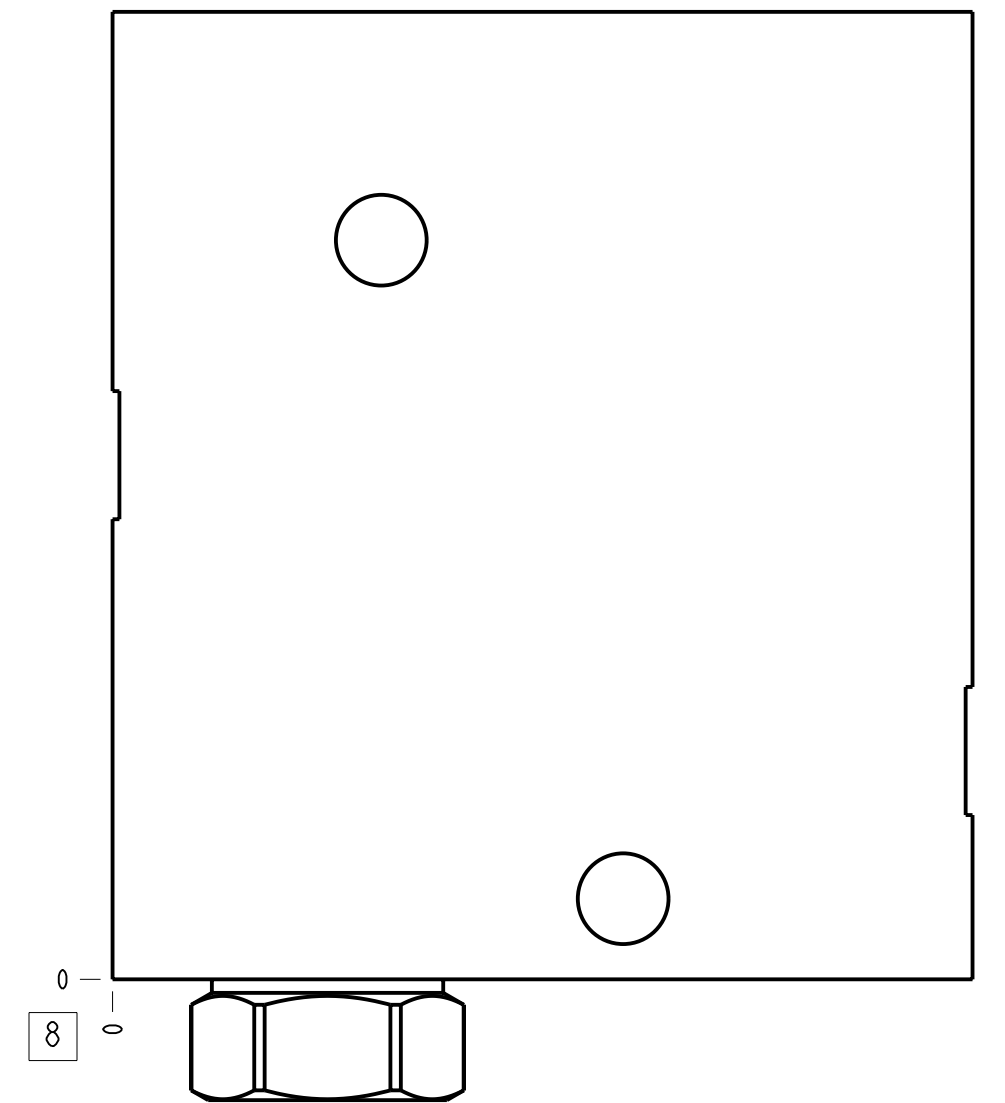
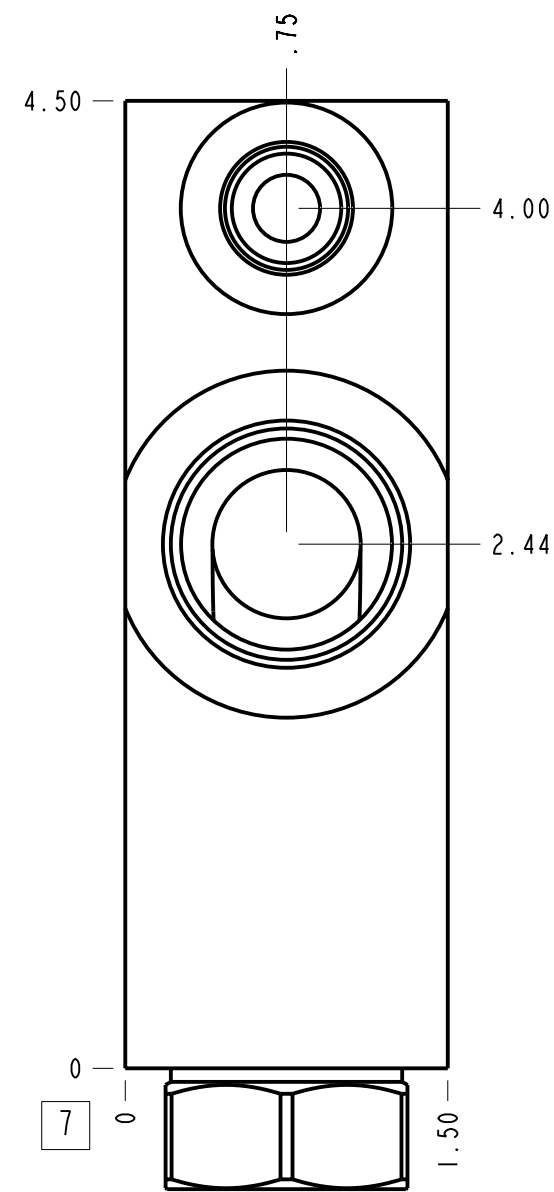
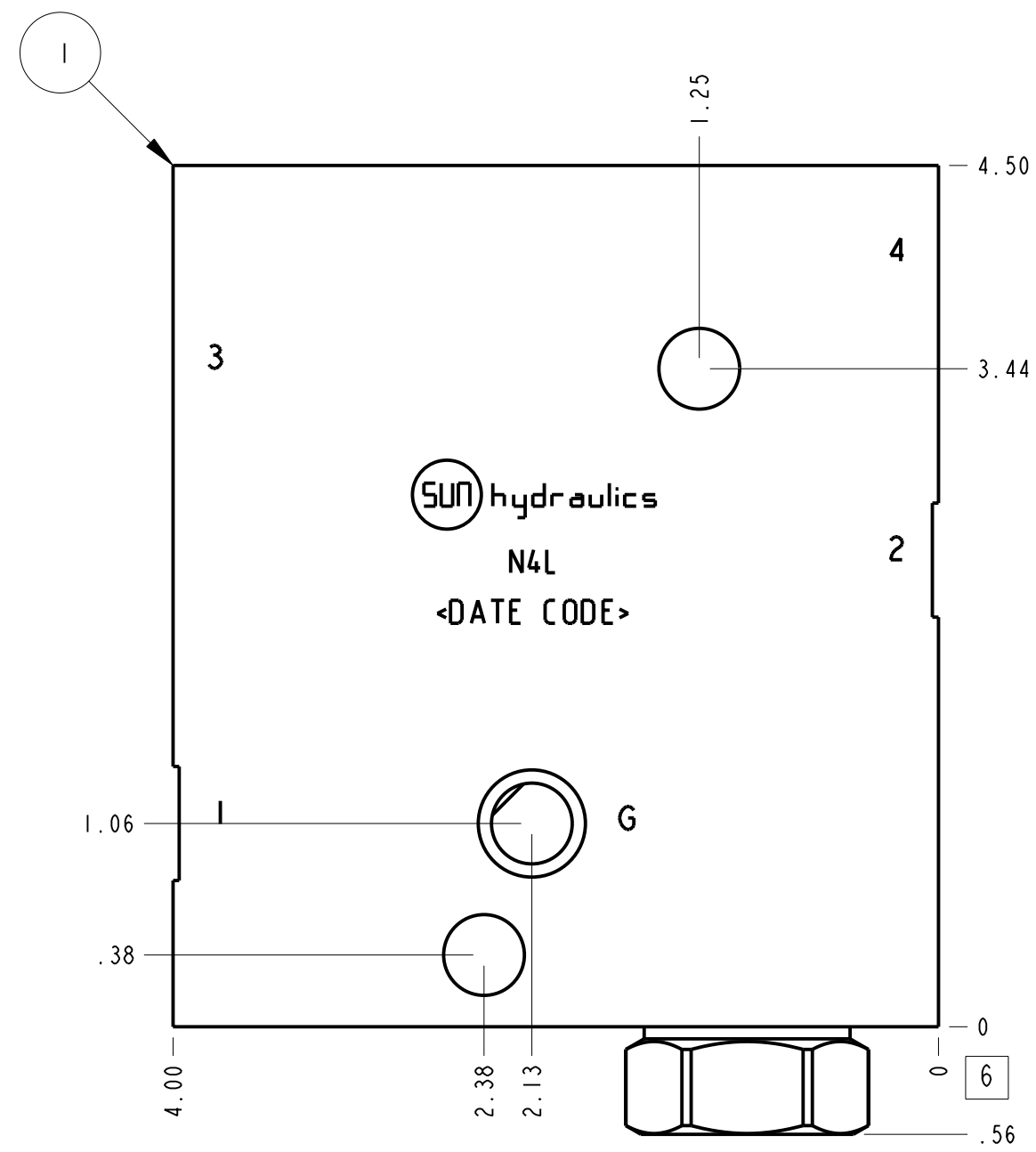
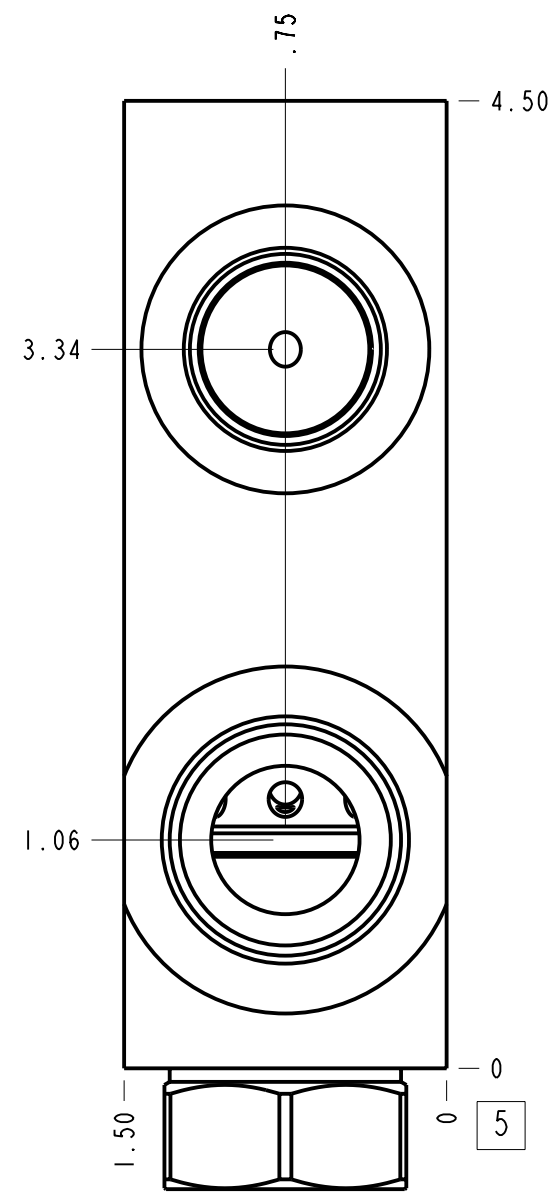
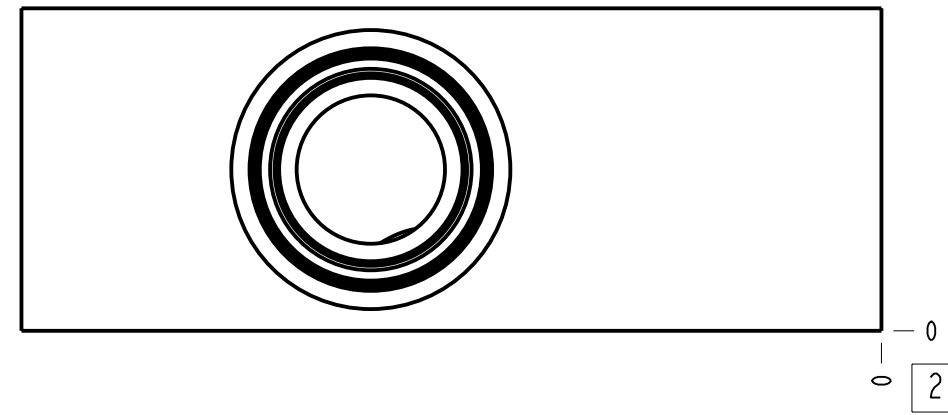
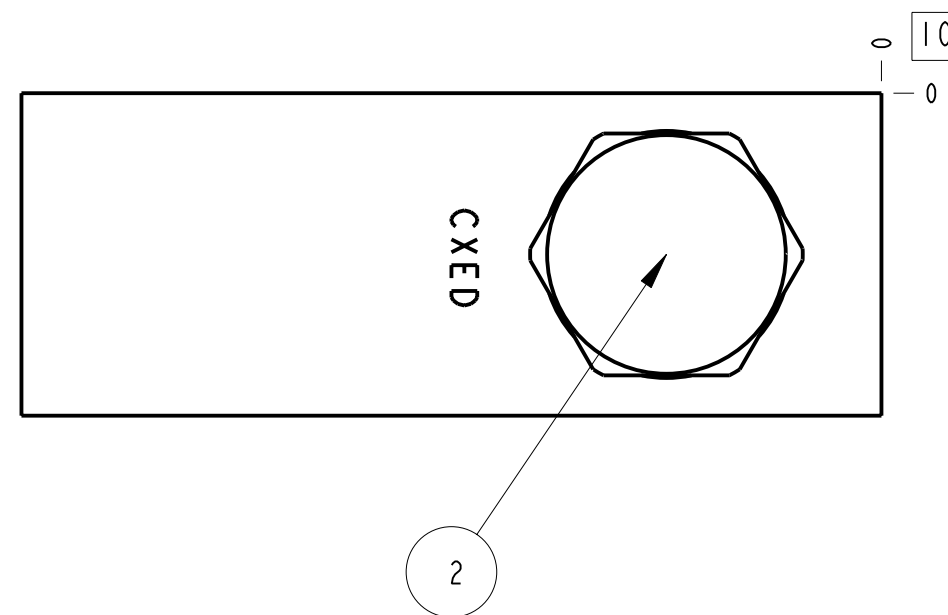


Technical Data	U.S. Units	Metric Units
Cavity	T-22A	
Body Features	Ninety degree with reverse flow check - reducing	
Body Type	Line mount	
Interface	None	
Open Cavity Quantity	1	
Weight	2.270 lb.	1,030 kg.
Mounting Hole Diameter	.41 in.	10,4 mm
Mounting Hole Depth	Through	
Mounting Hole Quantity	2	
Includes integral cartridge(s)	Yes (see Included Components)	



Notes

1. Important: Carefully consider the maximum system pressure. The pressure rating of the manifold is dependent on the manifold material, with the port type/size a secondary consideration. Manifolds constructed of aluminum are not rated for pressures higher than 3000 psi (210 bar), regardless of the port type/size specified.
2. This drawing is for reference only. It is generated by an automated process and does not fall under Sun's document control process.



Port Headings		
Product	Port	Size
N4L	Ports 1 & 2	SAE 12
N4L	Port 3	SAE 10
N4L	Port 4	SAE 6
N4L	Gage Port	1/4" NPTF

2	CXED-XCN		CHECK VALVE	1	
1	151-916-008	6061-T6 ALUMINUM	BODY	1	
I T E M	PART NO.	SETTING	MATERIAL	PART NAME	Q T Y
	MODEL		N4L	ALL DIMENSIONS IN INCH VIEWS ARE THIRD ANGLE	FIRST ANGLE THIRD ANGLE
DESCRIPTION		DATE	SCALE	DWG SIZE	SHEET
T-22A Line mount (See Technical Data for Body Features)		Aug-21-24	1:120	C	1

