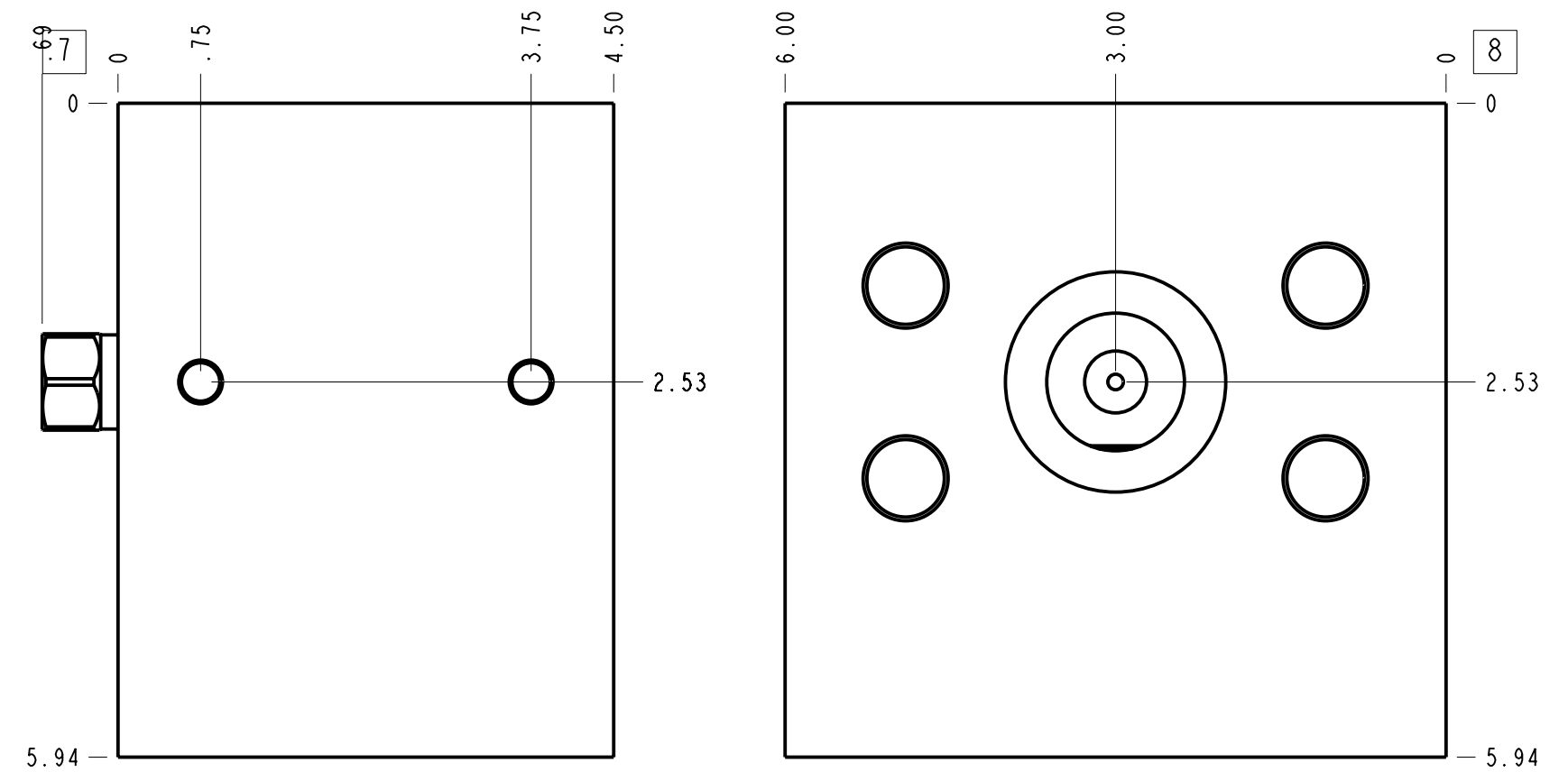
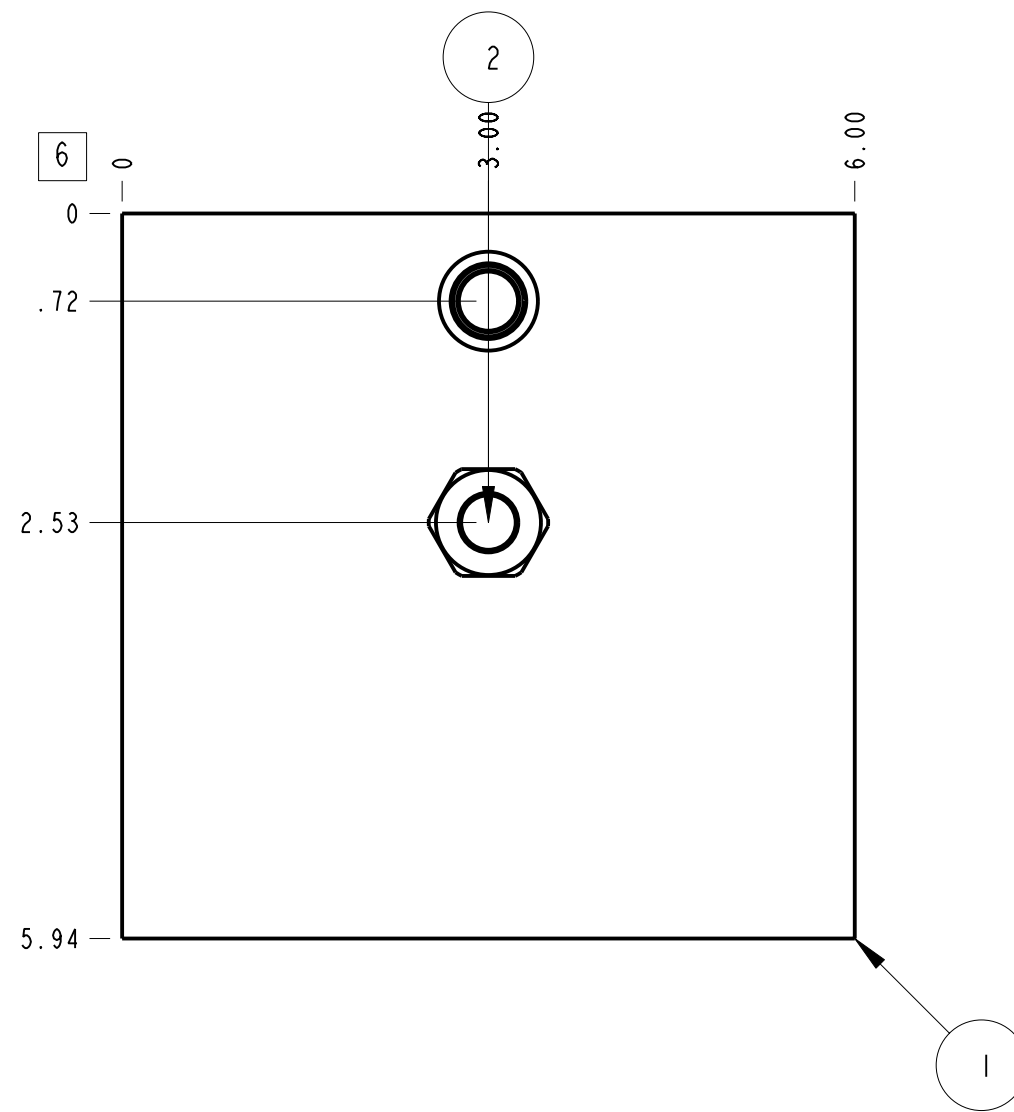
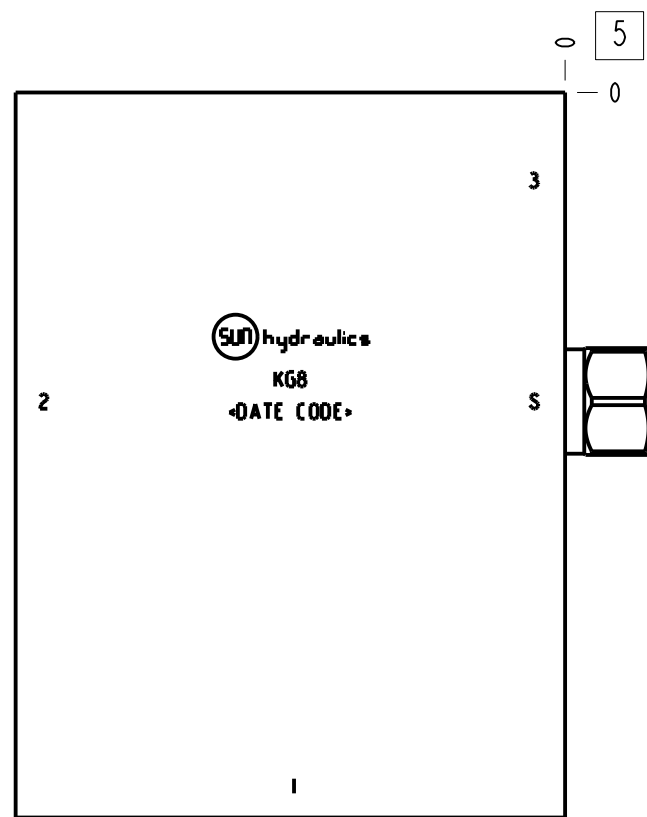
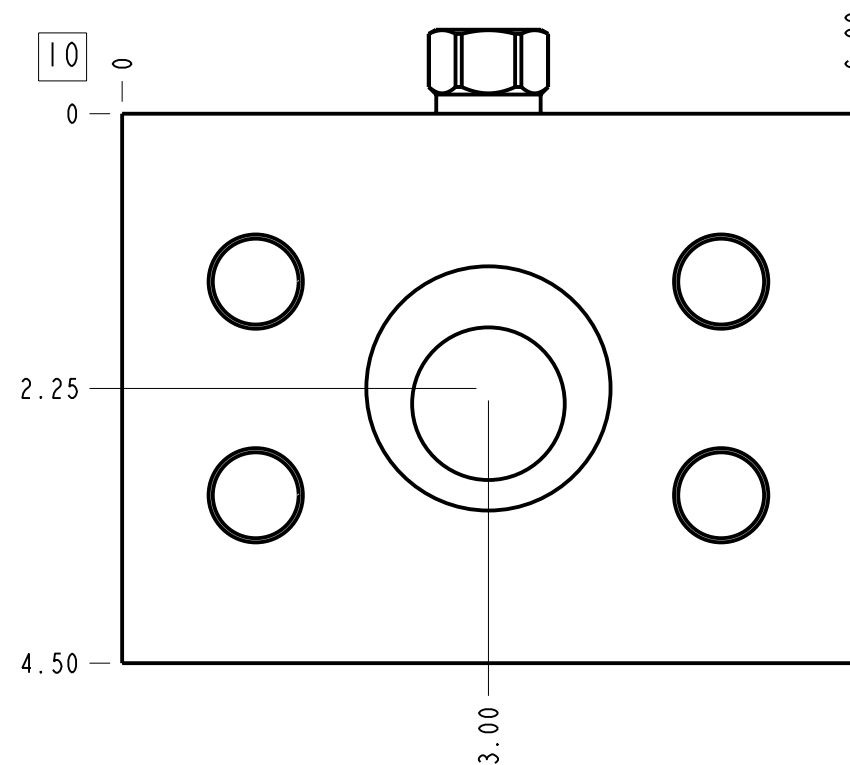


Technical Data	U.S. Units	Metric Units
Cavity	T-19A	
Body Features	Ninety degree with shuttle	
Body Type	Line mount	
Interface	None	
Open Cavity Quantity	1	
Weight	13.215 lb.	5,994 kg.
Mounting Hole Thread	.375-16 UNC - 2B in.	
Mounting Hole Depth	.62 in.	15,7 mm
Mounting Hole Quantity	2	
Includes integral cartridge(s)	Yes (see Included Components)	



Notes

1. Port S is the external connection at the top of the shuttle cartridge.
2. Important: Carefully consider the maximum system pressure. The pressure rating of the manifold is dependent on the manifold material, with the port type/size a secondary consideration. Manifolds constructed of aluminum are not rated for pressures higher than 3000 psi (210 bar), regardless of the port type/size specified.
3. Flange mounting hole data: Inch: 3/4-10UNC x 1.50 (38,1 mm) DP, Metric: M20 x 2.5-6H x 1.50 (38,1 mm) DP
4. This drawing is for reference only. It is generated by an automated process and does not fall under Sun's document control process.



Port Headings		
Product	Port	Size
KG8	Ports 1 & 2	2" Code 62
KG8	Port 3	SAE 6
KG8	Port S	SAE 4

2	CSAAEXN			SHUTTLE VALVE	1
1	159-388-001		6061-T6 ALUMINUM	BODY	1
ITEM	PART NO.	SETTING	MATERIAL	PART NAME	QTY
	MODEL				
DESCRIPTION			ALL DIMENSIONS IN INCH VIEWS ARE THIRD ANGLE		
T-19A Line mount Ninety degree with shuttle			DATE	SCALE	DWG SIZE SHEET
			Sep-11-23	0.636	C 1
				FIRST ANGLE	THIRD ANGLE