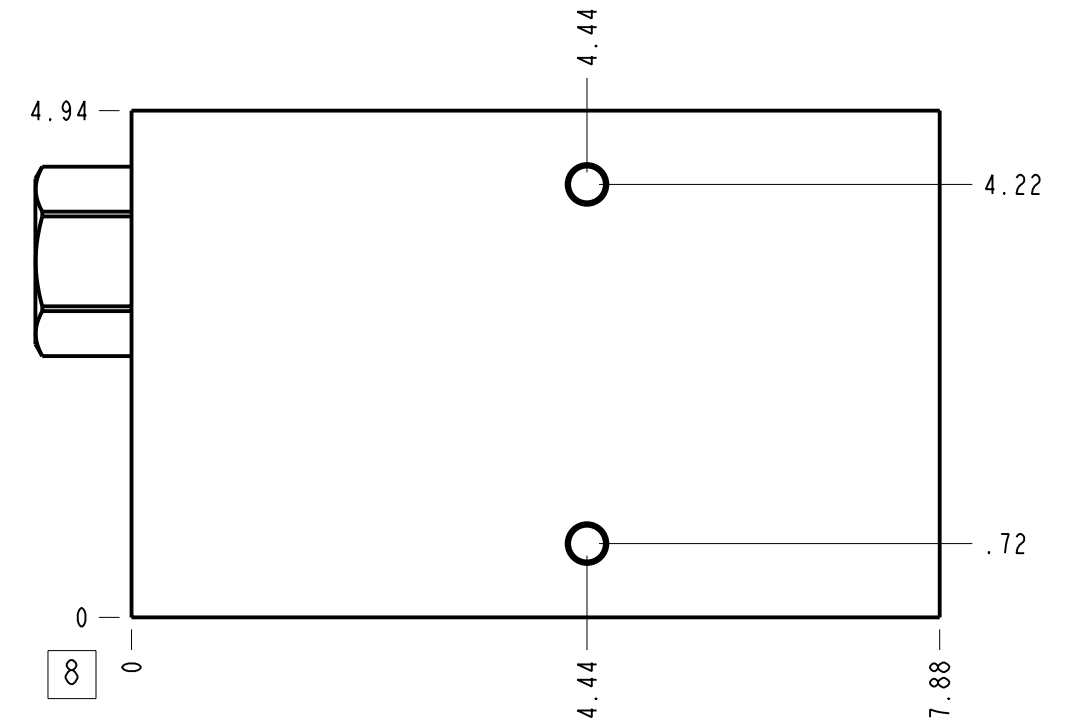
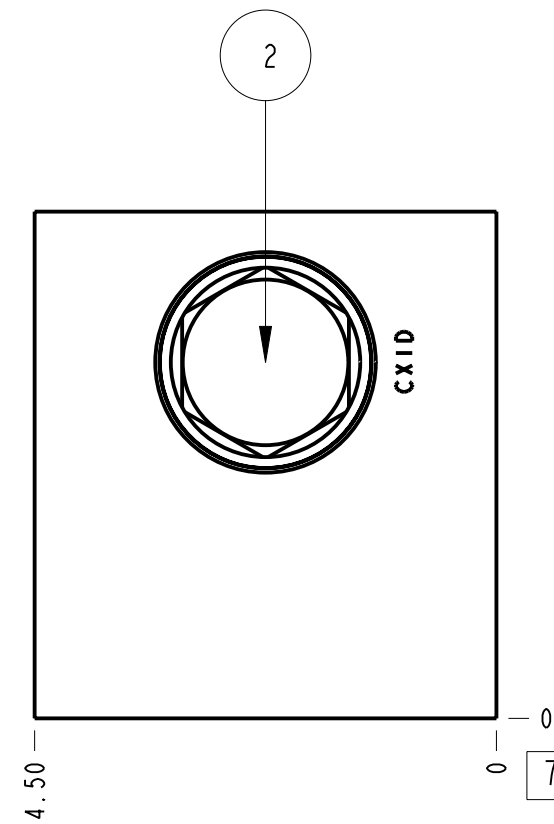
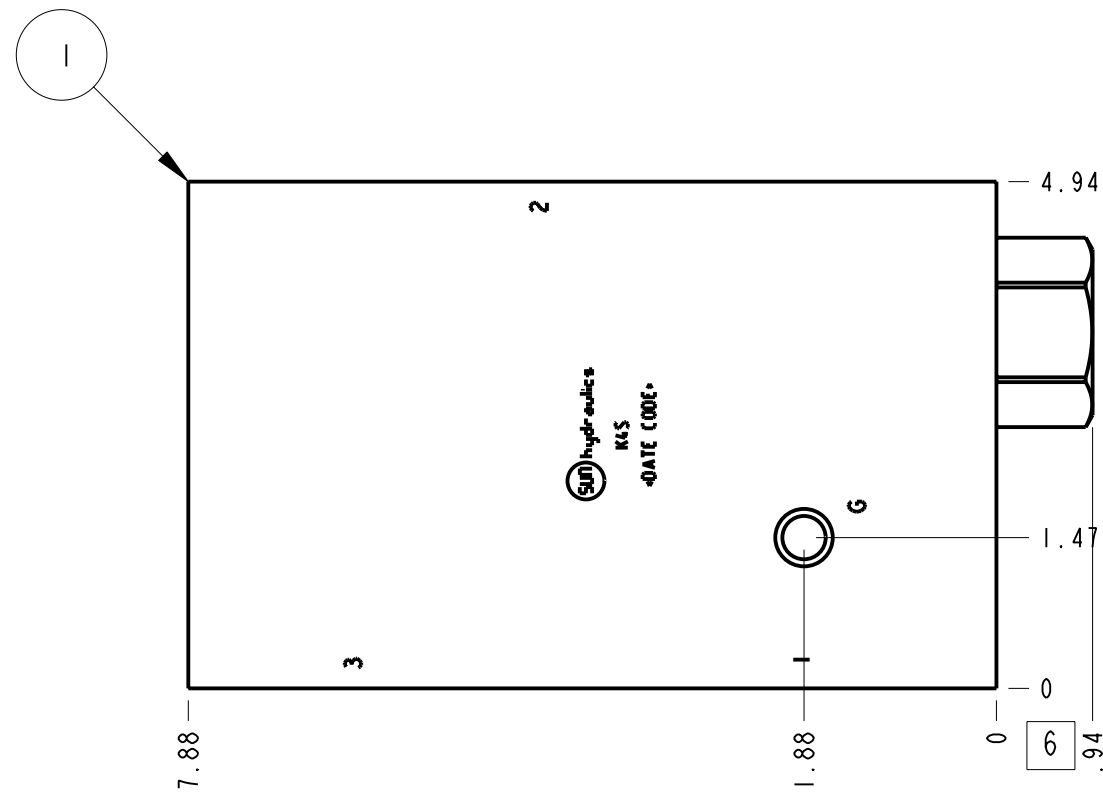
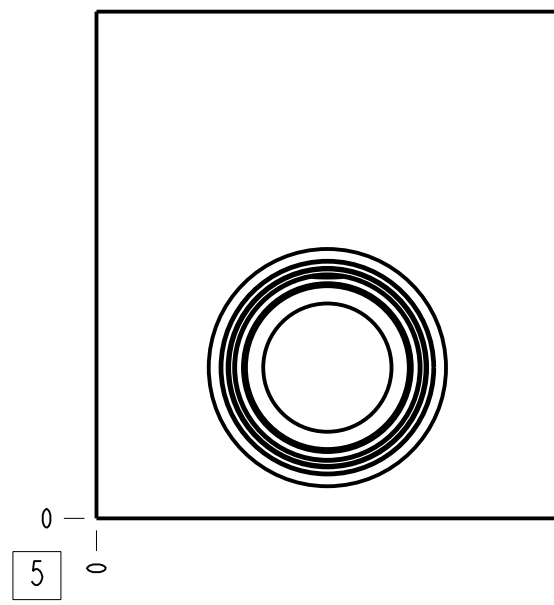
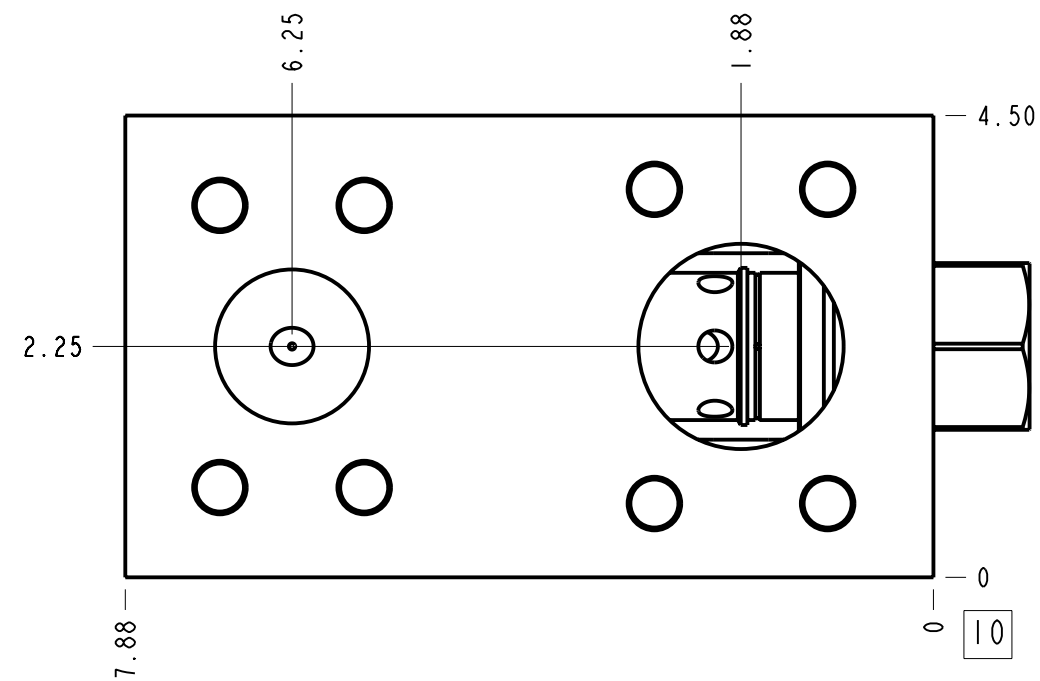


Technical Data	U.S. Units	Metric Units
Cavity	T-19A	
Body Features	Ninety degree with reverse flow check - reducing	
Body Type	Line mount	
Interface	None	
Open Cavity Quantity	1	
Weight	15.118 lb.	6,858 kg.
Mounting Hole Thread	.375-16 UNC - 2B in.	
Mounting Hole Depth	.62 in.	15,7 mm
Mounting Hole Quantity	2	
Includes integral cartridge(s)	Yes (see Included Components)	



Notes

- Important: Carefully consider the maximum system pressure. The pressure rating of the manifold is dependent on the manifold material, with the port type/size a secondary consideration. Manifolds constructed of aluminum are not rated for pressures higher than 3000 psi (210 bar), regardless of the port type/size specified.
- Flange mounting hole data: Inch: 1/2-13 UNC x 1.06 (26,9 mm) DP, Metric: M12
- This drawing is for reference only. It is generated by an automated process and does not fall under Sun's document control process.



Port Headings		
Product	Port	Size
K4S	Ports 1 & 2	2" Code 61
K4S	Port 3	1 1/2 in. Code 61
K4S	Gage Port	1/4" NPTF

2	CXID-XCN		CHECK VALVE	1	
1	151-167-001	6061-T6 ALUMINUM	BODY	1	
ITEM	PART NO.	SETTING	MATERIAL	PART NAME	QTY
MODEL		K4S	ALL DIMENSIONS IN INCH VIEWS ARE THIRD ANGLE		
DESCRIPTION		T-19A Line mount (See Technical Data for Body Features)	DATE	SCALE	DWG SIZE SHEET
		Feb-21-24	0.534	C	1

