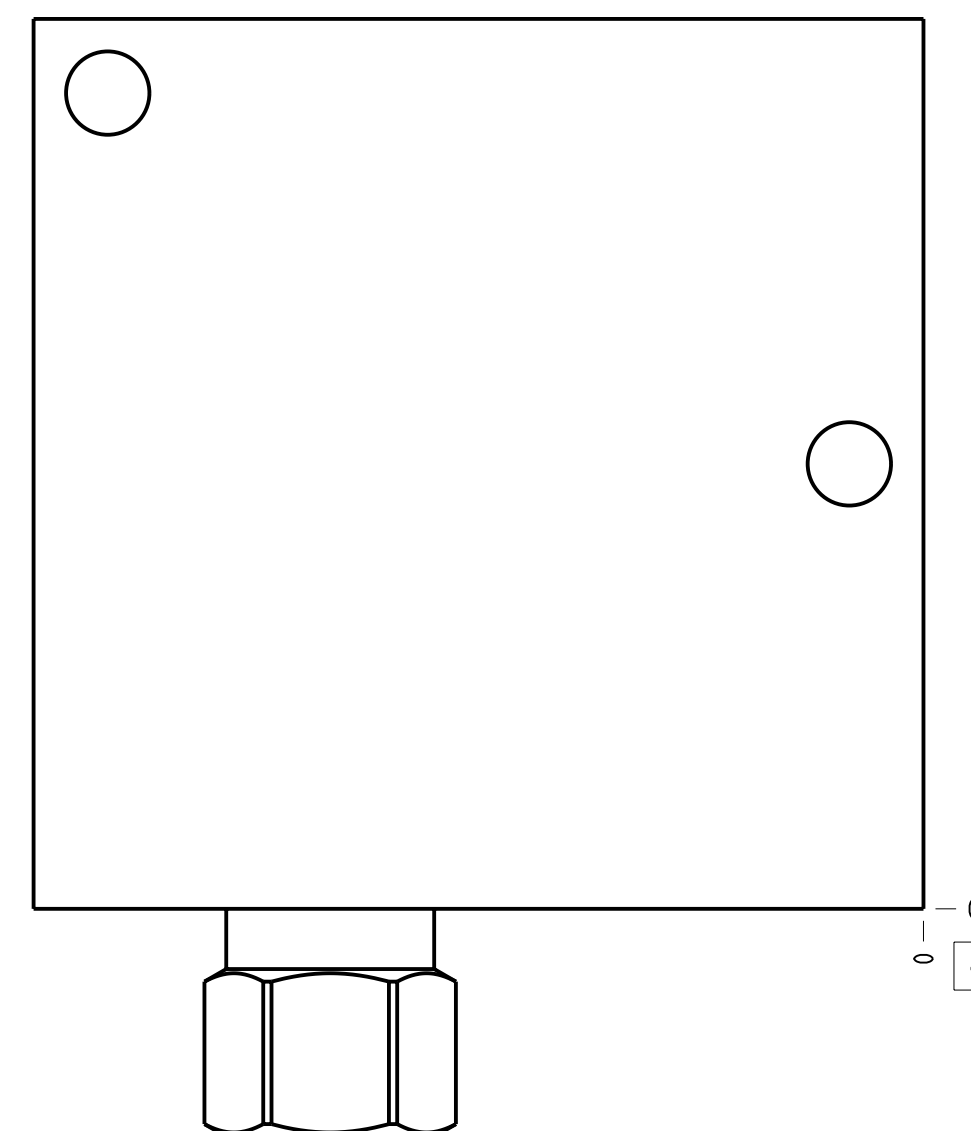
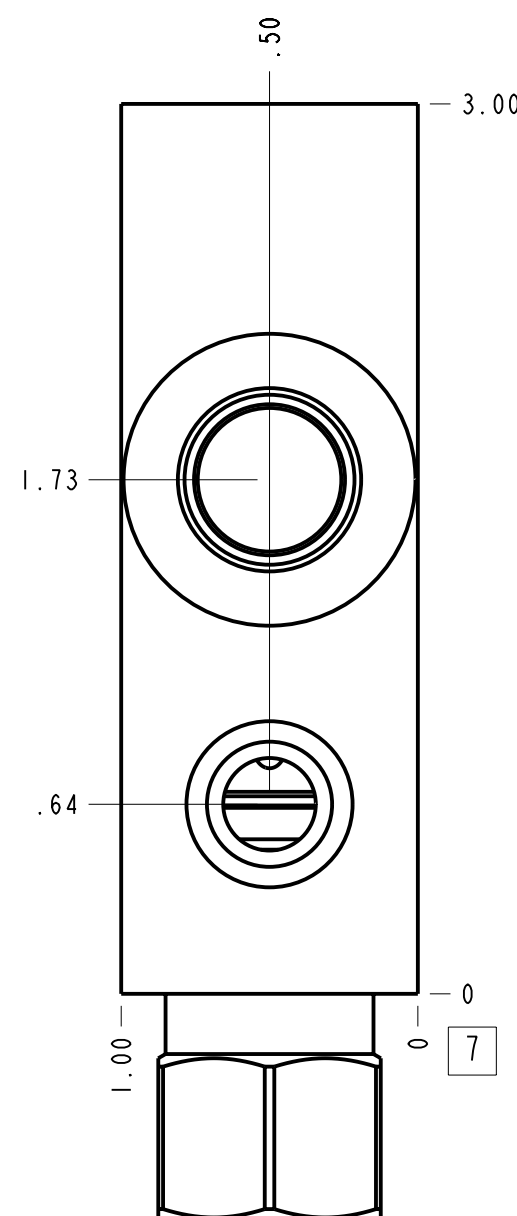
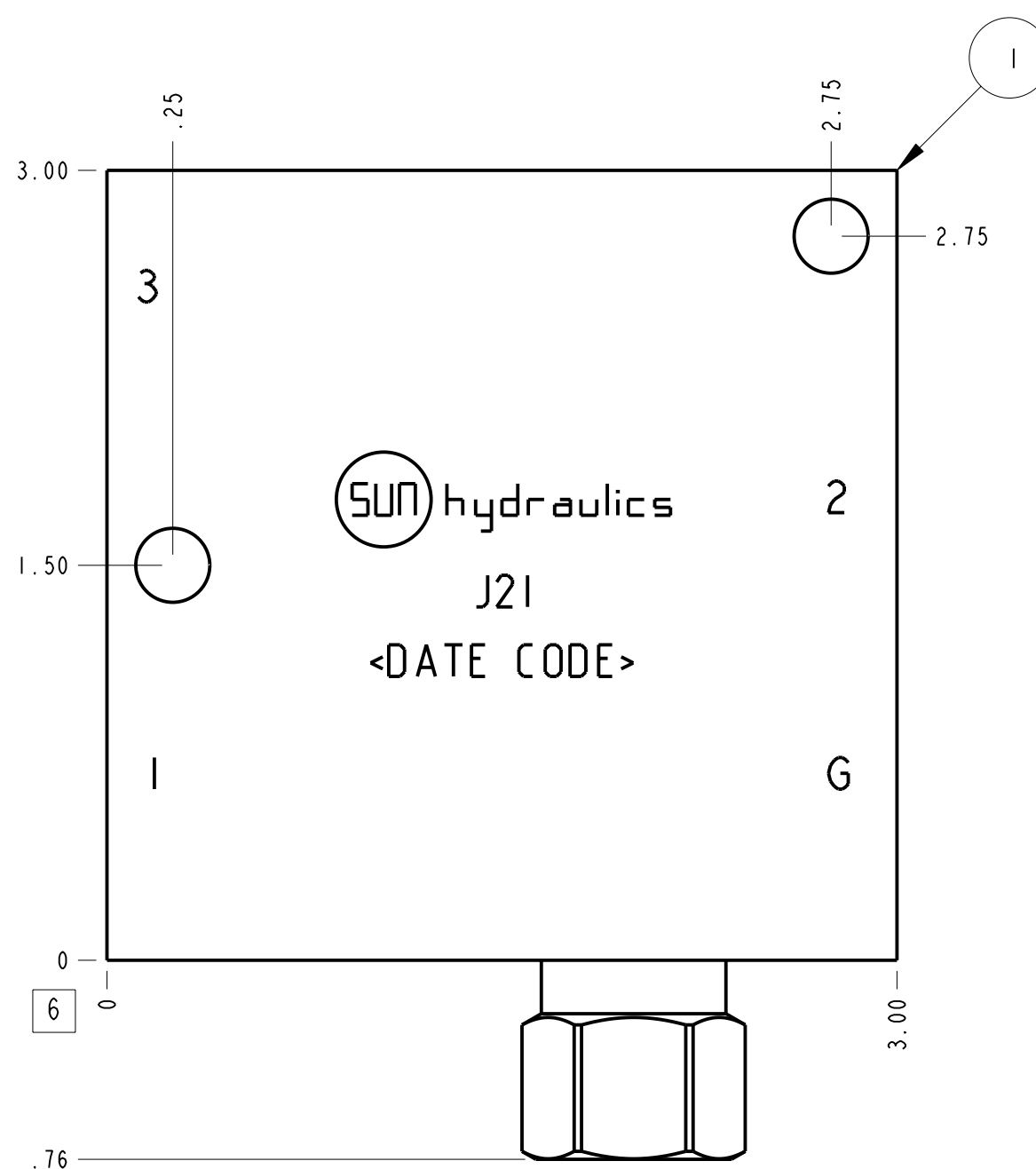
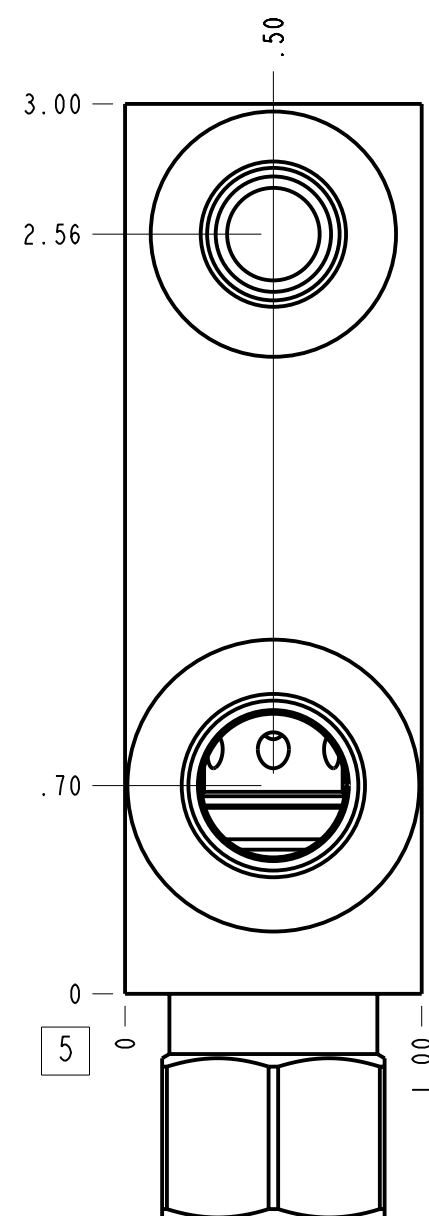
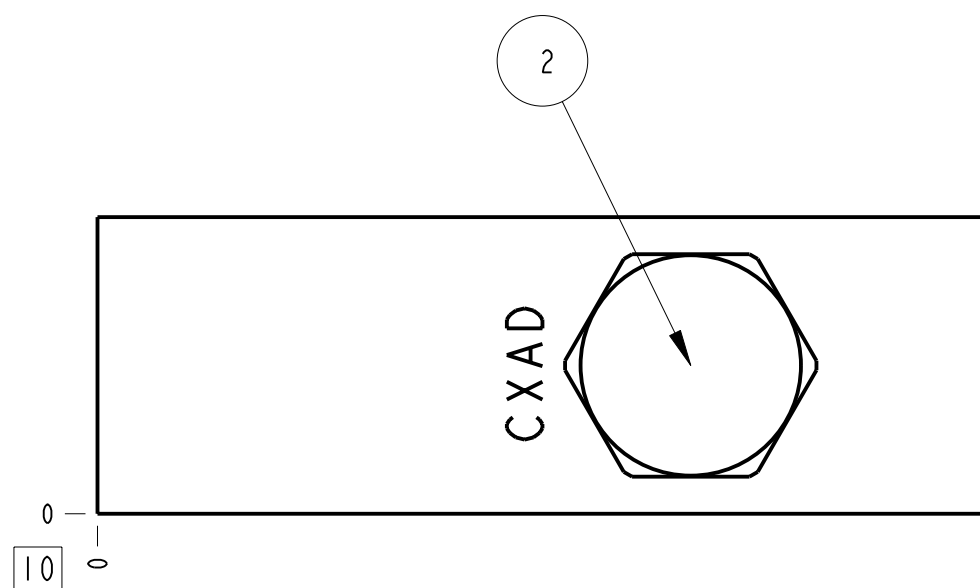


| Technical Data | U.S. Units | Metric Units |
|--------------------------------|--|--------------|
| Cavity | T-163A | |
| Body Features | Ninety degree with reverse flow check - reducing | |
| Body Type | Line mount | |
| Interface | None | |
| Open Cavity Quantity | 1 | |
| Weight | 0.853 lb. | 0,387 kg. |
| Mounting Hole Diameter | .28 in. | 7,1 mm |
| Mounting Hole Depth | Through | |
| Mounting Hole Quantity | 2 | |
| Includes integral cartridge(s) | Yes (see Included Components) | |



Notes

- Important: Carefully consider the maximum system pressure. The pressure rating of the manifold is dependent on the manifold material, with the port type/size a secondary consideration. Manifolds constructed of aluminum are not rated for pressures higher than 3000 psi (210 bar), regardless of the port type/size specified.
- This drawing is for reference only. It is generated by an automated process and does not fall under Sun's document control process.



| Port Headings | | |
|---------------|-------------|-----------|
| Product | Port | Size |
| J21 | Ports 1 & 2 | SAE 6 |
| J21 | Port 3 | SAE 4 |
| J21 | Gage Port | 1/4" NPTF |

| | | | | | | |
|---|-------------|---------|------------------|---|----------------------------|-------|
| 2 | CXAD-XCN | | CHECK VALVE | 1 | | |
| 1 | 158-481-004 | | 6061-T6 ALUMINUM | BODY | 1 | |
| ITEM | PART NO. | SETTING | MATERIAL | PART NAME | QTY | |
| | MODEL | | J21 | ALL DIMENSIONS IN INCH VIEWS ARE THIRD ANGLE | FIRST ANGLE THIRD ANGLE | |
| DESCRIPTION | | | DATE | SCALE | DWG SIZE | SHEET |
| T-163A Line mount (See Technical Data for Body Features) | | | Oct-10-24 | 1.545 | C | 1 |

