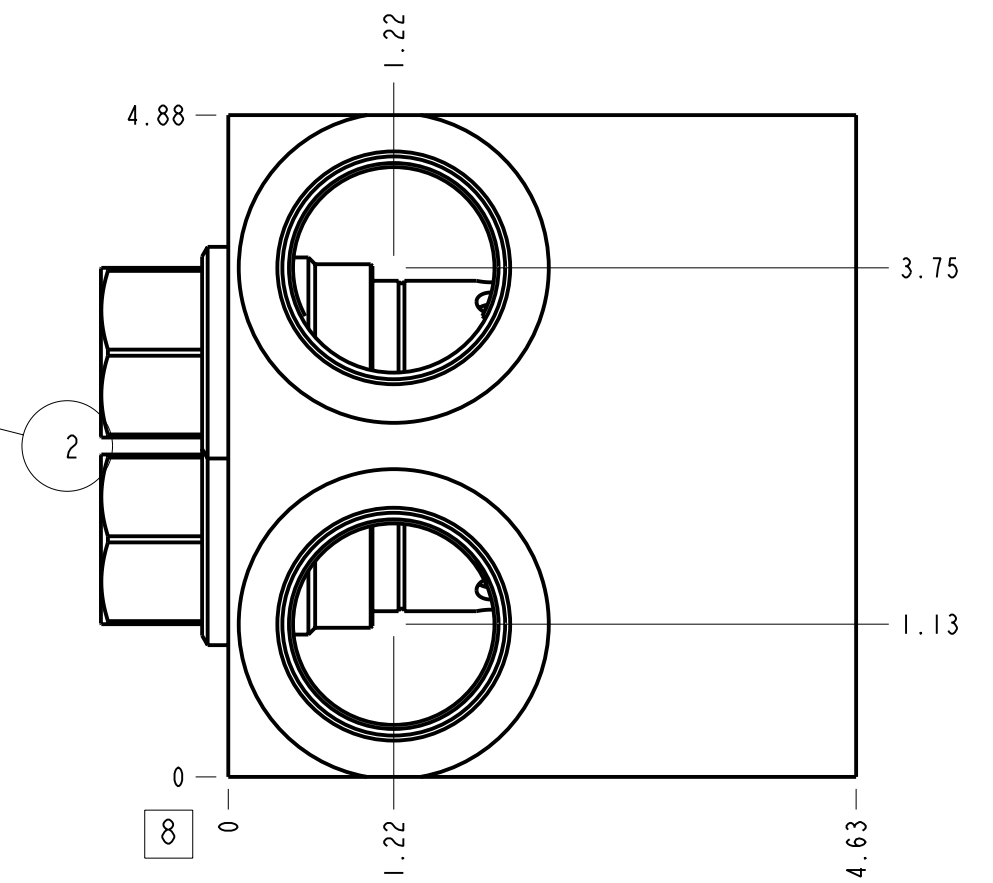
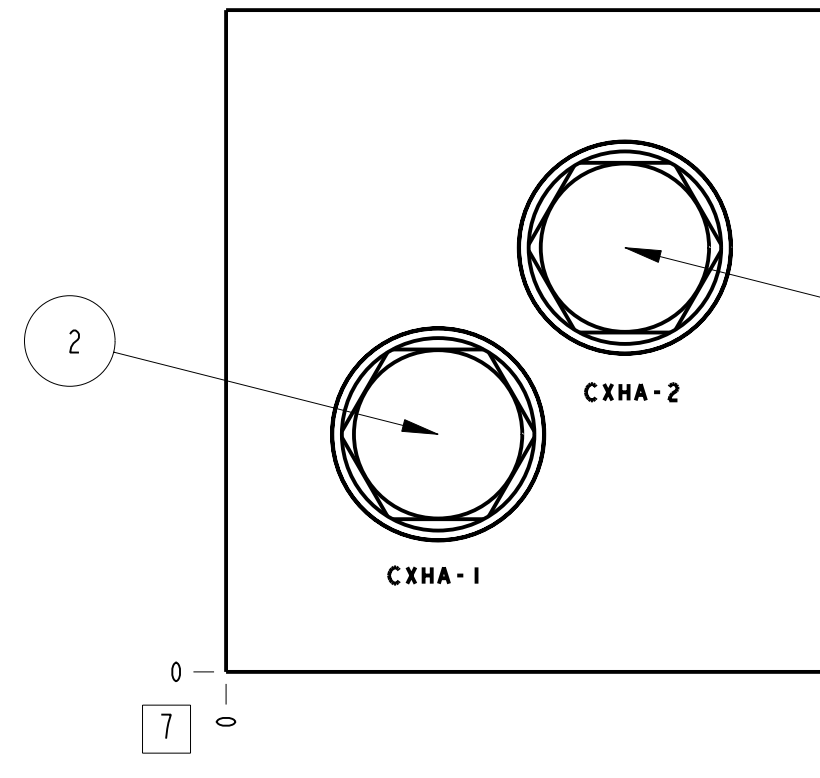
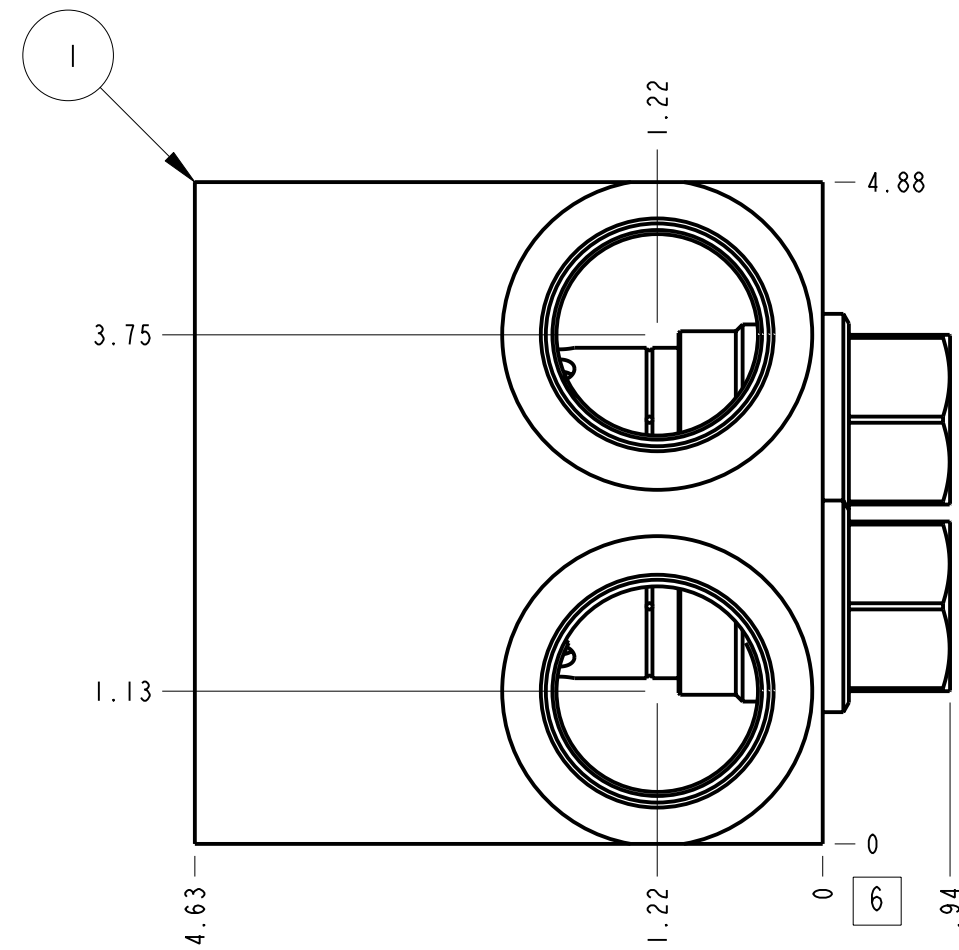
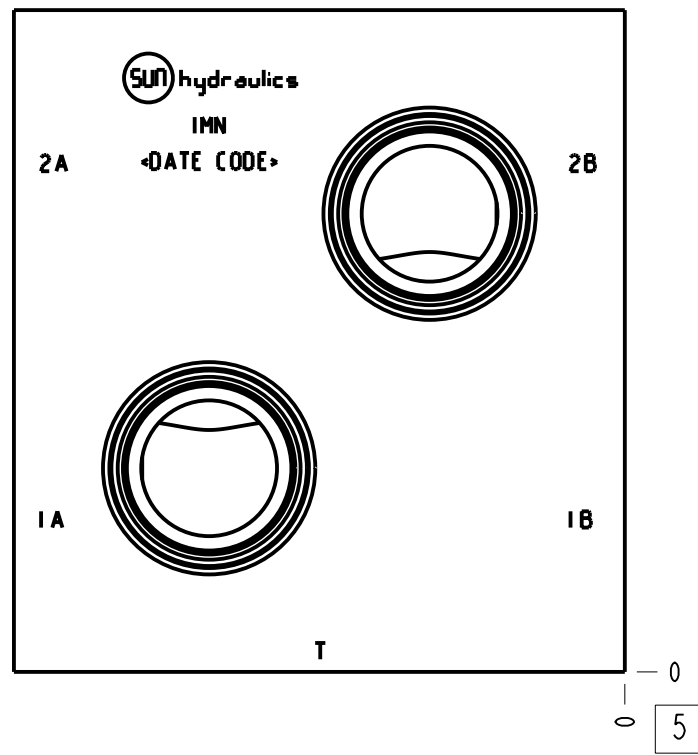
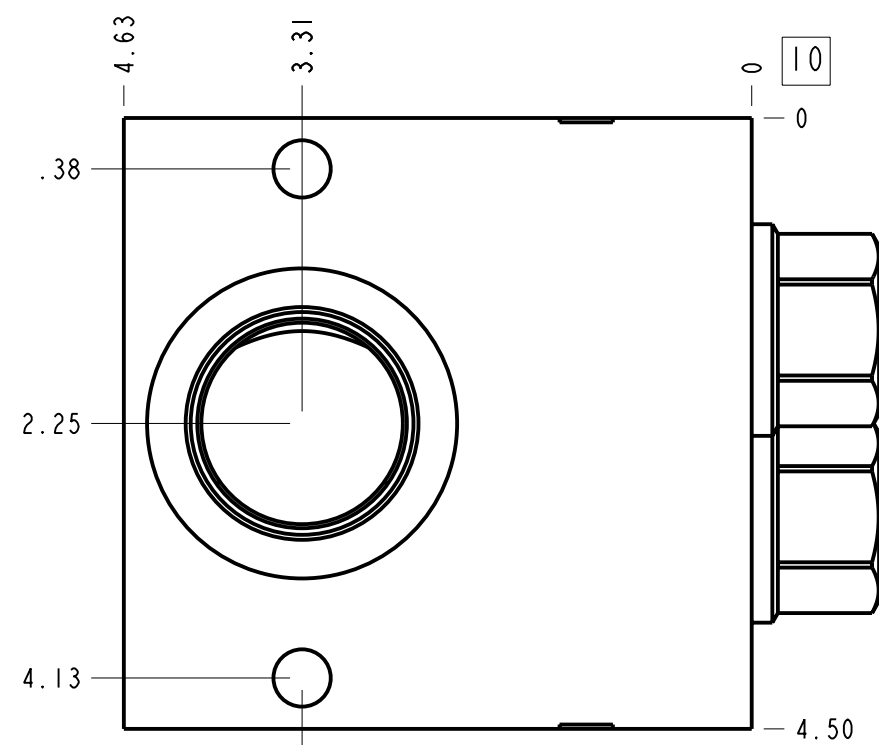


Technical Data	U.S. Units	Metric Units
Cavity	T-16A	
Body Features	Cross port with make up checks	
Body Type	Line mount	
Interface	None	
Open Cavity Quantity	2	
Weight	8.074 lb.	3,662 kg.
Mounting Hole Diameter	.42 in.	10,7 mm
Mounting Hole Depth	Through	
Mounting Hole Quantity	2	
Includes integral cartridge(s)	Yes (see Included Components)	



Notes

- Important: Carefully consider the maximum system pressure. The pressure rating of the manifold is dependent on the manifold material, with the port type/size a secondary consideration. Manifolds constructed of aluminum are not rated for pressures higher than 3000 psi (210 bar), regardless of the port type/size specified.
- This drawing is for reference only. It is generated by an automated process and does not fall under Sun's document control process.



Port Headings		
Product	Port	Size
IMN	All Ports	SAE 20

2	CXHA-XAN		CHECK VALVE	2	
1	151-172-006		6061-T6 ALUMINUM	BODY	1
ITEM	PART NO.	SETTING	MATERIAL	PART NAME	QTY

MODEL	IMN	ALL DIMENSIONS IN INCH VIEWS ARE THIRD ANGLE			FIRST ANGLE	THIRD ANGLE
DESCRIPTION	T-16A Line mount Cross port with make up checks		DATE	SCALE	DWG SIZE	SHEET
			Jan-30-24	0.707	C	1