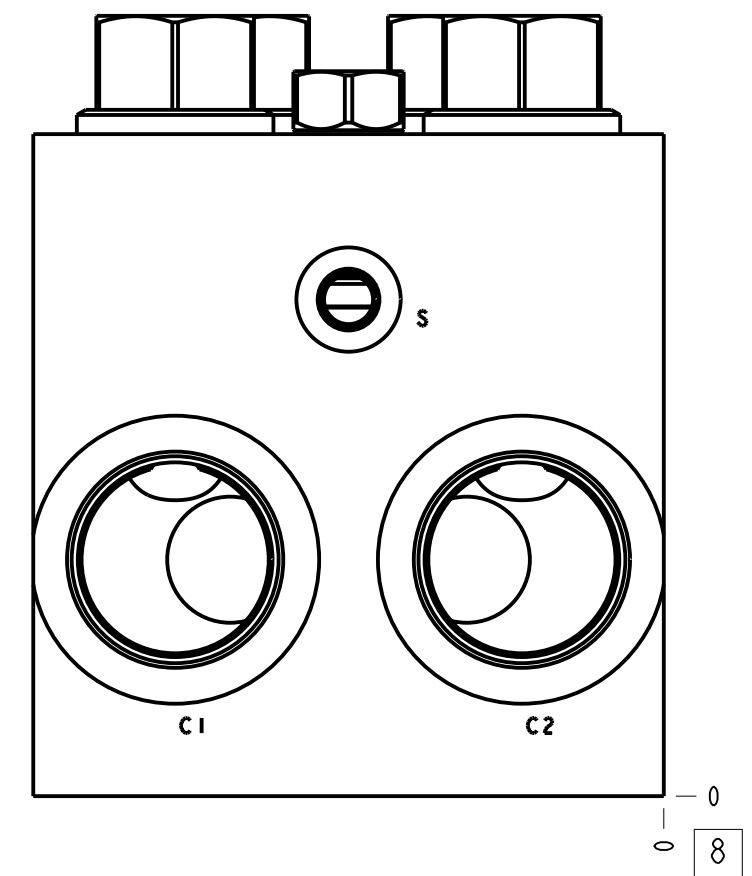
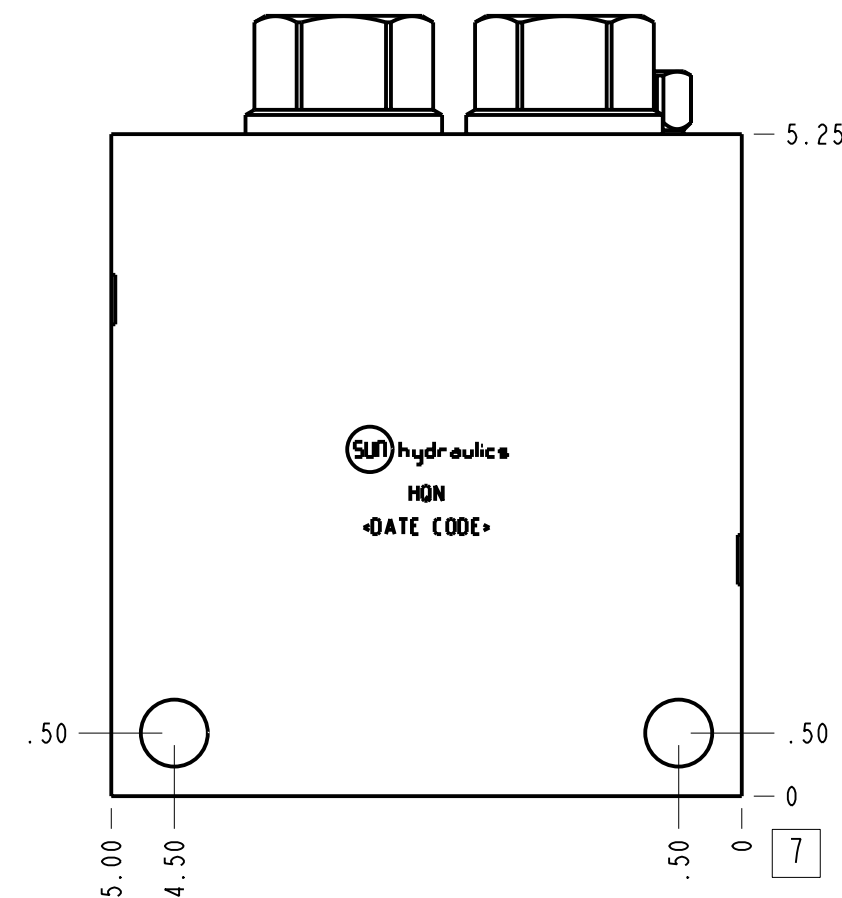
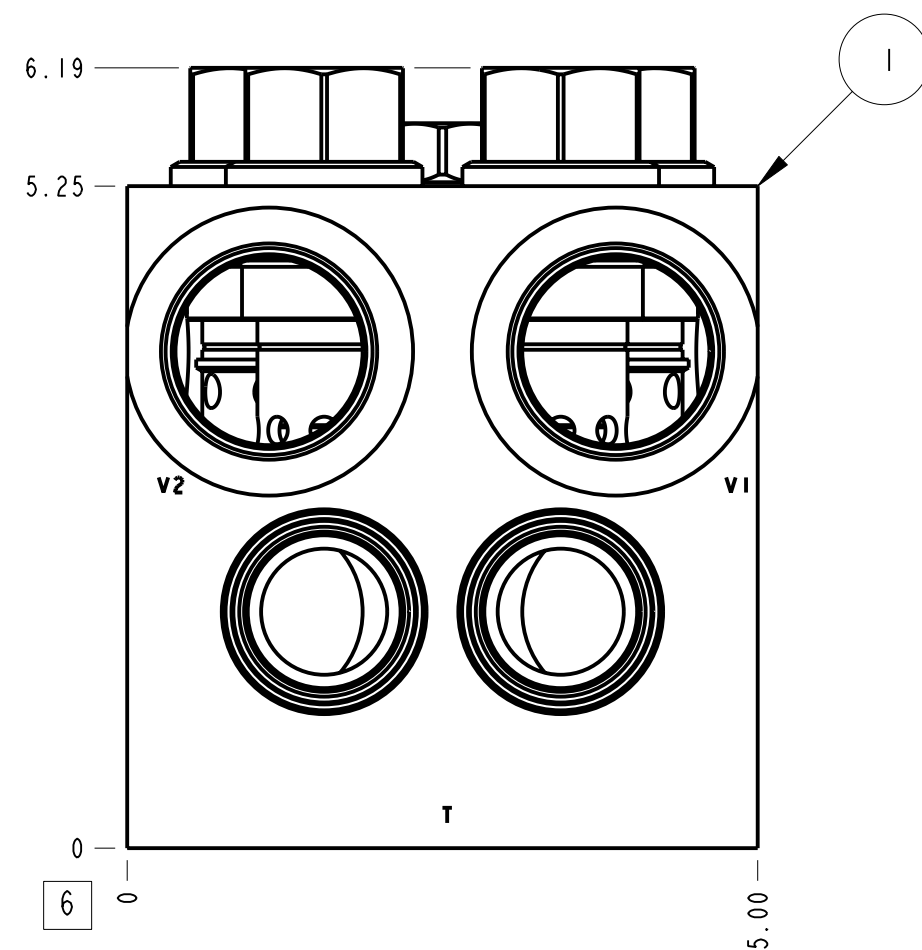
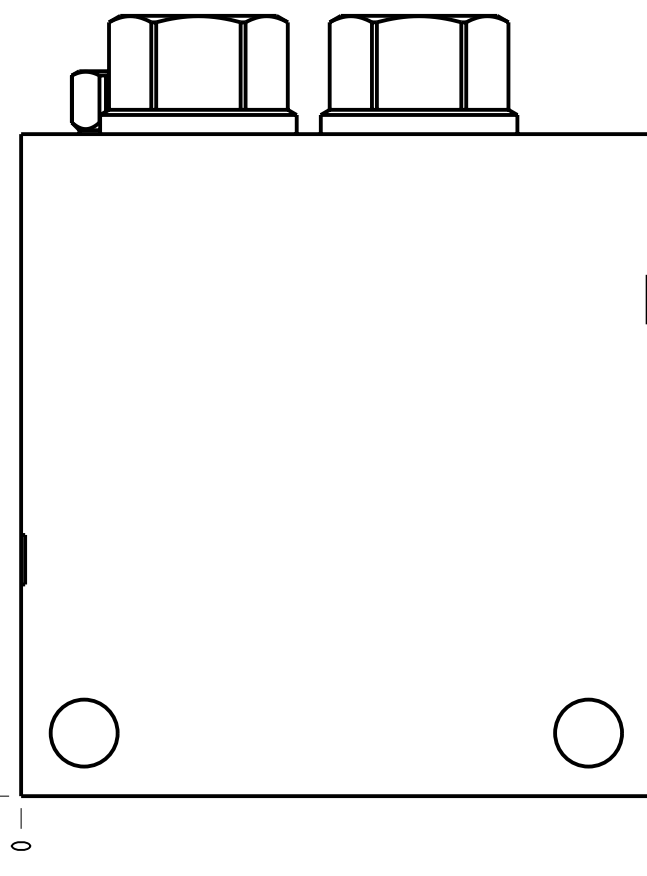
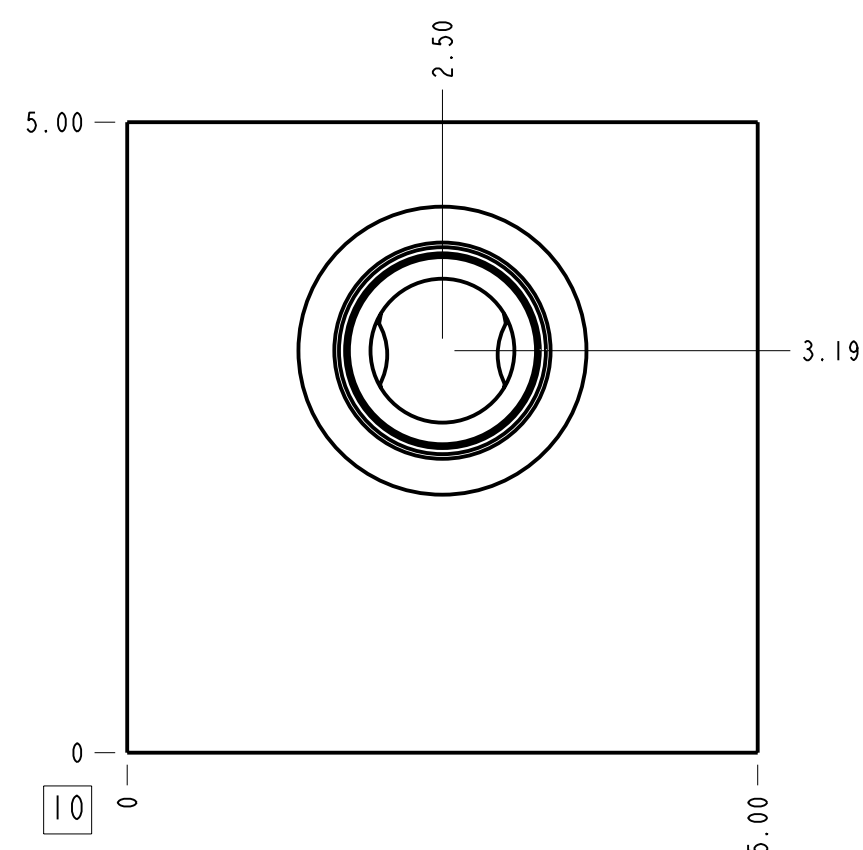


| Technical Data | U.S. Units | Metric Units |
|--------------------------------|--|--------------|
| Cavity | T-17A | |
| Body Features | Cushion lock with make up checks and shuttle | |
| Body Type | Line mount | |
| Interface | None | |
| Open Cavity Quantity | 2 | |
| Weight | 12.431 lb. | 5,638 kg. |
| Mounting Hole Diameter | .53 in. | 13,5 mm |
| Mounting Hole Depth | Through | |
| Mounting Hole Quantity | 2 | |
| Includes integral cartridge(s) | Yes (see Included Components) | |



Notes

- Important: Carefully consider the maximum system pressure. The pressure rating of the manifold is dependent on the manifold material, with the port type/size a secondary consideration. Manifolds constructed of aluminum are not rated for pressures higher than 3000 psi (210 bar), regardless of the port type/size specified.
- This drawing is for reference only. It is generated by an automated process and does not fall under Sun's document control process.



| Port Headings | | |
|---------------|-------------------|--------|
| Product | Port | Size |
| HQN | Ports C1,C2,V1,V2 | SAE 20 |
| HQN | Port T | SAE 20 |
| HQN | Port S | SAE 4 |

| | | | | | |
|------|-------------|---------|------------------|---------------|-----|
| 4 | CSAD-XXN | | | SHUTTLE VALVE | 1 |
| 3 | CXHA-XAN | | | CHECK VALVE | 2 |
| 2 | CXGD-XAN | | | CHECK VALVE | 2 |
| 1 | 151-182-004 | | 6061-T6 ALUMINUM | BODY | 1 |
| ITEM | PART NO. | SETTING | MATERIAL | PART NAME | QTY |

| | | | | | |
|-------------|--|---|-------------|-------------|-------|
| MODEL | HQN | ALL DIMENSIONS IN INCH VIEWS ARE THIRD ANGLE | FIRST ANGLE | THIRD ANGLE | |
| DESCRIPTION | T-17A Line mount (See Technical Data for Body Features) | DATE | SCALE | DWG SIZE | SHEET |
| | | May-31-24 | 0.657 | C | 1 |