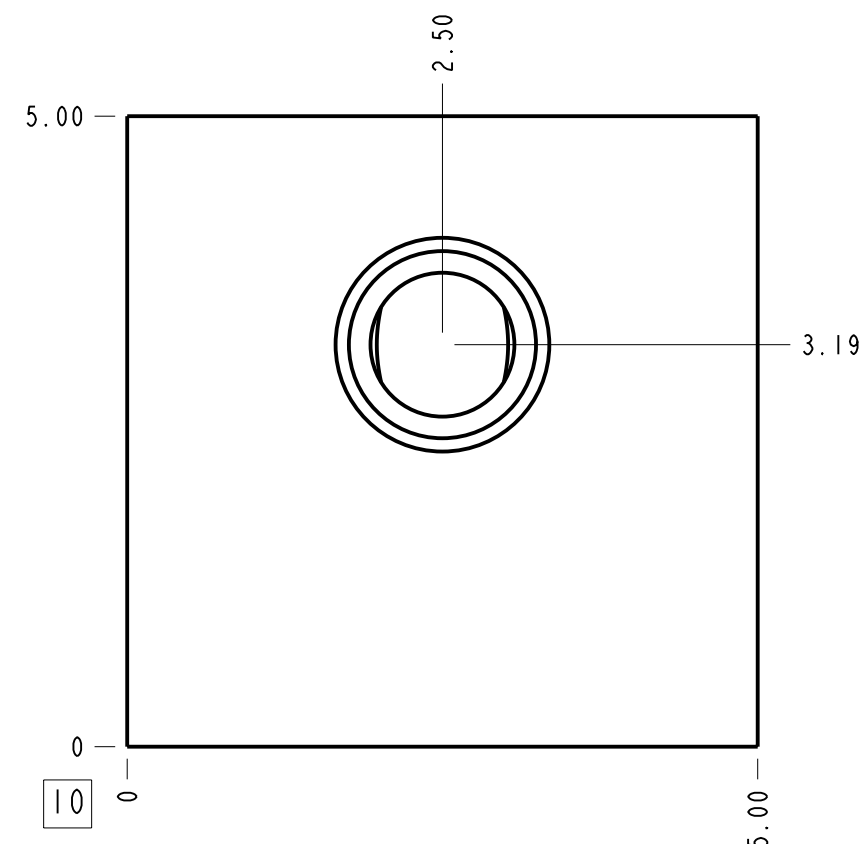
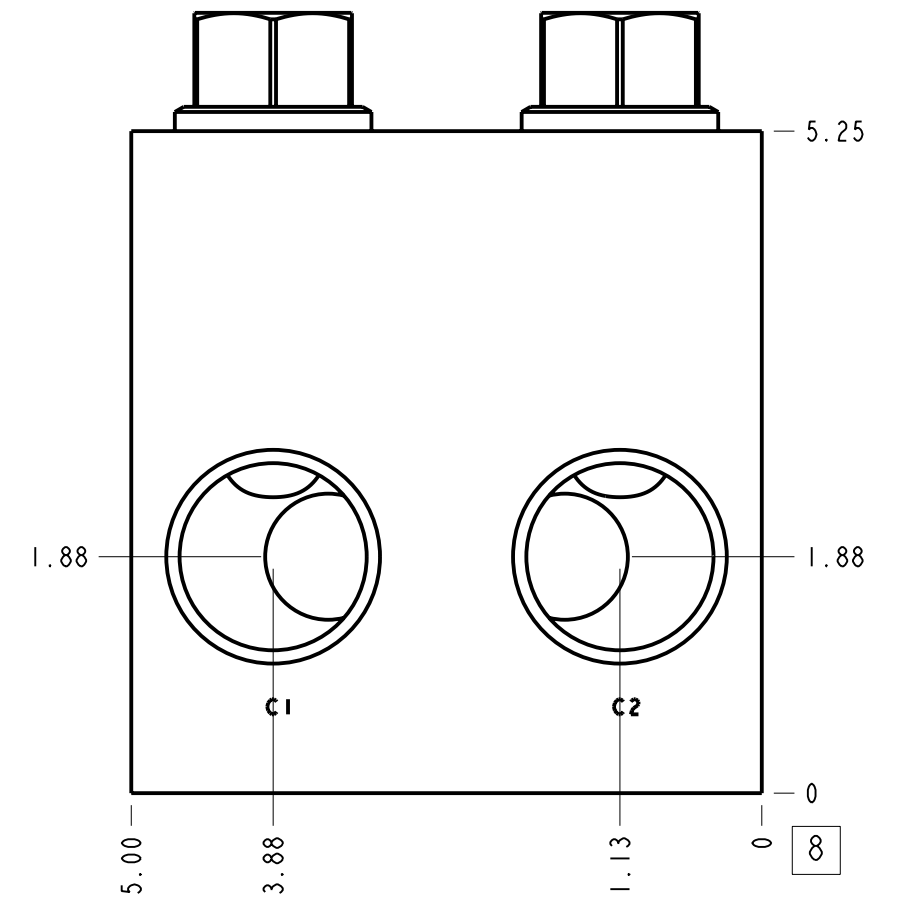
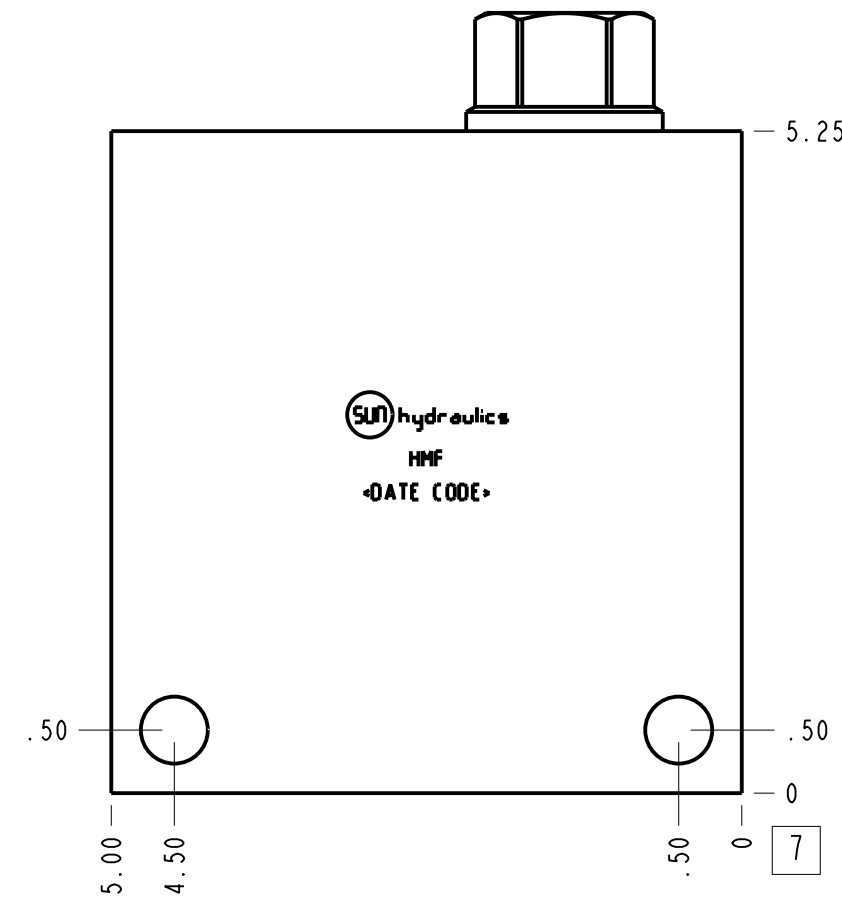
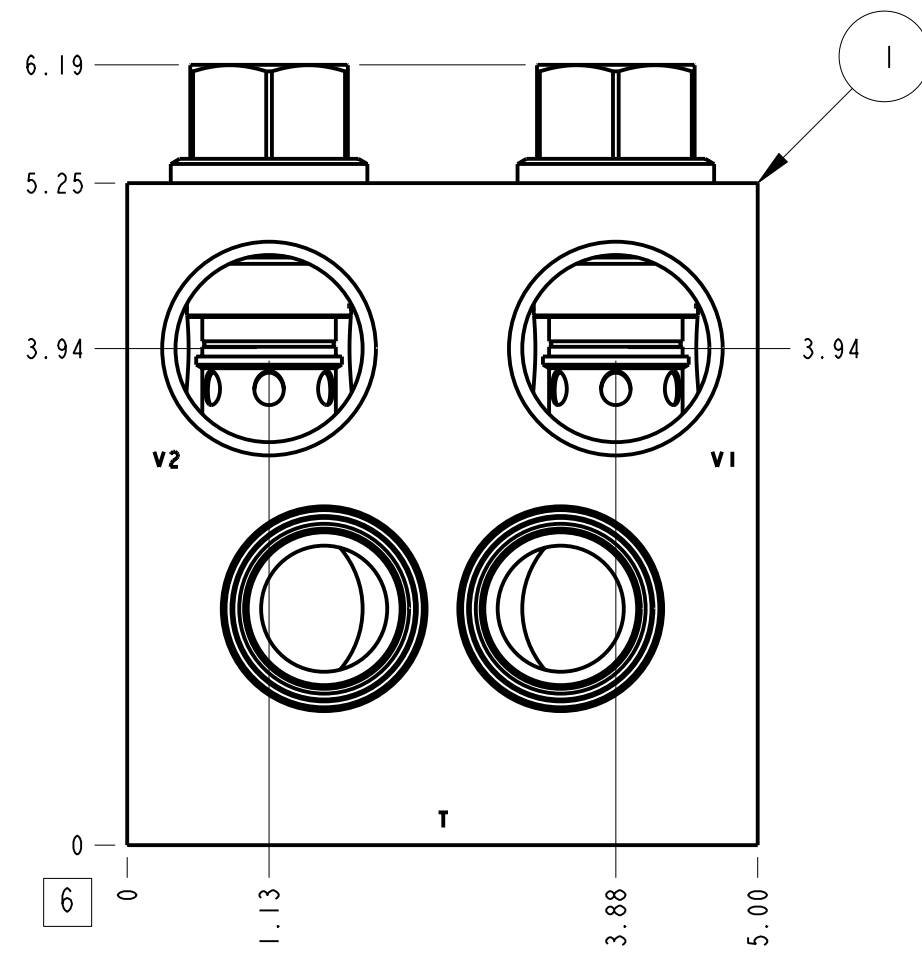
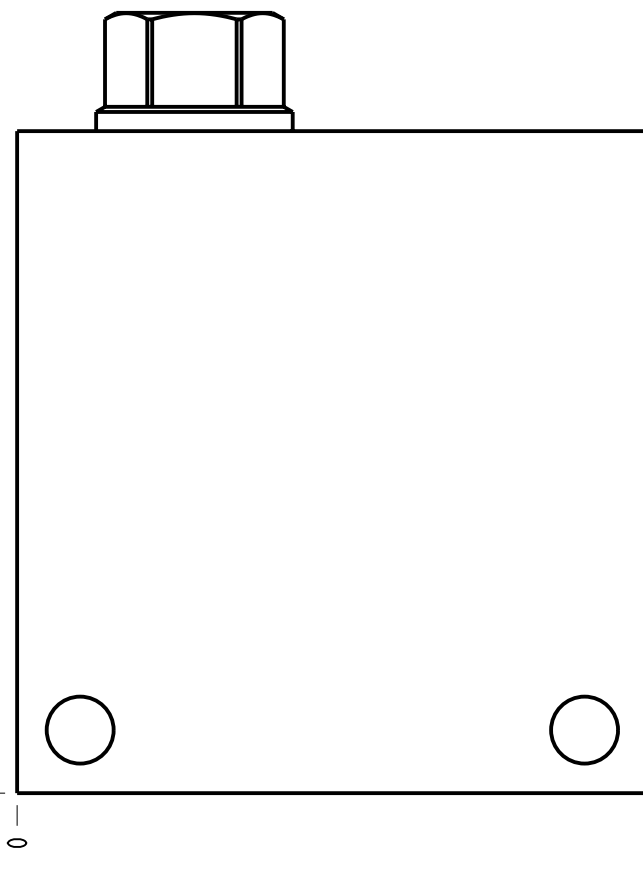


Technical Data	U.S. Units	Metric Units
Cavity	T-17A	
Body Features	Cushion lock	
Body Type	Line mount	
Interface	None	
Open Cavity Quantity	2	
Weight	10.996 lb.	4,988 kg.
Maximum Operating Pressure - 6061-T651 Aluminum	3000 psi	210 bar
Maximum Operating Pressure - 65-45-12 Ductile Iron	5000 psi	350 bar
Mounting Hole Diameter	.53 in.	13,5 mm
Mounting Hole Depth	Through	
Mounting Hole Quantity	2	
Includes integral cartridge(s)	Yes (see Included Components)	



**Notes**

1. Important: Carefully consider the maximum system pressure. The pressure rating of the manifold is dependent on the manifold material, with the port type/size a secondary consideration. Manifolds constructed of aluminum are not rated for pressures higher than 3000 psi (210 bar), regardless of the port type/size specified.
2. This drawing is for reference only. It is generated by an automated process and does not fall under Sun's document control process.

Port Headings		
Product	Port	Size
HMF	All Ports	1 1/4" NPTF

2	CXGDXCN		CHECK VALVE	2		
1	151-179-002	6061-T6 ALUMINUM	BODY	1		
ITEM	PART NO.	SETTING	MATERIAL	PART NAME	QTY	
	MODEL		HMF	ALL DIMENSIONS IN INCH VIEWS ARE THIRD ANGLE		
DESCRIPTION		T-17A Line mount Cushion lock	DATE	SCALE	DWG SIZE	SHEET
		Jul-16-24	0.657	C	1	

