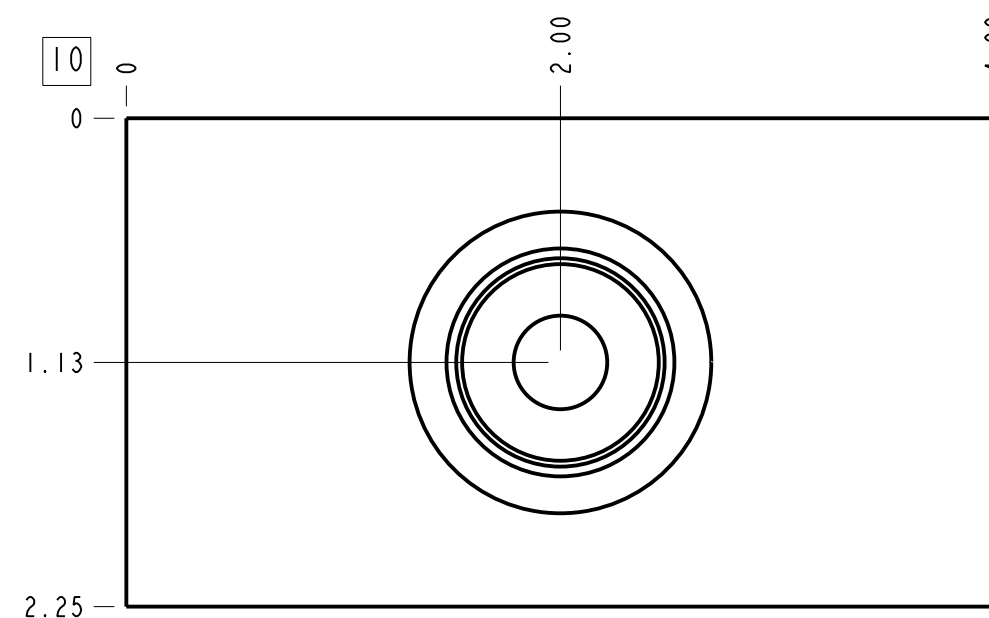
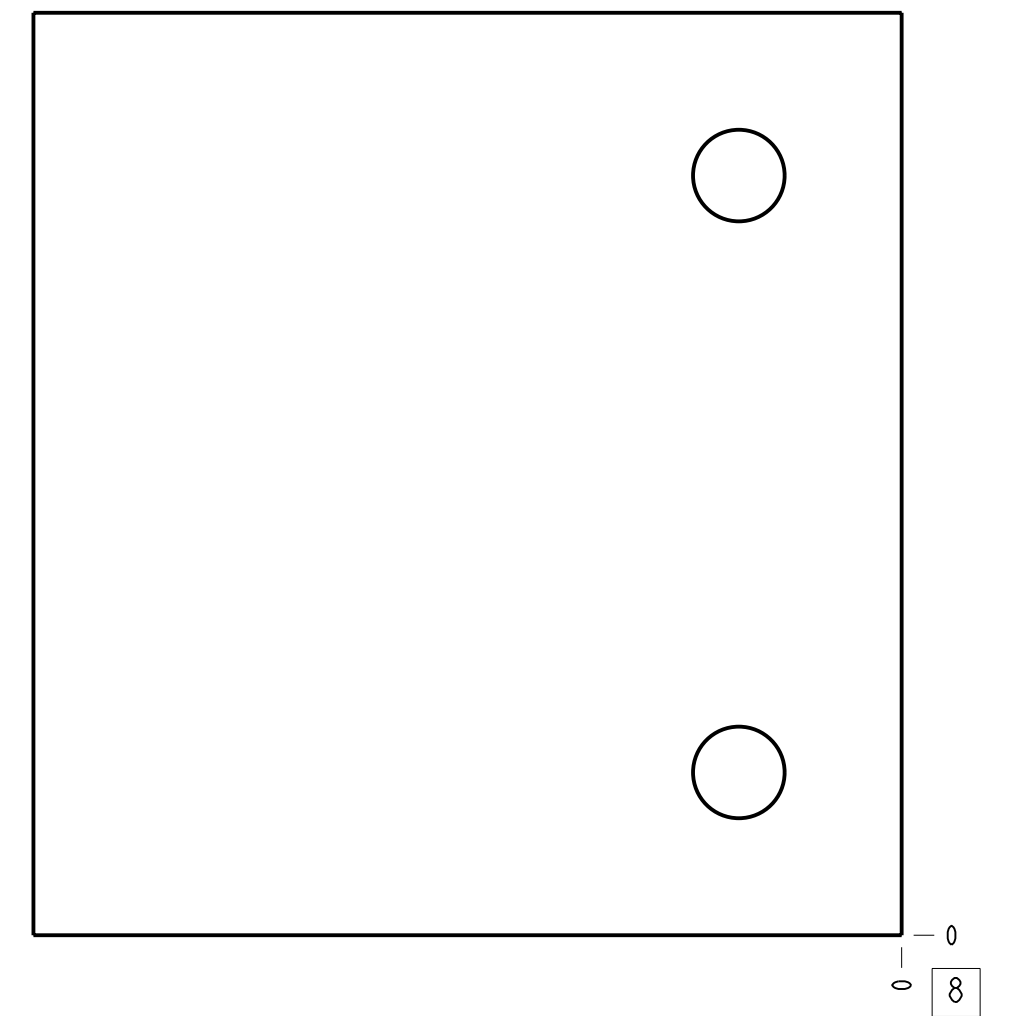
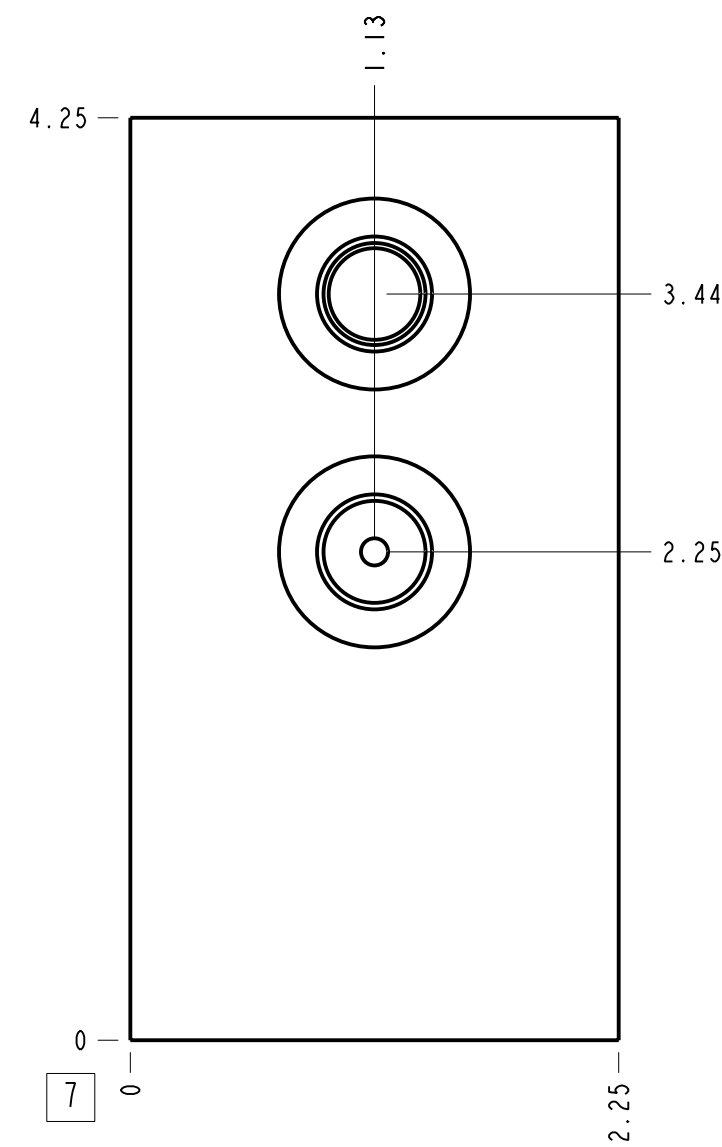
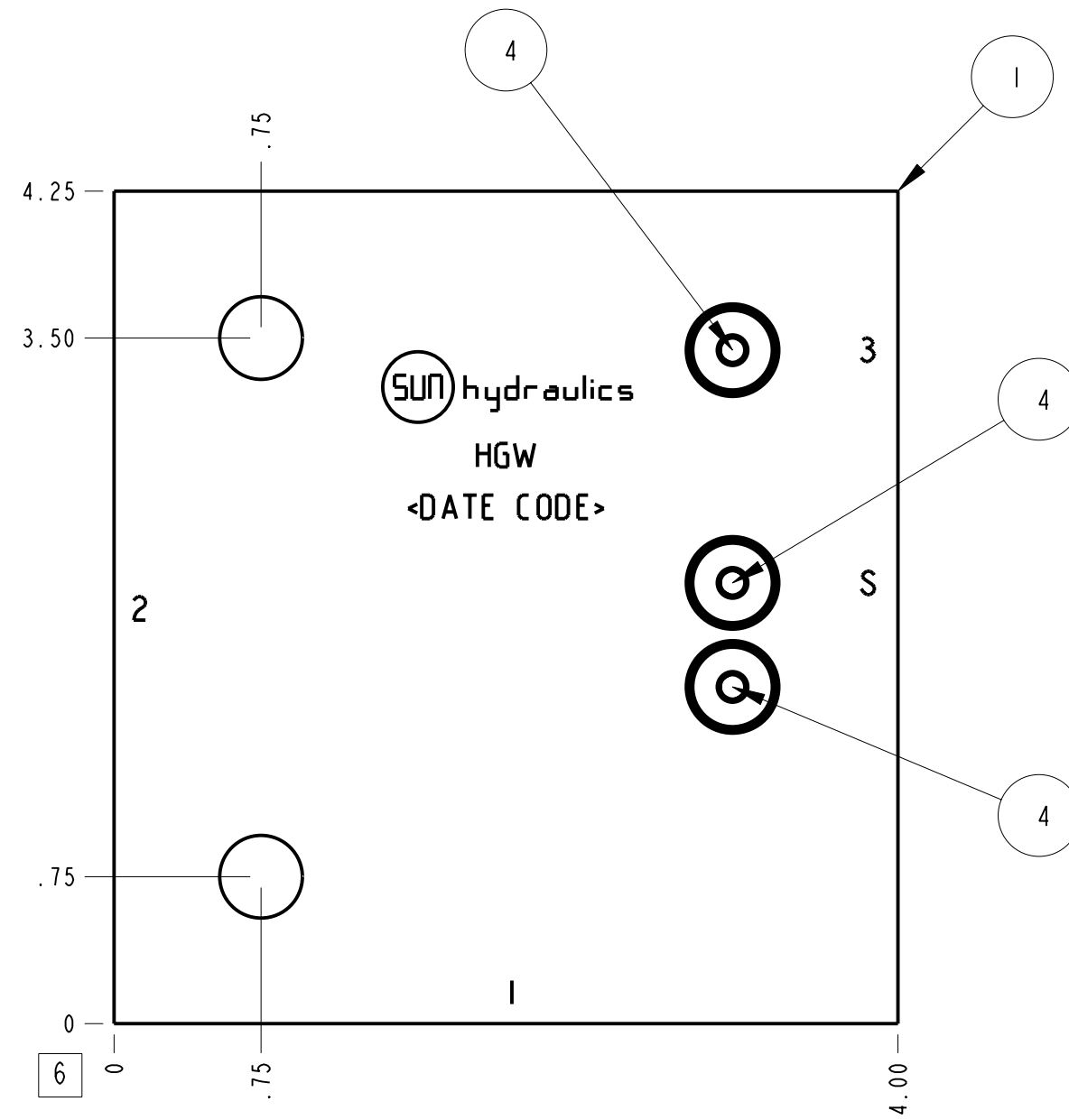
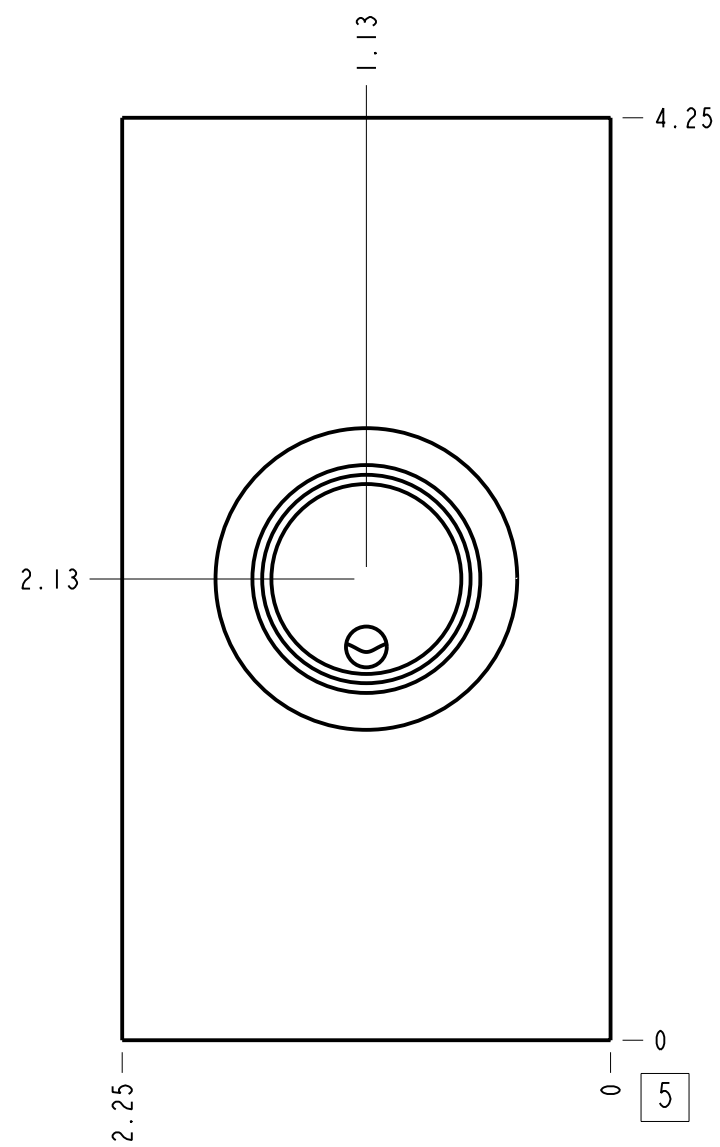


Technical Data	U.S. Units	Metric Units
Cavity	T-17A	
Body Features	Ninety degree with shuttle	
Body Type	Line mount	
Interface	None	
Open Cavity Quantity	1	
Weight	3.028 lb.	1,374 kg.
Mounting Hole Diameter	.42 in.	10,7 mm
Mounting Hole Depth	Through	
Mounting Hole Quantity	2	
Includes integral cartridge(s)	Yes (see Included Components)	



**Notes**

- Important: Carefully consider the maximum system pressure. The pressure rating of the manifold is dependent on the manifold material, with the port type/size a secondary consideration. Manifolds constructed of aluminum are not rated for pressures higher than 3000 psi (210 bar), regardless of the port type/size specified.
- This drawing is for reference only. It is generated by an automated process and does not fall under Sun's document control process.

Port Headings		
Product	Port	Size
HGW	Ports 1 & 2	3/4" BSPP
HGW	Ports 3 & S	1/4" BSPP

4	A330-006-002			SAE-2 PLUG	3
3	CSZNXXN			SHUTTLE VALVE	1
2	A330-006-004			SAE-4 PLUG	1
1	150-693-007		6061-T6 ALUMINUM	BODY	1
ITEM	PART NO.	SETTING	MATERIAL	PART NAME	QTY

MODEL		HGW		ALL DIMENSIONS IN INCH VIEWS ARE THIRD ANGLE		FIRST ANGLE		THIRD ANGLE	
DESCRIPTION		DATE	SCALE	DWG SIZE	SHEET				
T-17A Line mount Ninety degree with shuttle		May-19-23	1.130	C	1				