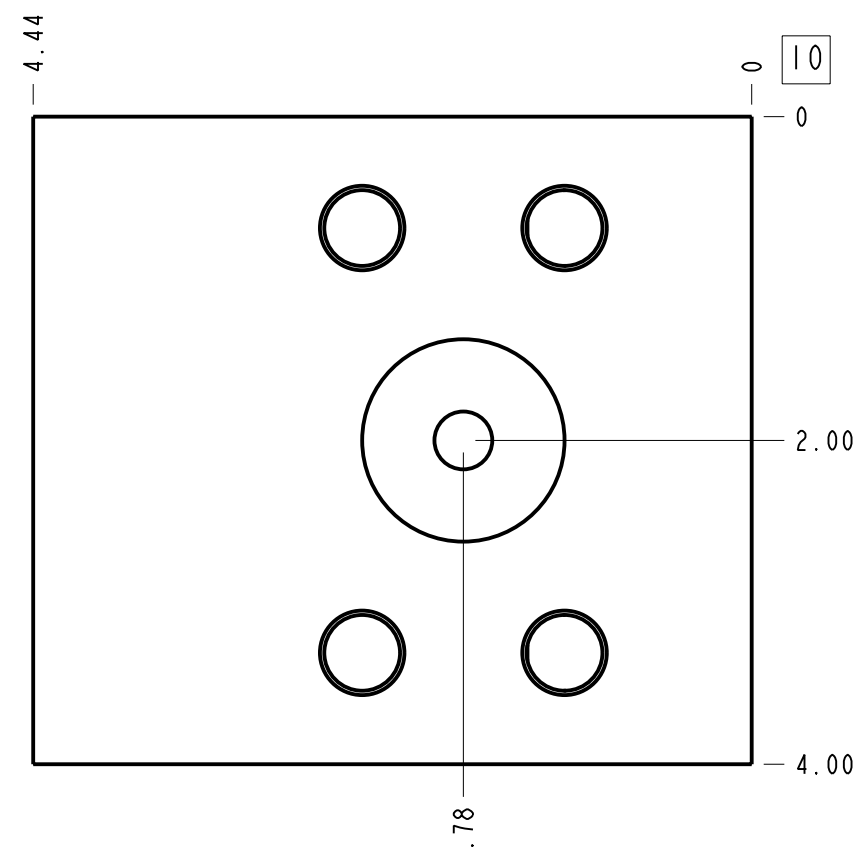
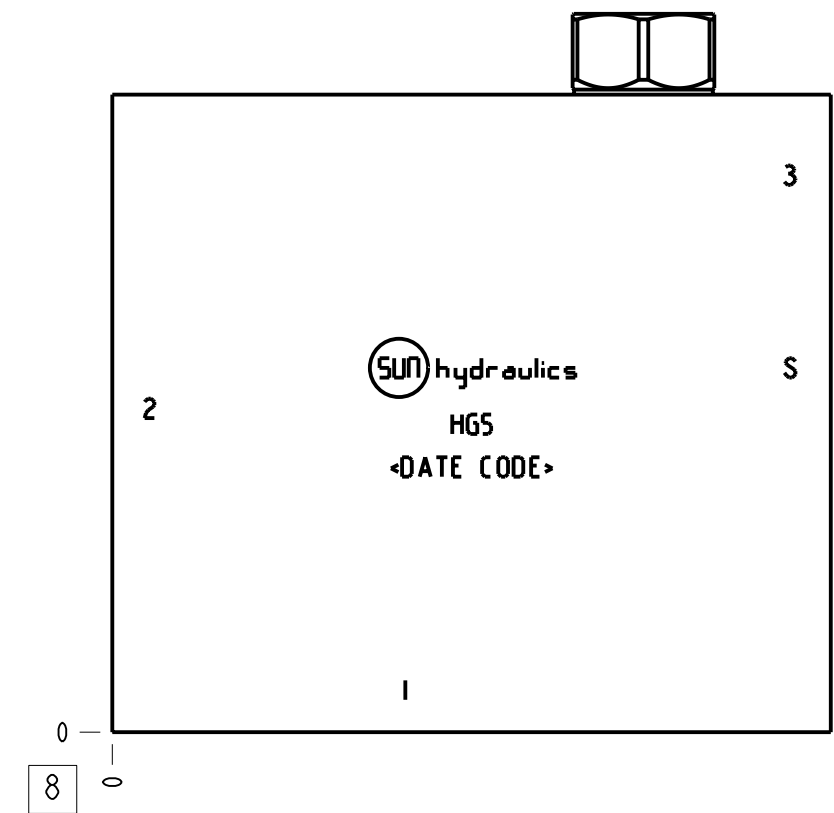
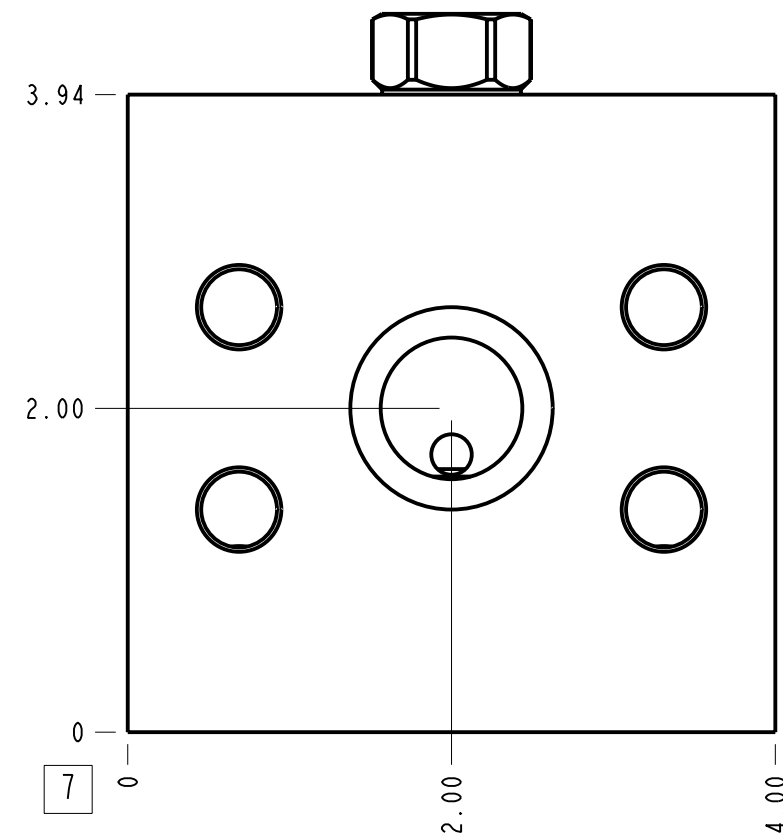
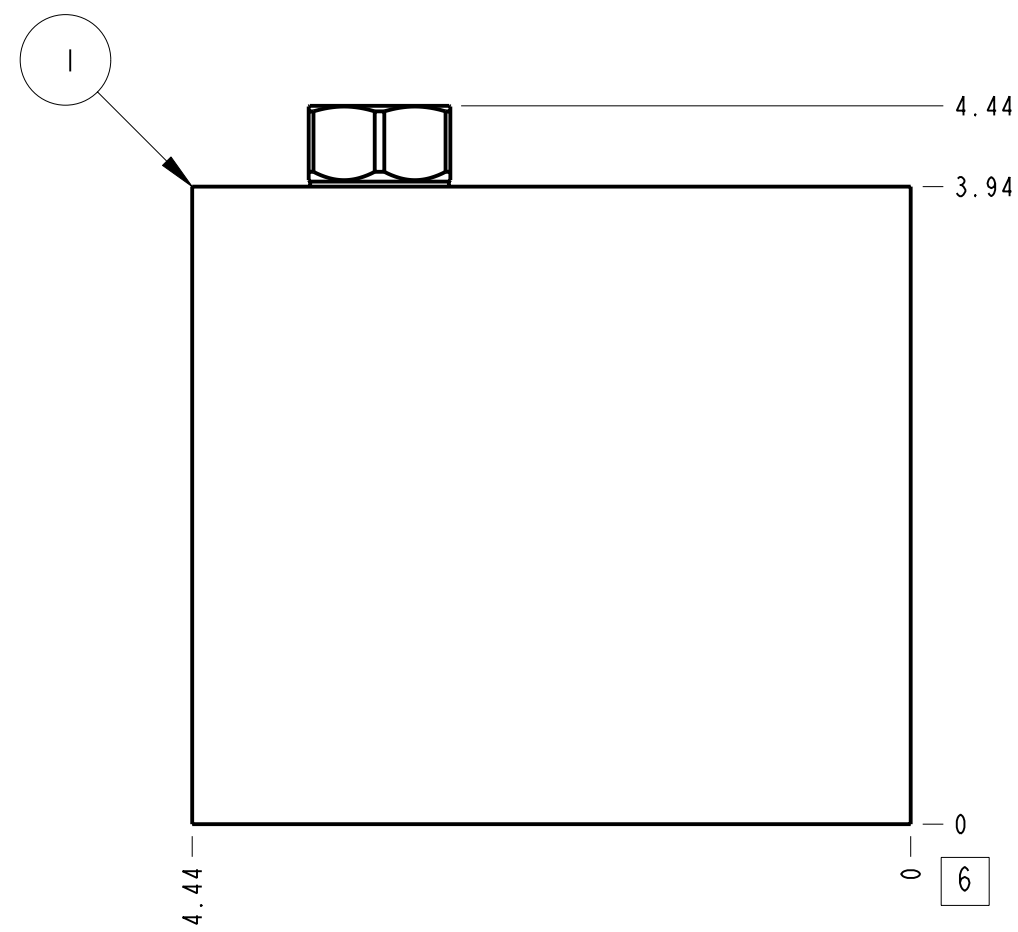
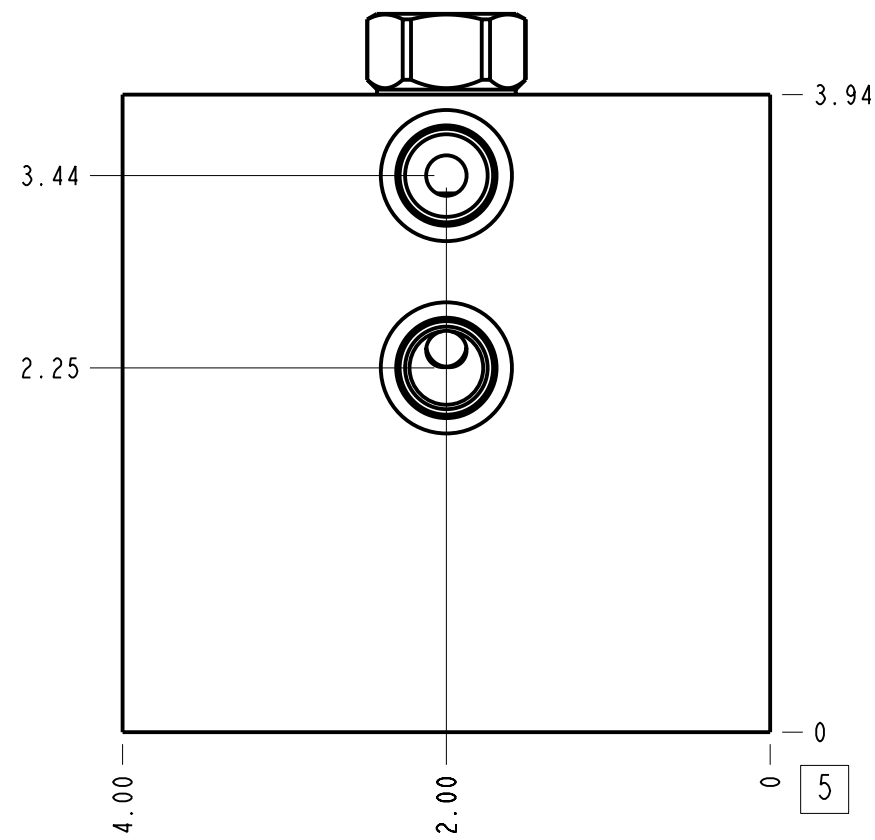
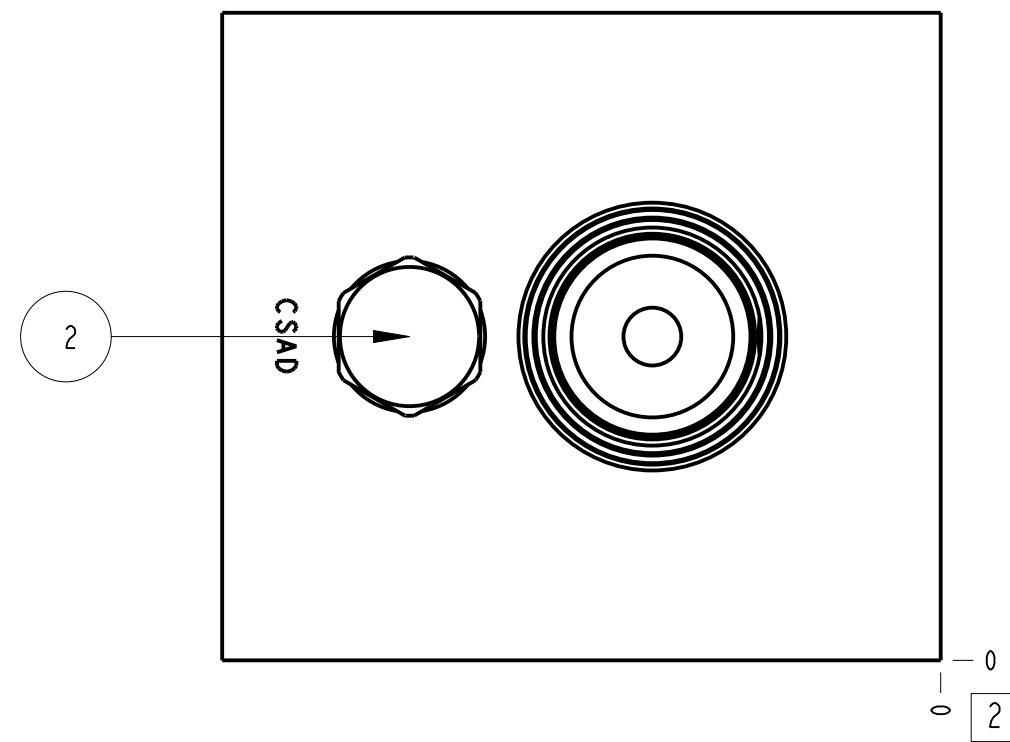


Technical Data	U.S. Units	Metric Units
Cavity	T-17A	
Body Features	Ninety degree with shuttle	
Body Type	Line mount	
Interface	None	
Open Cavity Quantity	1	
Weight	6.097 lb.	2,766 kg.
Includes integral cartridge(s)	Yes (see Included Components)	



Notes

- Important: Carefully consider the maximum system pressure. The pressure rating of the manifold is dependent on the manifold material, with the port type/size a secondary consideration. Manifolds constructed of aluminum are not rated for pressures higher than 3000 psi (210 bar), regardless of the port type/size specified.
- 1.25" SAE Flange mounting hole data: Inch: 1/2-13UNC x 1.00 (25.4 mm) DP, Metric: M14 x 2.0-6H x 1.00 (25.4 mm) DP
- This drawing is for reference only. It is generated by an automated process and does not fall under Sun's document control process.

Port Headings		
Product	Port	Size
HG5	Ports 1 & 2	1-1/4" C62
HG5	Ports 3 & S	SAE 6

2	CSAD-XXN			SHUTTLE VALVE	1
1	152-455-001		6061-T6 ALUMINUM	BODY	1
ITEM	PART NO.	SETTING	MATERIAL	PART NAME	QTY
	MODEL				
DESCRIPTION			ALL DIMENSIONS IN INCH VIEWS ARE THIRD ANGLE		
T-17A Line mount Ninety degree with shuttle			DATE	SCALE	DWG SIZE SHEET
			Sep-20-24	0.843	C 1