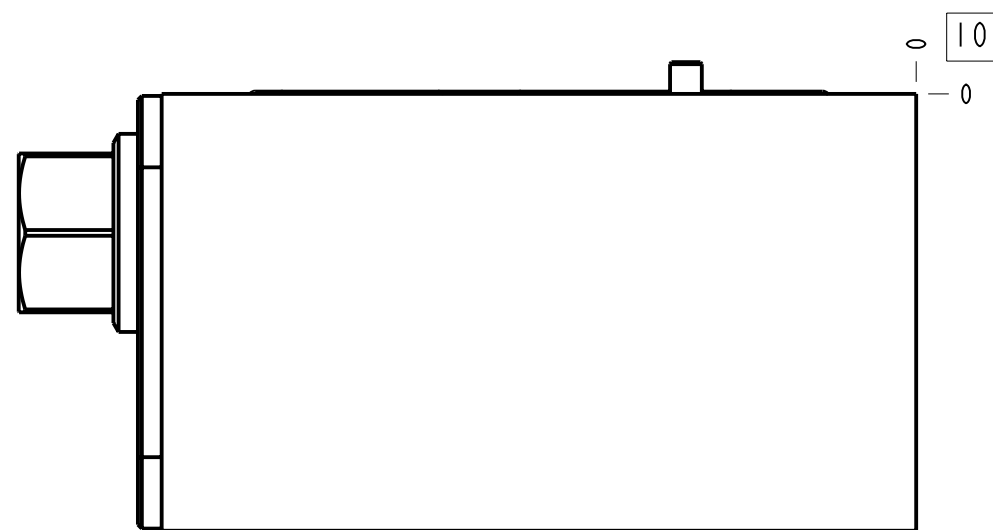
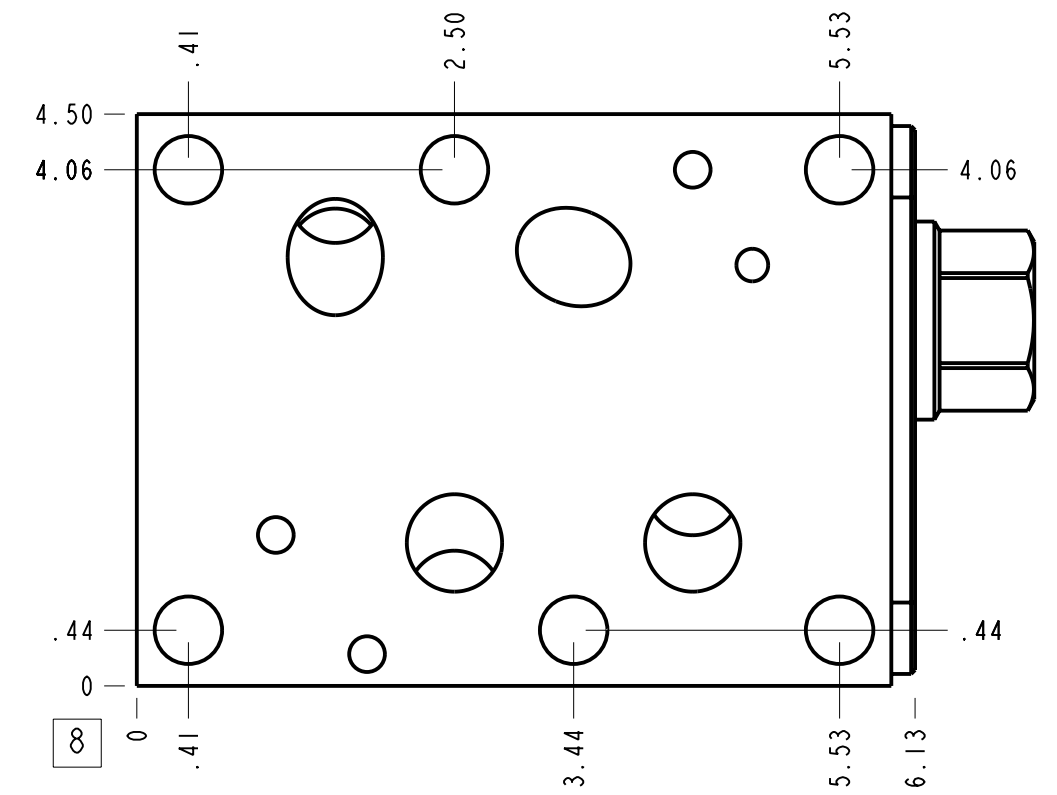
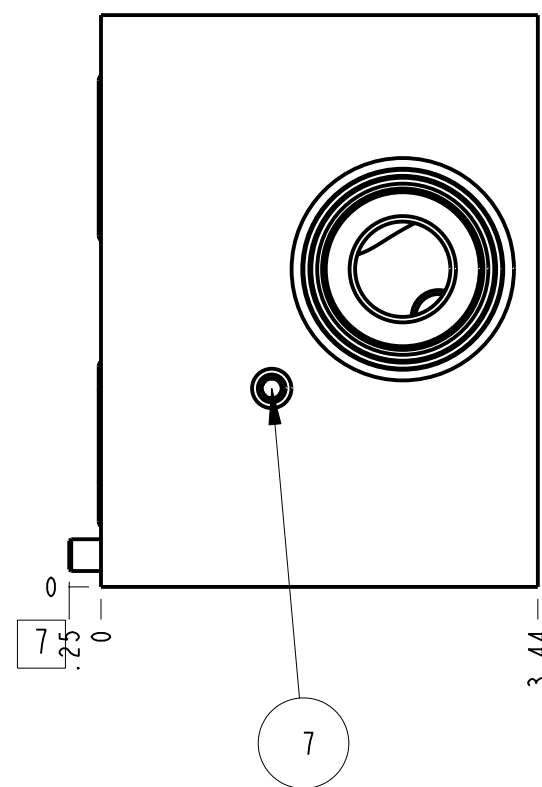
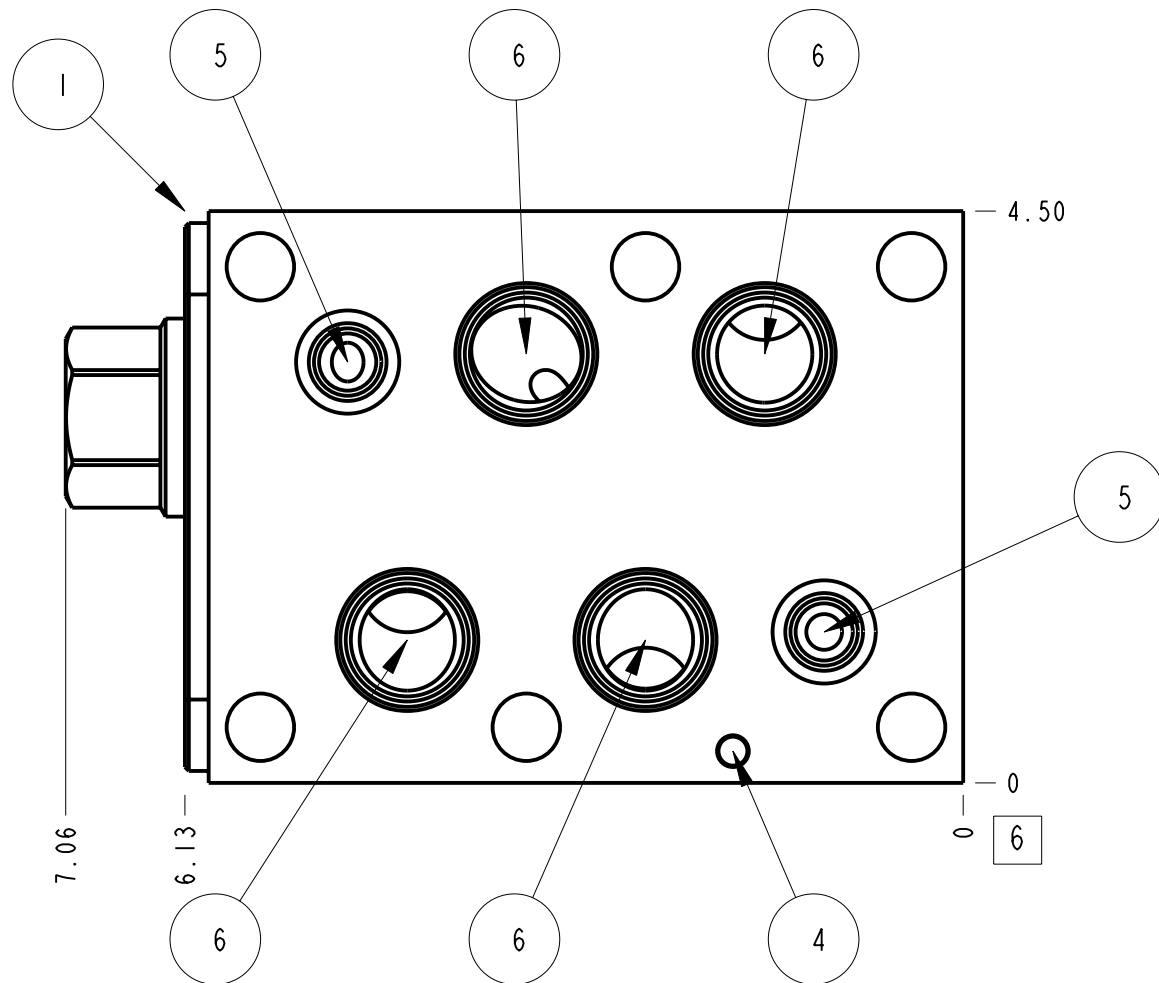
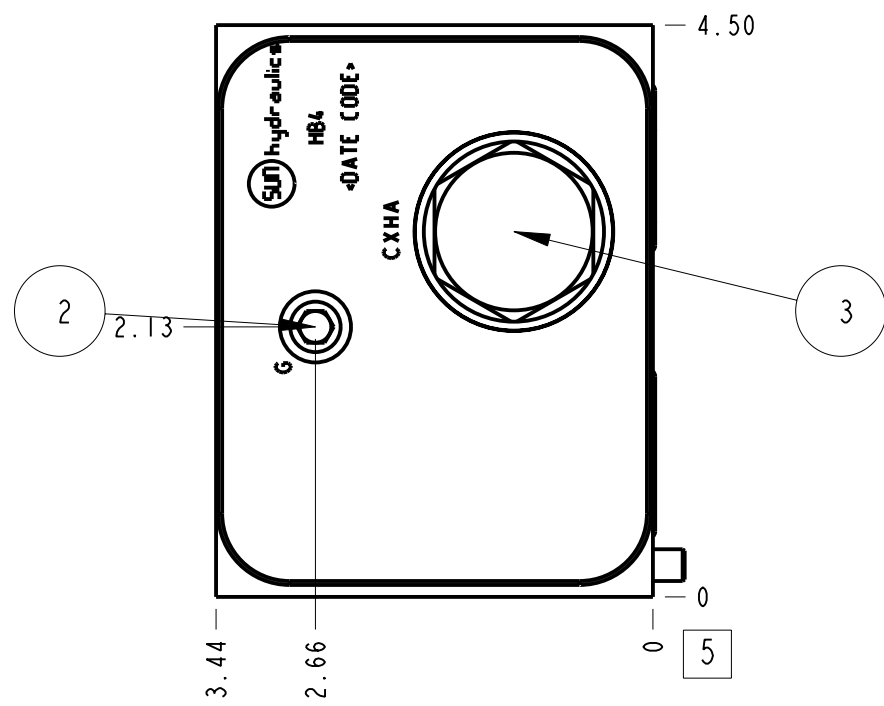


| Technical Data                 | U.S. Units                              | Metric Units |
|--------------------------------|---|--------------|
| Cavity                         | T-17A                                   |              |
| Body Features                  | Sequence into A with reverse flow check |              |
| Body Type                      | Sandwich                                |              |
| Interface                      | ISO 08                                  |              |
| Open Cavity Quantity           | 1                                       |              |
| Weight                         | 8.001 lb.                               | 3,629 kg.    |
| Includes integral cartridge(s) | Yes (see Included Components)           |              |



**Notes**

1. Important: Carefully consider the maximum system pressure. The pressure rating of the manifold is dependent on the manifold material, with the port type/size a secondary consideration. Manifolds constructed of aluminum are not rated for pressures higher than 3000 psi (210 bar), regardless of the port type/size specified.
2. This drawing is for reference only. It is generated by an automated process and does not fall under Sun's document control process.

| Port Headings |                     |           |
|---------------|---------------------|-----------|
| Product       | Port                | Size      |
| HB4           | Gage Port (Plugged) | 1/4" NPTF |

| 7    | 340-001     |         |                  | PLUG-.062-27 NPTF | 1   |
|------|-------------|---------|------------------|-------------------|-----|
| 6    | 500-001-121 |         | N-0674-70        | O-RING            | 4   |
| 5    | 500-001-114 |         | N-0674-70        | O-RING            | 2   |
| 4    | 811-001-002 |         | LOW CARBON STEEL | MACHINED PART     | 1   |
| 3    | CXHAXCN     |         |                  | CHECK VALVE       | 1   |
| 2    | 340-003     |         |                  | PLUG-.250-18 NPTF | 1   |
| 1    | 150-833-001 |         | 6061-T6 ALUMINUM | BODY              | 1   |
| ITEM | PART NO.    | SETTING | MATERIAL         | PART NAME         | QTY |

|  |  |           |       |   |       |             |  |             |  |
|--|--|-----------|-------|---|-------|-------------|--|-------------|--|
| MODEL  |  | HB4       |       | ALL DIMENSIONS IN INCH<br>VIEWS ARE THIRD ANGLE |       | FIRST ANGLE |  | THIRD ANGLE |  |
| DESCRIPTION  |  | DATE      | SCALE | DWG SIZE  | SHEET |             |  |             |  |
| T-17A Sandwich ISO 08<br>Sequence into A with reverse flow check |  | Nov-30-23 | 0.662 | C   | 1     |             |  |             |  |